



Sheep Way, Redhouse Park, Milton Keynes, MK14 5FP

welcome to

Sheep Way, Redhouse Park, Milton Keynes

Located in the popular Redhouse Park development in Newport Pagnell, this well-presented, one-bedroom flat is situated on Sheep Way and offers modern, low-maintenance living in a quiet residential setting.

Entrance Hall

Double-glazed door to the rear, 2 storage cupboards and a radiator.

Lounge / Kitchen / Diner

Lounge area: 2 radiators and double-glazed window to the front.

Kitchen area: Fitted with a mix of wall and base units with work surface over, 1.5 bowl stainless steel sink with mixer tap and drainer, electric oven and gas hob with a chimney style extractor fan over. Integrated washing machine and fridge/freezer. Lino flooring and double-glazed window to the rear.

Bedroom

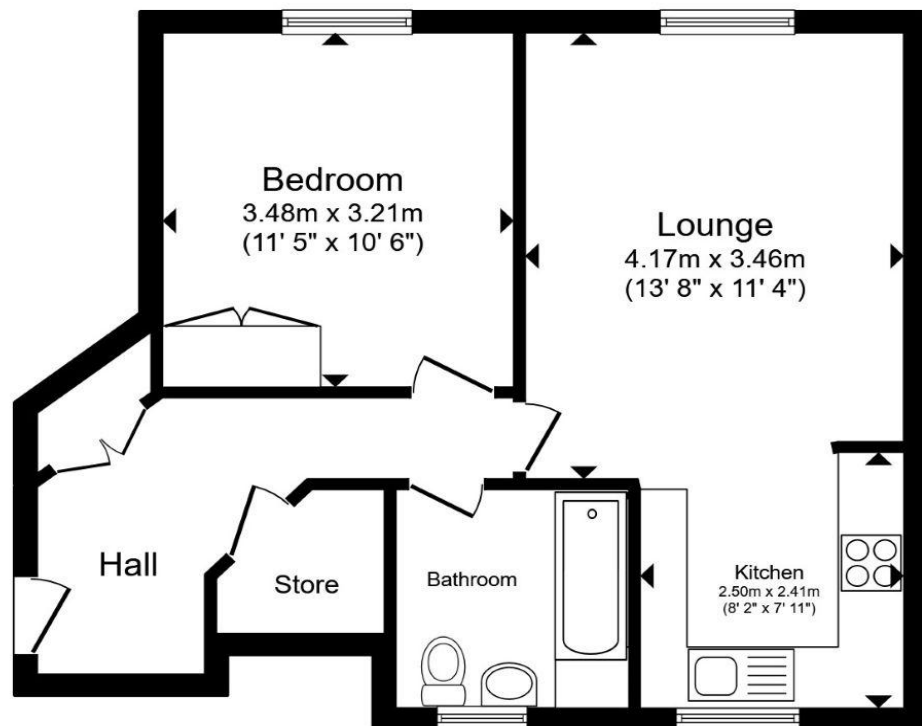
Built-in wardrobes with hanging rail and storage, radiator and double-glazed window to the front.

Bathroom

Partially tiled with a pedestal wash hand basin with mixer tap, low-level WC and a bath with shower over. Extractor fan, radiator and double-glazed obscured window to the rear.

Outside Parking

Allocated parking.



Total floor area 46.9 m² (505 sq.ft.) approx

This floor plan is for illustrative purposes only. It is not drawn to scale. Any measurements, floor areas (including any total floor area), openings and orientation are approximate. No details are guaranteed, they cannot be relied upon for any purpose and they do not form part of any agreement. No liability is taken for any error, omission or misstatement. A party must rely upon its own inspection(s). Powered by www.propertybox.io


brown
& merry



welcome to
Sheep Way,
Redhouse Park, Milton Keynes

- One-bedroom Flat
- Popular Redhouse Park development
- Located on Sheep Way, Newport Pagnell
- Open-plan living and dining area
- Modern fitted kitchen

Tenure: Leasehold EPC Rating: C
Council Tax Band: A Service Charge: 1535.60
Ground Rent: 359.36

This is a Leasehold property with details as follows; Term of Lease 125 years from 01 Jan 2009. Should you require further information please contact the branch. Please Note additional fees could be incurred for items such as Leasehold packs.

£175,000



view this property online [brownandmerry.co.uk/Property/NPL107979](https://www.brownandmerry.co.uk/Property/NPL107979)



Property Ref:
NPL107979 - 0004

1. MONEY LAUNDERING REGULATIONS Intending purchasers will be asked to produce identification documentation at a later stage and we would ask for your co-operation in order that there is no delay in agreeing the sale. 2. These particulars do not constitute part or all of an offer or contract. 3. The measurements indicated are supplied for guidance only and as such must be considered incorrect. Potential buyers are advised to recheck measurements before committing to any expense. 4. We have not tested any apparatus, equipment, fixtures or services and it is in the buyers interest to check the working condition of any appliances. 5. Where an EPC, or a Home Report (Scotland only) is held for this property, it is available for inspection at the branch by appointment. If you require a printed version of a Home Report, you will need to pay a reasonable production charge reflecting printing and other costs. 6. We are not able to offer an opinion either written or verbal on the content of these reports and this must be obtained from your legal representative. 7. Whilst we take care in preparing these reports, a buyer should ensure that his/her legal representative confirms as soon as possible all matters relating to title including the extent and boundaries of the property and other important matters before exchange of contracts.

Brown & Merry is a trading name of Sequence (UK) Limited which is registered in England and Wales under company number 4268443, Registered Office is Cumbria House, 16-20 Hockliffe Street, Leighton Buzzard, Bedfordshire, LU7 1GN. VAT Registration Number is 500 2481 05.


brown & merry



01908 611242



newportpagnell@brownandmerry.co.uk



74A High Street, Newport Pagnell, MILTON
KEYNES, Buckinghamshire, MK16 8AQ



[brownandmerry.co.uk](https://www.brownandmerry.co.uk)