



Martin Close, Neath Hill, Milton Keynes, MK14 6JG

welcome to

Martin Close, Neath Hill, Milton Keynes

Located in a quiet cul-de-sac within the popular Neath Hill area of Milton Keynes, this three-bedroom semi-detached property offers well-balanced accommodation, ideal for first-time buyers, young families, or investors alike.

Entrance Porch

Double-glazed door to the front and double-glazed door to the rear.

Entrance Hall

Stairs to the first floor and under stairs storage.

Cloakroom

Wash hand basin and low-level WC. Radiator.

Lounge

2 radiators and double-glazed window to the rear.

Dining Room

Double-glazed window to the rear and double-glazed door to the rear.

Kitchen

Fitted with a mix of wall and base units with work surface over, sink with drainer and a built-in Aga. Space for a dishwasher, washing machine and fridge/freezer. Double-glazed window to the front.

First Floor

Landing

Stairs from the ground floor, airing cupboard and loft access. Doors to all bedrooms and the family bathroom.

Bedroom One

Radiator and double-glazed window to the rear.

Bedroom Two

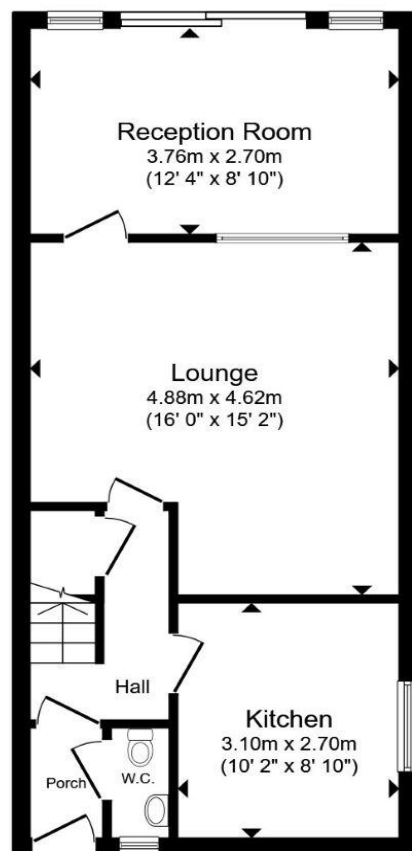
Radiator and double-glazed window to the front.

Bedroom Three

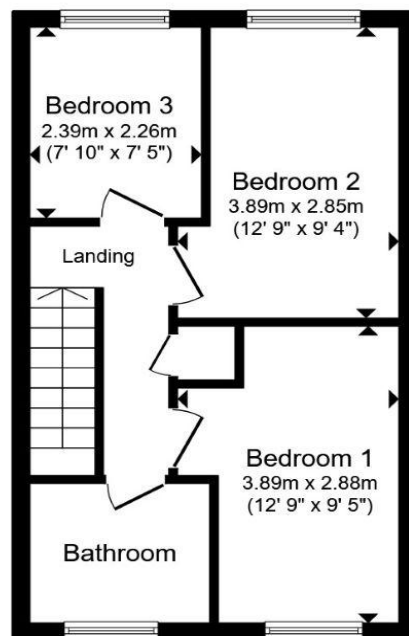
Radiator and double-glazed window to the rear.

Bathroom

Wash hand basin, low-level WC and bath with a shower over. Heated towel rail and extractor fan. Double-glazed obscured window to the front.



Ground Floor



First Floor

Total floor area 82.8 m² (891 sq.ft.) approx

This floor plan is for illustrative purposes only. It is not drawn to scale. Any measurements, floor areas (including any total floor area), openings and orientation are approximate. No details are guaranteed, they cannot be relied upon for any purpose and they do not form part of any agreement. No liability is taken for any error, omission or misstatement. A party must rely upon its own inspection(s). Powered by www.propertybox.io



welcome to
Martin Close,
Neath Hill, Milton Keynes

- Three-bedroom semi-detached home
- Quiet cul-de-sac location
- Spacious living room
- Kitchen/dining area with garden access
- Two double bedrooms and one single

Tenure: Freehold EPC Rating: Awaited
Council Tax Band: C

offers over
£325,000



view this property online [brownandmerry.co.uk/Property/NPL107965](https://www.brownandmerry.co.uk/Property/NPL107965)



Property Ref:
NPL107965 - 0003

1. MONEY LAUNDERING REGULATIONS Intending purchasers will be asked to produce identification documentation at a later stage and we would ask for your co-operation in order that there is no delay in agreeing the sale. 2. These particulars do not constitute part or all of an offer or contract. 3. The measurements indicated are supplied for guidance only and as such must be considered incorrect. Potential buyers are advised to recheck measurements before committing to any expense. 4. We have not tested any apparatus, equipment, fixtures or services and it is in the buyers interest to check the working condition of any appliances. 5. Where an EPC, or a Home Report (Scotland only) is held for this property, it is available for inspection at the branch by appointment. If you require a printed version of a Home Report, you will need to pay a reasonable production charge reflecting printing and other costs. 6. We are not able to offer an opinion either written or verbal on the content of these reports and this must be obtained from your legal representative. 7. Whilst we take care in preparing these reports, a buyer should ensure that his/her legal representative confirms as soon as possible all matters relating to title including the extent and boundaries of the property and other important matters before exchange of contracts.

Brown & Merry is a trading name of Sequence (UK) Limited which is registered in England and Wales under company number 4268443, Registered Office is Cumbria House, 16-20 Hockliffe Street, Leighton Buzzard, Bedfordshire, LU7 1GN. VAT Registration Number is 500 2481 05.


brown & merry



01908 611242



newportpagnell@brownandmerry.co.uk



74A High Street, Newport Pagnell, MILTON
KEYNES, Buckinghamshire, MK16 8AQ



[brownandmerry.co.uk](https://www.brownandmerry.co.uk)