



Nicholas Mead, Great Linford, Milton Keynes, MK14 5EL

welcome to

Nicholas Mead, Great Linford, Milton Keynes

Beautifully presented family home in the sought after area of Great Linford. This spacious, three-bedroom, end-of-terrace family home offers open-plan lounge/diner, modern kitchen, good sized bedrooms, private rear garden and allocated parking.

Entrance Hall

Door to the front, stairs to the first floor and storage cupboard. Doors to the cloakroom and the lounge.

Cloakroom

Wall mounted wash hand basin with tiled splash-back and low-level WC. Space for a washing machine and a double-glazed obscured window to the front.

Lounge

11' 7" x 11' 3" (3.53m x 3.43m)

TV point, radiator and 2 double-glazed windows to the front.

Dining Room

11' 3" x 9' 9" (3.43m x 2.97m)

Radiator and double-glazed doors leading out to the garden.

Kitchen

9' 7" x 8' 3" (2.92m x 2.51m)

Fitted with a mix of wall and base units with work surface over, butler style sink with mixer tap, electric oven and gas hob with extractor fan over. Space for a dishwasher and a fridge/freezer. Stairs to the first floor and double-glazed window to the rear.

First Floor

Landing

Stairs from the ground floor, storage cupboard housing the combi boiler and loft access. Doors to all bedrooms and the family bathroom.

Bedroom One

12' 4" x 11' 2" (3.76m x 3.40m)

Radiator and double-glazed window to the front.

Bedroom Two

11' 2" x 10' 1" (3.40m x 3.07m)

Radiator and double-glazed window to the rear.

Bedroom Three

10' 3" x 8' 4" (3.12m x 2.54m)

Radiator and double-glazed window to the rear.

Bathroom

Fully tiled with a pedestal wash hand basin with storage under, low-level WC and bath with shower over. Heated towel rail and a double-glazed obscured window to the side.

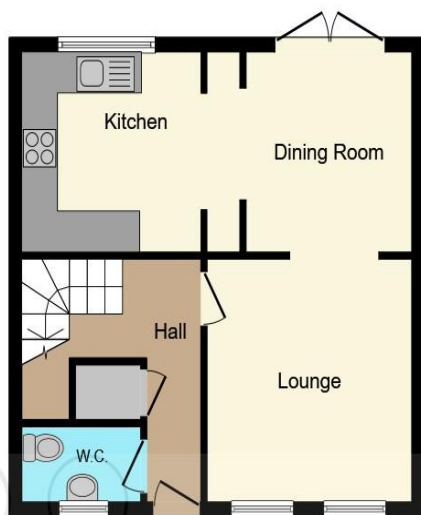
Outside

Front Garden

Paved with a path leading to the front door.

Rear Garden

Enclosed by panel fencing the garden is laid to lawn with a patio area and an outside tap.



Ground Floor



First Floor

This floor plan is for illustrative purposes only. It is not drawn to scale. Any measurements, floor areas (including any total floor area), openings and orientation are approximate. No details are guaranteed, they cannot be relied upon for any purpose and they do not form part of any agreement. No liability is taken for any error, omission or misstatement. A party must rely upon its own inspection(s). Powered by www.focalagent.com



welcome to

Nicholas Mead,

Great Linford, Milton Keynes

- SPACIOUS OPEN-PLAN LIVING & DINING AREA
- PRIVATE REAR GARDEN - IDEAL FOR ENTERTAINING
- ALLOCATED PARKING
- CLOSE TO SCHOOLS, SHOPS AND LOCAL AMENITIES
- EXCELLENT TRANSPORT TO MILTON KEYNES CENTRE & THE M1

Tenure: Freehold EPC Rating: E

Council Tax Band: B

£320,000



view this property online [brownandmerry.co.uk/Property/NPL107857](https://www.brownandmerry.co.uk/Property/NPL107857)



Property Ref:
NPL107857 - 0002

1. MONEY LAUNDERING REGULATIONS Intending purchasers will be asked to produce identification documentation at a later stage and we would ask for your co-operation in order that there is no delay in agreeing the sale. 2. These particulars do not constitute part or all of an offer or contract. 3. The measurements indicated are supplied for guidance only and as such must be considered incorrect. Potential buyers are advised to recheck measurements before committing to any expense. 4. We have not tested any apparatus, equipment, fixtures or services and it is in the buyers interest to check the working condition of any appliances. 5. Where an EPC, or a Home Report (Scotland only) is held for this property, it is available for inspection at the branch by appointment. If you require a printed version of a Home Report, you will need to pay a reasonable production charge reflecting printing and other costs. 6. We are not able to offer an opinion either written or verbal on the content of these reports and this must be obtained from your legal representative. 7. Whilst we take care in preparing these reports, a buyer should ensure that his/her legal representative confirms as soon as possible all matters relating to title including the extent and boundaries of the property and other important matters before exchange of contracts.

Brown & Merry is a trading name of Sequence (UK) Limited which is registered in England and Wales under company number 4268443, Registered Office is Cumbria House, 16-20 Hockliffe Street, Leighton Buzzard, Bedfordshire, LU7 1GN. VAT Registration Number is 500 2481 05.


brown & merry



01908 611242



newportpagnell@brownandmerry.co.uk



74A High Street, Newport Pagnell, MILTON
KEYNES, Buckinghamshire, MK16 8AQ



[brownandmerry.co.uk](https://www.brownandmerry.co.uk)