



**Cape End, Redhouse Park Milton Keynes MK14 5FE**

**welcome to**

## **Cape End, Redhouse Park Milton Keynes**

A COACH HOUSE situated on the modern and popular REDHOUSE PARK development and being close to local amenities and schools as well as picturesque walks. The property boasts an OPEN PLAN LOUNGE/KITCHEN/DINER DOUBLE BEDROOMS, EN-SUITE and BATHROOM, private CARPORT PARKING and visitor parking.

### **Entrance Porch:**

Double glazed door, radiator, double glazed window to front, stairs rising to landing.

### **Lounge / Diner / Kitchen:**

21' 4" max x 20' 7" max ( 6.50m max x 6.27m max )  
Double glazed window to front and rear, Juliet balcony to front, open plan into kitchen area, radiator.

### **Kitchen Area:**

Fitted with a range of wall and base units with work surfaces over, sink with drainer, space for fridge and washing machine, gas hob, electric oven, open into dining area.

### **Bedroom One:**

15' 2" max x 8' 9" max ( 4.62m max x 2.67m max )  
Double glazed window to rear, radiator, T.V. point, door to en-suite. Integrated wardrobe, radiator.

### **En-Suite:**

Fitted with a suite to comprise: Shower cubicle, wash hand basin and w.c. Shaver point, partly tiled, extractor fan. Double glazed window to rear.

### **Bedroom Two:**

12' 5" x 7' 7" ( 3.78m x 2.31m )  
Double glazed window to front, radiator.

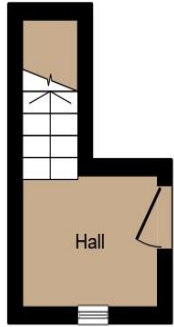
### **Bathroom:**

Fitted with a suite to comprise: Bath with mixer taps, wash hand basin and w.c. Radiator, partly tiled, extractor fan, shaver point, double glazed window to front.

### **Outside:**

Car port and visitor parking.





**Ground Floor**



**First Floor**

This floor plan is for illustrative purposes only. It is not drawn to scale. Any measurements, floor areas (including any total floor area), openings and orientation are approximate. No details are guaranteed, they cannot be relied upon for any purpose and they do not form part of any agreement. No liability is taken for any error, omission or misstatement. A party must rely upon its own inspection(s). Powered by [www.focalagent.com](http://www.focalagent.com)



**welcome to**  
**Cape End,**  
**Redhouse Park Milton Keynes**

- IDEAL FIRST TIME BUY
- TWO DOUBLE BEDROOMS; THE MAIN WITH ENSUITE
- PRIVATE FRONT DOOR
- OPEN PLAN LIVING
- CARPORT PARKING

Tenure: Leasehold EPC Rating: C

This is a Leasehold property with details as follows; Term of Lease 99 years from 13 Feb 2009. Should you require further information please contact the branch. Please Note additional fees could be incurred for items such as Leasehold packs.

**£245,000**



**view this property online** [brownandmerry.co.uk/Property/NPL106831](https://www.brownandmerry.co.uk/Property/NPL106831)



Property Ref:  
NPL106831 - 0004

1. MONEY LAUNDERING REGULATIONS Intending purchasers will be asked to produce identification documentation at a later stage and we would ask for your co-operation in order that there is no delay in agreeing the sale. 2. These particulars do not constitute part or all of an offer or contract. 3. The measurements indicated are supplied for guidance only and as such must be considered incorrect. Potential buyers are advised to recheck measurements before committing to any expense. 4. We have not tested any apparatus, equipment, fixtures or services and it is in the buyers interest to check the working condition of any appliances. 5. Where an EPC, or a Home Report (Scotland only) is held for this property, it is available for inspection at the branch by appointment. If you require a printed version of a Home Report, you will need to pay a reasonable production charge reflecting printing and other costs. 6. We are not able to offer an opinion either written or verbal on the content of these reports and this must be obtained from your legal representative. 7. Whilst we take care in preparing these reports, a buyer should ensure that his/her legal representative confirms as soon as possible all matters relating to title including the extent and boundaries of the property and other important matters before exchange of contracts.

Brown & Merry is a trading name of Sequence (UK) Limited which is registered in England and Wales under company number 4268443, Registered Office is Cumbria House, 16-20 Hockliffe Street, Leighton Buzzard, Bedfordshire, LU7 1GN. VAT Registration Number is 500 2481 05.

brown & merry



**01908 611242**



[newportpagnell@brownandmerry.co.uk](mailto:newportpagnell@brownandmerry.co.uk)



74A High Street, Newport Pagnell, MILTON  
KEYNES, Buckinghamshire, MK16 8AQ



**[brownandmerry.co.uk](https://www.brownandmerry.co.uk)**