



Station Terrace, Great Linford Milton Keynes MK14 5AP

welcome to

Station Terrace, Great Linford Milton Keynes

Do you want a rear garden approximately 100` in length? If so this period, mid-terrace, family home may be just what you're looking for. The lounge has a bay window to the front & opens into the dining area, a downstairs bathroom & upstairs bedrooms. NO UPPER CHAIN involved.

Entrance Hall:

Door to front, radiator, stairs to first floor, door into living room.

Living Room Area:

12' 6" into bay x 12' 5" max (3.81m into bay x 3.78m max)
Double glazed bay window to front, radiator, squared archway into dining area.

Dining Area:

12' 6" x 11' 5" max (3.81m x 3.48m max)
Double glazed window to rear, radiator, door into kitchen, squared archway into lounge.

Kitchen:

9' 6" x 7' 5" (2.90m x 2.26m)
Double glazed window to side, wall and base units with work surfaces over, stainless steel sink with drainer, electric oven, gas hob, extractor fan, space for washing machine and fridge freezer.

Bathroom:

Fitted with a suite to comprise bath with mixer taps, wash hand basin and w.c. Partly tiled, radiator, double glazed window to side.

Landing:

Doors to:

Bedroom One:

14' 1" max x 10' 7" (4.29m max x 3.23m)
Double glazed window to front, radiator.

Bedroom Two:

12' 9" x 8' 6" max (3.89m x 2.59m max)
Double glazed window to rear, radiator.

Bedroom Three:

9' 6" x 7' 6" (2.90m x 2.29m)
Double glazed window to rear.

Outside:

Front:

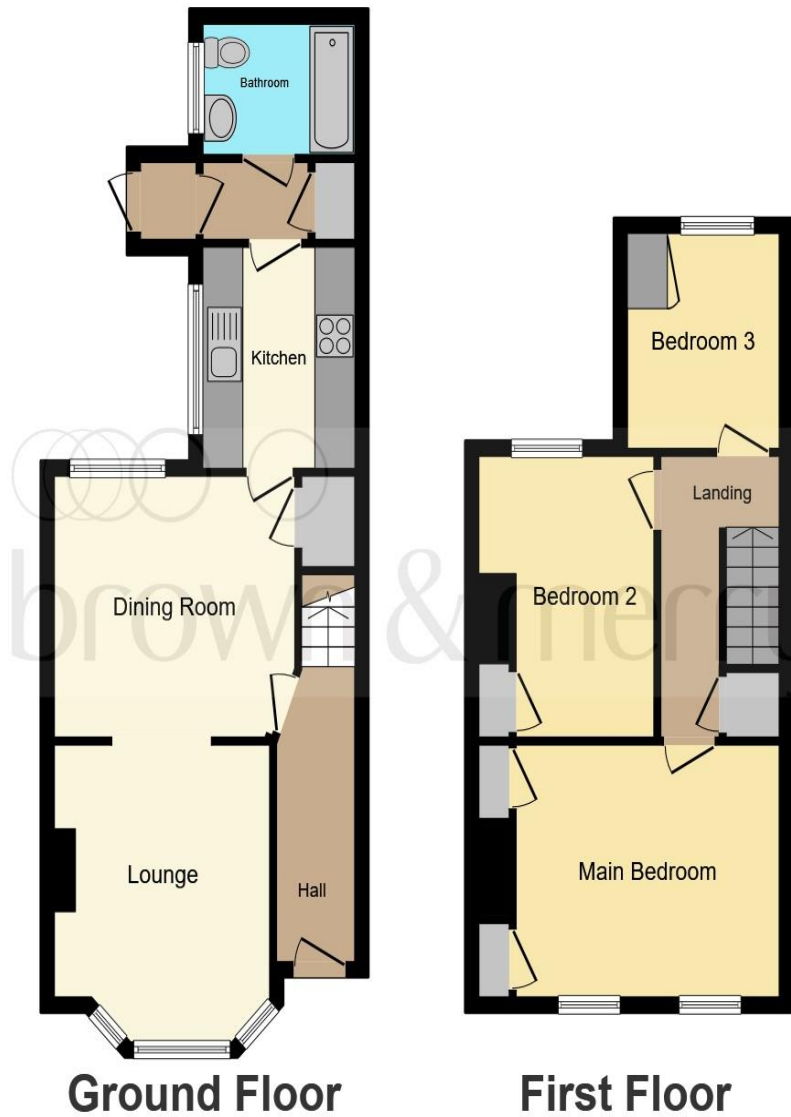
Paved with patio slabs, outside power point.

Rear Garden:

Over 100' in length and mainly laid to lawn with gated access.

Agent's Note:

The front of the property doesn't have a dropped kerb so we cannot say off road parking.



This floor plan is for illustrative purposes only. It is not drawn to scale. Any measurements, floor areas (including any total floor area), openings and orientation are approximate. No details are guaranteed, they cannot be relied upon for any purpose and they do not form part of any agreement. No liability is taken for any error, omission or misstatement. A party must rely upon its own inspection(s). Powered by www.focalagent.com



welcome to
Station Terrace,
Great Linford Milton Keynes

- NO UPPER CHAIN
- OVER 100' REAR GARDEN
- THREE BEDROOMS
- PERIOD PROPERTY
- GREAT LOCATION

Tenure: Freehold EPC Rating: C

guide price

£300,000



view this property online [brownandmerry.co.uk/Property/NPL106819](https://www.brownandmerry.co.uk/Property/NPL106819)



Property Ref:
NPL106819 - 0003

1. MONEY LAUNDERING REGULATIONS Intending purchasers will be asked to produce identification documentation at a later stage and we would ask for your co-operation in order that there is no delay in agreeing the sale. 2. These particulars do not constitute part or all of an offer or contract. 3. The measurements indicated are supplied for guidance only and as such must be considered incorrect. Potential buyers are advised to recheck measurements before committing to any expense. 4. We have not tested any apparatus, equipment, fixtures or services and it is in the buyers interest to check the working condition of any appliances. 5. Where an EPC, or a Home Report (Scotland only) is held for this property, it is available for inspection at the branch by appointment. If you require a printed version of a Home Report, you will need to pay a reasonable production charge reflecting printing and other costs. 6. We are not able to offer an opinion either written or verbal on the content of these reports and this must be obtained from your legal representative. 7. Whilst we take care in preparing these reports, a buyer should ensure that his/her legal representative confirms as soon as possible all matters relating to title including the extent and boundaries of the property and other important matters before exchange of contracts.

Brown & Merry is a trading name of Sequence (UK) Limited which is registered in England and Wales under company number 4268443, Registered Office is Cumbria House, 16-20 Hockliffe Street, Leighton Buzzard, Bedfordshire, LU7 1GN. VAT Registration Number is 500 2481 05.

brown & merry



01908 611242



newportpagnell@brownandmerry.co.uk



74A High Street, Newport Pagnell, MILTON
KEYNES, Buckinghamshire, MK16 8AQ



[brownandmerry.co.uk](https://www.brownandmerry.co.uk)