



Beaconsfield Place, Newport Pagnell MK16 0EB

welcome to

Beaconsfield Place, Newport Pagnell

Tucked away in the corner of a CUL-DE-SAC is this STUNNING END OF TERRACE PERIOD PROPERTY. Offering well presented accommodation to comprise: LOUNGE/DINING room with SASH WINDOWS, KITCHEN to the rear, UPSTAIRS BEDROOMS and BATHROOM. Outside gardens to FRONT and REAR.

Lounge:

12' 8" max x 10' 2" max (3.86m max x 3.10m max)
Double glazed sash window to front, radiator, original wood flooring. Opening into:

Dining Room:

13' 5" max x 11' 8" max (4.09m max x 3.56m max)
Stairs rising to first floor landing with storage under stairs, original wood flooring, double glazed sash window to rear, open fireplace.

Kitchen:

13' 1" max x 8' 3" (3.99m max x 2.51m)
Fitted with a range of wall and base units with solid oak work surfaces over, butler's sink, space for oven and fridge freezer, integrated microwave, integrated dishwasher, radiator, tiled flooring, double glazed door and window to rear.

Utility Area:

Plumbing for a washing machine, , central heating boiler, partly tiled.

Landing:

Doors to upstairs rooms.

Bedroom One:

12' 8" max x 11' 4" max (3.86m max x 3.45m max)
Double glazed sash window to front, feature fireplace, radiator.

Bedroom Two:

11' 7" max x 9' 7" max (3.53m max x 2.92m max)
Double glazed sash window to rear, radiator, fitted wardrobes.

Bathroom:

Fitted with a suite to comprise bath with shower fixture, wash hand basin with cupboard under and w.c. Heated towel rail, porcelain tiles to floor, partly tiled walls, sky light.

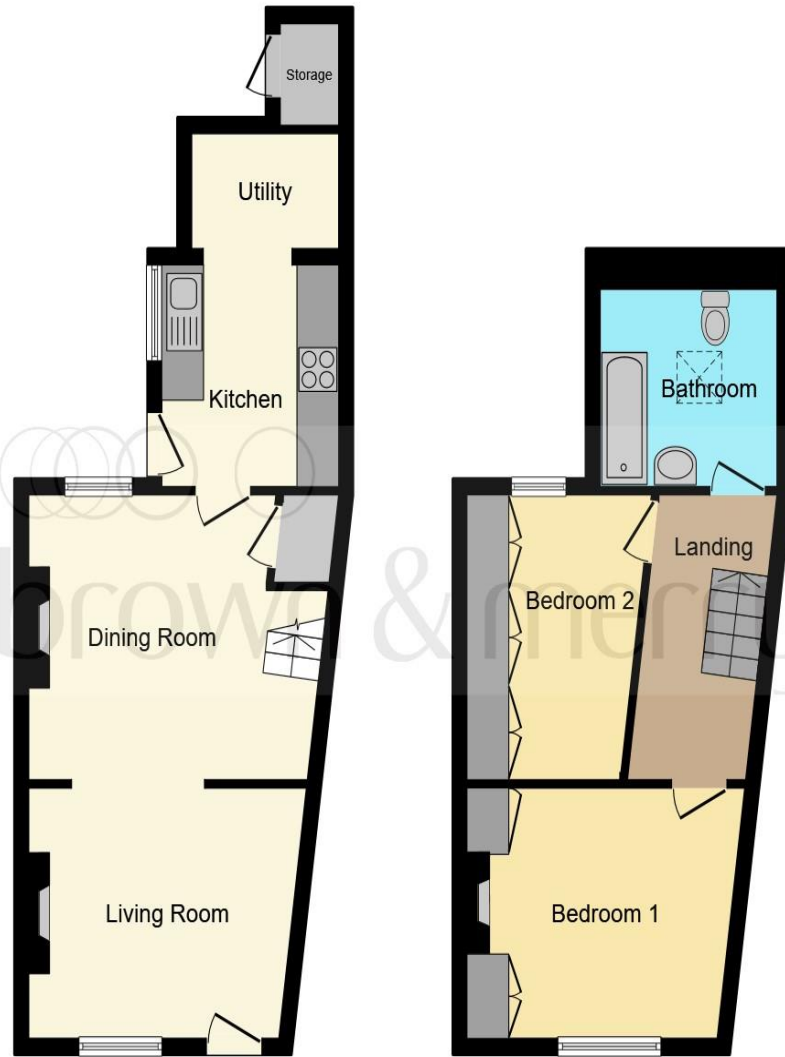
Loft Space:

Accessed via a ladder, boarded and insulated with lighting.

Outside:

Rear Garden:

Partly paved, outdoor tap and outdoor storage, shed with electrics (flat roof replaced three years ago, insulated and boarded).



Ground Floor

First Floor

This floor plan is for illustrative purposes only. It is not drawn to scale. Any measurements, floor areas (including any total floor area), openings and orientation are approximate. No details are guaranteed, they cannot be relied upon for any purpose and they do not form part of any agreement. No liability is taken for any error, omission or misstatement. A party must rely upon its own inspection(s). Powered by www.focalagent.com



welcome to
Beaconsfield Place,
Newport Pagnell

- PERIOD END OF TERRACE HOUSE
- LOUNGE/DINER
- TWO BEDROOMS
- GARDEN
- CLOSE TO TOWN CENTRE

Tenure: Freehold EPC Rating: E

guide price

£315,000



view this property online [brownmerry.co.uk/Property/NPL107051](https://www.brownmerry.co.uk/Property/NPL107051)



Property Ref:
NPL107051 - 0012

1. MONEY LAUNDERING REGULATIONS Intending purchasers will be asked to produce identification documentation at a later stage and we would ask for your co-operation in order that there is no delay in agreeing the sale. 2. These particulars do not constitute part or all of an offer or contract. 3. The measurements indicated are supplied for guidance only and as such must be considered incorrect. Potential buyers are advised to recheck measurements before committing to any expense. 4. We have not tested any apparatus, equipment, fixtures or services and it is in the buyers interest to check the working condition of any appliances. 5. Where an EPC, or a Home Report (Scotland only) is held for this property, it is available for inspection at the branch by appointment. If you require a printed version of a Home Report, you will need to pay a reasonable production charge reflecting printing and other costs. 6. We are not able to offer an opinion either written or verbal on the content of these reports and this must be obtained from your legal representative. 7. Whilst we take care in preparing these reports, a buyer should ensure that his/her legal representative confirms as soon as possible all matters relating to title including the extent and boundaries of the property and other important matters before exchange of contracts.

Brown & Merry is a trading name of Sequence (UK) Limited which is registered in England and Wales under company number 4268443, Registered Office is Cumbria House, 16-20 Hockliffe Street, Leighton Buzzard, Bedfordshire, LU7 1GN. VAT Registration Number is 500 2481 05.

brown & merry



01908 611242



newportpagnell@brownmerry.co.uk



74A High Street, Newport Pagnell, MILTON
KEYNES, Buckinghamshire, MK16 8AQ



[brownmerry.co.uk](https://www.brownmerry.co.uk)