



Nicholas Mead, Great Linford Milton Keynes MK14 5EN

welcome to

Nicholas Mead, Great Linford Milton Keynes

A STUNNING E X T E N D E D mid terrace family home situated in this popular area. Benefits to the property include a DOWNSTAIRS SHOWER ROOM, KITCHEN/DINER, well proportioned BEDROOMS and further FAMILY BATHROOM. Outside garden to front and GOOD SIZED REAR GARDEN.

Entrance Hall:

Door to front, stairs rising to first floor landing.
Doors to shower room, living room and utility.

Shower Room:

Fitted with a suite to comprise: Shower cubicle, wash hand basin and w.c. fully tiled, extractor fan. heated towel rail, double glazed window to front.

Lounge:

11' 7" x 11' 3" (3.53m x 3.43m)
Double glazed window to front, radiator, wood laminate flooring, T.V. point.

Kitchen / Diner:

19' 4" max x 19' 1" max (5.89m max x 5.82m max)
Fitted with a range of wall and base units with Corian work surfaces over, sink with drainer, integrated dish washer and microwave, gas hob with extractor fan over, part laminate flooring, double glazed window and double glazed door to rear.

Utility Room:

Fitted with wall and base units with work surfaces over, plumbing for a washing machine.

Landing:

Storage cupboard with central heating boiler, access to part boarded loft via pull down ladder.

Bedroom One:

11' 7" x 11' 3" (3.53m x 3.43m)
Double glazed window to front, radiator.

Bedroom Two:

11' 2" x 9' 9" (3.40m x 2.97m)
Double glazed window to rear, radiator.

Bedroom Three:

10' max x 8' 5" max (3.05m max x 2.57m max)
Double glazed window to rear, radiator, wood laminate flooring.

Bathroom:

Fitted with a suite to comprise: P shaped bath with shower over, wash hand basin on a vanity unit and w.c. Heated towel rail, extractor fan, double glazed window to rear.

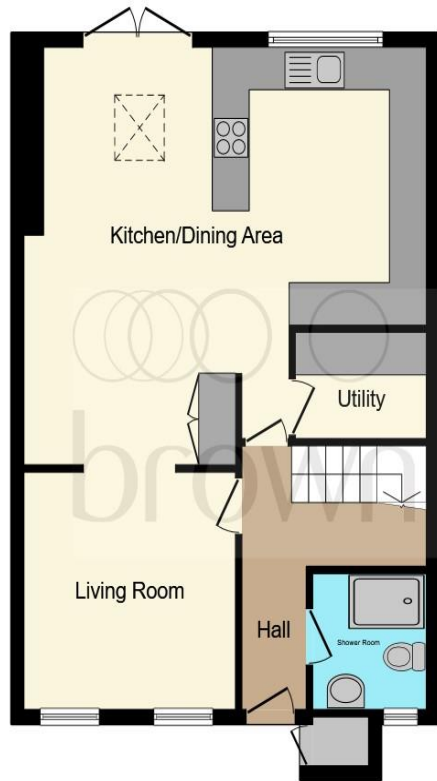
Outside:

Front Garden:

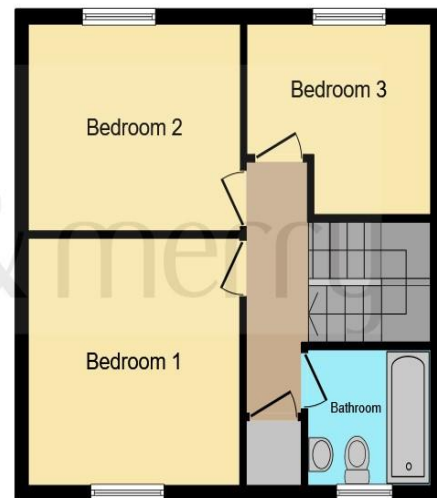
Set behind a hedgerow, laid to lawn with a pathway leading to front door.

Rear Garden:

Large shaped patio area with lawn areas either side, steps down with raised borders either side leading to further area of lawn with decked seating area. Perfect for a growing family or a keen gardener. This garden has everything to offer.



Ground Floor



First Floor

This floor plan is for illustrative purposes only. It is not drawn to scale. Any measurements, floor areas (including any total floor area), openings and orientation are approximate. No details are guaranteed, they cannot be relied upon for any purpose and they do not form part of any agreement. No liability is taken for any error, omission or misstatement. A party must rely upon its own inspection(s). Powered by www.focalagent.com



welcome to

Nicholas Mead,

Great Linford Milton Keynes

- EXTENDED MID TERRACE FAMILY HOME
- THREE BEDROOMS
- KITCHEN/DINER
- DOWNSTAIRS SHOWER ROOM & UPSTAIRS BATHROOM
- GARDEN TO FRONT AND REAR

Tenure: Freehold EPC Rating: C

guide price

£360,000



view this property online [brownandmerry.co.uk/Property/NPL107021](https://www.brownandmerry.co.uk/Property/NPL107021)



Property Ref:
NPL107021 - 0002

1. MONEY LAUNDERING REGULATIONS Intending purchasers will be asked to produce identification documentation at a later stage and we would ask for your co-operation in order that there is no delay in agreeing the sale. 2. These particulars do not constitute part or all of an offer or contract. 3. The measurements indicated are supplied for guidance only and as such must be considered incorrect. Potential buyers are advised to recheck measurements before committing to any expense. 4. We have not tested any apparatus, equipment, fixtures or services and it is in the buyers interest to check the working condition of any appliances. 5. Where an EPC, or a Home Report (Scotland only) is held for this property, it is available for inspection at the branch by appointment. If you require a printed version of a Home Report, you will need to pay a reasonable production charge reflecting printing and other costs. 6. We are not able to offer an opinion either written or verbal on the content of these reports and this must be obtained from your legal representative. 7. Whilst we take care in preparing these reports, a buyer should ensure that his/her legal representative confirms as soon as possible all matters relating to title including the extent and boundaries of the property and other important matters before exchange of contracts.

Brown & Merry is a trading name of Sequence (UK) Limited which is registered in England and Wales under company number 4268443, Registered Office is Cumbria House, 16-20 Hockliffe Street, Leighton Buzzard, Bedfordshire, LU7 1GN. VAT Registration Number is 500 2481 05.

brown & merry



01908 611242



newportpagnell@brownandmerry.co.uk



74A High Street, Newport Pagnell, MILTON
KEYNES, Buckinghamshire, MK16 8AQ



[brownandmerry.co.uk](https://www.brownandmerry.co.uk)