

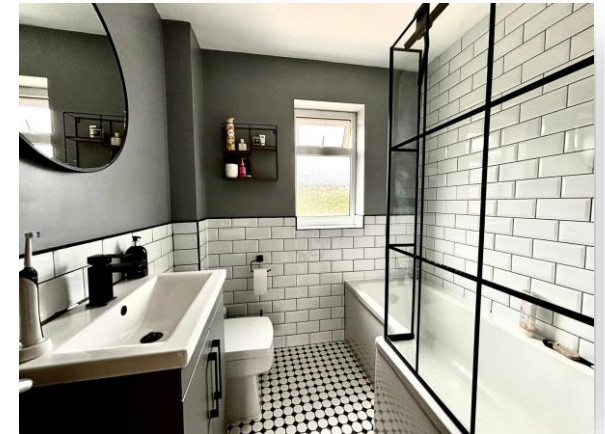


Letton Close, Shipdham, Thetford, IP25 7NS

welcome to

Letton Close, Shipdham, Thetford

>> Completely Renovated Throughout! Check out this contemporary style 2 double bedroom detached bungalow, occupying a corner plot position within this sought-after development in Shipdham. This superb home boasts a 17' lounge/diner, fully integrated kitchen, enclosed garden, parking & garage!



Description

We are extremely pleased to welcome to the market this beautifully presented 2 bedroom detached bungalow, located in a small, peaceful development within the popular Norfolk village of Shipdham.

Finished to a contemporary style throughout, the accommodation briefly comprises; entrance hall, well-proportioned lounge/dining room with central log burner - perfect for the upcoming winter months, fully fitted modern kitchen with integrated appliances, separate utility room, two great sized bedrooms, with built-in wardrobes to master, and the stylish family bathroom suite.

Coupled with the accommodation, the property further benefits from gas fired central heating and double glazed windows throughout. Outside, a hard standing driveway provides off-road parking and access to the single garage, together with a privately enclosed, well-tended rear garden offering space for outside entertaining and relaxing.

Every detail has been thoughtfully curated in this high-standard renovation, making it a perfect blend of comfort and style. Internal and external viewings are essential to fully appreciate the accommodation, quality and location offered for sale!

The Accommodation

Double glazed external entrance door opening to;

Entrance Hall

Wood effect flooring, built-in storage cupboard, radiator and doors opening to all rooms.

Lounge/Dining Room

17' 1" x 10' 4" (5.21m x 3.15m)

Wood effect flooring, central log burner with tiled hearth, radiator, double glazed window to rear aspect and double glazed patio doors opening to the rear garden.

Kitchen

10' 5" x 9' 3" (3.17m x 2.82m)

A stylish range of wall and floor mounted units with marble effect rolled edge work surfaces over and upstands, inset sink and drainer with mixer tap, built-in electric oven, inset electric hob with splashback and extractor hood over, integrated dishwasher, integrated fridge freezer, built-in waste bin, tiled flooring, inset ceiling spotlights, double glazed window to front aspect and door opening to;

Utility Room

Fitted base unit with marble effect rolled edge work surface over, space for washing machine and tiled flooring.

Bedroom One

10' 6" x 9' 2" (3.20m x 2.79m)

Fitted carpet flooring, built-in wardrobe, radiator and double glazed window to rear aspect.

Bedroom Two

10' 4" x 7' 7" (3.15m x 2.31m)

Fitted carpet flooring, radiator and double glazed window to front aspect.

Bathroom

Three piece suite comprising low level w.c, hand wash vanity unit, P-shaped bath with shower over, part tiled walls, tiled flooring, heated towel rail and double glazed obscure glass window to front aspect.

Outside

The property is approached by a hard standing driveway which provides generous off-road parking and access to the garage. The remainder of the front is laid to shingle, for ease of maintenance, and pathways lead to the main entrance and rear gate.

Stepping out to the rear, the garden is laid to well-tended lawn with a charming walkways leading to the patio seating area, ideal for outside entertaining and dining. The property is fully enclosed by timber fencing and mature shrubberies which provide privacy to the home and secure the properties boundaries.

Garage

With power, lighting and up and over door to front.

Location

Shipdham is a well-served village, located between the market towns of Dereham and Watton and is approximately 22 miles to the centre of Norwich. The village boasts extensive amenities including a primary school, which incorporates a play group, shops, a doctor's surgery, a public house and an attractive church. There is also a regular bus service to both Dereham and Norwich, where further amenities and facilities can be found.



view this property online williamhbrown.co.uk/Property/DRM116856



welcome to

Letton Close, Shipdham, Thetford

- Renovated 2 Double Bedroom Detached Bungalow
- 17' Lounge/Dining Room With Complementary Log Burner
- Contemporary Fitted Kitchen And Separate Utility Room
- Stylish Family Bathroom Suite
- Gas Fired Central Heating And Double Glazed Windows

Tenure: Freehold EPC Rating: E

£300,000



directions to this property:

Upon entering the village of Shipdham from the Dereham direction, take the second left hand turn into Letton Road. Proceed and take the first left hand turn into Letton Close where the property can be found on the left hand side, identified by our William H Brown 'For Sale' board.



Please note the marker reflects the postcode not the actual property

view this property online williamhbrown.co.uk/Property/DRM116856



Property Ref:
DRM116856 - 0002

1. MONEY LAUNDERING REGULATIONS Intending purchasers will be asked to produce identification documentation at a later stage and we would ask for your co-operation in order that there is no delay in agreeing the sale. 2. These particulars do not constitute part or all of an offer or contract. 3. The measurements indicated are supplied for guidance only and as such must be considered incorrect. Potential buyers are advised to recheck measurements before committing to any expense. 4. We have not tested any apparatus, equipment, fixtures or services and it is in the buyers interest to check the working condition of any appliances. 5. Where an EPC, or a Home Report (Scotland only) is held for this property, it is available for inspection at the branch by appointment. If you require a printed version of a Home Report, you will need to pay a reasonable production charge reflecting printing and other costs. 6. We are not able to offer an opinion either written or verbal on the content of these reports and this must be obtained from your legal representative. 7. Whilst we take care in preparing these reports, a buyer should ensure that his/her legal representative confirms as soon as possible all matters relating to title including the extent and boundaries of the property and other important matters before exchange of contracts.

William H Brown is a trading name of Sequence (UK) Limited which is registered in England and Wales under company number 4268443, Registered Office is Cumbria House, 16-20 Hockliffe Street, Leighton Buzzard, Bedfordshire, LU7 1GN. VAT Registration Number is 500 2481 05.



william h brown



01362 692238



Dereham@williamhbrown.co.uk



3 Market Place, DEREHAM, Norfolk, NR19 2AW



williamhbrown.co.uk