



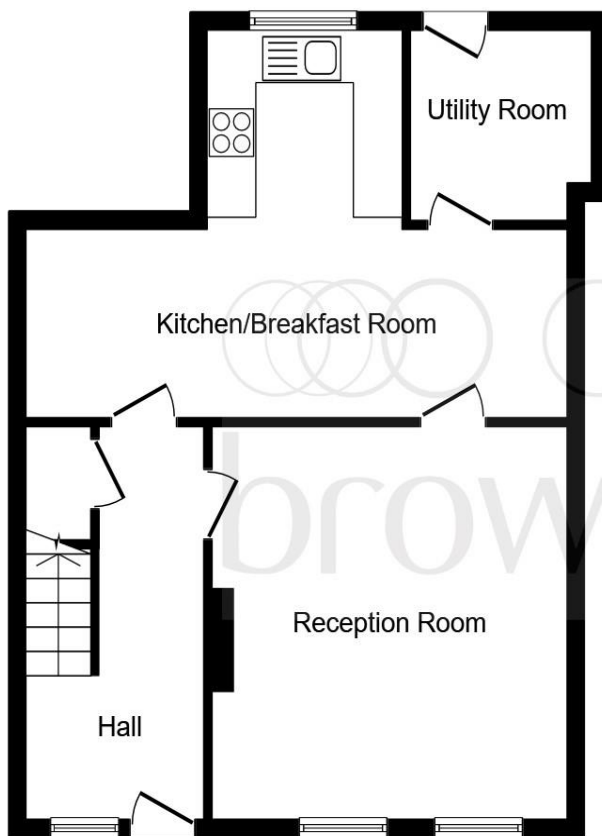
Belswains Lane,HEMEL HEMPSTEAD HP3 9XE

welcome to

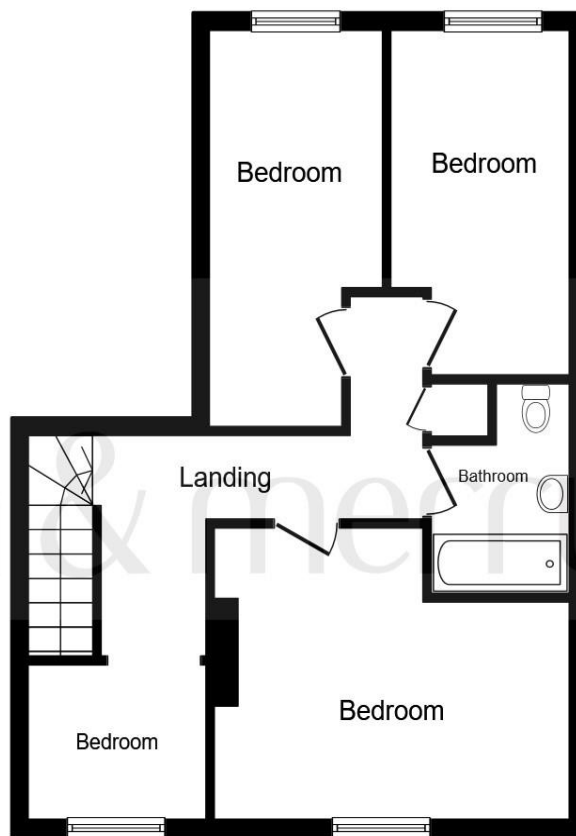
Belswains Lane, HEMEL HEMPSTEAD

Located in the sought after area of Nash Mills is this four bedroom CHARACTER HOME. Offering spacious living accommodation features include modern kitchen, modern bathroom, utility room and off street parking.

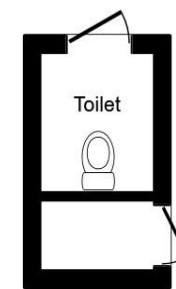




Ground Floor



First Floor



Outbuilding

Entrance Hall

Lounge

14' 3" x 14' 2" (4.34m x 4.32m)

Kitchen / Diner

14' 6" To Max x 21' 8" To Max (4.42m To Max x 6.60m To Max)

Utility Room

7' 4" x 5' 8" (2.24m x 1.73m)

Landing

Bedroom One

14' 8" x 10' 9" (4.47m x 3.28m)

Bedroom Two

12' 9" x 7' 1" (3.89m x 2.16m)

Bedroom Three

15' 4" x 7' 8" (4.67m x 2.34m)

Study / Nursery

5' 9" x 5' 7" (1.75m x 1.70m)

Bathroom

Outside

Rear Garden

Parking

Total floor area 110.0 sq. m. (1,184 sq. ft.) approx

This floor plan is for illustrative purposes only. It is not drawn to scale. Any measurements, floor areas (including any total floor area), openings and orientation are approximate. No details are guaranteed, they cannot be relied upon for any purpose and they do not form part of any agreement. No liability is taken for any error, omission or misstatement. A party must rely upon its own inspection(s). Plan produced for Brown & Merry. Powered by www.focalagent.com

welcome to

Belswains Lane, HEMEL HEMPSTEAD

- Character Home
- Sought After Residential Area
- Spacious Living Accommodation
- Four Bedrooms
- Modern Kitchen & Bathroom

Tenure: Freehold EPC Rating: D

offers over

£425,000



Please note the marker reflects the
postcode not the actual property

view this property online [brownandmerry.co.uk/Property/HHD108169](https://www.brownandmerry.co.uk/Property/HHD108169)

see all our properties on [zoopla.co.uk](https://www.zoopla.co.uk) | [rightmove.co.uk](https://www.rightmove.co.uk) | [brownandmerry.co.uk](https://www.brownandmerry.co.uk)



Property Ref:
HHD108169 - 0004

1. MONEY LAUNDERING REGULATIONS Intending purchasers will be asked to produce identification documentation at a later stage and we would ask for your co-operation in order that there is no delay in agreeing the sale. 2. These particulars do not constitute part or all of an offer or contract. 3. The measurements indicated are supplied for guidance only and as such must be considered incorrect. Potential buyers are advised to recheck measurements before committing to any expense. 4. We have not tested any apparatus, equipment, fixtures or services and it is in the buyers interest to check the working condition of any appliances. 5. Where an EPC, or a Home Report (Scotland only) is held for this property, it is available for inspection at the branch by appointment. If you require a printed version of a Home Report, you will need to pay a reasonable production charge reflecting printing and other costs. 6. We are not able to offer an opinion either written or verbal on the content of these reports and this must be obtained from your legal representative. 7. Whilst we take care in preparing these reports, a buyer should ensure that his/her legal representative confirms as soon as possible all matters relating to title including the extent and boundaries of the property and other important matters before exchange of contracts.


brown & merry



01442 232400



HemelHempstead@brownandmerry.co.uk



57 Marlowes, HEMEL HEMPSTEAD,
Hertfordshire, HP1 1LE



[brownandmerry.co.uk](https://www.brownandmerry.co.uk)