



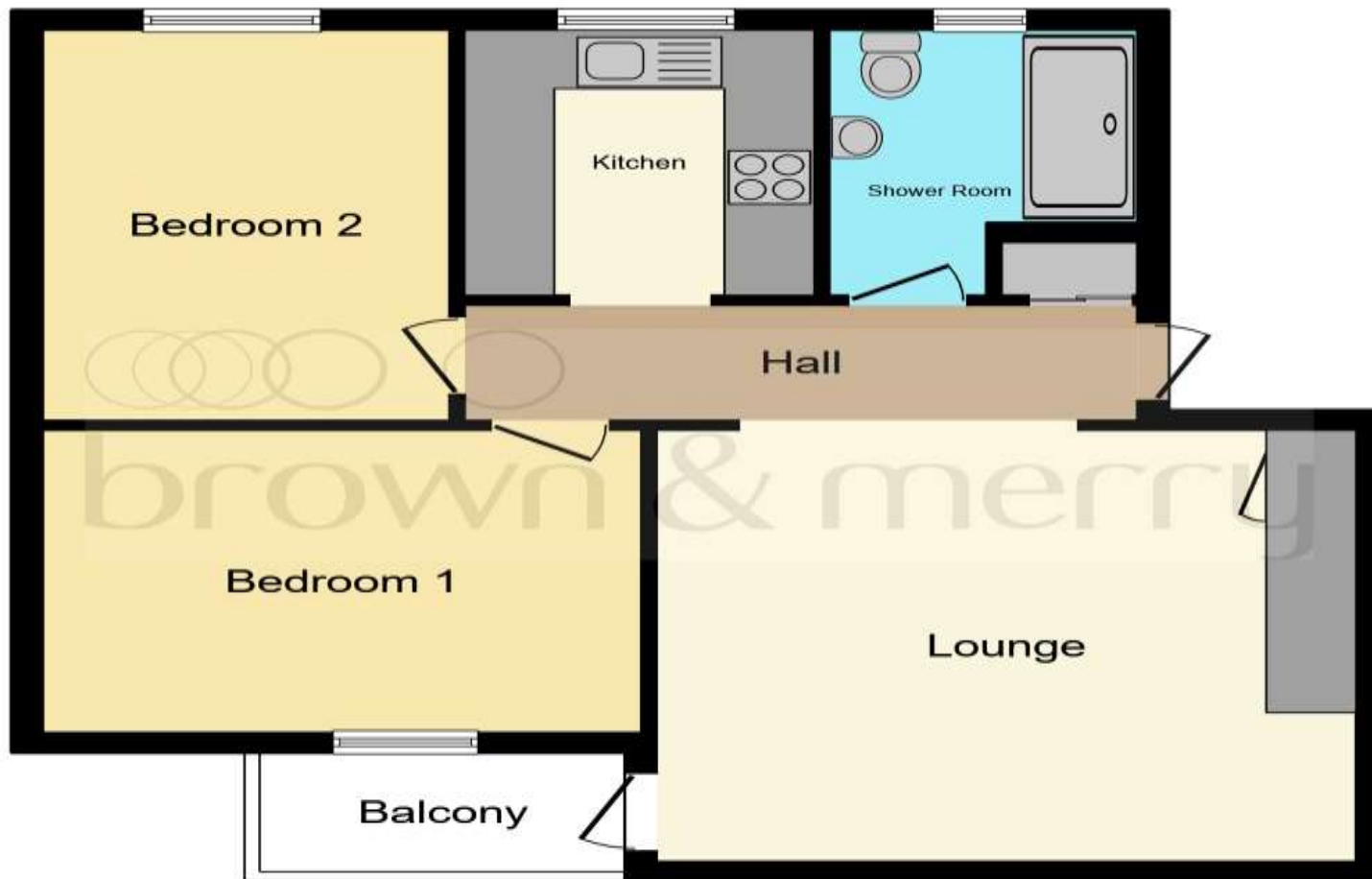
Everest Way, Hemel Hempstead HP2 4HZ

welcome to

Everest Way, Hemel Hempstead

Move-In Ready! This stylish 2-bed upper-floor flat in popular Adeyfield has been fully refurbished, featuring a spacious living area with a balcony, a modern kitchen, and gas central heating. Steps from Queens Square-ideal for first-time buyers or investors!





Entrance Hall

Lounge

17' 10" To Max x 13' 8" extending to 15' 3" To Max (5.44m To Max x 4.17m extending to 4.65m To Max)

Balcony

Kitchen

8' 10" x 7' 7" (2.69m x 2.31m)

Bedroom One

12' 11" To Max x 10' 1" To Max (3.94m To Max x 3.07m To Max)

Bedroom Two

12' 10" To Max x 8' 9" To Max (3.91m To Max x 2.67m To Max)

Shower Room / Utility Room

Total floor area 63.3 m² (682 sq.ft.) approx

This floor plan is for illustrative purposes only. It is not drawn to scale. Any measurements, floor areas (including any total floor area), openings and orientation are approximate. No details are guaranteed, they cannot be relied upon for any purpose and they do not form part of any agreement. No liability is taken for any error, omission or misstatement. A party must rely upon its own inspection(s). Powered by www.focalagent.com

welcome to

Everest Way, Hemel Hempstead

- Popular Residential Area
- Two Bedroom Upper Floor Flat
- Very Well Presented Throughout
- Spacious Living Accommodation Plus Balcony & Ample Storage
- Modern Kitchen

Tenure: Leasehold EPC Rating: C

This is a Leasehold property with details as follows; Term of Lease 125 years from 14 Jul 1989. Should you require further information please contact the branch. Please Note additional fees could be incurred for items such as Leasehold packs.

£260,000



Please note the marker reflects the postcode not the actual property

view this property online [brownandmerry.co.uk/Property/HHD110768](https://www.brownandmerry.co.uk/Property/HHD110768)



Property Ref:
HHD110768 - 0005

1. MONEY LAUNDERING REGULATIONS Intending purchasers will be asked to produce identification documentation at a later stage and we would ask for your co-operation in order that there is no delay in agreeing the sale. 2. These particulars do not constitute part or all of an offer or contract. 3. The measurements indicated are supplied for guidance only and as such must be considered incorrect. Potential buyers are advised to recheck measurements before committing to any expense. 4. We have not tested any apparatus, equipment, fixtures or services and it is in the buyers interest to check the working condition of any appliances. 5. Where an EPC, or a Home Report (Scotland only) is held for this property, it is available for inspection at the branch by appointment. If you require a printed version of a Home Report, you will need to pay a reasonable production charge reflecting printing and other costs. 6. We are not able to offer an opinion either written or verbal on the content of these reports and this must be obtained from your legal representative. 7. Whilst we take care in preparing these reports, a buyer should ensure that his/her legal representative confirms as soon as possible all matters relating to title including the extent and boundaries of the property and other important matters before exchange of contracts.

Brown & Merry is a trading name of Sequence (UK) Limited which is registered in England and Wales under company number 4268443, Registered Office is Cumbria House, 16-20 Hockliffe Street, Leighton Buzzard, Bedfordshire, LU7 1GN. VAT Registration Number is 500 2481 05.


brown & merry



01442 232400



HemelHempstead@brownandmerry.co.uk



57 Marlowes, HEMEL HEMPSTEAD,
Hertfordshire, HP1 1LE



[brownandmerry.co.uk](https://www.brownandmerry.co.uk)