



MANNINGTREE PARK

COUNTRY LIVING AT ITS FINEST



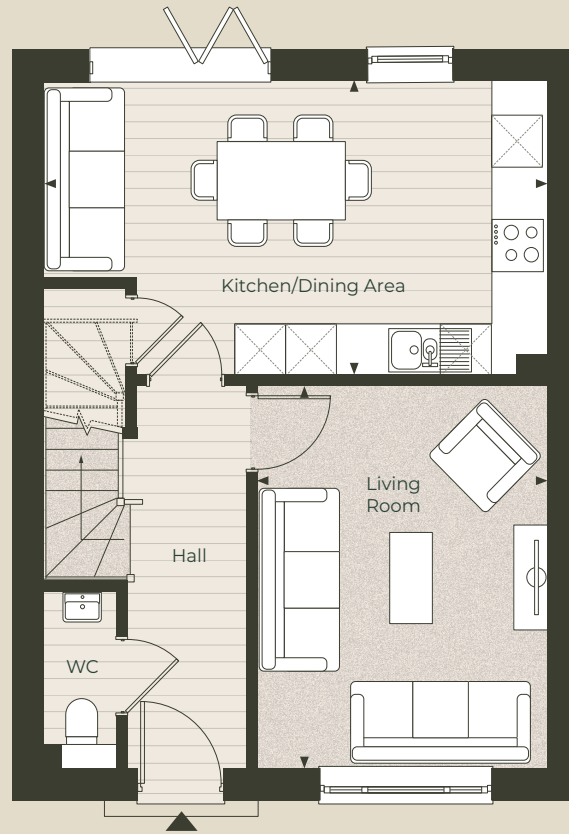
THREE BEDROOM HOME

The Parker

Plots: 8, 10, 11, 14, 15 & 428

Gross Internal Area: 1,004.5 sq ft (93.34 sq m)

(H) = Plot is handed



Ground floor

Kitchen / Dining area

5.90m x 3.40m | 19'4" x 11'11"

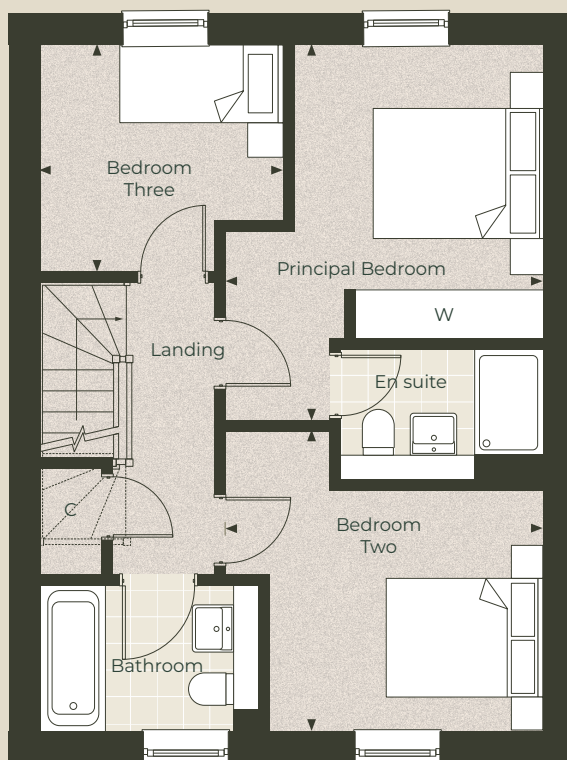
Living room

4.40m x 3.40m | 14'6" x 11'2"

Key

C – Cupboard W – Built in wardrobe ▲ – Front entrance ◀▶ – Depicts where measurements have been taken from
WC – Cloakroom

Individual plots vary in size, please ask the Sales Consultant for details.



First floor

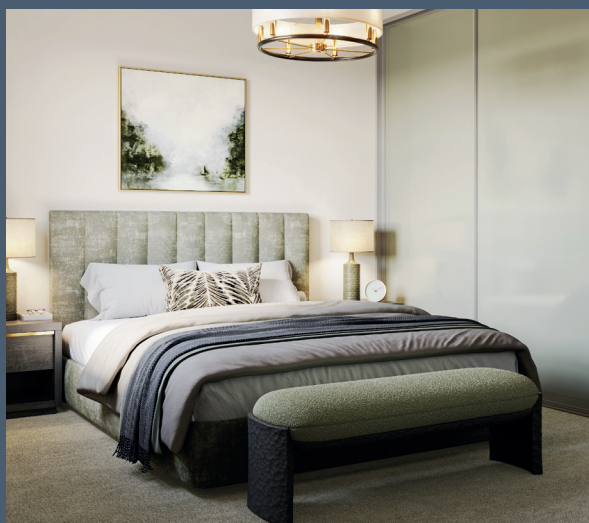
Principal bedroom	3.76m x 3.40m 12'4" x 11'2"
Bedroom two	3.73m x 3.47m 12'3" x 11'5"
Bedroom three	2.86m x 2.62m 9'5" x 8'7"

Computer generated images are indicative only. Floor plans shown are indicative only. To increase legibility these plans have been sized to fit the page and as a result may be of a different scale to others within this document. Location of windows, doors, wardrobes, kitchen units, appliance spaces and bathroom fittings may differ. All measurements may vary within a tolerance of 5%. The dimensions are not intended to be used for carpet sizes, appliance sizes or items of furniture.

The Parker

A Victorian Home with Elegant Sidelights

The Parker is a charming three bedroom Victorian-style house, featuring ground floor principal windows with sidelights that enhance its façade with elegance and character. The design captures the essence of Victorian architecture with its intricate detailing and harmonious proportions. Inside, the home offers spacious rooms, detailed woodwork, and large windows that flood the interiors with natural light. The Parker blends historical charm with modern comfort.



Honouring John Henry Parker

A Guardian of Architectural Heritage

This house is named after John Henry Parker (1806–1884), a notable British archaeologist, writer, and publisher who significantly contributed to the study and preservation of Gothic architecture. His works, including “A Glossary of Terms Used in Grecian, Roman, Italian, and Gothic Architecture,” were instrumental in promoting the appreciation of medieval architecture. The Parker house type reminds us of the importance of architectural heritage and education.

Contact us

01206 598 305

WWW.CITYANDCOUNTRY.CO.UK/MANNINGTREE-PARK

CITY & COUNTRY

Computer generated images are indicative only and can be subject to change. Images are indicative only. Layouts provide approximate measurements only. Dimensions, which are taken from the indicated points of measurement, are for guidance only and are not intended to be used for carpet sizes, appliance space or items of furniture. House areas are provided as gross internal areas and may vary. Bathroom and kitchen layouts are indicative only and are subject to change. House layout sizes may vary slightly from one another depending on the floor level – please refer to the price list or the Sales Team for more details. The information contained within this document does not constitute part of any offer, contract or warranty. Whilst the plans have been prepared with all due care for the convenience of the intending purchaser, the information contained herein is a preliminary guide only. September 2025.