



# MANNINGTREE PARK

COUNTRY LIVING AT ITS FINEST



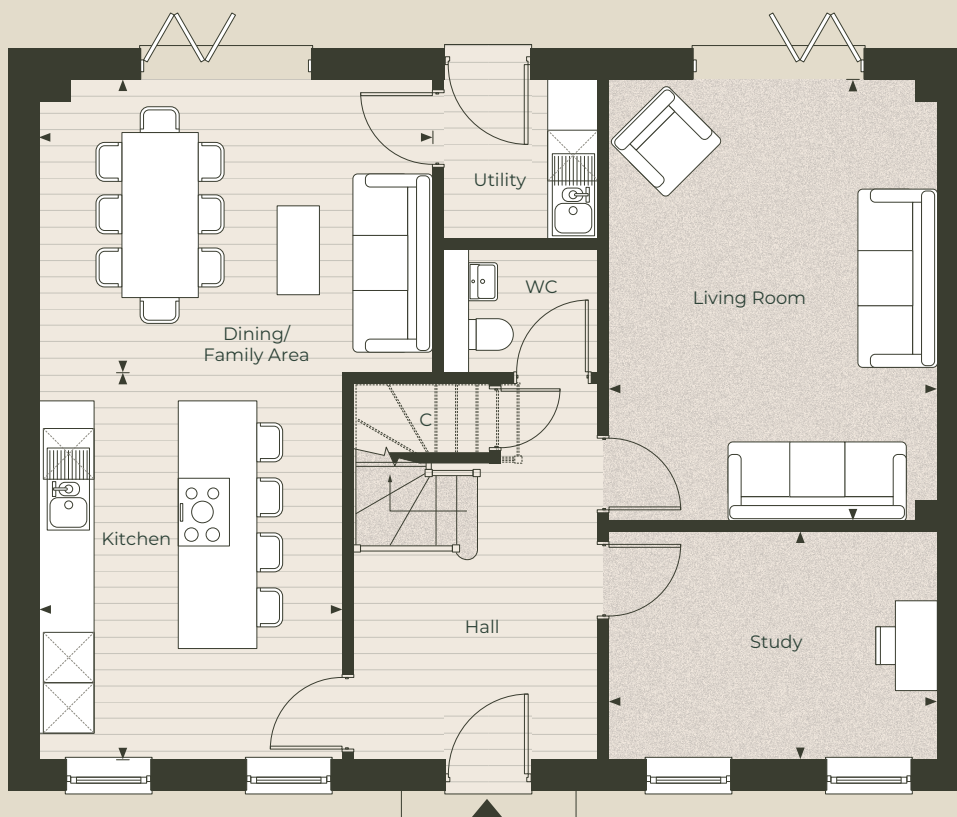
FIVE BEDROOM HOME

## The Vernon

Plot 4

Gross Internal Area: 1,835.69 sq ft (170.54 sq m)

(H) = Plot is handed



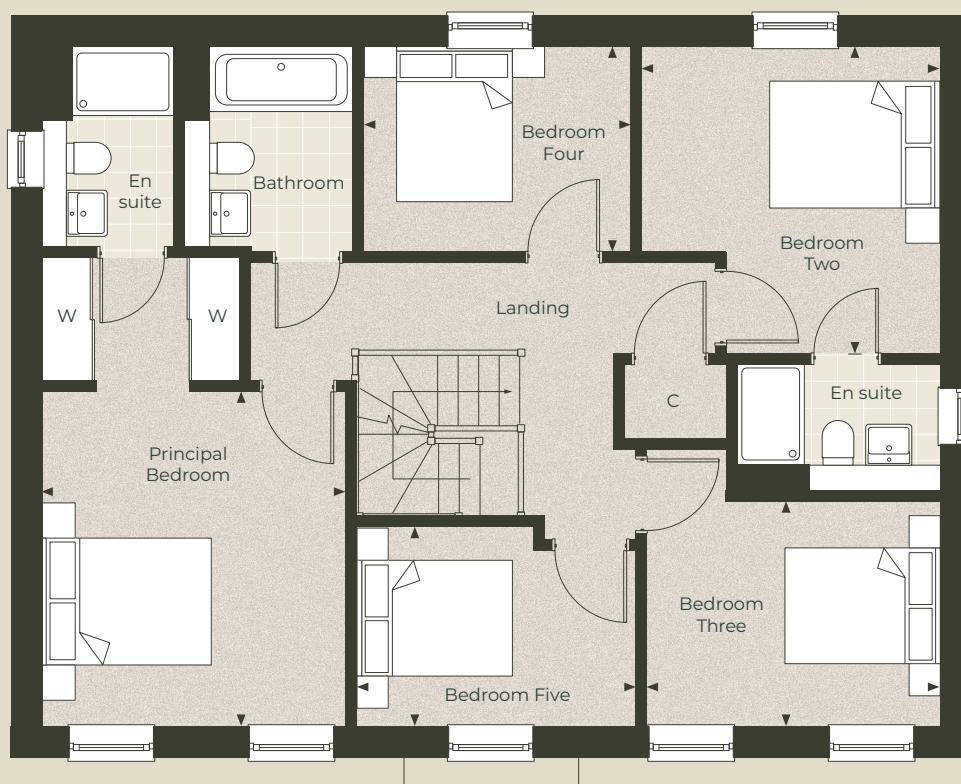
## Ground floor

Kitchen	4.57m x 3.61m   15'0" x 11'10"
Dining / Family area	4.66m x 3.47m   15'3" x 11'4"
Living room	5.23m x 3.89m   17'2" x 12'9"
Study	3.89m x 2.68m   12'9" x 8'10"

### Key

C – Cupboard W – Built in wardrobe ▲ – Front entrance ◀▶ – Depicts where measurements have been taken from  
WC – Cloakroom





## First floor

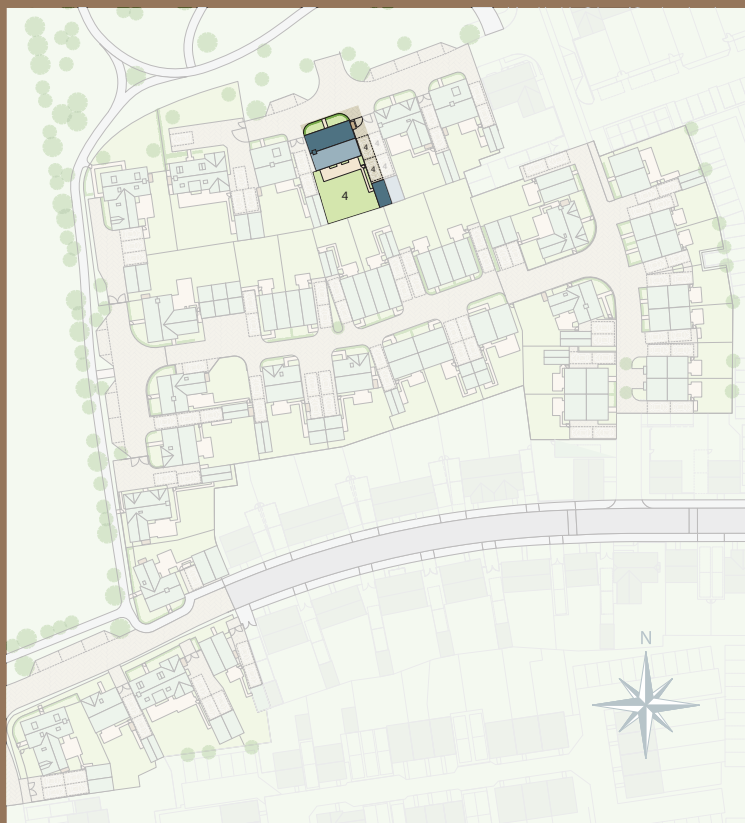
Principal bedroom	3.97m x 3.61m   13'0" x 11'10"
Bedroom two	3.61m x 3.52m   11'10" x 11'7"
Bedroom three	3.46m x 2.68m   11'4" x 8'10"
Bedroom four	3.17m x 2.41m   10'5" x 7'11"
Bedroom five	3.15m x 2.39m   10'4" x 7'10"

Computer generated images are indicative only. Floor plans shown are indicative only. To increase legibility these plans have been sized to fit the page and as a result may be of a different scale to others within this document. Location of windows, doors, wardrobes, kitchen units, appliance spaces and bathroom fittings may differ. All measurements may vary within a tolerance of 5%. The dimensions are not intended to be used for carpet sizes, appliance sizes or items of furniture.

# The Vernon

A Victorian Home with Ornate Detailing and Spacious Interiors

The Vernon is a charming five bedroom Victorian neoclassical home, showcasing a finely moulded cornice and an elegantly crafted doorcase. The design reflects the ornate detailing characteristic of the Victorian era. Inside, the home features generously proportioned rooms. Large windows ensure the interiors are bright and airy, providing a comfortable and stylish living environment.



## Simon Vernon-Harcourt

A Leader in Architectural Excellence

The Vernon is named in honour of Simon Vernon-Harcourt, the Design & Planning Director at City & Country. His dedication to taking inspiration from the best of traditional architecture and integrating this with modern design principles has been instrumental in shaping the company's warm and elegant portfolio of homes. This house stands as a testament to his vision and commitment to learn lessons from the best of traditional architecture to reflect its scale, materials and proportions.

Contact us

01206 598 305

[WWW.CITYANDCOUNTRY.CO.UK/MANNINGTREE-PARK](http://WWW.CITYANDCOUNTRY.CO.UK/MANNINGTREE-PARK)

CITY & COUNTRY

Computer generated images are indicative only and can be subject to change. Images are indicative only. Layouts provide approximate measurements only. Dimensions, which are taken from the indicated points of measurement, are for guidance only and are not intended to be used for carpet sizes, appliance space or items of furniture. House areas are provided as gross internal areas and may vary. Bathroom and kitchen layouts are indicative only and are subject to change. House layout sizes may vary slightly from one another depending on the floor level – please refer to the price list or the Sales Team for more details. The information contained within this document does not constitute part of any offer, contract or warranty. Whilst the plans have been prepared with all due care for the convenience of the intending purchaser, the information contained herein is a preliminary guide only. September 2025.