



Elderfield Place, London SW17 6EA

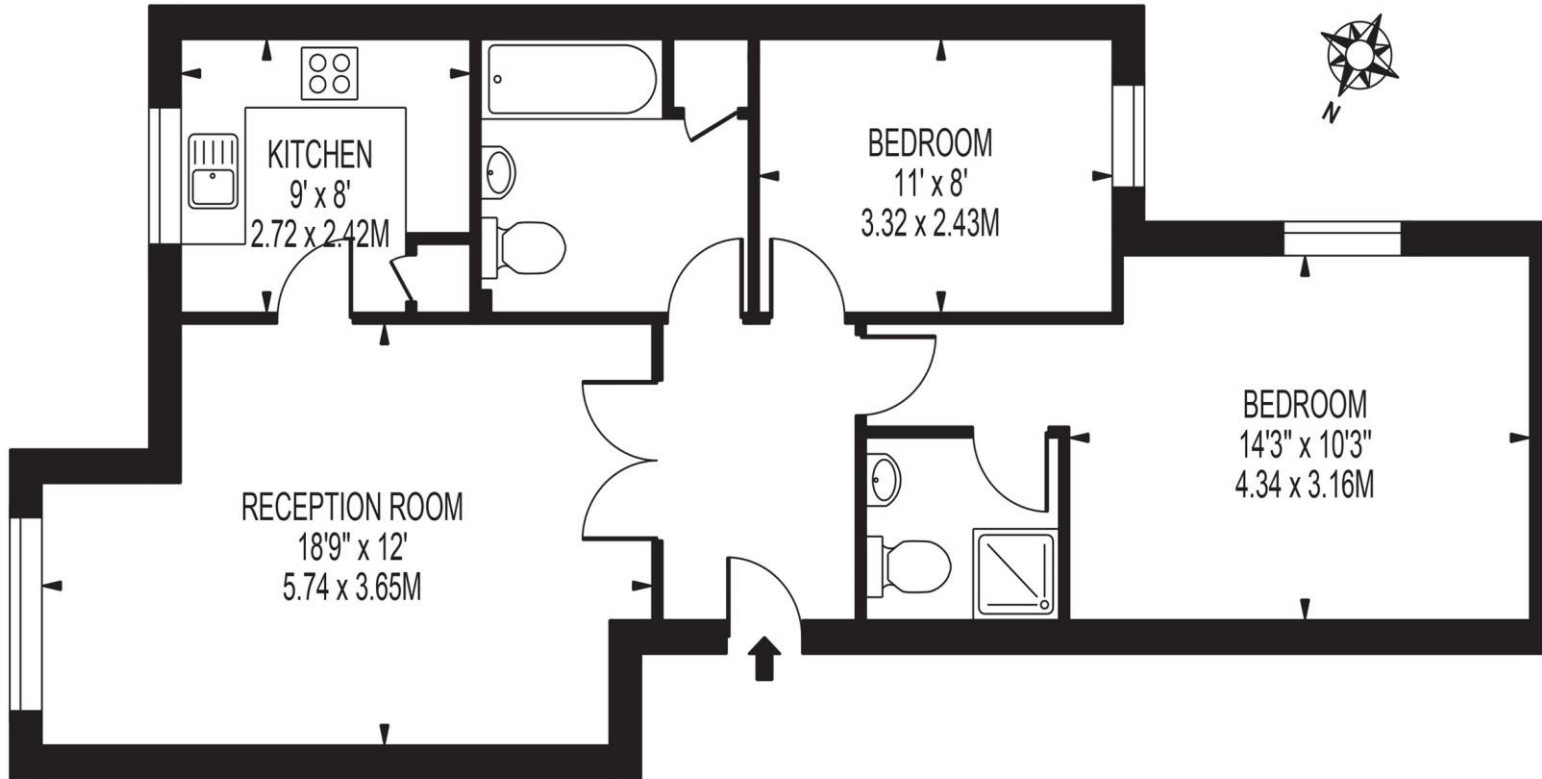
Welcome to **Elderfield Place, London**

A well-presented two double bedroom ground floor apartment with two bathrooms, set within the ever-popular Heritage Park development in Tooting Bec. This bright and well-balanced flat sits on the ground floor of a purpose-built block on the west side of the development. It boasts two bright double bedrooms, two smart bathrooms, large lounge and a generous fitted kitchen. The development itself is impeccably maintained and only a short stroll from Tooting Bec Tube and Common. The flats come with allocated parking spaces and is also double glazed throughout. This property has benefits from a Share of the Freehold. Call us to arrange your slot at the open house event.



ELDERFIELD PLACE

APPROXIMATE GROSS INTERNAL FLOOR AREA: 691 SQ FT - 64.24 SQ M



GROUND FLOOR

FOR ILLUSTRATION PURPOSES ONLY

THIS FLOOR PLAN SHOULD BE USED AS A GENERAL OUTLINE FOR GUIDANCE ONLY AND DOES NOT CONSTITUTE IN WHOLE OR IN PART AN OFFER OR CONTRACT.
ANY INTENDING PURCHASER OR LESSEE SHOULD SATISFY THEMSELVES BY INSPECTION, SEARCHES, ENQUIRIES AND FULL SURVEY AS TO THE CORRECTNESS OF EACH STATEMENT.
ANY AREAS, MEASUREMENTS OR DISTANCES QUOTED ARE APPROXIMATE AND SHOULD NOT BE USED TO VALUE A PROPERTY OR BE THE BASIS OF ANY SALE OR LET.

Welcome to

Elderfield Place, London

- 2 double bedrooms
- 2 bathrooms
- Large lounge
- Fitted Kitchen
- Parking

Tenure: Leasehold EPC Rating: C

Council Tax Band: D Service Charge: 3188.34

Ground Rent: 398.02

This is a Leasehold property with details as follows; Term of Lease 999 years from 01 Jan 1998.
Should you require further information please contact the branch. Please Note additional fees could be incurred for items such as Leasehold packs.

£500,000



Please note the marker reflects the postcode not the actual property

view this property online barnardmarcus.co.uk/Property/TTG108893



Property Ref:
TTG108893 - 0006

1. MONEY LAUNDERING REGULATIONS Intending purchasers will be asked to produce identification documentation at a later stage and we would ask for your co-operation in order that there is no delay in agreeing the sale. 2. These particulars do not constitute part or all of an offer or contract. 3. The measurements indicated are supplied for guidance only and as such must be considered incorrect. Potential buyers are advised to recheck measurements before committing to any expense. 4. We have not tested any apparatus, equipment, fixtures or services and it is in the buyers interest to check the working condition of any appliances. 5. Where an EPC, or a Home Report (Scotland only) is held for this property, it is available for inspection at the branch by appointment. If you require a printed version of a Home Report, you will need to pay a reasonable production charge reflecting printing and other costs. 6. We are not able to offer an opinion either written or verbal on the content of these reports and this must be obtained from your legal representative. 7. Whilst we take care in preparing these reports, a buyer should ensure that his/her legal representative confirms as soon as possible all matters relating to title including the extent and boundaries of the property and other important matters before exchange of contracts.

Barnard Marcus is a trading name of Sequence (UK) Limited which is registered in England and Wales under company number 4268443, Registered Office is Cumbria House, 16-20 Hockliffe Street, Leighton Buzzard, Bedfordshire, LU7 1GN. VAT Registration Number is 500 2481 05.



barnard marcus



020 8682 1161



Tooting@barnardmarcus.co.uk



248 Upper Tooting Road, Tooting, LONDON,
SW17 7EX



barnardmarcus.co.uk