



**Sovereign Apartments 328 High Street, Sutton SM1 1AP**



**welcome to**  
**Sovereign Apartments 328 High Street, Sutton**

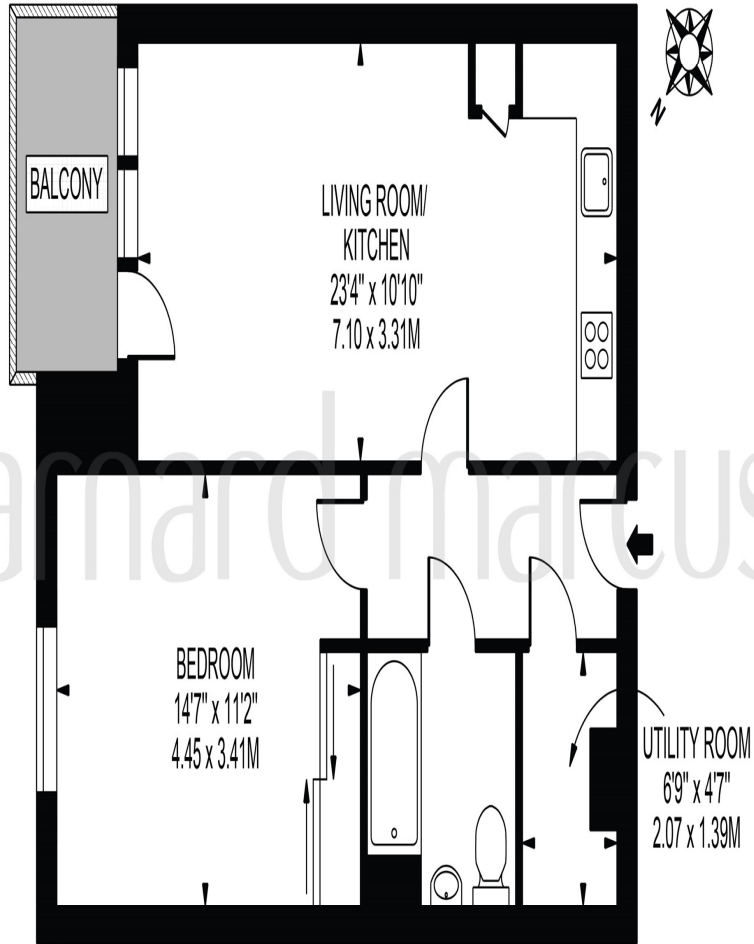
A one bedroom luxury apartment, with a private balcony and situated in a convenient location being close to various amenities and transport links.





# SOVEREIGN APARTMENTS

APPROXIMATE GROSS INTERNAL FLOOR AREA: 564 SQ FT - 52.36 SQ M



FIRST FLOOR

FOR ILLUSTRATION PURPOSES ONLY

THIS FLOOR PLAN SHOULD BE USED AS A GENERAL OUTLINE FOR GUIDANCE ONLY AND DOES NOT CONSTITUTE IN WHOLE OR IN PART AN OFFER OR CONTRACT.  
ANY INTENDING PURCHASER OR LESSEE SHOULD SATISFY THEMSELVES BY INSPECTION, SEARCHES, ENQUIRIES AND FULL SURVEY AS TO THE CORRECTNESS OF EACH STATEMENT.  
ANY AREAS, MEASUREMENTS OR DISTANCES QUOTED ARE APPROXIMATE AND SHOULD NOT BE USED TO VALUE A PROPERTY OR BE THE BASIS OF ANY SALE OR LET.



welcome to

## Sovereign Apartments 328 High Street, Sutton

- One double bedroom
- High specification throughout
- Private balcony
- Ideally situated, being on the doorstep to Sutton town centre & high street
- Modern bathroom

Tenure: Leasehold EPC Rating: B

This is a Leasehold property. We are awaiting further details about the Term of the lease. For further information please contact the branch. Please note additional fees could be incurred for items such as Leasehold packs.

offers in excess of

**£275,000**



Please note the marker reflects the postcode not the actual property

view this property online [barnardmarcus.co.uk/Property/SUT109581](https://barnardmarcus.co.uk/Property/SUT109581)



Property Ref:  
SUT109581 - 0012

1. MONEY LAUNDERING REGULATIONS Intending purchasers will be asked to produce identification documentation at a later stage and we would ask for your co-operation in order that there is no delay in agreeing the sale. 2. These particulars do not constitute part or all of an offer or contract. 3. The measurements indicated are supplied for guidance only and as such must be considered incorrect. Potential buyers are advised to recheck measurements before committing to any expense. 4. We have not tested any apparatus, equipment, fixtures or services and it is in the buyers interest to check the working condition of any appliances. 5. Where an EPC, or a Home Report (Scotland only) is held for this property, it is available for inspection at the branch by appointment. If you require a printed version of a Home Report, you will need to pay a reasonable production charge reflecting printing and other costs. 6. We are not able to offer an opinion either written or verbal on the content of these reports and this must be obtained from your legal representative. 7. Whilst we take care in preparing these reports, a buyer should ensure that his/her legal representative confirms as soon as possible all matters relating to title including the extent and boundaries of the property and other important matters before exchange of contracts.



barnard marcus



**020 8643 8245**



[Sutton@barnardmarcus.co.uk](mailto:Sutton@barnardmarcus.co.uk)



9 Station Parade, SUTTON, Surrey, SM2 5AD



[barnardmarcus.co.uk](https://barnardmarcus.co.uk)