



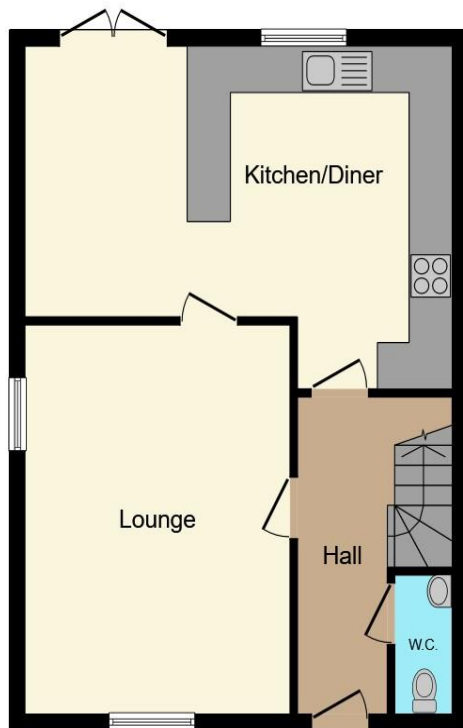
Arbour Lane, Chelmsford CM1 7RL

welcome to

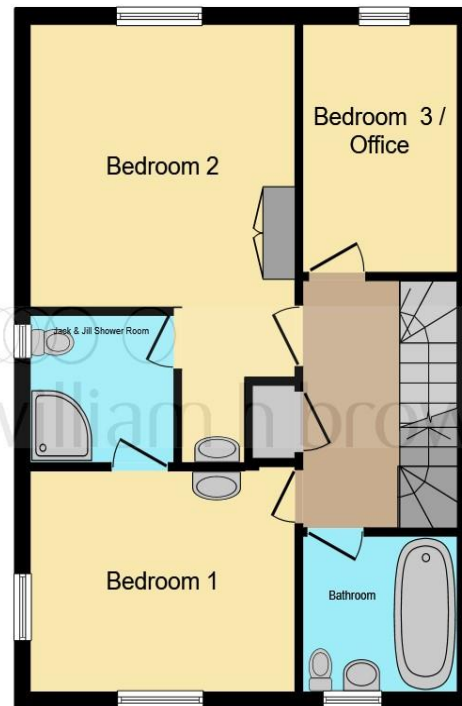
Arbour Lane, Chelmsford

An imposing FAMILY HOME situated in a popular residential location approximately 1 mile from Chelmsford RAILWAY STATION. The property is situated in a non-estate position and benefits from a large kitchen/diner, four DOUBLE bedrooms, Jack and Jill en suite, off-road parking and garage.

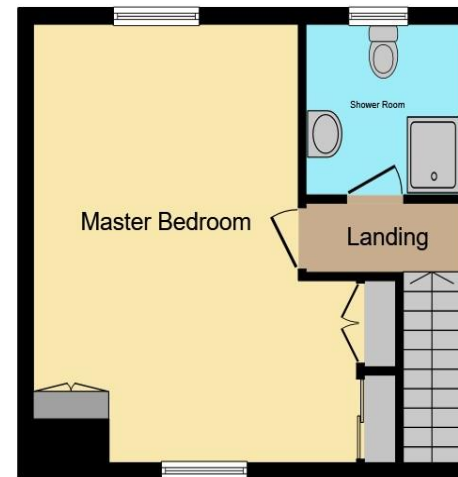




Ground Floor



First Floor



Second Floor

Ground Floor

Entrance Hall

Cloakroom

Lounge

18' 5" x 12' (5.61m x 3.66m)

Kitchen / Diner

19' 5" x 14' 6" (5.92m x 4.42m)

First Floor

Bedroom One

12' 1" x 10' 9" (3.68m x 3.28m)

Jack & Jill Shower Room

6' 6" x 6' 3" (1.98m x 1.91m)

Bedroom Two

15' 8" x 12' 2" (4.78m x 3.71m)

Bedroom Three / Office

10' 6" x 6' 10" (3.20m x 2.08m)

Bathroom

7' 1" x 6' 7" (2.16m x 2.01m)

Second Floor

Master Bedroom

15' 6" x 14' 2" (4.72m x 4.32m)

Shower Room

8' 6" x 8' 6" (2.59m x 2.59m)

Exterior

Front & Rear Garden

Garage

Summerhouse

This floor plan is for illustrative purposes only. It is not drawn to scale. Any measurements, floor areas (including any total floor area), openings and orientation are approximate. No details are guaranteed, they cannot be relied upon for any purpose and they do not form part of any agreement. No liability is taken for any error, omission or misstatement. A party must rely upon its own inspection(s). Powered by www.focalagent.com

welcome to

Arbour Lane, Chelmsford

- No Chain
- Garage & Parking
- Popular Location
- Close To City Centre
- Large Rooms

Tenure: Freehold EPC Rating: C

offers over

£575,000



Please note the marker reflects the postcode not the actual property

view this property online williamhbrown.co.uk/Property/CHE114510



Property Ref:
CHE114510 - 0008

1. MONEY LAUNDERING REGULATIONS Intending purchasers will be asked to produce identification documentation at a later stage and we would ask for your co-operation in order that there is no delay in agreeing the sale. 2. These particulars do not constitute part or all of an offer or contract. 3. The measurements indicated are supplied for guidance only and as such must be considered incorrect. Potential buyers are advised to recheck measurements before committing to any expense. 4. We have not tested any apparatus, equipment, fixtures or services and it is in the buyers interest to check the working condition of any appliances. 5. Where an EPC, or a Home Report (Scotland only) is held for this property, it is available for inspection at the branch by appointment. If you require a printed version of a Home Report, you will need to pay a reasonable production charge reflecting printing and other costs. 6. We are not able to offer an opinion either written or verbal on the content of these reports and this must be obtained from your legal representative. 7. Whilst we take care in preparing these reports, a buyer should ensure that his/her legal representative confirms as soon as possible all matters relating to title including the extent and boundaries of the property and other important matters before exchange of contracts.

William H Brown is a trading name of Sequence (UK) Limited which is registered in England and Wales under company number 4268443, Registered Office is Cumbria House, 16-20 Hockliffe Street, Leighton Buzzard, Bedfordshire, LU7 1GN. VAT Registration Number is 500 2481 05.



william h brown



01245 262266



Chelmsford@williamhbrown.co.uk



12 Duke Street, CHELMSFORD, Essex, CM1 1HL



williamhbrown.co.uk