



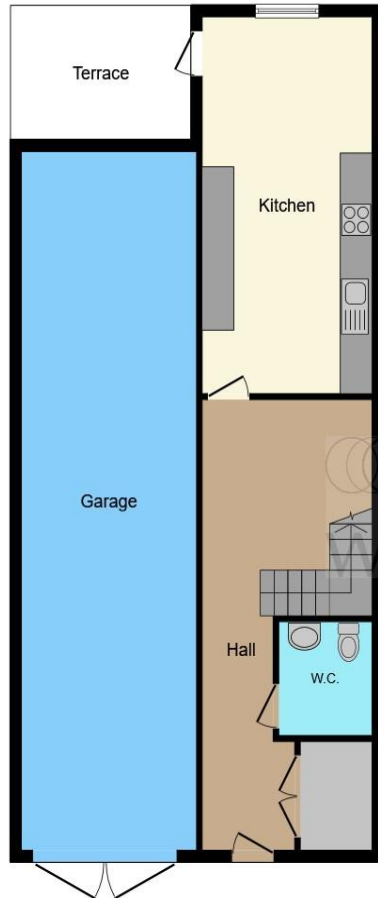
Wharf Road, Chelmsford CM2 6NR

welcome to

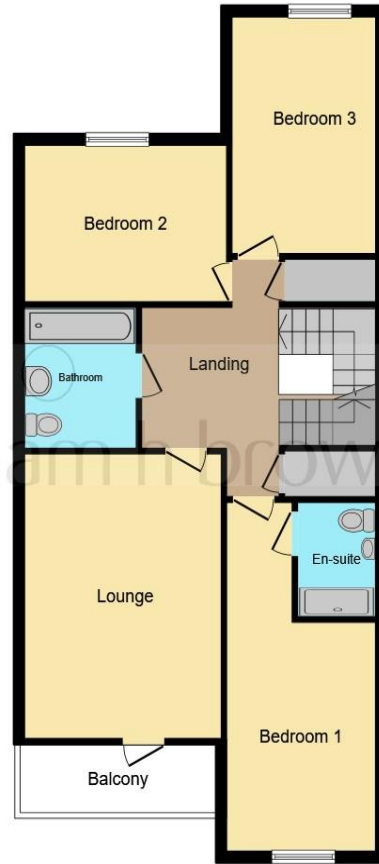
Wharf Road, Chelmsford

William H Brown are delighted to offer this modern, impressive and immaculately presented family home set over three floors. With large rooms with multiple balcony's and offered with NO CHAIN early viewings are recommended

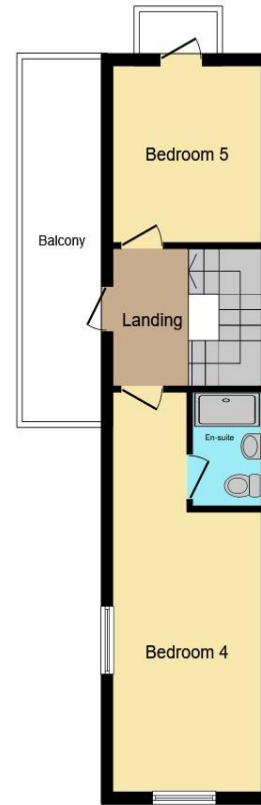




Ground Floor



First Floor



Second Floor

Ground Floor

Cloakroom

Kitchen / Breakfast Room

23' x 9' (7.01m x 2.74m)

Outside Area

11' 10" x 9' 10" (3.61m x 3.00m)

First Floor

Lounge

15' 10" x 11' 10" (4.83m x 3.61m)

Bedroom One

12' 1" x 9' (3.68m x 2.74m)

En Suite

6' 10" x 4' 1" (2.08m x 1.24m)

Bedroom Two

11' 10" x 9' 10" (3.61m x 3.00m)

Bedroom Three

16' x 9' (4.88m x 2.74m)

Bathroom

7' x 6' 10" (2.13m x 2.08m)

Top Floor

Bedroom Four

15' 1" x 9' (4.60m x 2.74m)

En Suite

6' 1" x 4' 1" (1.85m x 1.24m)

-- --

This floor plan is for illustrative purposes only. It is not drawn to scale. Any measurements, floor areas (including any total floor area), openings and orientation are approximate. No details are guaranteed, they cannot be relied upon for any purpose and they do not form part of any agreement. No liability is taken for any error, omission or misstatement. A party must rely upon its own inspection(s). Powered by www.focalagent.com

welcome to

Wharf Road, Chelmsford

- Five Bedroom
- Modern Family Home
- Garage & Parking
- No Chain
- A Garden Terrace & Multiple Balcony's

Tenure: Freehold EPC Rating: B

offers in the region of

£650,000



Please note the marker reflects the postcode not the actual property

view this property online williamhbrown.co.uk/Property/CHE114586



Property Ref:
CHE114586 - 0004

1. MONEY LAUNDERING REGULATIONS Intending purchasers will be asked to produce identification documentation at a later stage and we would ask for your co-operation in order that there is no delay in agreeing the sale. 2. These particulars do not constitute part or all of an offer or contract. 3. The measurements indicated are supplied for guidance only and as such must be considered incorrect. Potential buyers are advised to recheck measurements before committing to any expense. 4. We have not tested any apparatus, equipment, fixtures or services and it is in the buyers interest to check the working condition of any appliances. 5. Where an EPC, or a Home Report (Scotland only) is held for this property, it is available for inspection at the branch by appointment. If you require a printed version of a Home Report, you will need to pay a reasonable production charge reflecting printing and other costs. 6. We are not able to offer an opinion either written or verbal on the content of these reports and this must be obtained from your legal representative. 7. Whilst we take care in preparing these reports, a buyer should ensure that his/her legal representative confirms as soon as possible all matters relating to title including the extent and boundaries of the property and other important matters before exchange of contracts.



william h brown



01245 262266



Chelmsford@williamhbrown.co.uk



12 Duke Street, CHELMSFORD, Essex, CM1 1HL



williamhbrown.co.uk