

**exclusive**  
*selection of*

**28**

**1 & 2 bedroom  
apartments**



BRIDGE  
HOUSE  
WEYBRIDGE

# A great place to call home

Welcome to Bridge House, an exclusive development of 28 contemporary apartments situated in the heart of Weybridge, a fashionable, bustling Surrey Village renowned for excellent shopping, superb places to dine, excellent connectivity and just a stone's throw from the picturesque towpaths of the river Thames.





***A striking collection of brand-new apartments and duplexes, these light and airy homes benefit from a high specification and finish associated with Mazbro Developments renowned attention to detail.***

This striking new town centre development has been designed and constructed with our customers' long-term enjoyment in mind. Sitting within the High Street itself, Bridge House avoids the necessity to drive in many scenarios and day to day shopping, or even the weekly shop itself can be a car free situation with Waitrose being directly opposite and Morrisons within 100 metres.

Each of these apartment's interior spaces have been expertly designed by Mazbro with emphasis on accommodation flow and high quality fixtures and fittings, to ensure each of these stunning homes is unique and of the highest specification.







# The best of both worlds

Weybridge offers the best of both worlds – excellent connectivity combined with picturesque surroundings and extensive leisure and recreational facilities.

Weybridge station offers direct access to London Waterloo in around 30 minutes, whilst the A3 is under 4.5 miles with the London Orbital, the M25, being within 6 miles. Weybridge also offers beautiful riverside walks along its well-kept towpaths, and the superb high street offers numerous independent boutique shops, a vast array of quality restaurants and places to relax and unwind.



In addition to the Thames, Weybridge's rivers include the Wey and Chertsey Meads and the village's history dates back to Doomsday Book, having been home to Henry VIII's infamous "Oatlands Palace", now the Oatlands Park Hotel.

Located less than 30 miles from central London, Weybridge benefits from immediate access to nearby towns of Cobham, Esher and Guildford.



## Weybridge Station →

- Chertsey 7mins
- Esher 9mins
- Woking 10mins
- Surbiton 13mins
- Farnborough (Main) 21mins
- Wimbledon 21mins
- Clapham Junction 29mins
- Vauxhall 34mins
- London Waterloo 39mins
- Basingstoke 48mins
- Barnes 61mins
- Portsmouth Harbour 68mins





# Superb schooling

The area is well catered for with junior and pre-schools including Oatlands Pre-School for 2-5 year olds, Walton Oak School for 3-11 year olds and Cleves Junior School for 5-11 year olds. All of these have excellent Ofsted reports and offer well-regarded clubs and facilities. Also renowned for its excellent state and private senior schools, the area is also home to Heathside School, St George's College and Reeds to name a few.

# So much going on

Golfers are spoilt for choice with an excellent selection of high quality courses nearby including Burhill Golf Club, whilst horse racing enthusiasts can visit Esher's Sandown Park, one of horse racing's most loved and revered venues.

Local places to visit include Brooklands Museum, Mercedes Benz World, Oatlands Park and The Riverhouse Barn Everyman Cinema in nearby Walton on Thames and Weybridge Cricket and Green.



*Brooklands Museum*  
*Mercedes Benz World*  
*Oatlands Park*  
*The Riverhouse Barn Everyman Cinema*  
*Sandown Park*





# Specification

## Kitchens

- Contemporary styled kitchens with handleless design and soft close doors
- Quartz worktops with matching upstands and mirror splashback
- Integrated full height fridge/freezer
- Integrated electric oven and hob
- Integrated dishwasher
- Integrated washing machine
- Integrated extractor fan
- Feature LED under wall unit lighting
- Stainless steel sink with mixer tap



## Bathrooms

- Beautifully designed contemporary style bathrooms incorporating JTP fittings
- Wall hung WC with soft close seat
- Wall hung vanity unit with mixer tap
- Fitted bath with wall mounted thermostatic mixer and hand-held shower set to bath
- Clear glass opening bath screen and overhead shower
- Ceiling height mirror above vanity basins
- Heated towel rail
- Porcelain contemporary wall tiles and wood effect floor tiles
- Porcelain contemporary patterned tiles in niches
- Brushed black taps and fittings
- Niches with feature LED lighting

## Lighting, Electrical & Heating

- Downlighters to open living area, bedrooms, bathrooms and hallways
- Ceiling pendants to living rooms
- Concealed LED feature lighting to living rooms and bathrooms
- Shaver sockets to all bathrooms
- Slate effect sockets and switches
- USB charging points to kitchen and bedrooms
- Underfloor heating in bathrooms
- Smoke and heat detectors
- TV points in living room and bedroom
  - › Fibre optic broadband Openreach and Virgin Media

## Interior Features

- European bespoke lacquered doors with horizontal grooving and matching architraves
- Polished black door handles
- Walls painted in matt neutral finish
- Engineered wood flooring to kitchen/dining/open plan living rooms and hallways
- Carpet to all bedrooms
- Porcelain fully tiled bathrooms

## External Features

- Aluminium double glazed windows. Some flats have floor to ceiling windows
- Secure bike storage
- Communal refuse store



'Subject to changes'





# Find your perfect layout

selection of  
**28**  
1 & 2 bedroom apartments



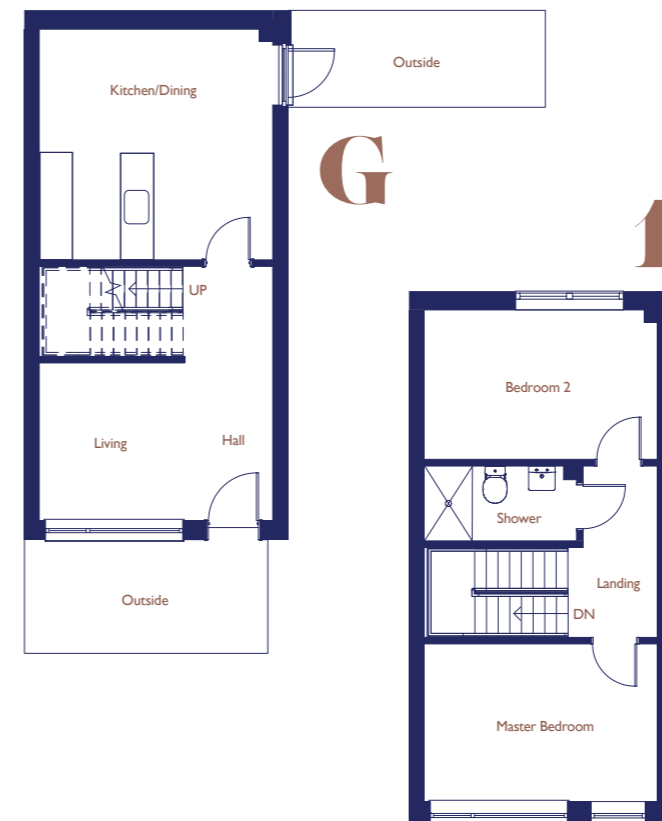
## Unit 2 MAISONETTE | 2 BED

Ground/First Floor 93.2m<sup>2</sup> | 1003ft<sup>2</sup>



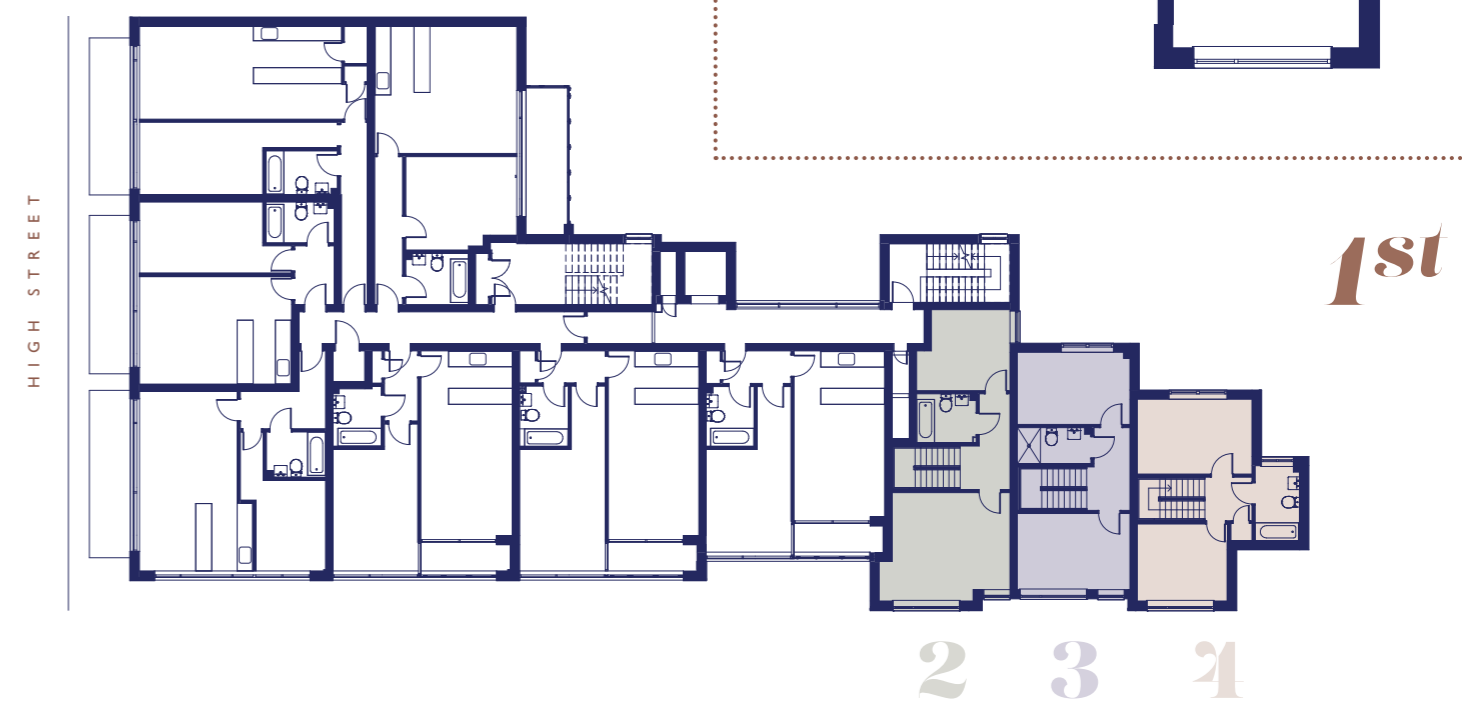
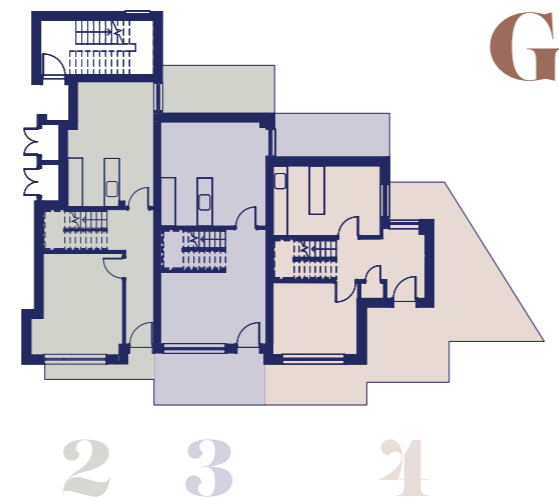
## Unit 3 MAISONETTE | 2 BED

Ground/First Floor 81.8m<sup>2</sup> | 881ft<sup>2</sup>



## Unit 4 MAISONETTE | 2 BED

Ground/First Floor 77.4m<sup>2</sup> | 833ft<sup>2</sup>



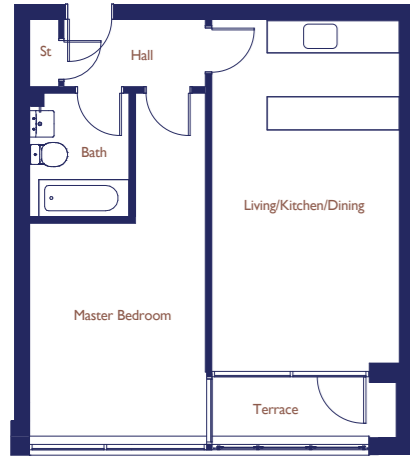
Floor plan measurements are approximate and are for illustrative purpose only and can be subject to change. While we do not doubt the floor plan accuracy and completeness, you or your advisors should conduct a careful, independent investigation of the property in respect of monetary valuation.



# Unit 1

FLAT | 1 BED

First Floor 50.5m<sup>2</sup> | 544ft<sup>2</sup>



# Unit 2

FLAT | 1 BED

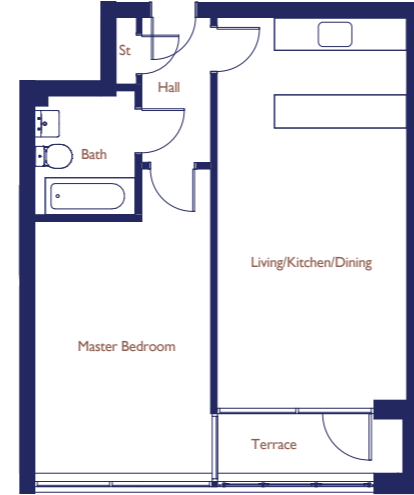
First Floor 56.1m<sup>2</sup> | 604ft<sup>2</sup>



# Unit 3

FLAT | 1 BED

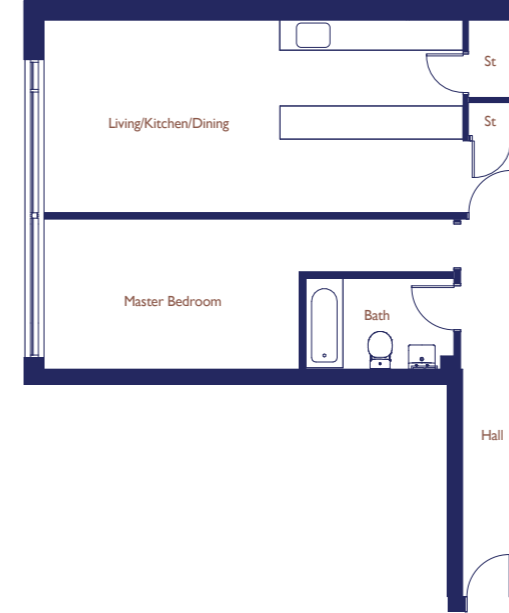
First Floor 53.7m<sup>2</sup> | 578ft<sup>2</sup>



# Unit 6

FLAT | 1 BED

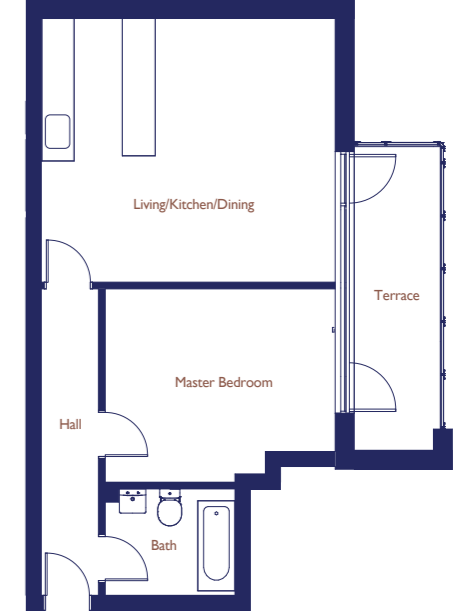
First Floor 63.2m<sup>2</sup> | 681ft<sup>2</sup>



# Unit 7

FLAT | 1 BED

First Floor 56m<sup>2</sup> | 603ft<sup>2</sup>



# Unit 4

FLAT | 1 BED

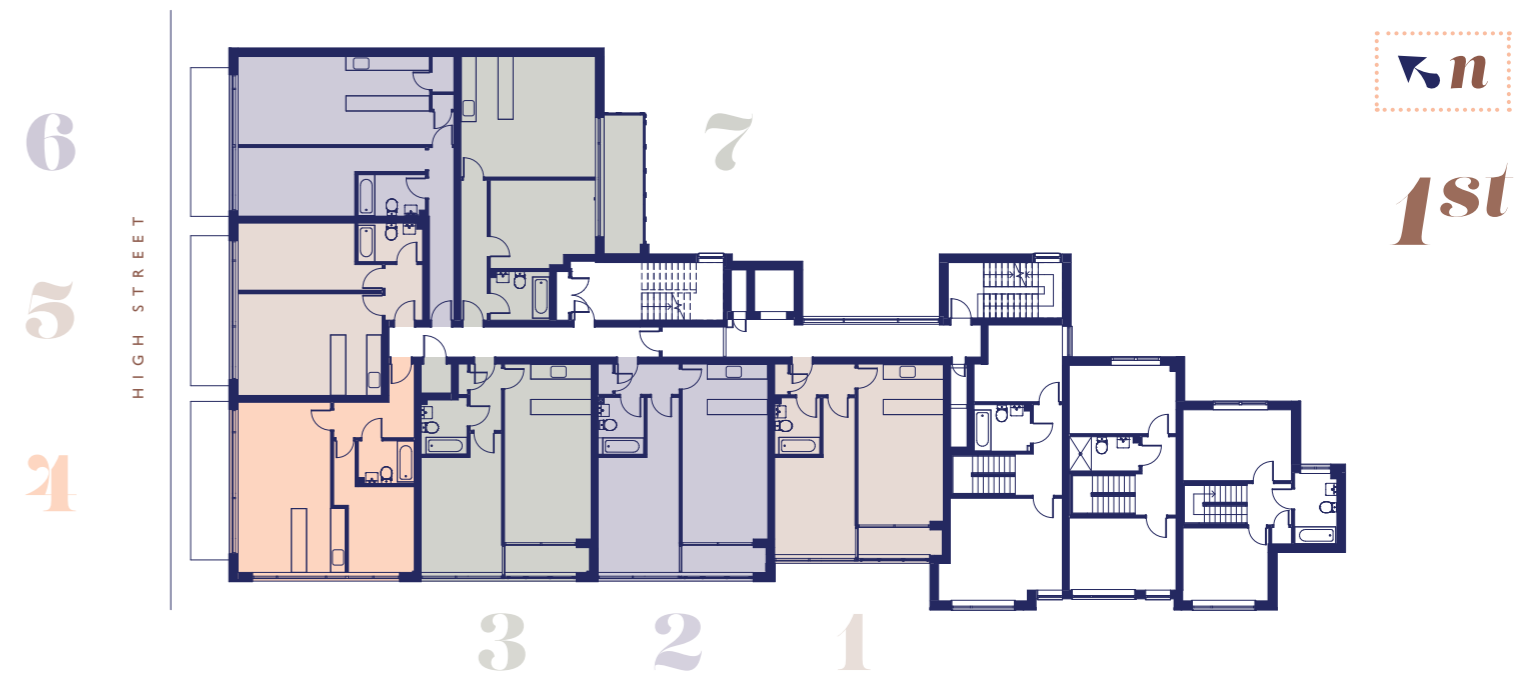
First Floor 52.9m<sup>2</sup> | 569ft<sup>2</sup>



# Unit 5

FLAT | 1 BED

First Floor 49.1m<sup>2</sup> | 529ft<sup>2</sup>



Floor plan measurements are approximate and are for illustrative purpose only and can be subject to change. While we do not doubt the floor plan accuracy and completeness, you or your advisors should conduct a careful, independent investigation of the property in respect of monetary valuation.



# Unit 8

FLAT | 1 BED

Second Floor 55.8m<sup>2</sup> | 601ft<sup>2</sup>



# Unit 9

FLAT | 1 BED

Second Floor 56.6m<sup>2</sup> | 609ft<sup>2</sup>



# Unit 10

FLAT | 1 BED

Second Floor 50.5m<sup>2</sup> | 544ft<sup>2</sup>



# Unit 14

FLAT | 1 BED

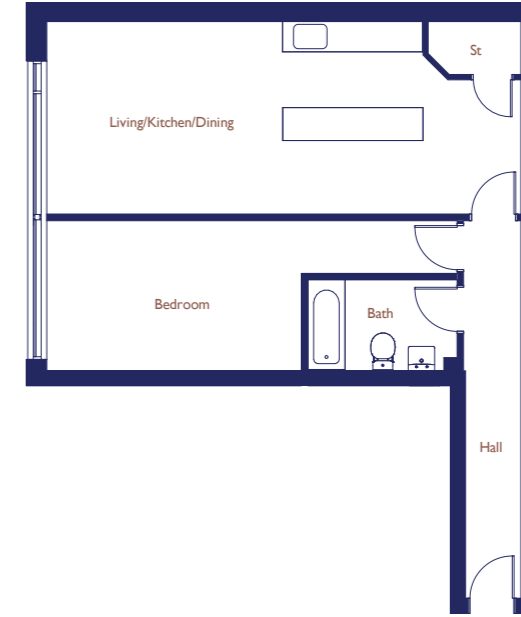
Second Floor 49.1m<sup>2</sup> | 529ft<sup>2</sup>



# Unit 15

FLAT | 1 BED

Third Floor 63.2m<sup>2</sup> | 681ft<sup>2</sup>



# Unit 16

FLAT | 1 BED

Third Floor 56m<sup>2</sup> | 603ft<sup>2</sup>



# Unit 11

FLAT | 1 BED

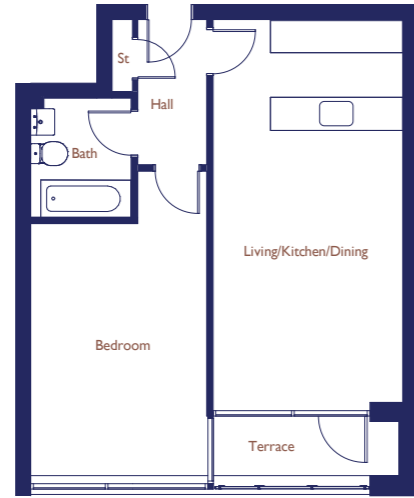
Second Floor 56.1m<sup>2</sup> | 604ft<sup>2</sup>



# Unit 12

FLAT | 1 BED

Second Floor 53.7m<sup>2</sup> | 578ft<sup>2</sup>



# Unit 13

FLAT | 1 BED

Second Floor 52.9m<sup>2</sup> | 569ft<sup>2</sup>



15

14

HIGH STREET



2nd

Floor plan measurements are approximate and are for illustrative purpose only and can be subject to change. While we do not doubt the floor plan accuracy and completeness, you or your advisors should conduct a careful, independent investigation of the property in respect of monetary valuation.







# Unit 17

DUPLEX | 1 BED

Third/Fourth Floor 67m<sup>2</sup> | 721ft<sup>2</sup>



# Unit 18

DUPLEX | 1 BED

Third/Fourth Floor 58.6m<sup>2</sup> | 631ft<sup>2</sup>



# Unit 20

DUPLEX | 2 BED

Third/Fourth Floor 94m<sup>2</sup> | 1012ft<sup>2</sup>



# Unit 21

DUPLEX | 2 BED

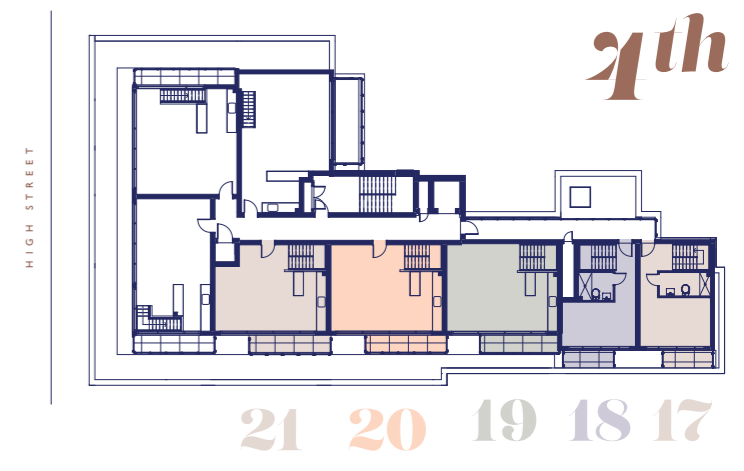
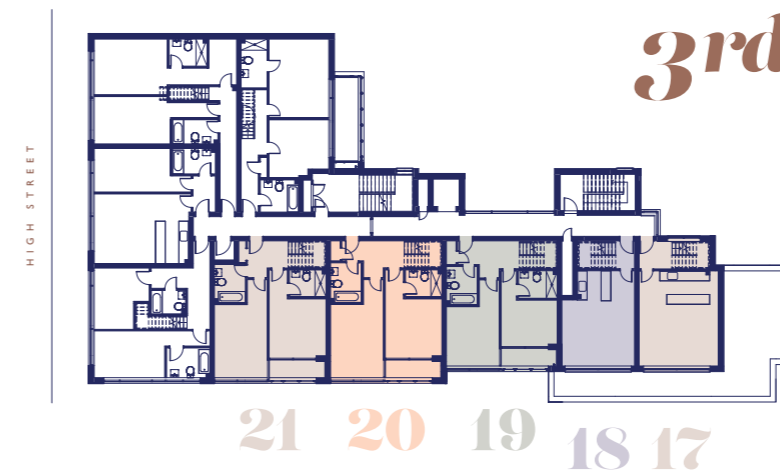
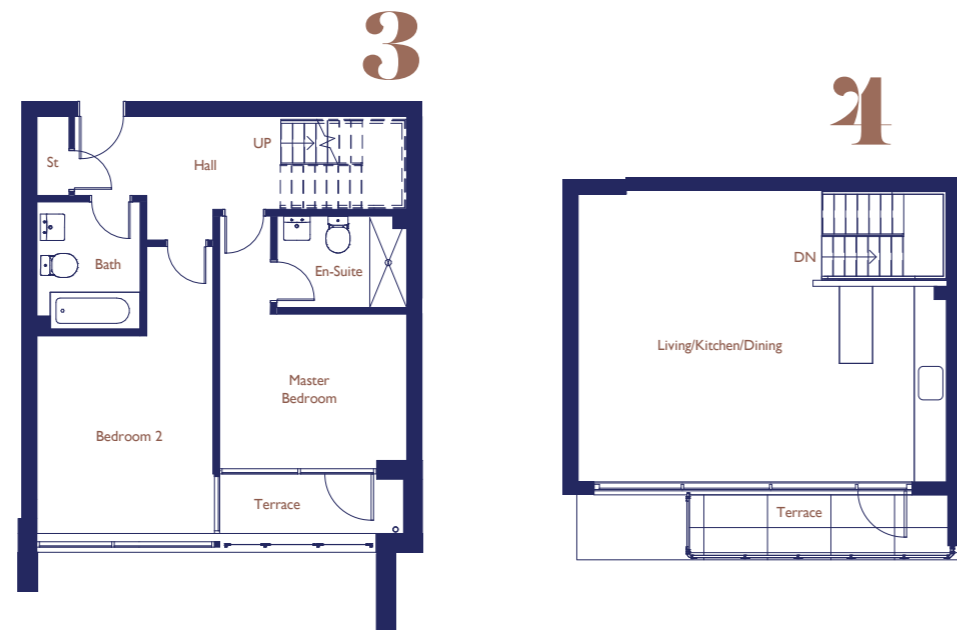
Third/Fourth Floor 90m<sup>2</sup> | 964ft<sup>2</sup>



# Unit 19

DUPLEX | 2 BED

Third/Fourth Floor 89m<sup>2</sup> | 957ft<sup>2</sup>



Floor plan measurements are approximate and are for illustrative purpose only and can be subject to change. While we do not doubt the floor plan accuracy and completeness, you or your advisors should conduct a careful, independent investigation of the property in respect of monetary valuation.

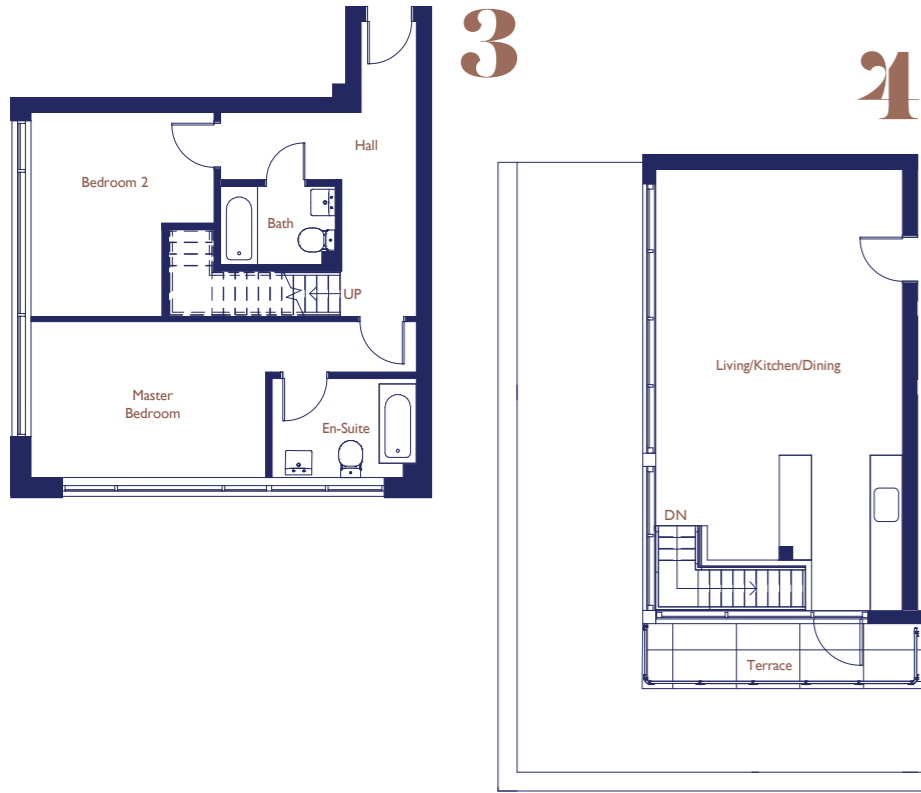




# Unit 22

DUPLEX | 2 BED

Third/Fourth Floor 90.9m<sup>2</sup> | 978ft<sup>2</sup>



# Unit 23

FLAT | 1 BED

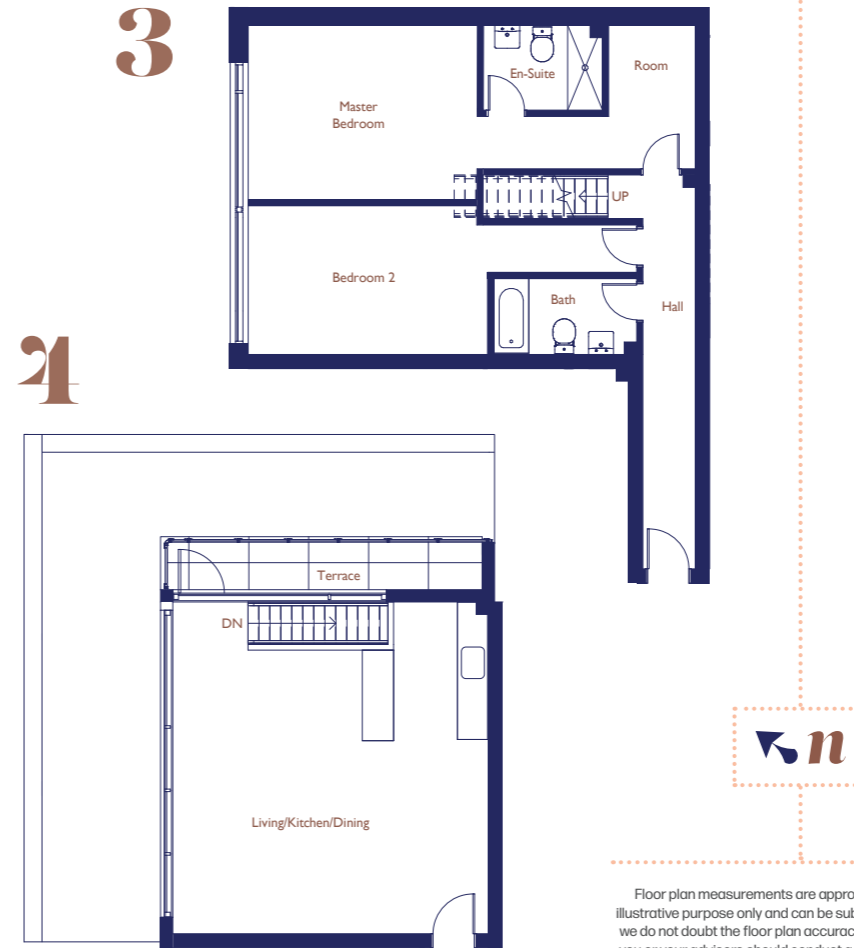
Third Floor 49.9m<sup>2</sup> | 537ft<sup>2</sup>



# Unit 24

DUPLEX | 2 BED

Third/Fourth Floor 105.7m<sup>2</sup> | 1138ft<sup>2</sup>



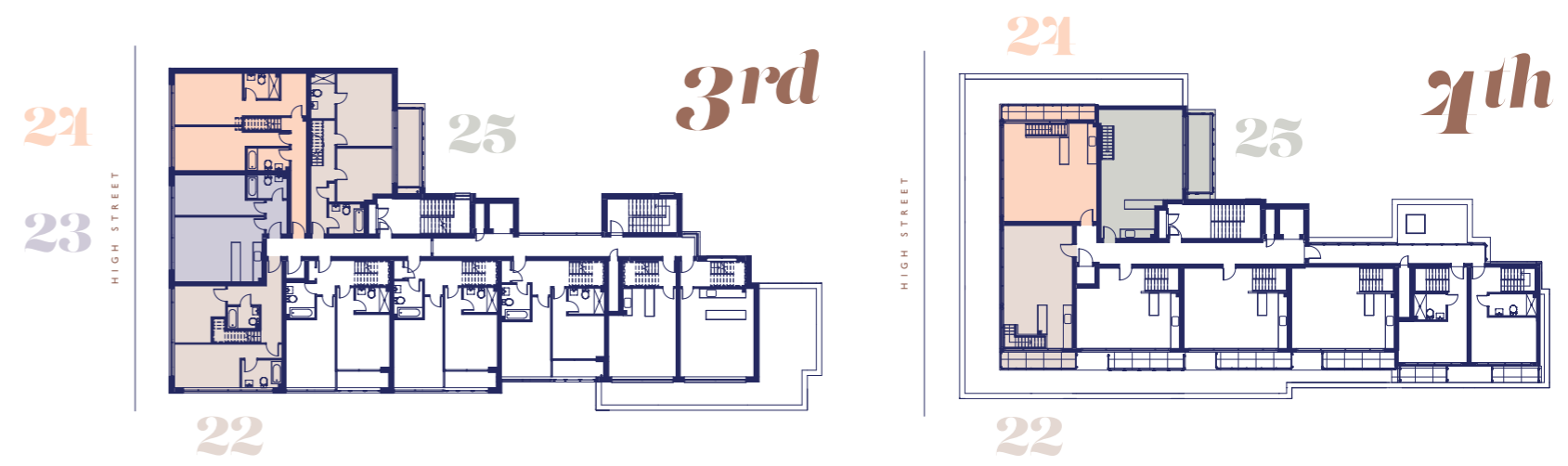
# Unit 25

DUPLEX | 2 BED

Third/Fourth Floor 99m<sup>2</sup> | 1066ft<sup>2</sup>



Floor plan measurements are approximate and are for illustrative purpose only and can be subject to change. While we do not doubt the floor plan accuracy and completeness, you or your advisors should conduct a careful, independent investigation of the property in respect of monetary valuation.







**come live**  
*in the*



**Weybridge**

**Surbiton Branch**  
5A Surbiton Crescent  
St Marks Hill, Surbiton KT6 4RB  
surbiton@barnardmarcus.co.uk  
0208 390 8181



**barnard marcus**  
land & new homes

All images are indicative CGIs and are subject to change. Specification maybe subject to change depending on stage of construction, please ask for further details. Floorplans, dimensions and configurations are included for guidance only, may be subject to revision during construction. Help To Buy is subject to availability, Terms and Conditions apply.