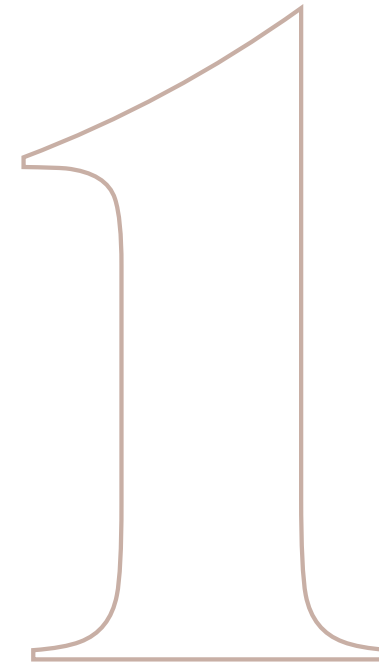


THE HARRIERS





THE HARRIERS



AMAZING DESTINATION

Where British aviation history meets contemporary design to create a unique place to live, workout and unwind.

A stylish collection of 60 one, two and three-bedroom contemporary apartments arranged across four blocks with a dedicated concierge service, gym and secure underground parking. The Harriers takes modern living to new heights.



60

EXCITING APARTMENTS IN A ROYAL BOROUGH

The Harriers is an exciting mix of 60 stylish apartments, designed and built with modern, free-flowing living in mind. Whether you're just stepping onto the property ladder, upsizing or downsizing, there's an outstanding apartment at The Harriers designed with you in mind.



MORE THAN

160

SHOPS, CAFES & RESTAURANTS
ON YOUR DOORSTEP

Bentalls

WHERE
STYLE
REIGNS

8

MILES OF REFRESHING RIVER
WALKS TO EXPLORE WITH
ENDLESS POSSIBILITIES FOR
ACTIVITY OR RELAXATION

From its lively shopping centres and arcades to quirky artisan and independent boutiques, you'll find vibrant shopping around every corner. Don't miss Kingston's daily Ancient Market for fresh fruit and veg, fish, bread, flowers and authentic street food.

Escape the hustle and bustle and get back to nature with a stroll along the riverbank then catch up with friends and neighbours over a drink while you watch the world go by.

*8 miles is the distance along the Thames path between Richmond and Hampton Court



10

MINUTES AWAY FROM
RETAIL THERAPY AND
GASTRO DELIGHTS

Whether your passion is retail therapy, the arts or the great outdoors, the Royal Borough of Kingston has it all.

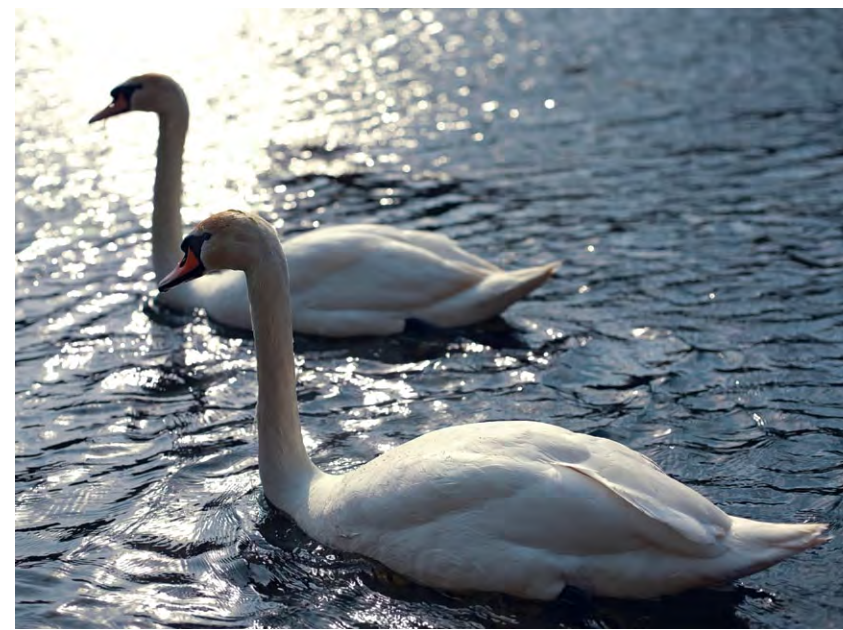
From the Rose Theatre to IMAX cinema, café culture to fine dining, artisan bakeries or delightful delis, you'll find a variety of gastro delights and entertainment in Kingston or Surbiton, and both are just 10 minutes' walk away.



2 OF LONDON'S MOST BEAUTIFUL ROYAL PARKS

Get back to nature with a stroll in Richmond Park or Bushy Park, two of London's most beautiful Royal Parks, complete with red and fallow deer. Enjoy fresh air and abundant, wide-open spaces for walking, jogging, cycling, paddleboarding or boating.

Visit the spectacular Royal Palace and gardens of Hampton Court, former home of Henry VIII. Lose yourself in its famous maze or simply soak up the historic atmosphere.



INCREDIBLY WELL
CONNECTED

Getting around will never be a chore. Equally close to both Kingston and Surbiton for picking up those everyday essentials, with London Waterloo just 18 minutes away by train from Surbiton. With its excellent transport links, there's easy access to the motorway network and Gatwick and Heathrow airports.

10

MINUTES' WALK TO
KINGSTON, SURBITON
OR THE THAMES

18

MINUTES BY TRAIN TO
CENTRAL LONDON FROM
SURBITON

29

BUS ROUTES WITHIN
AND AROUND KINGSTON

10

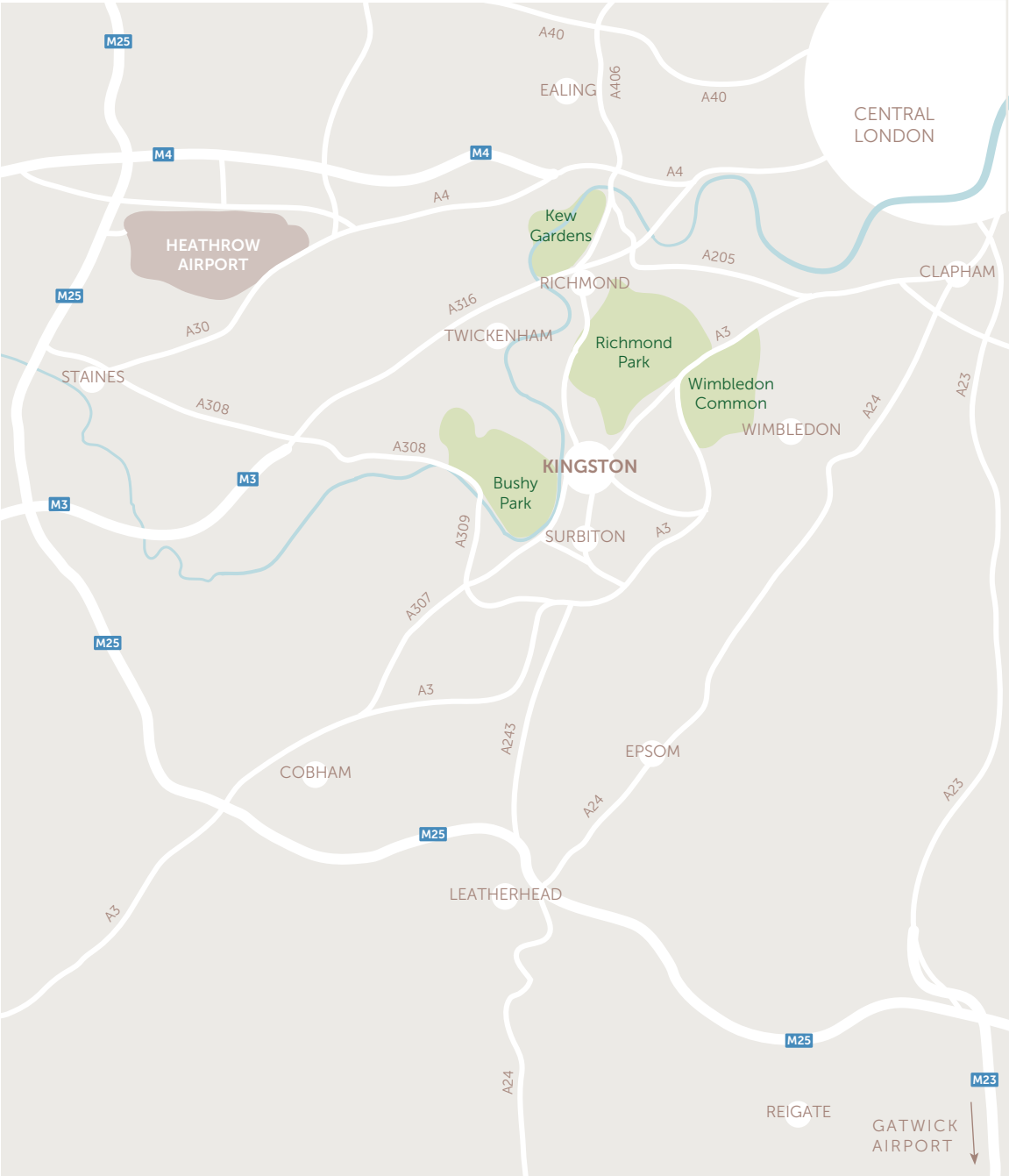
MINUTES CYCLE'
TO RICHMOND AND
BUSHY PARKS

16

MINUTES BY CAR TO
THE M25 MOTORWAY

2

INTERNATIONAL
AIRPORTS WITHIN
40 MINUTES' DRIVE



60

STYLISH APARTMENTS WITH
CONCIERGE, GYM AND PARKING

THE HARRIERS

Contemporary and welcoming, The Harriers creates a great first impression with its striking main entrance foyer, secure building with CCTV, video entry, access-controlled as well as secure underground parking. There is also a discreet Concierge service and an exclusive on-site residents' gym.



24

HOUR LUXURY WITH A HIGH
SPECIFICATION AND BEAUTIFULLY
DESIGNED INTERIORS

Beautifully designed spaces for everyday
dining and classy entertaining, kitchens
combine high-performance with sleek lines
and high specifications.



Engineered wood flooring, porcelain tiling and luxurious carpeting complemented by underfloor heating ensure a warm welcome whatever the weather, while carefully-chosen colours create a haven of calm from the moment you arrive.

Luxurious hotel-style bathrooms provide a tranquil space to relax, rewind and recharge.

KT1

AN ENVIABLE ADDRESS

The Harriers will create a new focal point in this attractive leafy enclave just a few minutes from the vibrant communities of Kingston and Surbiton.

The stylish apartments are set within beautifully landscaped gardens and communal spaces, with paved walkways all designed to create maximum serenity and ease.

Finished to the highest specification, The Harriers creates a feeling of relaxed luxury and benefits from concierge, gym, on-site cycle stores and secure underground parking.





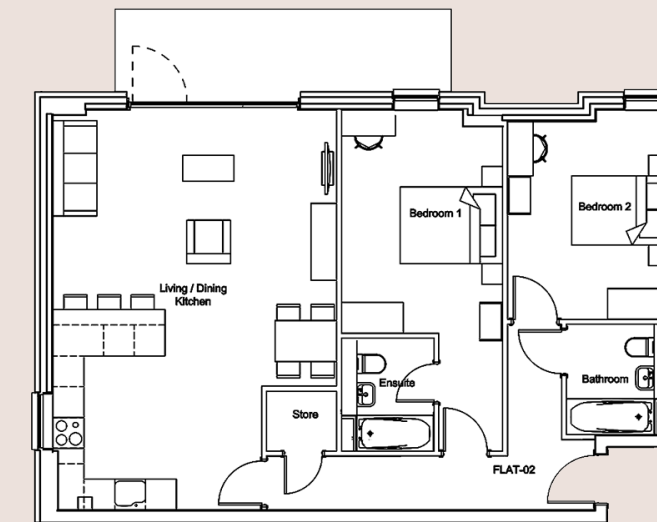
CENTRE BLOCK
GROUND FLOOR

G
CENTRE
BLOCK
GROUND
FLOOR

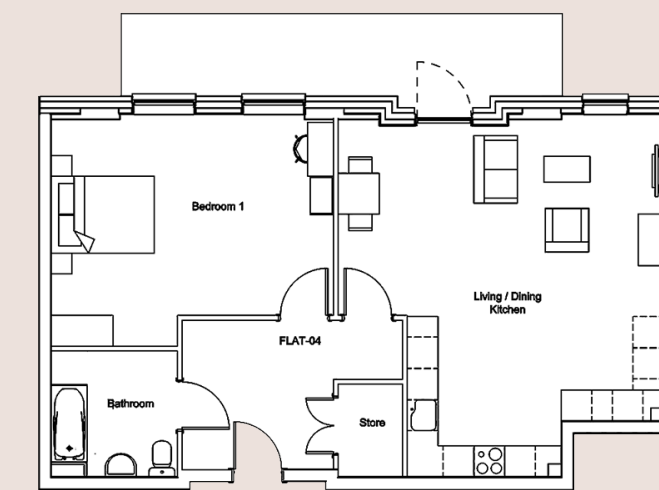
APARTMENT 1	90.4m ²	973ft ²
Living/Dining/Kitchen	7.78m* x 5.52m*	25' 6"" x 18' 1""*
Master Bedroom	6.54m* x 3.14m*	21' 5"" x 10' 4""*
Bedroom 2	4.07m x 3.15m	13' 4"" x 10' 4""
APARTMENT 2	90.4m ²	973ft ²
Living/Dining/Kitchen	7.78m* x 5.46m*	25' 6"" x 17' 11""*
Master Bedroom	6.57m* x 3.14m*	21' 7"" x 10' 4""*
Bedroom 2	4.07m x 3.15m	13' 4"" x 10' 4""
APARTMENT 3	80.6m ²	868ft ²
Living/Dining/Kitchen	6.96m* x 6.34m*	22' 10""* x 20' 10""*
Hallway	2.90m x 3.04m	9' 6"" x 10'
Bedroom	4.41m* x 5.50m*	14' 6"" x 18' 1""*
APARTMENT 4	80.6m ²	868ft ²
Living/Dining/Kitchen	6.83m* x 6.34m*	22' 5"" x 20' 10""*
Hallway	2.90m x 3.07m	9' 6"" x 10' 1"
Bedroom	4.41m* x 5.50m*	14' 6"" x 18' 1""*
APARTMENT 5	41.9m ²	451ft ²
Studio	6.69m* x 7.36m*	21' 11""* x 24' 2""*
APARTMENT 6	74.8m ²	805ft ²
Living/Dining/Kitchen	4.36m x 5.46m*	14' 4"" x 17' 11""*
Master Bedroom	6.96m* x 3.09m*	22' 10""* x 10' 2""*
Bedroom 2	5.07m* x 3.4m*	16' 8"" x 11' 2""*
APARTMENT 7	40.7m ²	438ft ²
Studio	6.96m* x 5.78m*	22' 10""* x 19'*
APARTMENT 8	65.8m ²	708ft ²
Living/Dining/Kitchen	5.36m* x 5.75m*	17' 7"" x 18' 10""*
Hallway	2.30m x 3.59m	7' 7"" x 11' 9""
Bedroom	4.32m x 4.70m	14' 2"" x 15' 5""

*Denotes Maximum measurement
Floor plans shown for Centre Block, Ground Floor are for approximate measurements only. Exact layout and sizes may vary. All measurements may vary within a tolerance of 5%.

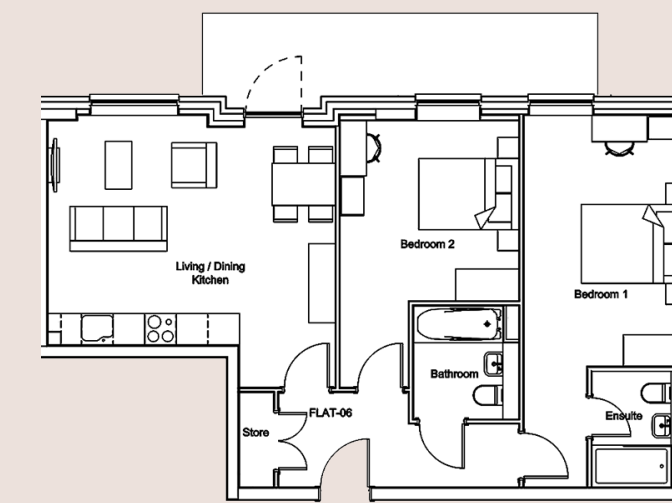
DESIGNED FOR CONTEMPORARY LIVING, THE GROUND FLOOR CONSISTS OF STUDIO, ONE AND TWO BEDROOM APARTMENTS. THE CONCIERGE AND GYM ARE FOUND ON THIS FLOOR AND THERE IS EASY ACCESS TO THE SECURE UNDERGROUND PARKING ALONG WITH ACCESS TO THE LANDSCAPED GARDENS.



2



4

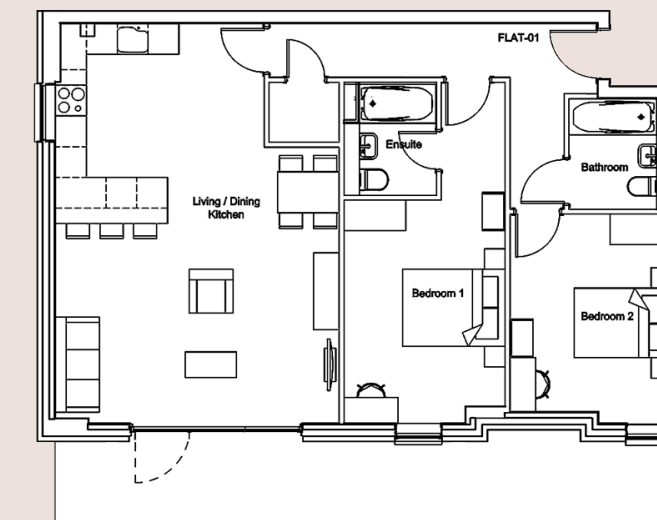
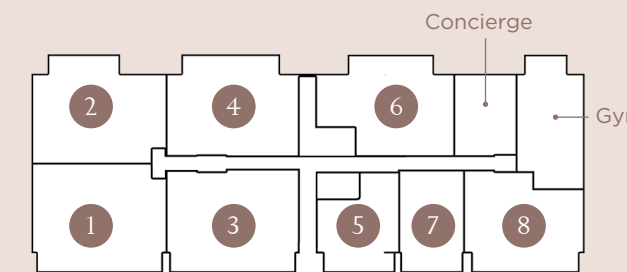


6

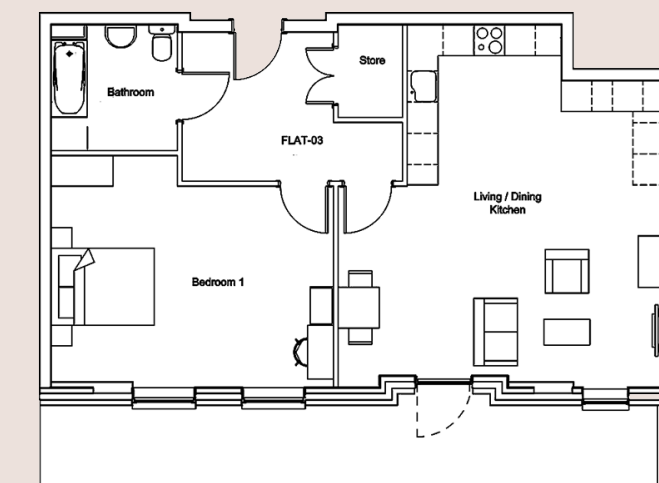


8

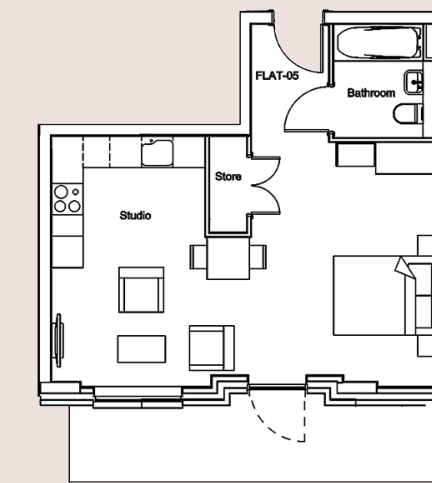
CENTRE BLOCK
GROUND FLOOR
MASTERPLAN



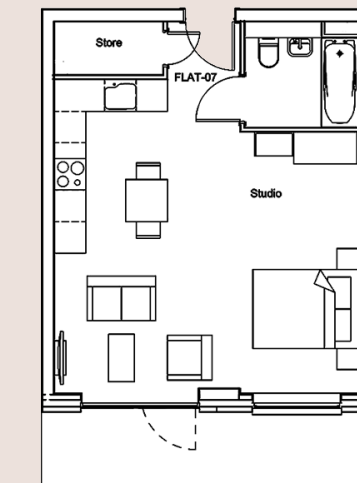
1



3



5



7

1

CENTRE BLOCK 1st FLOOR

1

CENTRE BLOCK 1ST FLOOR

APARTMENT 9	104.5m²	1125ft²
Living/Dining/Kitchen	7.78m x 4.69m	25' 6" x 15' 5"
Master Bedroom	6.64m* x 2.90m	21' 9" x 9' 6"
Bedroom 2	4.07m x 3.15m	13' 4" x 10' 4"
Bedroom 3	4.57m x 2.75m	15' x 9'
APARTMENT 10	104.3m²	1123ft²
Living/Dining/Kitchen	7.78m x 4.79m	25' 6" x 15' 9"
Master Bedroom	6.49m* x 2.90m	21' 4" x 9' 6"
Bedroom 2	4.07m x 3.15m	13' 4" x 10' 4"
Bedroom 3	4.57m x 2.75m	15' x 9'
APARTMENT 11	55.8m²	601ft²
Living/Dining/Kitchen	7.06m* x 4.48m*	23' 2" x 14' 8"
Bedroom	4.14m x 3.50m	13' 7" x 11' 6"
APARTMENT 12	55.3m²	595ft²
Living/Dining/Kitchen	6.96m* x 4.46m*	22' 10" x 14' 8"
Bedroom	4.14m x 3.50m	13' 7" x 11' 6"
APARTMENT 13	53.7m²	578ft²
Living/Dining/Kitchen	5.97m x 3.61m	19' 7" x 11' 10"
Bedroom	3.61m x 3.69m	11' 10" x 12' 1"
APARTMENT 14	50.1m²	539ft²
Living/Dining/Kitchen	5.87m* x 3.61m*	19' 3" x 11' 10"
Bedroom	3.21m x 3.69m	10' 6" x 12' 1"
APARTMENT 15	50.6m²	545ft²
Living/Dining/Kitchen	7.06m* x 3.76m*	23' 2" x 12' 4"
Bedroom	4.81m* x 3.35m*	15' 9" x 11"
APARTMENT 16	50.4m²	543ft²
Living/Dining/Kitchen	6.96m* x 3.76m*	22' 10" x 12' 4"
Bedroom	4.81m* x 3.35m*	15' 9" x 11"
APARTMENT 17	77.1m²	830ft²
Living/Dining/Kitchen	7.78m* x 4.79m*	25' 6" x 15' 9"
Master Bedroom	5.66m* x 2.91m*	18' 7" x 9' 7"
Bedroom 2	4.58m* x 3.15m*	15" x 10' 4"
APARTMENT 18	77m²	829ft²
Living/Dining/Kitchen	7.78m* x 4.79m*	25' 6" x 15' 9"
Master Bedroom	5.76m* x 2.91m*	18' 11" x 9' 7"
Bedroom 2	4.60m* x 3.15m*	15' 1" x 10' 4"

*Denotes Maximum measurement
Floor plans shown for Centre Block, First Floor are for approximate measurements only. Exact layout and sizes may vary.
All measurements may vary within a tolerance of 5%.



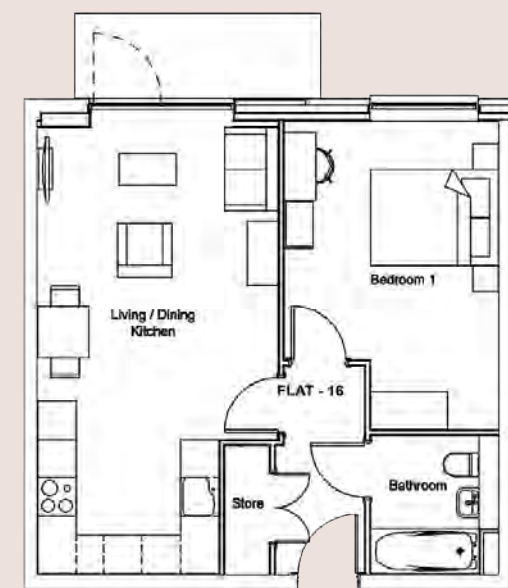
10



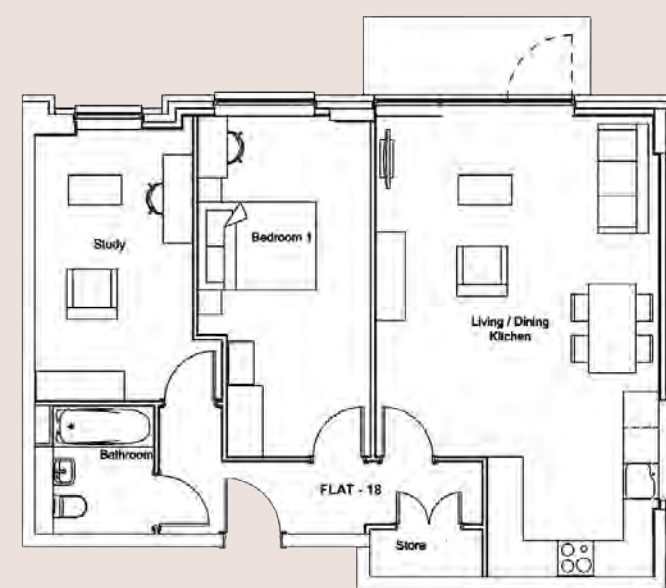
12



14

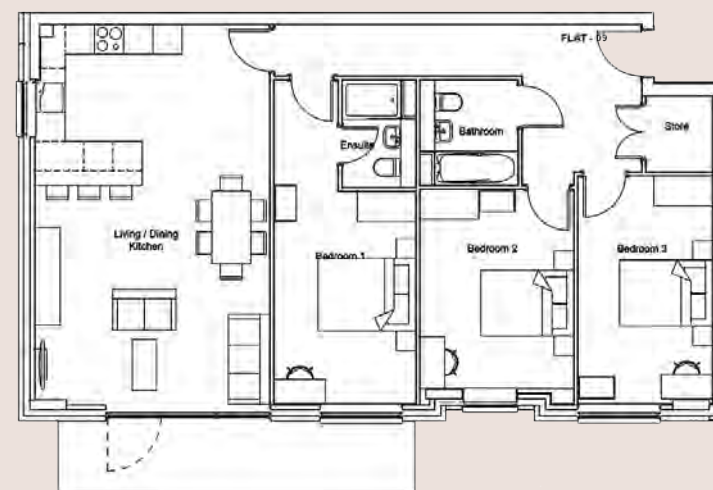
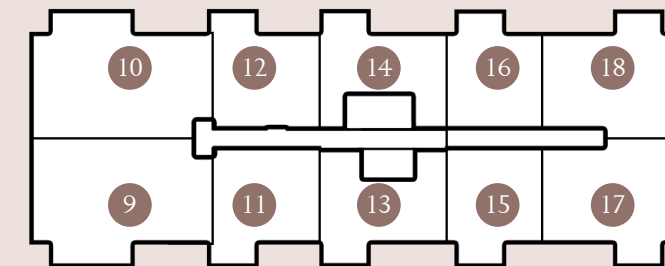


16

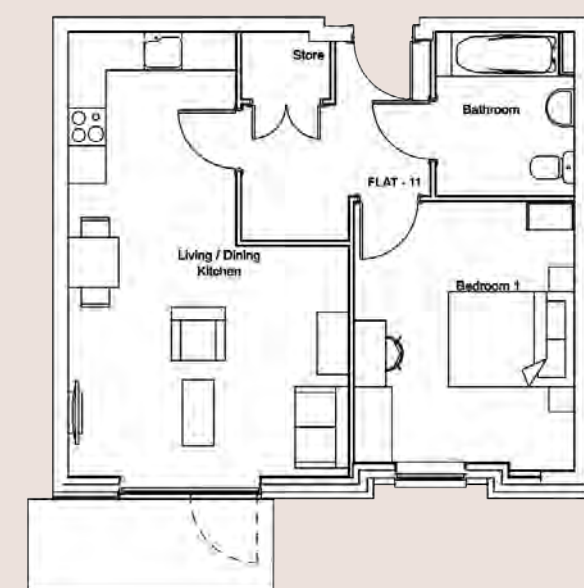


18

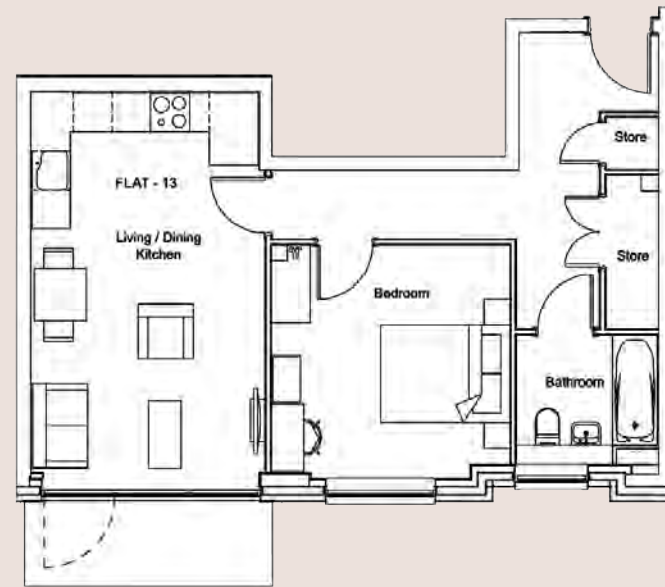
CENTRE BLOCK FIRST FLOOR MASTERPLAN



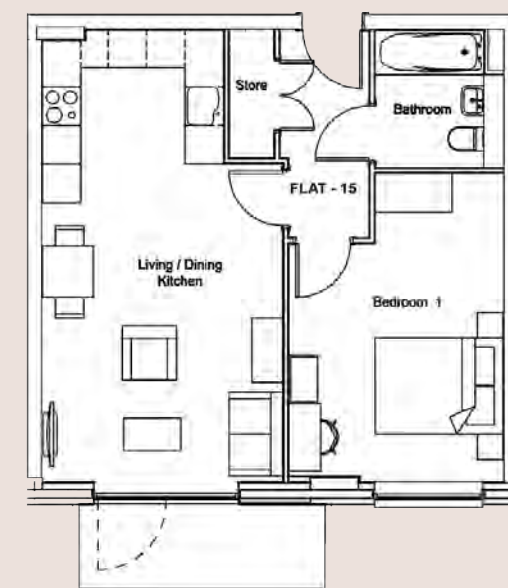
9



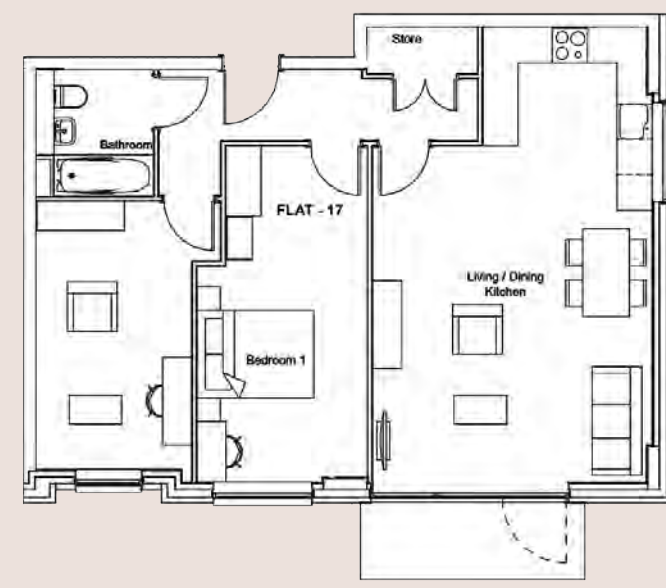
11



13



15



17

2

CENTRE BLOCK 2nd FLOOR

2

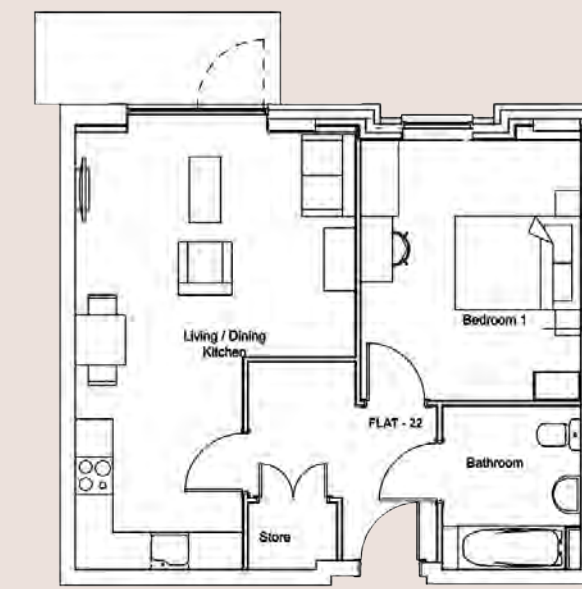
CENTRE BLOCK 2ND FLOOR

APARTMENT 19	104.5m²	1125ft²
Living/Dining/Kitchen	7.78m x 4.69m	25' 6" x 15' 5"
Master Bedroom	6.64m* x 2.90m	21' 9" x 9' 6"
Bedroom 2	4.07m x 3.15m	13' 4" x 10' 4"
Bedroom 3	4.57m x 2.75m	15' x 9'
APARTMENT 20	104.3m²	1123ft²
Living/Dining/Kitchen	7.78m x 4.79m	25' 6" x 15' 9"
Master Bedroom	6.49m* x 2.90m	21' 4" x 9' 6"
Bedroom 2	4.07m x 3.15m	13' 4" x 10' 4"
Bedroom 3	4.57m x 2.75m	15' x 9'
APARTMENT 21	55.8m²	601ft²
Living/Dining/Kitchen	7.06m* x 4.48m*	23' 2" x 14' 8"
Bedroom	4.14m x 3.50m	13' 7" x 11' 6"
APARTMENT 22	55.3m²	595ft²
Living/Dining/Kitchen	6.96m* x 4.46m*	22' 10" x 14' 8"
Bedroom	4.14m x 3.50m	13' 7" x 11' 6"
APARTMENT 23	53.7m²	578ft²
Living/Dining/Kitchen	5.97m x 3.61m	19' 7" x 11' 10"
Bedroom	3.61m x 3.69m	11' 10" x 12' 1"
APARTMENT 24	50.1m²	539ft²
Living/Dining/Kitchen	5.87m* x 3.61m*	19' 3" x 11' 10"
Bedroom	3.21m x 3.69m	10' 6" x 12' 1"
APARTMENT 25	50.6m²	545ft²
Living/Dining/Kitchen	7.06m* x 3.76m*	23' 2" x 12' 4"
Bedroom	4.81m* x 3.35m*	15' 9" x 11"
APARTMENT 26	50.4m²	543ft²
Living/Dining/Kitchen	6.96m* x 3.76m*	22' 10" x 12' 4"
Bedroom	4.81m* x 3.35m*	15' 9" x 11"
APARTMENT 27	77.1m²	830ft²
Living/Dining/Kitchen	7.78m* x 4.79m*	25' 6" x 15' 9"
Master Bedroom	5.66m* x 2.91m*	18' 7" x 9' 7"
Bedroom 2	4.58m* x 3.15m*	15' x 10' 4"
APARTMENT 28	77m²	829ft²
Living/Dining/Kitchen	7.78m* x 4.79m*	25' 6" x 15' 9"
Master Bedroom	5.76m* x 2.91m*	18' 11" x 9' 7"
Bedroom 2	4.60m* x 3.15m*	15' 1" x 10' 4"

*Denotes Maximum measurement
Floor plans shown for Centre Block, Second Floor are for approximate measurements only. Exact layout and sizes may vary. All measurements may vary within a tolerance of 5%.



20



22



24

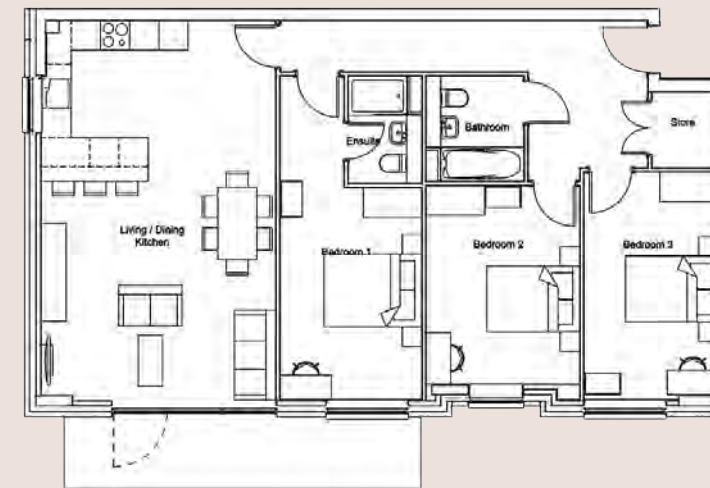
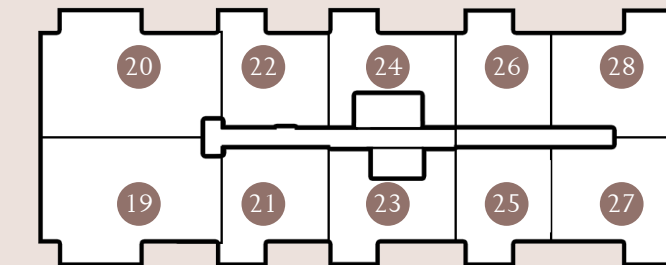


26

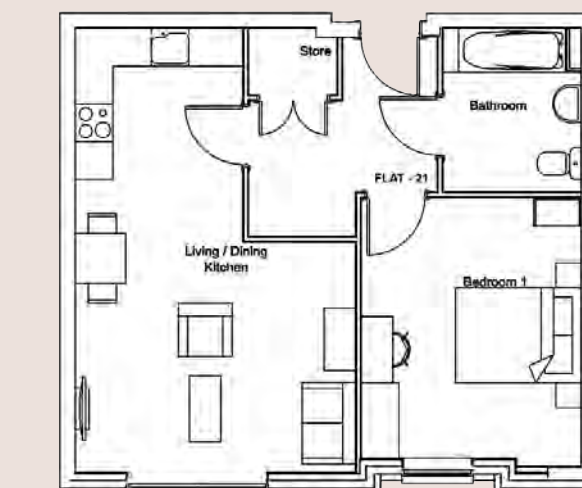


28

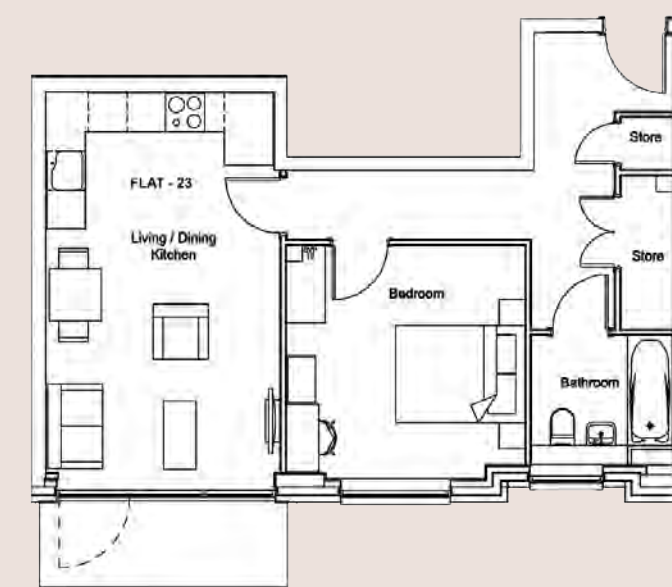
CENTRE BLOCK SECOND FLOOR MASTERPLAN



19



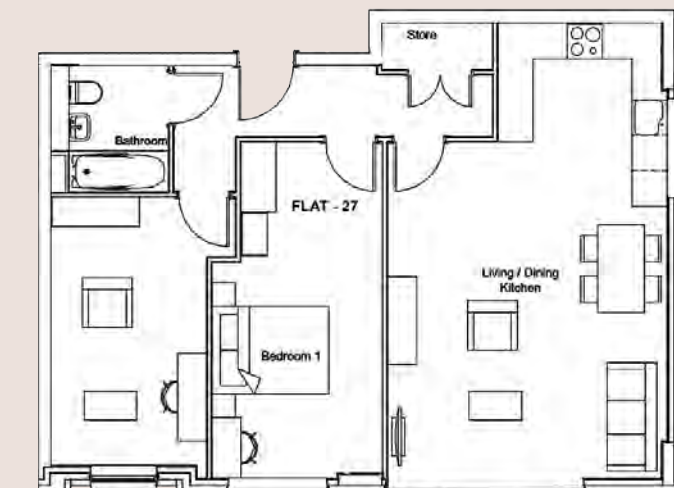
21



23



25



27

3

CENTRE BLOCK 3rd FLOOR

3

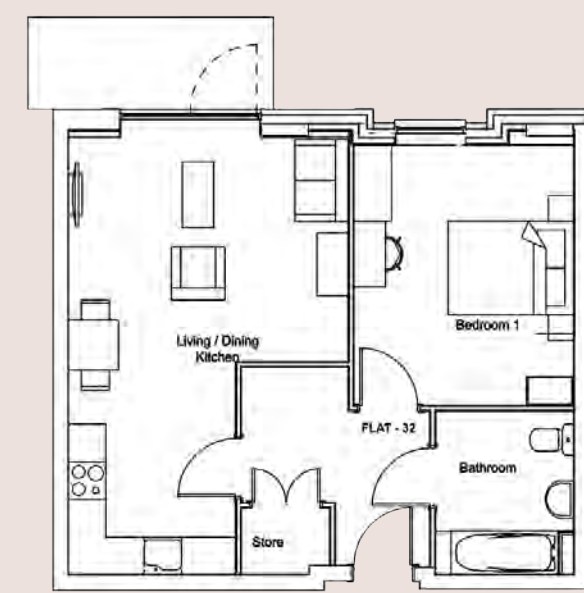
CENTRE BLOCK 3RD FLOOR

APARTMENT 29	104.5m²	1125ft²
Living/Dining/Kitchen	7.78m x 4.69m	25' 6" x 15' 5"
Master Bedroom	6.64m* x 2.90m	21' 9" x 9' 6"
Bedroom 2	4.07m x 3.15m	13' 4" x 10' 4"
Bedroom 3	4.57m x 2.75m	15' x 9'
APARTMENT 30	104.3m²	1123ft²
Living/Dining/Kitchen	7.78m x 4.79m	25' 6" x 15' 9"
Master Bedroom	6.49m* x 2.90m	21' 4" x 9' 6"
Bedroom 2	4.07m x 3.15m	13' 4" x 10' 4"
Bedroom 3	4.57m x 2.75m	15' x 9'
APARTMENT 31	55.8m²	601ft²
Living/Dining/Kitchen	7.06m* x 4.48m*	23' 2" x 14' 8"
Bedroom	4.14m x 3.50m	13' 7" x 11' 6"
APARTMENT 32	55.3m²	595ft²
Living/Dining/Kitchen	6.96m* x 4.46m*	22' 10" x 14' 8"
Bedroom	4.14m x 3.50m	13' 7" x 11' 6"
APARTMENT 33	53.7m²	578ft²
Living/Dining/Kitchen	5.97m x 3.61m	19' 7" x 11' 10"
Bedroom	3.61m x 3.69m	11' 10" x 12' 1"
APARTMENT 34	50.1m²	539ft²
Living/Dining/Kitchen	5.87m* x 3.61m*	19' 3" x 11' 10"
Bedroom	3.21m x 3.69m	10' 6" x 12' 1"
APARTMENT 35	50.6m²	545ft²
Living/Dining/Kitchen	7.06m* x 3.76m*	23' 2" x 12' 4"
Bedroom	4.81m* x 3.35m*	15' 9" x 11"
APARTMENT 36	50.4m²	543ft²
Living/Dining/Kitchen	6.96m* x 3.76m*	22' 10" x 12' 4"
Bedroom	4.81m* x 3.35m*	15' 9" x 11"
APARTMENT 37	77.1m²	830ft²
Living/Dining/Kitchen	7.78m* x 4.79m*	25' 6" x 15' 9"
Master Bedroom	5.66m* x 2.91m*	18' 7" x 9' 7"
Bedroom 2	4.58m* x 3.15m*	15' x 10' 4"
APARTMENT 38	77m²	829ft²
Living/Dining/Kitchen	7.78m* x 4.79m*	25' 6" x 15' 9"
Master Bedroom	5.76m* x 2.91m*	18' 11" x 9' 7"
Bedroom 2	4.60m* x 3.15m*	15' 1" x 10' 4"

*Denotes Maximum measurement
Floor plans shown for Centre Block, Third Floor are for approximate measurements only. Exact layout and sizes may vary.
All measurements may vary within a tolerance of 5%.



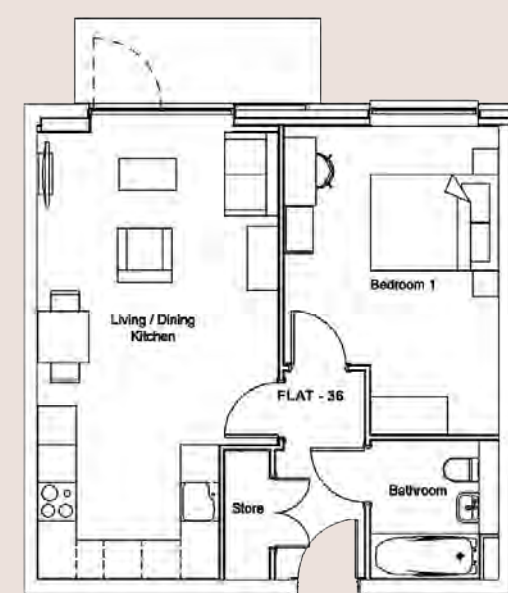
30



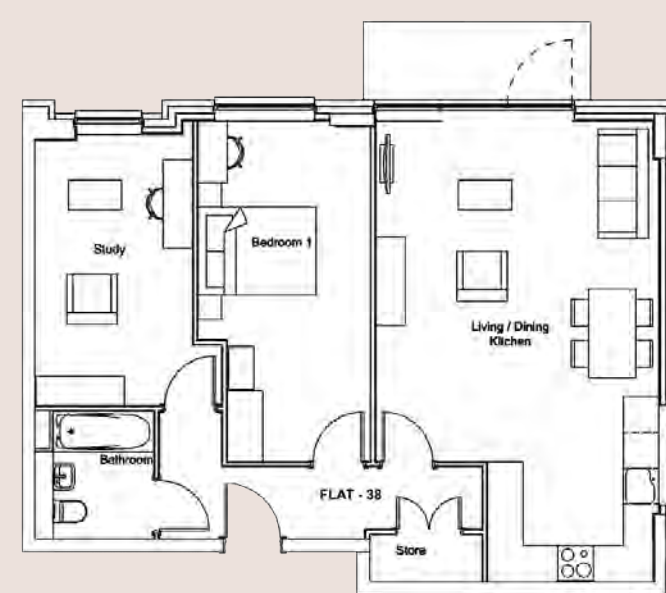
32



34

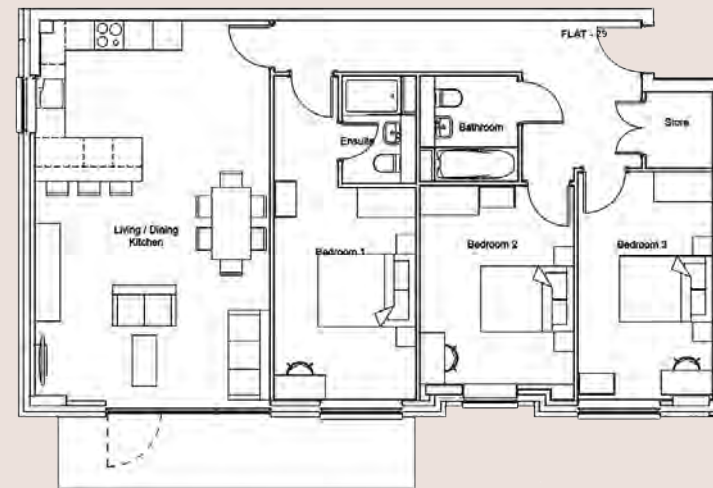
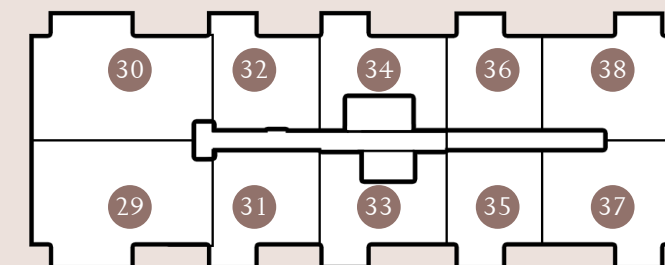


36

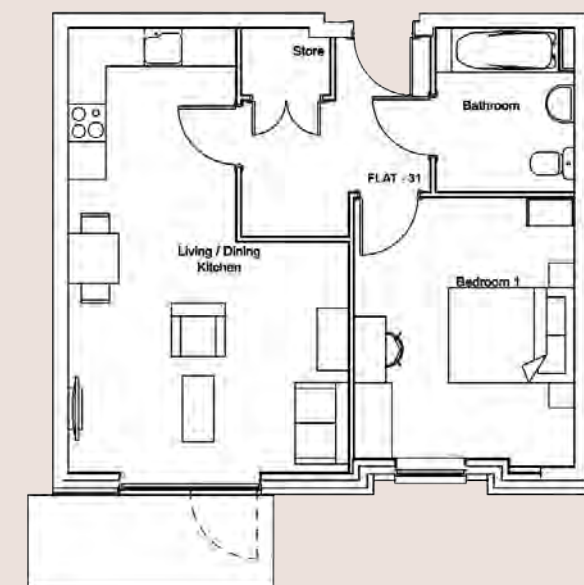


38

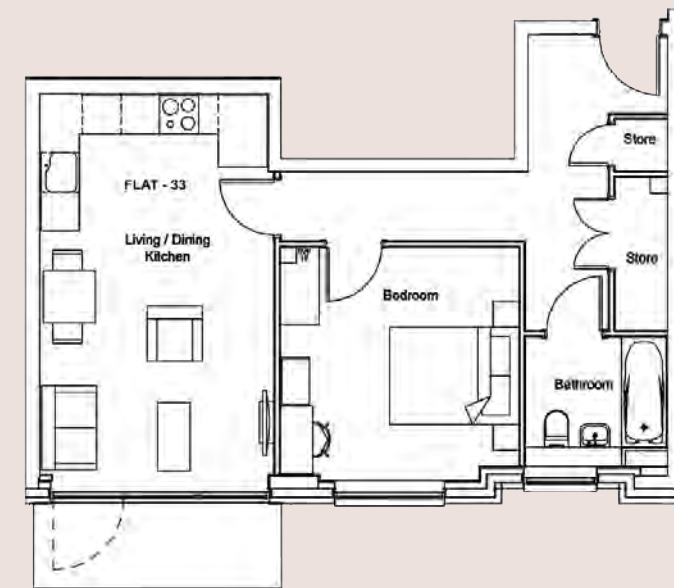
CENTRE BLOCK THIRD FLOOR MASTERPLAN



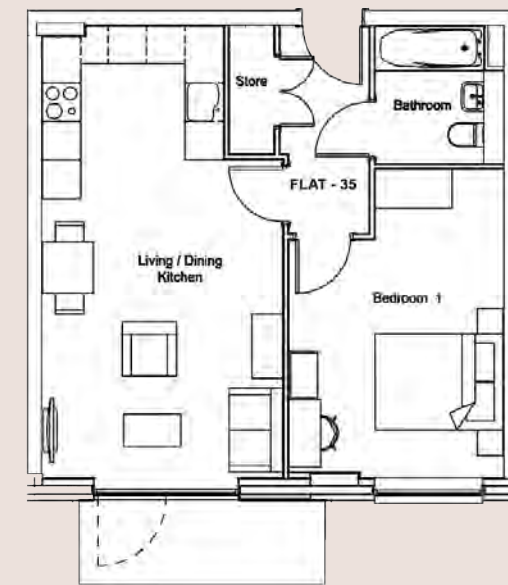
29



31



33



35



37

4

CENTRE BLOCK 4th FLOOR

4

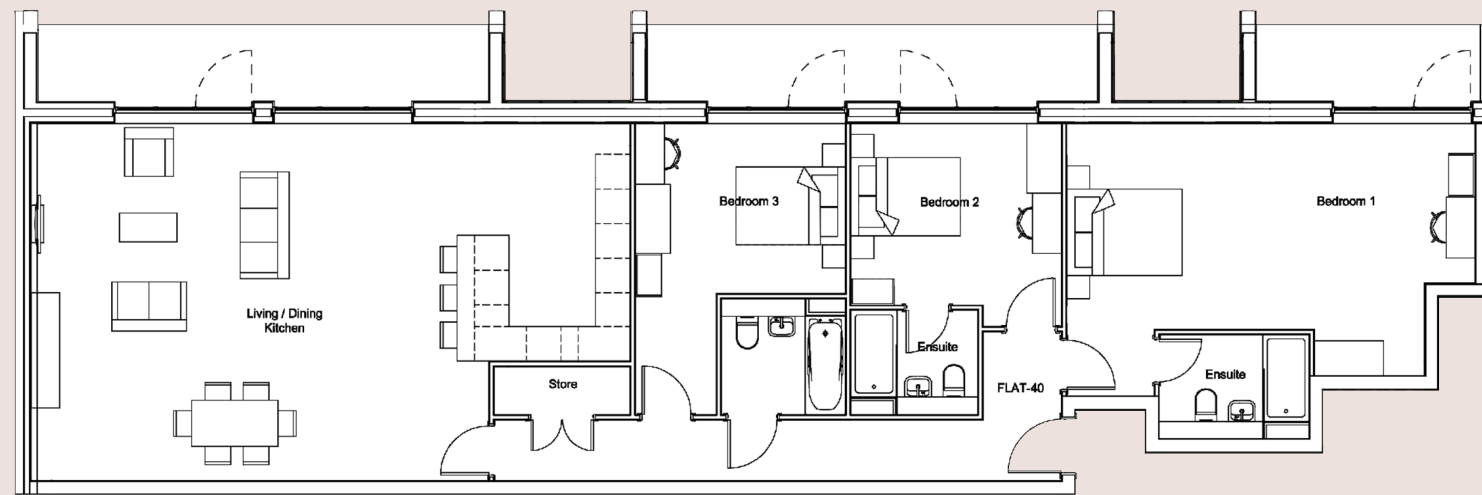
CENTRE BLOCK 4TH FLOOR

APARTMENT 39	145.4m²	1565ft²
Living/Dining/Kitchen	6.17m* x 10.33m*	20' 3"* x 33' 11"*
Master Bedroom	4.72m* x 7.08m*	15' 6"* x 23' 3"*
Bedroom 2	3.52m* x 3.63m*	11' 7"* x 11' 11"*
Bedroom 3	5.04m* x 3.71m*	16' 6"* x 12' 2"*
APARTMENT 40	143.8m²	1548ft²
Living/Dining/Kitchen	6.18m* x 10.38m*	20' 3"* x 34' 1"*
Master Bedroom	4.37m* x 7.08m*	14' 4"* x 23' 3"*
Bedroom 2	3.52m* x 3.63m*	11' 7"* x 11' 11"*
Bedroom 3	5.04m* x 3.64m*	16' 6"* x 11' 11"*
APARTMENT 41	136.7m²	1471ft²
Living/Dining/Kitchen	6.17m x 10.38m	20' 3" x 34' 1"
Master Bedroom	3.14m* x 7.02m*	10' 4"* x 23'
Bedroom 2	3.14m x 3.69m	10' 4" x 12' 1"
Bedroom 3	5.04m* x 3.64m*	16' 6"* x 11' 11"*
APARTMENT 42	134.8m²	1451ft²
Living/Dining/Kitchen	6.18m* x 10.31m*	20' 3"* x 33' 10"*
Master Bedroom	4.72m* x 7.31m	15' 6"* x 24'
Bedroom 2	3.30m x 3.39m	10' 10" x 11' 1"
Bedroom 3	5.04m x 3.71m	16' 6" x 12' 2"

*Denotes Maximum measurement
Floor plans shown for Centre Block, Fourth Floor are for approximate measurements only. Exact layout and sizes may vary. All measurements may vary within a tolerance of 5%.

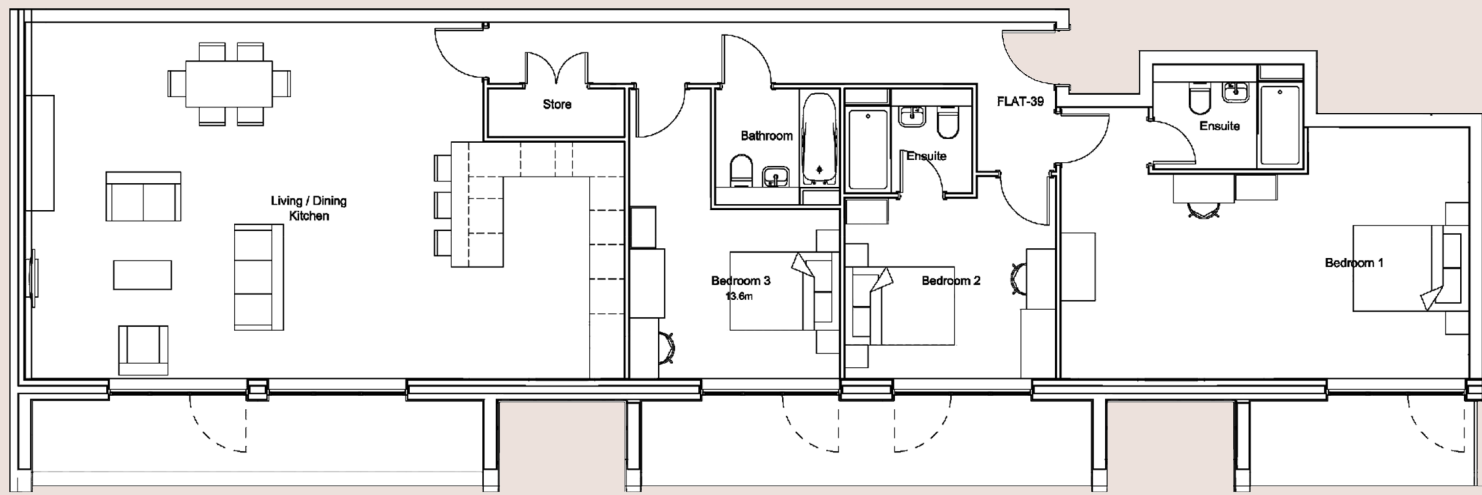
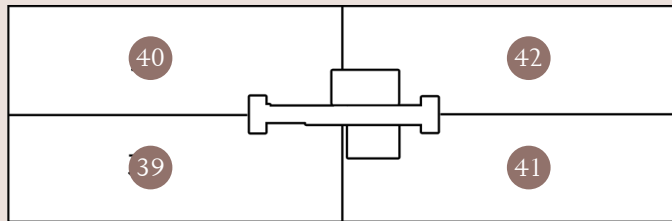
WITH HUGE WINDOWS THAT LET LIGHT FLOOD IN, THE FOURTH FLOOR CONSISTS EXCLUSIVELY OF LUXURY THREE BEDROOM APARTMENTS.

GENEROUSLY SPACIOUS YET WARMLY INTIMATE WITH HIGH SPECIFICATION FINISHES, THE OPEN-PLAN LAYOUT MAKES THESE APARTMENTS THE IDEAL PLACE FOR GET-TOGETHERS OR A DESIRABLE RETREAT TO UNWIND.

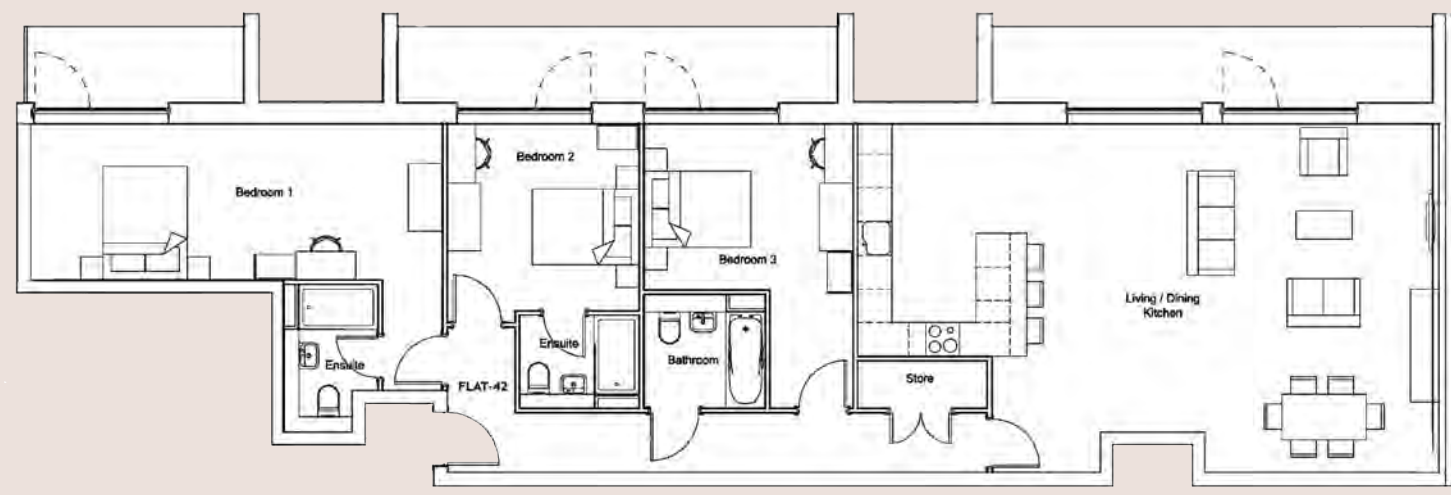


40

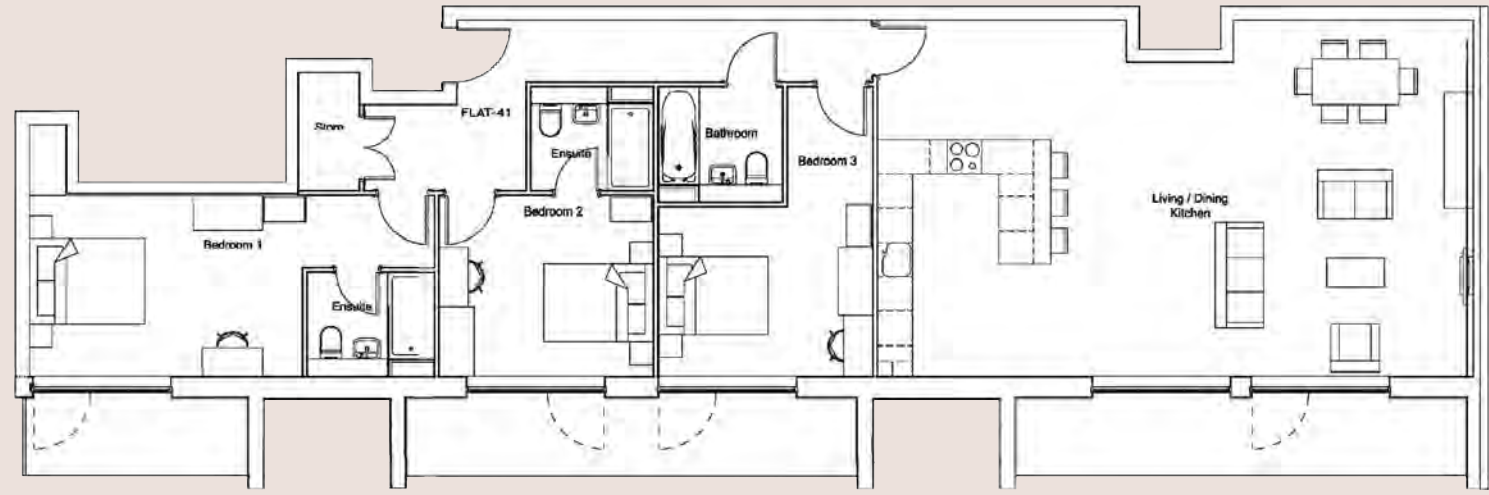
CENTRE BLOCK
FOURTH FLOOR
MASTERPLAN



39

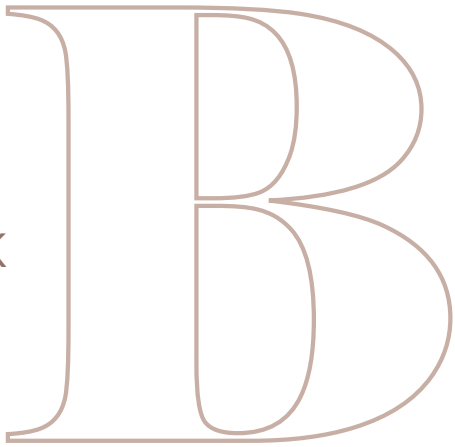


42



41

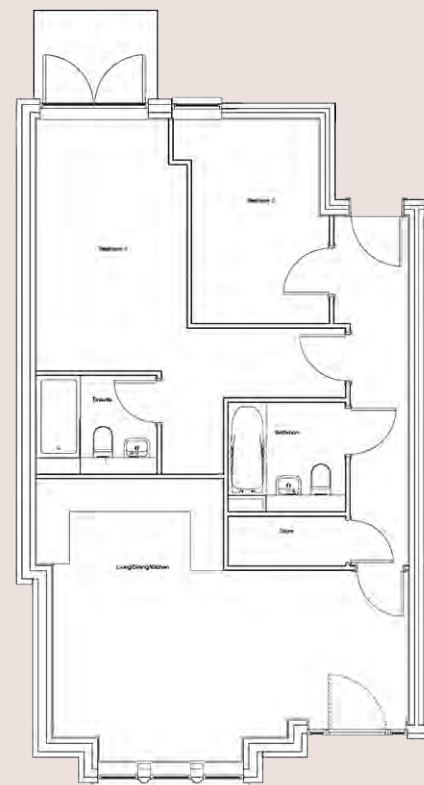
BLOCK



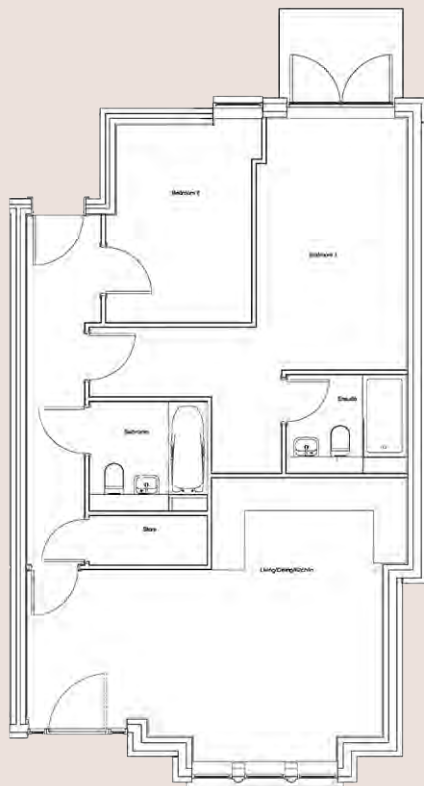
APARTMENT 1 (G)	73.8m²	794ft²
Living/Dining/Kitchen	5.17m* x 6.50m*	17' 6" x 21' 4"*
Master Bedroom	4.61m x 2.75m	15' 1" x 9'
Bedroom 2	3.74m x 2.52m	12' 3" x 8' 3"
APARTMENT 2 (G)	74.7m²	804ft²
Living/Dining/Kitchen	5.18m* x 6.50m*	17' 6" x 21' 4"*
Master Bedroom	4.61m x 2.75m	15' 1" x 9'
Bedroom 2	3.62m x 2.67m	11' 11" x 8' 9"
APARTMENT 3 (1st)	73.8m²	794ft²
Living/Dining/Kitchen	6.26m* x 5.17m*	20' 6" x 17'
Master Bedroom	5.47m* x 3.60m*	17' 11" x 11' 10"*
Bedroom 2	3.25m x 2.82m	10' 8" x 9' 3"
APARTMENT 4 (1st)	74.8m²	805ft²
Living/Dining/Kitchen	6.26m* x 5.32m*	20' 6" x 17' 5"*
Master Bedroom	5.46m* x 3.60m*	17' 11" x 11' 10"*
Bedroom 2	3.25m x 2.82m	10' 8" x 9' 3"
APARTMENT 5 (2nd)	63.5m²	684ft²
Living/Dining/Kitchen	6.40m* x 4.47m*	21' x 14' 8"*
Bedroom	4.83m* x 4.01m*	15' 10" x 13' 2"*
APARTMENT 6 (2nd)	63.3m²	681ft²
Living/Dining/Kitchen	6.77m* x 4.75m*	22' 3" x 15' 7"*
Bedroom	4.83m* x 4.01m*	15' 10" x 13' 2"*

*Denotes Maximum measurement
Floor plans shown for Block B, are for approximate measurements only. Exact layout and sizes may vary. All measurements may vary within a tolerance of 5%.

GROUND FLOOR

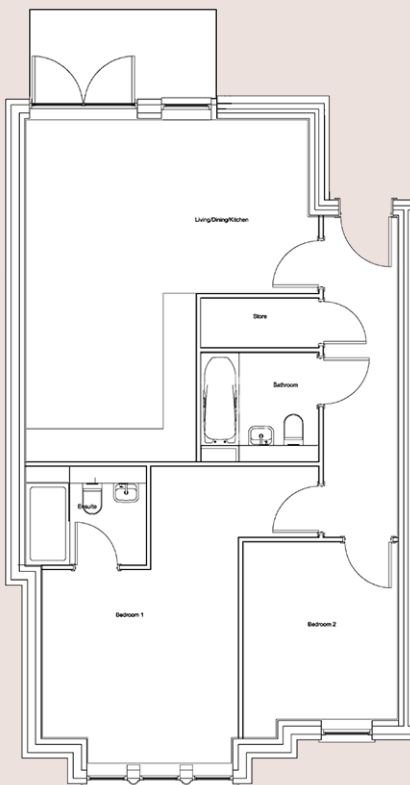


1

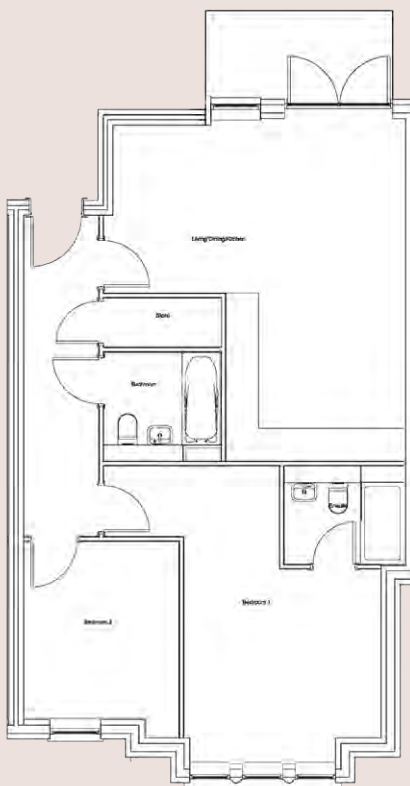


2

FIRST FLOOR

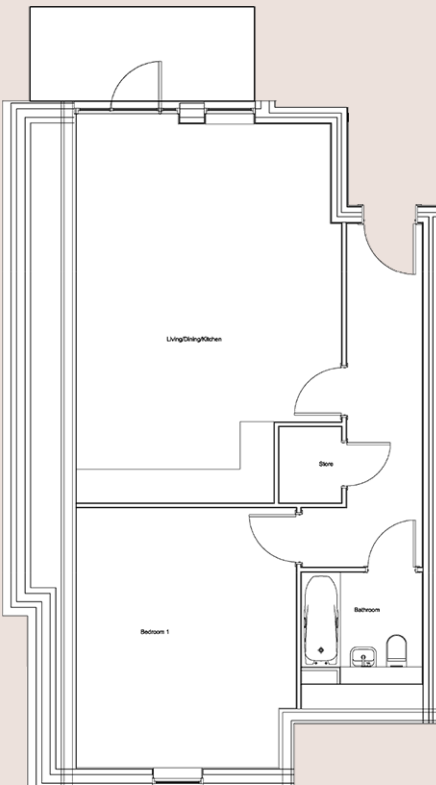


3

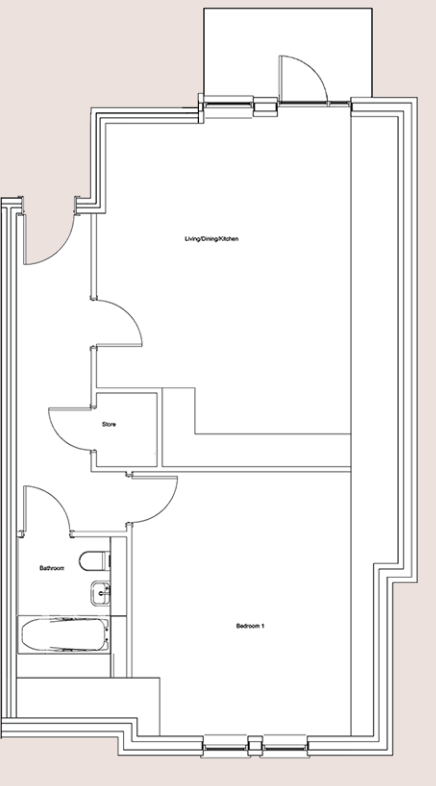


4

SECOND FLOOR

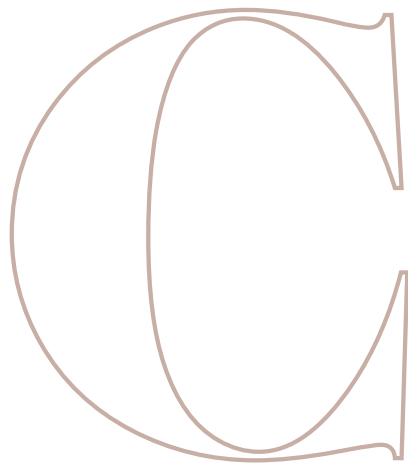


5



6

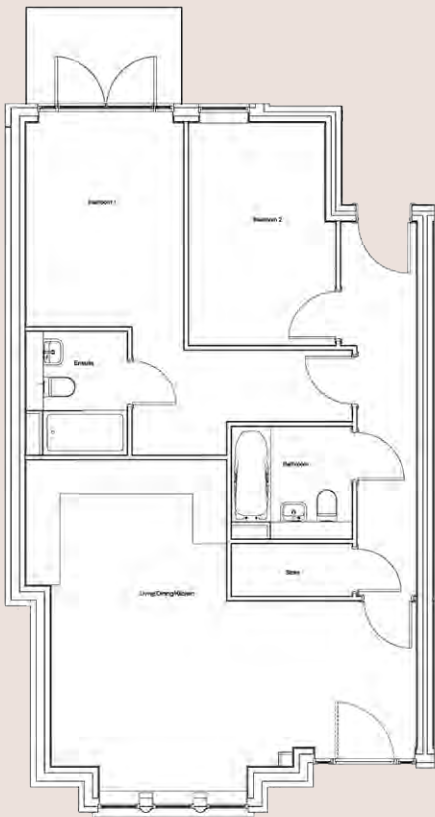
BLOCK



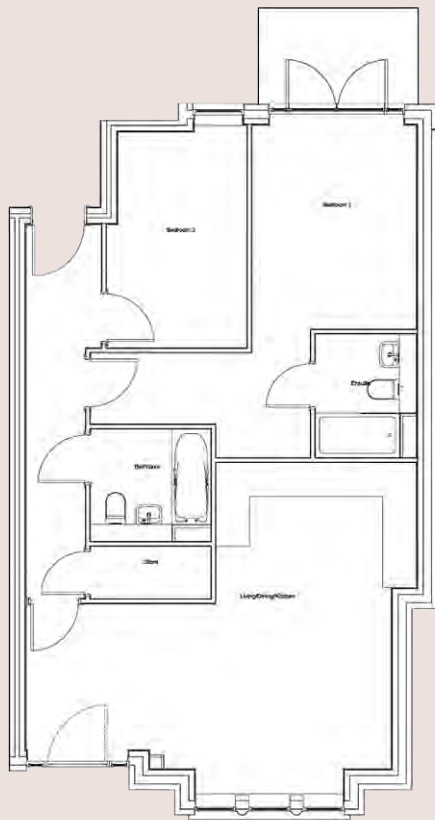
APARTMENT 1 (G)	76.2m ²	820ft ²
Living/Dining/Kitchen	6.50m* x 5.91m*	21' 4''* x 19' 5''*
Master Bedroom	3.64m* x 2.81m*	11' 11''* x 9' 3''*
Bedroom 2	3.98m x 2.62m	13' 1'' x 8' 7''
APARTMENT 2 (G)	76m ²	818ft ²
Living/Dining/Kitchen	6.50m* x 5.91m*	21' 4''* x 19' 5''*
Master Bedroom	3.64m* x 2.93m*	11' 11''* x 9' 7''*
Bedroom 2	3.86m x 2.50m	12' 8'' x 8' 2''
APARTMENT 3 (1st)	76.2m ²	820ft ²
Living/Dining/Kitchen	6.37m* x 5.33m*	20' 11''* x 17' 6''*
Master Bedroom	5.48m* x 3.64m*	18'* x 11' 11''*
Bedroom 2	3.68m x 2.81m	12' 1'' x 9' 3''
APARTMENT 4 (1st)	76m ²	818ft ²
Living/Dining/Kitchen	6.37m* x 5.33m*	20' 11''* x 17' 6''*
Master Bedroom	5.47m* x 3.65m*	17' 11''* x 12'*
Bedroom 2	3.68m x 2.81m	12' 1'' x 9' 3''
APARTMENT 5 (2nd)	64.4m ²	693ft ²
Living/Dining/Kitchen	6.77m* x 4.75m*	22' 3''* x 15' 7''*
Bedroom	4.64m x 3.92m	15' 3'' x 12' 10''
APARTMENT 6 (2nd)	64.2m ²	691ft ²
Living/Dining/Kitchen	6.77m* x 4.75m*	22' 3''* x 15' 7''*
Bedroom	4.64m x 3.92m	15' 3'' x 12' 10''

*Denotes Maximum measurement
Floor plans shown for Block C, are for approximate measurements only. Exact layout and sizes may vary. All measurements may vary within a tolerance of 5%.

GROUND FLOOR

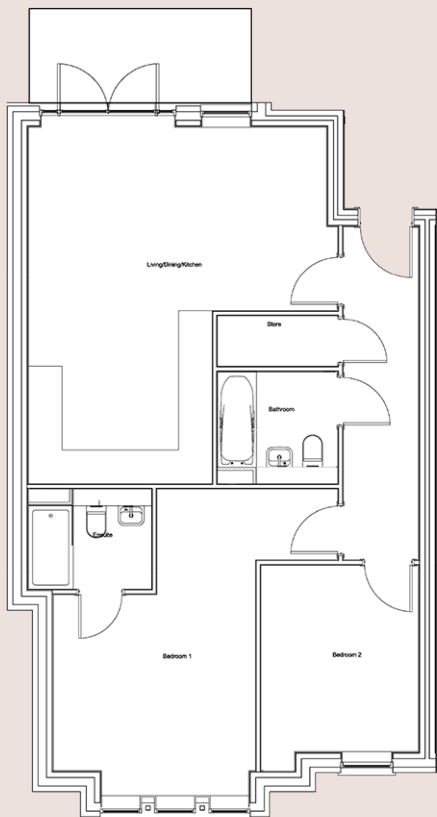


1

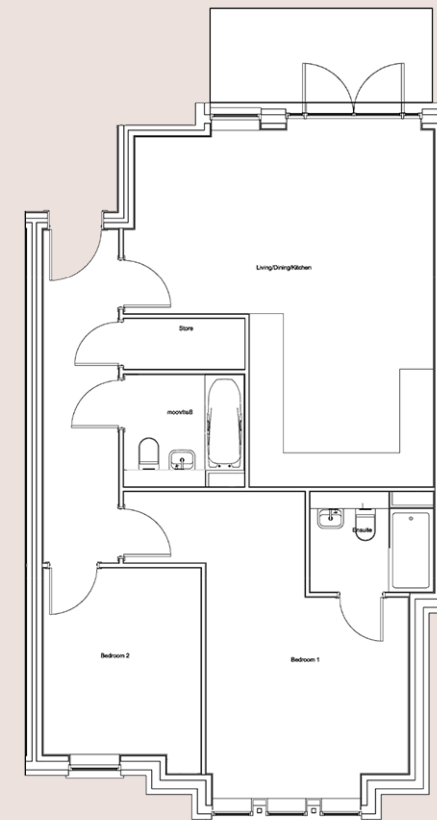


2

FIRST FLOOR

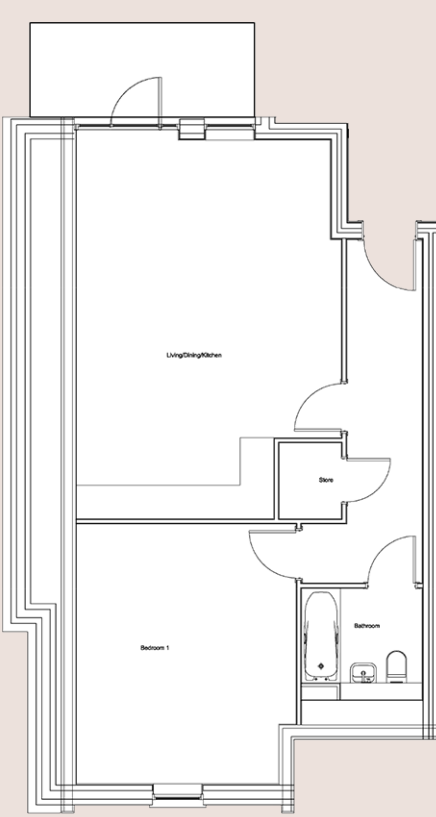


3

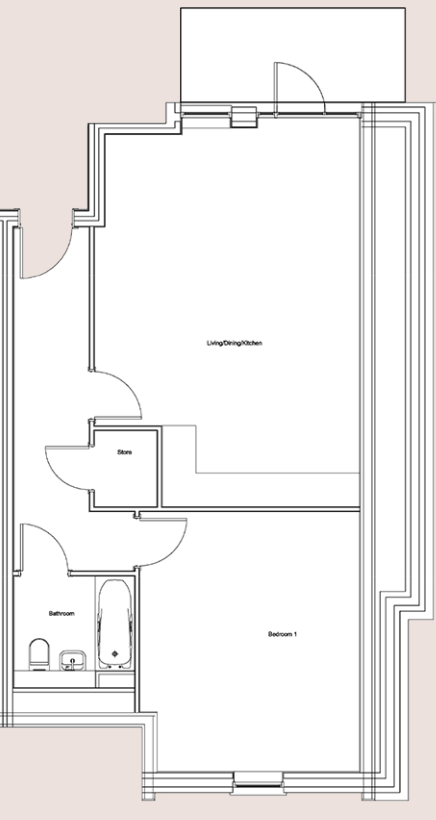


4

SECOND FLOOR

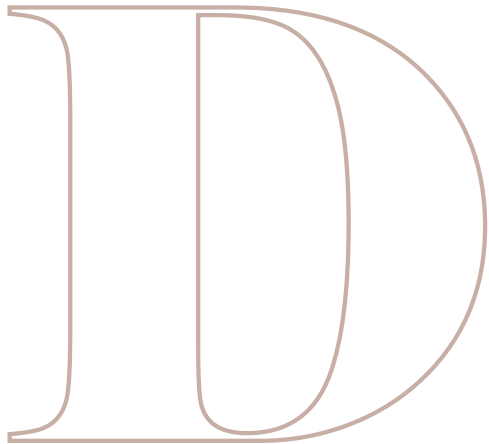


5



6

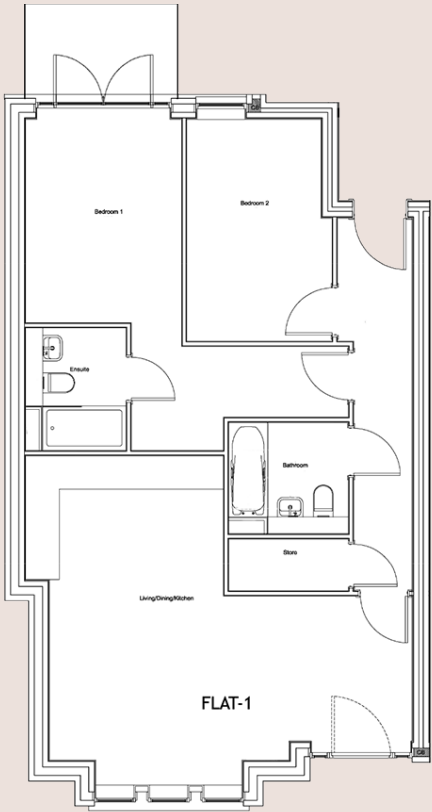
BLOCK



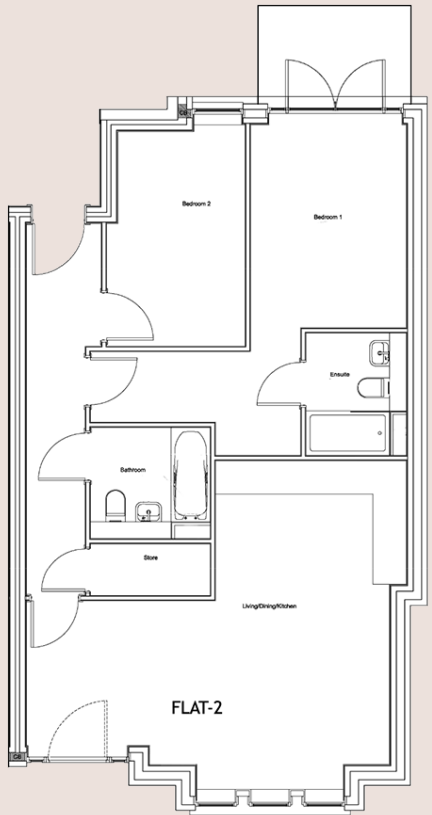
APARTMENT 1 (G)	76m ²	818ft ²
Living/Dining/Kitchen	5.47m* x 6.51m*	17' 11"* x 21' 4"*
Master Bedroom	3.64m x 2.80m	11' 11" x 9' 2"
Bedroom 2	3.98m x 2.61m	13' 1" x 8' 7"
APARTMENT 2 (G)	74.8m ²	805ft ²
Living/Dining/Kitchen	5.94m* x 6.51m*	19' 6"* x 21' 4"*
Master Bedroom	3.64m x 2.80m	11' 11" x 9' 2"
Bedroom 2	3.85m x 2.49m	12' 8" x 8' 2"
APARTMENT 3 (1st)	75.9m ²	817ft ²
Living/Dining/Kitchen	6.37m* x 5.30m*	20' 11"* x 17' 5"*
Master Bedroom	5.50m* x 3.63m*	18' 1"* x 11' 11"*
Bedroom 2	3.34m x 2.82m	10' 11" x 9' 3"
APARTMENT 4 (1st)	74.8m ²	805ft ²
Living/Dining/Kitchen	6.37m* x 5.18m*	20' 11"* x 17'
Master Bedroom	5.50m* x 3.63m*	18' 1"* x 11' 11"
Bedroom 2	3.34m x 2.84m	10' 11" x 9' 4"
APARTMENT 5 (2nd)	64.4m ²	693ft ²
Living/Dining/Kitchen	6.76m* x 4.73m*	22' 2"* x 15' 6"*
Bedroom	4.64m x 3.92m	15' 3" x 12' 10"
APARTMENT 6 (2nd)	64.2m ²	691ft ²
Living/Dining/Kitchen	6.77m* x 4.73m*	22' 3"* x 15' 6"*
Bedroom	4.64m x 3.92m	15' 3" x 12' 10"

*Denotes Maximum measurement
Floor plans shown for Block D, are for approximate measurements only. Exact layout and sizes may vary. All measurements may vary within a tolerance of 5%.

GROUND FLOOR

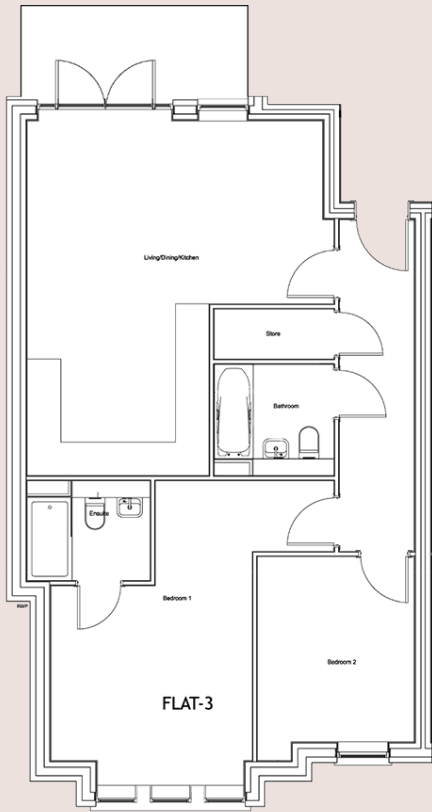


1

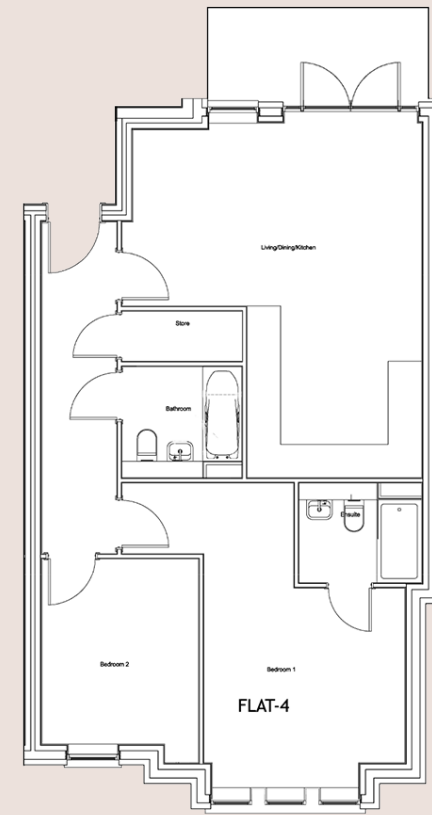


2

FIRST FLOOR

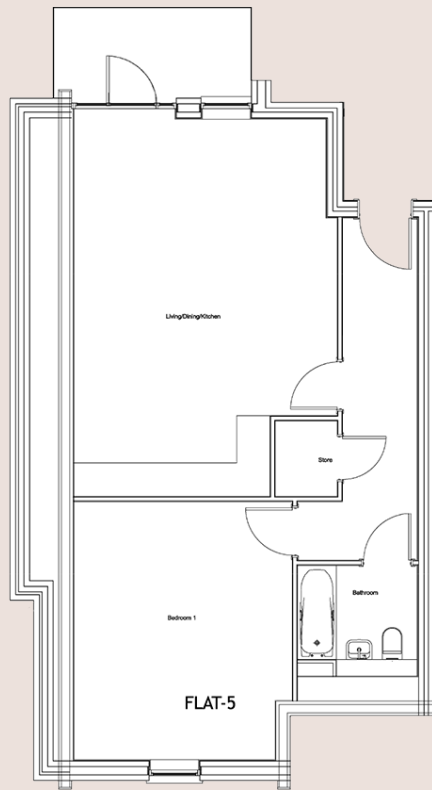


3

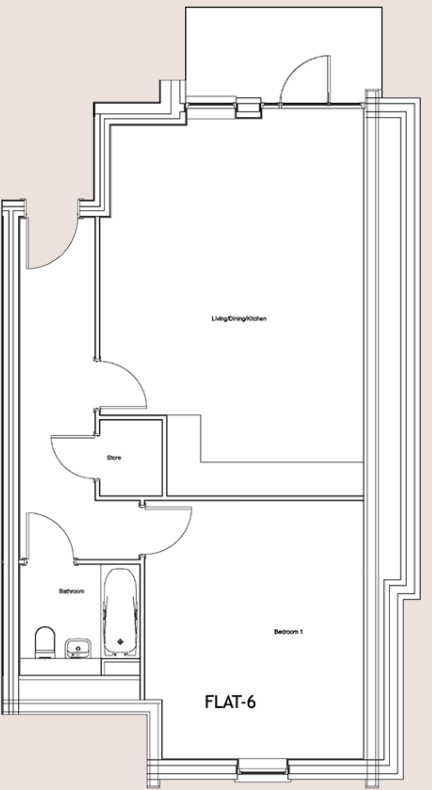


4

SECOND FLOOR



5



6

SPECIFICATION

From the outside, The Harriers exhibits a refined contemporary style, but it’s when you step inside and take in the luxurious interiors and premier specifications that you’ll begin to appreciate that this is a development where day in and day out, you’ll feel perfectly at home.

KITCHEN

- Fully fitted designer kitchen
- Fully integrated Smeg gas / induction hob
- Solid composite worktop
- Smeg integrated oven and microwave
- Smeg integrated dishwasher
- Stainless steel under-mounted sink
- Polished chrome mixer tap
- Smeg extractor hood
- Smeg integrated fridge freezer
- Smeg integrated washer dryer
- Integrated wine fridge to 3 bed flats

BATHROOMS & EN-SUITES

- Interior designed bathrooms and en-suites
- Villeroy & Boch basins & WCs
- Vado basin taps
- Geberit flush plate
- Vado bath taps and shower fittings
- Geberit concealed cistern WC's
- Fully tiled porcelain bathroom
- Designer towel rads

OUTSIDE

- Private balconies / terraces to flats

ELECTRICS & LIGHTING

- Modern consumer units with chrome switches
- Wired for Sky Q
- TV points in kitchen / lounge / diner and bedrooms
- Telephone points in lounge and hallway
- Spot lights to kitchens and bathrooms

HEATING

- Underfloor heating

FLOORING

- Engineered wood flooring to lounge and hallways
- Porcelain tiling to all bathrooms
- Designer selected quality carpets to all bedrooms

FINISHES

- Designer colour palettes to all walls, skirting and architraves
- Fully fitted wardrobes to master bedrooms

DOORS AND WOODWORK

- High quality firecheck wooden doors with designer ironmongery

WARRANTY

- 10 Year Checkmate

AMENITIES

- Concierge
- Gym
- CCTV coverage
- Access controlled secure underground car park
- Communal gardens



NOTE: Interior images are indicative of style only

The information in this document is indicative and is intended to act as a guide only as to the finished product. Accordingly, due to the James Taylor Homes policy of continuous improvement, the finished product may vary from the information provided. These particulars should not be relied upon as accurately describing any of the specific matters described by any order under the Property Misdescriptions Act 1991. This information does not constitute a contract, or warranty. The dimensions given on plans are subject to minor variations and are not intended to be used for carpet sizes, appliance sizes or items of furniture. Interior photography is indicative of style only. Harriers is a marketing name and will not necessarily form part of the approved postal address. Applicants are advised to contact James Taylor Homes to ascertain the availability of any particular property. January 2020.

JAMES TAYLOR HOMES

James Taylor Homes is a dynamic niche residential developer with passion and commitment to deliver high quality and exclusive homes in premier locations throughout the Homes Counties, London and The Algarve.

We have established an unrivalled expertise and reputation in creating unique and imaginative new homes that fuse great design with the latest modern technology and building techniques. Whether it's a contemporary city centre apartment or a stunning executive home, you can be assured that all exude individual character and unique style.

Each of our homes benefits from a ten year structural warranty and our personal approach makes James Taylor Homes the first choice the more discerning customer.



James Taylor House,
St Albans Road East,
Hatfield,
Hertfordshire
AL10 0HE

+44 (0) 1707 244040

sales@jamestaylorhomes.com

www.jamestaylorhomes.com