

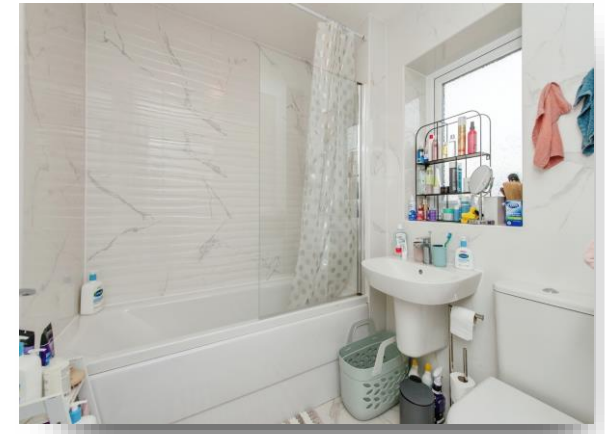


Orchid Mews, Castleford WF10 5ZQ

welcome to

Orchid Mews, Castleford

MOVING ON UP? At a guide price of £280,000 - £290,000 this DETACHED home is READY TO MOVE IN TO and includes THREE good size bedrooms, an EN-SUITE, OFF STREET PARKING and a GARAGE! Perfect for the family buyer, this FANTASTIC property is now READY FOR YOU TO VIEW!



Entrance Hall

Having the entrance door to the front aspect.

Dining Kitchen

8' 8" max x 13' 6" max (2.64m max x 4.11m max)

Comprising of a modern fitted kitchen with a range of both wall and base units with complimentary work surfaces over. Includes a stainless steel sink and drainer, an electric oven and an electric hob with matching splash back and a cooker hood unit over. Also includes an integrated fridge freezer and a double glazed window to the front.

Lounge

13' 8" max x 16' 8" max (4.17m max x 5.08m max)

Having double glazed patio doors to the rear aspect.

Utility Room

Having plumbing for a washing machine and a double glazed window to the rear.

W.C

Equipped with a wash hand basin, a low level flush w.c, a gas central heating radiator and a double glazed window to the rear aspect.

First Floor Landing

With stairs rising from the ground floor and having a built in storage cupboard, a double glazed window to the rear and an access hatch to the part boarded loft.

Bedroom One

11' 6" max x 7' 9" max (3.51m max x 2.36m max)

Double glazed window to the front and a gas central heating radiator.

En-Suite

Equipped with a shower cubicle, a wash hand basin, a low level flush w.c, a heated towel rail and a double glazed window to the side.

Bedroom Two

8' 6" max plus wardrobe x 10' 8" max (2.59m max plus wardrobe x 3.25m max)

Double glazed window to the rear. fitted wardrobe and a gas central heating radiator.

Bedroom Three

8' 6" max plus wardrobe x 10' 8" max (2.59m max plus wardrobe x 3.25m max)

Double glazed window to the front, fitted wardrobe and a gas central heating radiator.

House Bathroom

Comprising of a three piece bathroom suite which includes a bath with a shower over, a wash hand basin and a low level flush w.c. Also includes a heated towel rail and a double glazed window to the rear aspect.

Exterior

Externally the property has an open garden to the front aspect with lawns and a driveway leading to the integral garage. To the rear is an enclosed garden space with a patio seating area, lawn, a garden shed, power points and gated access to the side.



view this property online williamhbrown.co.uk/Property/CAF112829



welcome to

Orchid Mews, Castleford

- Guide Price £280,000 - £290,000
- Detached Family Home
- Three Good Size Bedrooms
- En-Suite & Ground Floor W.C
- Modern & Well Presented

Tenure: Freehold EPC Rating: B

guide price

£280,000 - £290,000



Please note the marker reflects the postcode not the actual property

view this property online williamhbrown.co.uk/Property/CAF112829



Property Ref:
CAF112829 - 0002

1. MONEY LAUNDERING REGULATIONS Intending purchasers will be asked to produce identification documentation at a later stage and we would ask for your co-operation in order that there is no delay in agreeing the sale. 2. These particulars do not constitute part or all of an offer or contract. 3. The measurements indicated are supplied for guidance only and as such must be considered incorrect. Potential buyers are advised to recheck measurements before committing to any expense. 4. We have not tested any apparatus, equipment, fixtures or services and it is in the buyers interest to check the working condition of any appliances. 5. Where an EPC, or a Home Report (Scotland only) is held for this property, it is available for inspection at the branch by appointment. If you require a printed version of a Home Report, you will need to pay a reasonable production charge reflecting printing and other costs. 6. We are not able to offer an opinion either written or verbal on the content of these reports and this must be obtained from your legal representative. 7. Whilst we take care in preparing these reports, a buyer should ensure that his/her legal representative confirms as soon as possible all matters relating to title including the extent and boundaries of the property and other important matters before exchange of contracts.

William H Brown is a trading name of Sequence (UK) Limited which is registered in England and Wales under company number 4268443, Registered Office is Cumbria House, 16-20 Hockliffe Street, Leighton Buzzard, Bedfordshire, LU7 1GN. VAT Registration Number is 500 2481 05.



william h brown



01977 512628



castleford@williamhbrown.co.uk



10 Bank Street, CASTLEFORD, West Yorkshire,
WF10 1HZ



williamhbrown.co.uk