



**Roosevelt Court, Augustus Road, London SW19 6EL**



**welcome to**

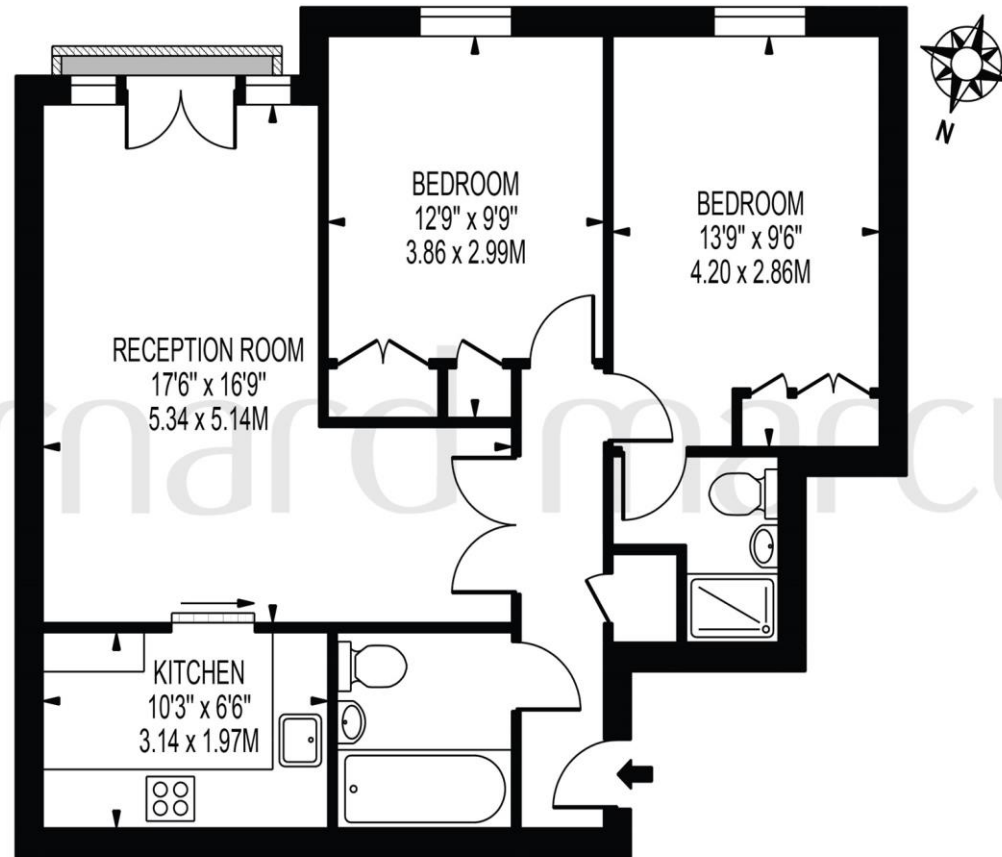
**Roosevelt Court Augustus Road, London**

Offered to the market in immaculate condition is this share of freehold apartment in a private development. With two bedrooms, two bathrooms, allocated parking and communal gardens.



## ROOSEVELT COURT

APPROXIMATE GROSS INTERNAL FLOOR AREA: 685 SQ FT - 63.64 SQ M



SECOND FLOOR  
FOR ILLUSTRATION PURPOSES ONLY

THIS FLOOR PLAN SHOULD BE USED AS A GENERAL OUTLINE FOR GUIDANCE ONLY AND DOES NOT CONSTITUTE IN WHOLE OR IN PART AN OFFER OR CONTRACT.  
ANY INTENDING PURCHASER OR LESSEE SHOULD SATISFY THEMSELVES BY INSPECTION, SEARCHES, ENQUIRIES AND FULL SURVEY AS TO THE CORRECTNESS OF EACH STATEMENT.  
ANY AREAS, MEASUREMENTS OR DISTANCES QUOTED ARE APPROXIMATE AND SHOULD NOT BE USED TO VALUE A PROPERTY OR BE THE BASIS OF ANY SALE OR LET.

Offered to the market in immaculate condition is this share of freehold apartment in a private development.

Situated on the second floor, the apartment comprises a modern fully fitted kitchen, a bright and airy reception with room for dining, a Juliette balcony over looking the well maintained communal gardens, two double bedrooms and two bathrooms. Externally the property also benefits from allocated parking.

Roosevelt Court is set back from the road & well located for the shops, cafes and restaurants of Southfields Village. Wimbledon Park and Wimbledon Common are just a short walk away and there are excellent transport links into London or out to Surrey.

welcome to

## Roosevelt Court Augustus Road, London

- Share of Freehold
- Two Bedrooms
- Two Bathrooms
- Allocated Parking
- Juliette Balcony

Tenure: Leasehold EPC Rating: C

This is a Leasehold property with details as follows; Term of Lease 999 years from 24 Jun 2016. Should you require further information please contact the branch. Please Note additional fees could be incurred for items such as Leasehold packs.

**£585,000**



Please note the marker reflects the postcode not the actual property

**view this property online** [barnardmarcus.co.uk/Property/SFS106559](https://barnardmarcus.co.uk/Property/SFS106559)



Property Ref:  
SFS106559 - 0007

1. MONEY LAUNDERING REGULATIONS Intending purchasers will be asked to produce identification documentation at a later stage and we would ask for your co-operation in order that there is no delay in agreeing the sale. 2. These particulars do not constitute part or all of an offer or contract. 3. The measurements indicated are supplied for guidance only and as such must be considered incorrect. Potential buyers are advised to recheck measurements before committing to any expense. 4. We have not tested any apparatus, equipment, fixtures or services and it is in the buyers interest to check the working condition of any appliances. 5. Where an EPC, or a Home Report (Scotland only) is held for this property, it is available for inspection at the branch by appointment. If you require a printed version of a Home Report, you will need to pay a reasonable production charge reflecting printing and other costs. 6. We are not able to offer an opinion either written or verbal on the content of these reports and this must be obtained from your legal representative. 7. Whilst we take care in preparing these reports, a buyer should ensure that his/her legal representative confirms as soon as possible all matters relating to title including the extent and boundaries of the property and other important matters before exchange of contracts.



barnard marcus



**020 8874 4106**



[Southfields@barnardmarcus.co.uk](mailto:Southfields@barnardmarcus.co.uk)



245 Wimbledon Park Road, Southfields,  
LONDON, SW18 5RJ



**[barnardmarcus.co.uk](https://barnardmarcus.co.uk)**