



Swanton Gardens, London SW19 6BL

welcome to
Swanton Gardens, London

A third floor flat offering spacious accommodation and ample storage space.

The property offers two double bedrooms which are serviced by a bathroom and separate wc, kitchen and living/dining room with balcony off.

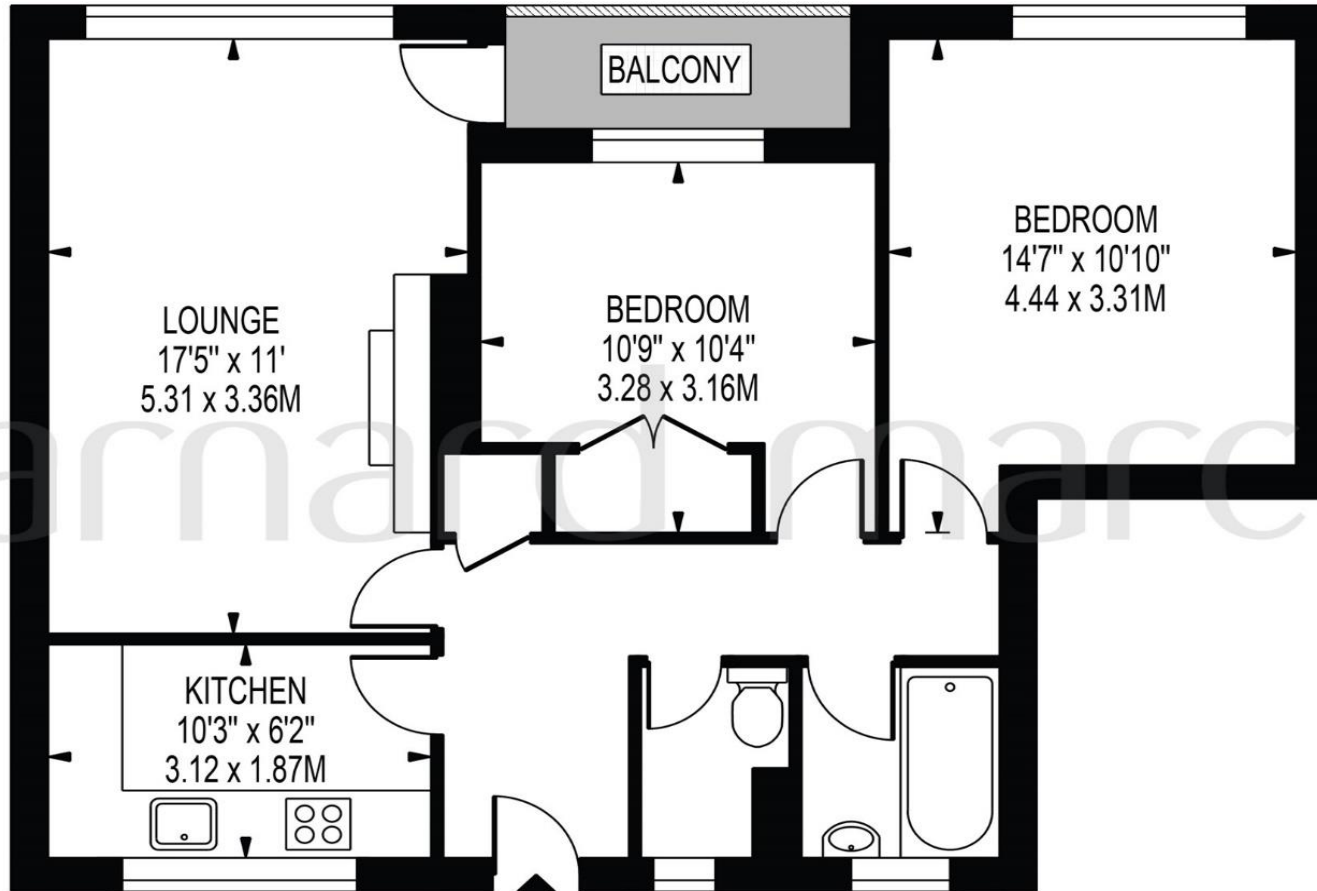
Swanton Gardens is ideally situated for local shops and Southfields Village with its various shopping and transport facilities including the District Line tube station. Wimbledon Park and Wimbledon Common with their various recreational facilities are also within access.

Offered to the sales market with the added benefit of no onward chain, an internal viewing is highly recommended.



SWANTON GARDENS

APPROXIMATE GROSS INTERNAL FLOOR AREA: 663 SQ FT - 61.59 SQ M



↑
THIRD FLOOR

FOR ILLUSTRATION PURPOSES ONLY

THIS FLOOR PLAN SHOULD BE USED AS A GENERAL OUTLINE FOR GUIDANCE ONLY AND DOES NOT CONSTITUTE IN WHOLE OR IN PART AN OFFER OR CONTRACT. ANY INTENDING PURCHASER OR LESSEE SHOULD SATISFY THEMSELVES BY INSPECTION, SEARCHES, ENQUIRIES AND FULL SURVEY AS TO THE CORRECTNESS OF EACH STATEMENT. ANY AREAS, MEASUREMENTS OR DISTANCES QUOTED ARE APPROXIMATE AND SHOULD NOT BE USED TO VALUE A PROPERTY OR BE THE BASIS OF ANY SALE OR LET.

welcome to

Swanton Gardens, London

- Two Double Bedrooms
- Balcony
- No Chain
- Over 650 sqft
- Excellent Transport Links

Tenure: Leasehold EPC Rating: C

£350,000



Please note the marker reflects the postcode not the actual property

view this property online barnardmarcus.co.uk/Property/SFS106053

This is a Leasehold property. We are awaiting further details about the Term of the lease. For further information please contact the branch. Please note additional fees could be incurred for items such as Leasehold packs.



Property Ref:
SFS106053 - 0003

1. MONEY LAUNDERING REGULATIONS Intending purchasers will be asked to produce identification documentation at a later stage and we would ask for your co-operation in order that there is no delay in agreeing the sale. 2. These particulars do not constitute part or all of an offer or contract. 3. The measurements indicated are supplied for guidance only and as such must be considered incorrect. Potential buyers are advised to recheck measurements before committing to any expense. 4. We have not tested any apparatus, equipment, fixtures or services and it is in the buyers interest to check the working condition of any appliances. 5. Where an EPC, or a Home Report (Scotland only) is held for this property, it is available for inspection at the branch by appointment. If you require a printed version of a Home Report, you will need to pay a reasonable production charge reflecting printing and other costs. 6. We are not able to offer an opinion either written or verbal on the content of these reports and this must be obtained from your legal representative. 7. Whilst we take care in preparing these reports, a buyer should ensure that his/her legal representative confirms as soon as possible all matters relating to title including the extent and boundaries of the property and other important matters before exchange of contracts.

Barnard Marcus is a trading name of Sequence (UK) Limited which is registered in England and Wales under company number 4268443, Registered Office is Cumbria House, 16-20 Hockliffe Street, Leighton Buzzard, Bedfordshire, LU7 1GN. VAT Registration Number is 500 2481 05.



barnard marcus



020 8874 4106



southfields@barnardmarcus.co.uk



245 Wimbledon Park Road, Southfields,
LONDON, SW18 5RJ



barnardmarcus.co.uk