



Arboreta Close, South Croydon CR2 0PD

welcome to
Arboreta Close, South Croydon

A collection of just 9 luxury new homes, situated in a sought-after location near Purley Oaks Station. This exceptional project comprises of three detached houses and six spacious apartments; meticulously designed to meet the highest standards of modern comfort and style

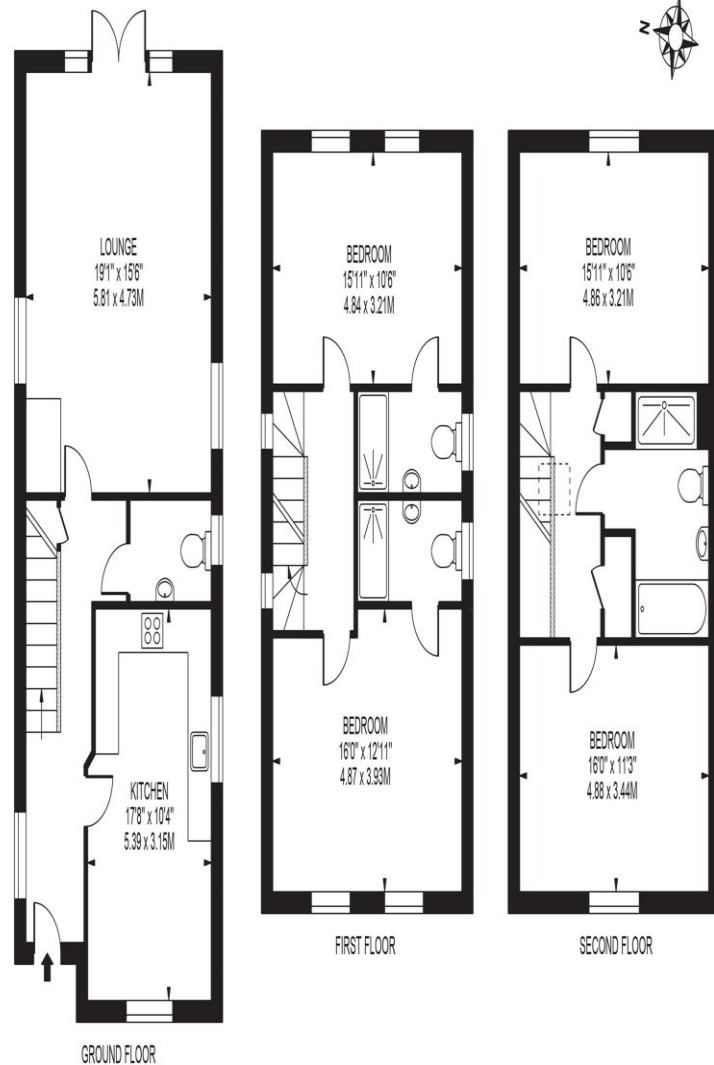
This beautifully presented new build home on a quiet close just off Beech Avenue, offers a perfect blend of contemporary design and practical living. Set in a sought-after residential area of Sanderstead, the property enjoys a peaceful suburban setting while remaining within easy reach of excellent local amenities, reputable schools, and convenient transport links to central London and surrounding areas.

The house features four spacious double bedrooms, ideal for growing families or those who require additional space for guests or working from home. Three modern bathrooms, including two stylish en-suites, provide both comfort and convenience for busy households.



ARBORETA CLOSE

APPROXIMATE GROSS INTERNAL FLOOR AREA: 1724 SQ FT - 160.16 SQ M



FOR ILLUSTRATION PURPOSES ONLY

THIS FLOOR PLAN SHOULD BE USED AS A GENERAL OUTLINE FOR GUIDANCE ONLY AND DOES NOT CONSTITUTE IN WHOLE OR IN PART AN OFFER OR CONTRACT. ANY INTENDING PURCHASER OR LESSEE SHOULD SATISFY THEMSELVES BY INSPECTION, SEARCHES, ENQUIRIES AND FULL SURVEY AS TO THE CORRECTNESS OF EACH STATEMENT. ANY AREAS, MEASUREMENTS OR DISTANCES QUOTED ARE APPROXIMATE AND SHOULD NOT BE USED TO VALUE A PROPERTY OR BE THE BASIS OF ANY SALE OR LET.



The generous lounge diner is perfect for entertaining or relaxing with family, with ample room for both dining and living zones. A separate, fully fitted kitchen offers a dedicated space for cooking, complete with high-quality appliances and a sleek contemporary finish. Outside, a private garden offers a tranquil retreat, ideal for summer gatherings or unwinding after a long day. The property also benefits from two off-street parking spaces, a rare and valuable feature in this popular area.

Beech Avenue is well-positioned for access to both the open green spaces of nearby parks. It's within proximity to Purley Oaks and Sanderstead train stations, offering fast connections into London Bridge and Victoria, making this home an excellent choice for commuters and families alike.

welcome to

Arboreta Close, South Croydon

- New Build - 10 Years BuildZone Warranty
- Four Double Bedrooms
- Three Bathrooms (Two En-Suite)
- Generous Lounge/Diner
- Seperate Kitchen

Tenure: Freehold EPC Rating: B
Council Tax Band: G

from

£750,000



Please note the marker reflects the
postcode not the actual property

view this property online barnardmarcus.co.uk/Property/SAN107772



Property Ref:
SAN107772 - 0002

1. MONEY LAUNDERING REGULATIONS Intending purchasers will be asked to produce identification documentation at a later stage and we would ask for your co-operation in order that there is no delay in agreeing the sale. 2. These particulars do not constitute part or all of an offer or contract. 3. The measurements indicated are supplied for guidance only and as such must be considered incorrect. Potential buyers are advised to recheck measurements before committing to any expense. 4. We have not tested any apparatus, equipment, fixtures or services and it is in the buyers interest to check the working condition of any appliances. 5. Where an EPC, or a Home Report (Scotland only) is held for this property, it is available for inspection at the branch by appointment. If you require a printed version of a Home Report, you will need to pay a reasonable production charge reflecting printing and other costs. 6. We are not able to offer an opinion either written or verbal on the content of these reports and this must be obtained from your legal representative. 7. Whilst we take care in preparing these reports, a buyer should ensure that his/her legal representative confirms as soon as possible all matters relating to title including the extent and boundaries of the property and other important matters before exchange of contracts.

Barnard Marcus is a trading name of Sequence (UK) Limited which is registered in England and Wales under company number 4268443, Registered Office is Cumbria House, 16-20 Hockliffe Street, Leighton Buzzard, Bedfordshire, LU7 1GN. VAT Registration Number is 500 2481 05.



barnard marcus



020 8651 6363



sanderstead@barnardmarcus.co.uk



Station Approach, Sanderstead, SOUTH
CROYDON, Surrey, CR2 0PL



barnardmarcus.co.uk