



PORTFOLIO
from



barnard marcus

Ash Villas, Bradmore Way, CR5

Ash Villas, Bradmore Way. Coulsdon

Discover Ash Villas, a collection of stunning new-build homes located in the heart of Old Coulsdon. Designed with contemporary lifestyles in mind, this exceptional development offers a mix of 2, 3 and 4 bedroom properties, crafted to the highest standards of design, comfort, and sustainability.



Each home boasts thoughtfully designed interiors with high-quality finishes, open-plan living spaces, and abundant natural light. Fully fitted Nordic kitchens featuring premium Hotpoint appliances and 'antique bronze' countertops. Nordic Bathrooms with white sanitaryware combined with matte black fixtures and Boydens tiles. Built with sustainability at the forefront, these homes include energy-efficient systems, ensuring lower utility costs. Enjoy private gardens, balconies, or terraces - perfect for relaxing and entertaining. Ideally situated near Coulsdon South Station and Coulsdon Town Station which provides fantastic links into London within 30 minutes, there are an array of top performing schools/ colleges nearby to choose from. The development is surrounded by greenery and offers stunning downland views of Farthing Downs. Coulsdon provides an array of convenience stores, supermarkets such as Waitrose and Aldi, restaurants with a variety of cuisines and coffee shops.





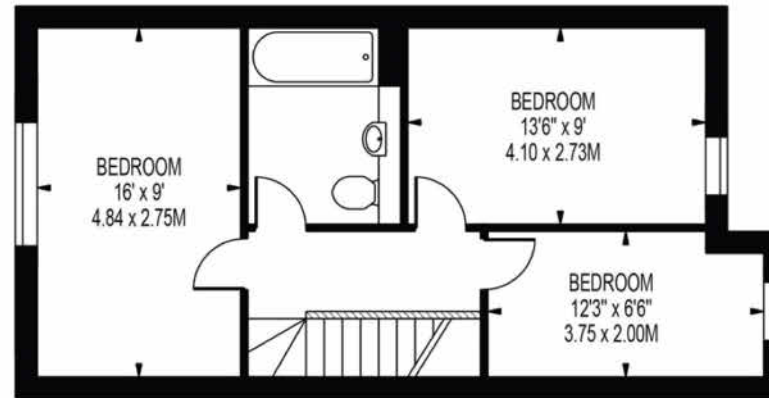
Ash Villas offers more than just a home; it's a lifestyle. With thoughtfully designed communal spaces and a vibrant community atmosphere, this is the perfect place to put down roots. This sought-after development offers stylish, modern living in the heart of Old Coulsdon.

Enjoy open plan interiors filled with natural light, a sleek Nordic Kitchen with Hotpoint Appliances and contemporary bathrooms.

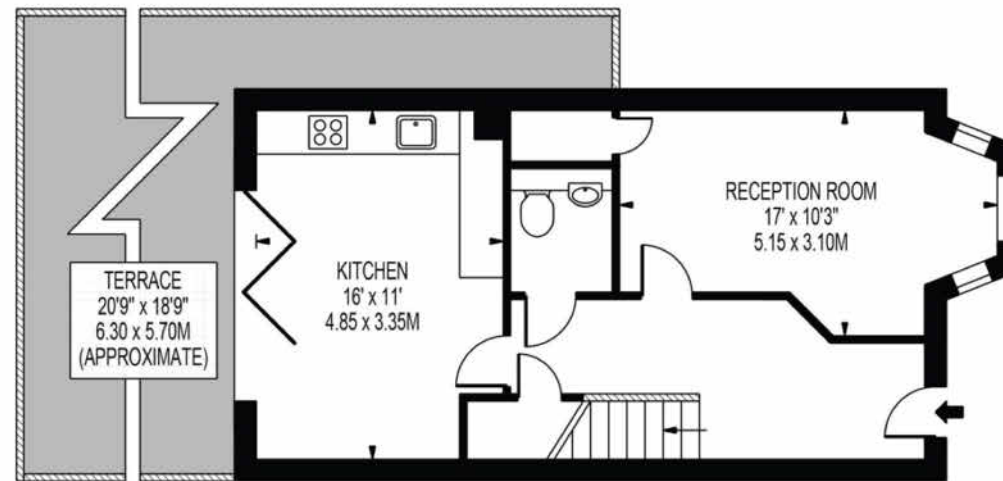


ASH VILLAS

APPROXIMATE GROSS INTERNAL FLOOR AREA: 984 SQ FT - 91.38 SQ M



FIRST FLOOR



GROUND FLOOR

FOR ILLUSTRATION PURPOSES ONLY

THIS FLOOR PLAN SHOULD BE USED AS A GENERAL OUTLINE FOR GUIDANCE ONLY AND DOES NOT CONSTITUTE IN WHOLE OR IN PART AN OFFER OR CONTRACT. ANY INTENDING PURCHASER OR LESSEE SHOULD SATISFY THEMSELVES BY INSPECTION, SEARCHES, ENQUIRIES AND FULL SURVEY AS TO THE CORRECTNESS OF EACH STATEMENT. ANY AREAS, MEASUREMENTS OR DISTANCES QUOTED ARE APPROXIMATE AND SHOULD NOT BE USED TO VALUE A PROPERTY OR BE THE BASIS OF ANY SALE OR LET.

welcome to Ash Villas, Bradmore Way, CR5

DISCLAIMER

Please be aware that the images in this brochure are of our show home. The floor plan in this brochure is of our Three Bedroom End of Terraced House.

All apartments in this development are leasehold properties. The terraced houses are freehold properties.

PRICES FROM

£375,000

- 2, 3 & 4 Exceptional New Build Homes
- Stunning Nordic Kitchens
- Stunning Nordic Bathrooms
- Amazing Views Over Farthing Downs

Tenure: Leasehold

EPC Rating: Exempt



To find out more information or to arrange a viewing call

020 8651 6363

or email Sanderstead@barnardmarcus.co.uk

Station Approach, Sanderstead, South Croydon, Surrey CR2 0PL
barnardmarcus.co.uk

1. MONEY LAUNDERING REGULATIONS Intending purchasers will be asked to produce identification documentation at a later stage and we would ask for your co-operation in order that there is no delay in agreeing the sale. 2. These particulars do not constitute part or all of an offer or contract. 3. The measurements indicated are supplied for guidance only and as such must be considered incorrect. Potential buyers are advised to recheck measurements before committing to any expense. 4. We have not tested any apparatus, equipment, fixtures or services and it is in the buyers interest to check the working condition of any appliances. 5. Where an EPC, or a Home Report (Scotland only) is held for this property, it is available for inspection at the branch by appointment. If you require a printed version of a Home Report, you will need to pay a reasonable production charge reflecting printing and other costs. 6. We are not able to offer an opinion either written or verbal on the content of these reports and this must be obtained from your legal representative. 7. Whilst we take care in preparing these reports, a buyer should ensure that his/her legal representative confirms as soon as possible all matters relating to title including the extent and boundaries of the property and other important matters before exchange of contracts.

Trading name of Sequence (UK) Limited which is registered in England and Wales under company number 4268443, Registered Office is Cumbria House, 16-20 Hockliffe Street, Leighton Buzzard, Bedfordshire, LU7 1GN. VAT Registration Number is 500 2481 05.

