



barnard marcus

**Crestway, Putney, London, SW15 5DD**

**welcome to**  
**Crestway, Putney, London**

Occupying a generous corner plot set back from the road is this three bedroom house offered to the market with no onward chain. Comprising almost 1,100 sq ft of internal accommodation the property comprises a number of bright and airy rooms, with the exciting potential for further extension (STPP) given the fantastic plot that the house sits on. Downstairs there is a living room to the front, a dining area, a kitchen diner, utility room, and a lovely conservatory that is double-glazed and has a reflecting roof - you can't see into it, and it reflects the sunlight. The accommodation is then completed on the first floor with three bedrooms and a shower room, and there is access to a decent loft space. There is a large rear/side garden which is perfect for a young family.

Crestway offers easy access to Putney Heath, Queen Mary's Hospital, the University of Roehampton, and also Central Putney, as well as the A3 for a quick road link out of London.

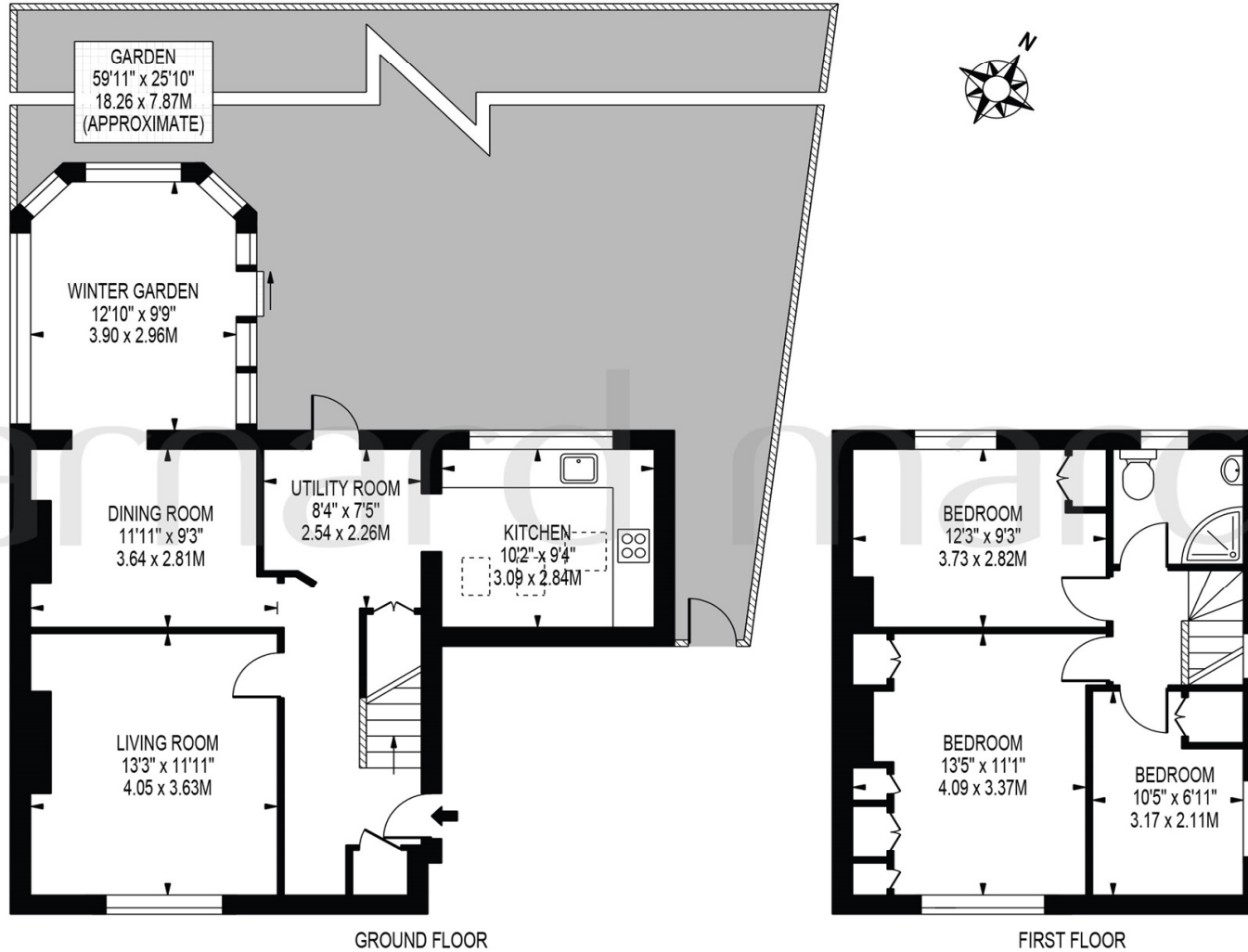
Viewings highly advised,



# CRESTWAY

APPROXIMATE TOTAL INTERNAL FLOOR AREA: 1091 SQ FT - 101.40 SQ M  
(INCLUDING WINTER GARDEN)

APPROXIMATE GROSS INTERNAL AREA OF WINTER GARDEN: 122 SQ FT - 11.34 SQ M



GROUND FLOOR

FIRST FLOOR

FOR ILLUSTRATION PURPOSES ONLY

THIS FLOOR PLAN SHOULD BE USED AS A GENERAL OUTLINE FOR GUIDANCE ONLY AND DOES NOT CONSTITUTE IN WHOLE OR IN PART AN OFFER OR CONTRACT.  
ANY INTENDING PURCHASER OR LESSEE SHOULD SATISFY THEMSELVES BY INSPECTION, SEARCHES, ENQUIRIES AND FULL SURVEY AS TO THE CORRECTNESS OF EACH STATEMENT.  
ANY AREAS, MEASUREMENTS OR DISTANCES QUOTED ARE APPROXIMATE AND SHOULD NOT BE USED TO VALUE A PROPERTY OR BE THE BASIS OF ANY SALE OR LET.