



Bushby Avenue, Broxbourne EN10 6QE

welcome to

Bushby Avenue, Broxbourne

William H Brown are delighted to bring to the market this stunning and extended three double bedroom family home situated in a popular Broxbourne location. An internal viewing is a must!

Accommodation Comprises Of:

Entrance Hall

Radiator, wood flooring.

Lounge

13' 5" x 12' 2" (4.09m x 3.71m)

Fireplace, radiator, patio doors.

dining room

19' 10" x 10' 6" (6.05m x 3.20m)

Double glazed bay window to front aspect, fireplace, shutter blinds, laminate floor.

Kitchen

16' 11" max x 13' 3" max (5.16m max x 4.04m max)

Double glazed door to side aspect, a range of wall and base units with complimenting worktops, integrated double oven, tiled floor, hob, extractor fan, radiator, integrated dishwasher, integrated fridge, seperate freezer, wine cooler.

Utility Room

5' 3" x 4' 10" (1.60m x 1.47m)

Double glazed window to side aspect, radiator, sink unit.

Landing

Access to the loft, skylight.

Bedroom 1

13' 1" x 9' 2" (3.99m x 2.79m)

Two double glazed windows to front aspect, radiator, shutter blinds, laminate floor.

En-Suite

Double glazed window to side aspect, walk in shower cubicle, chrome heated radiator, tiled floor, tiled walls, wash hand basin, wc.

Bedroom 2

12' 6" x 11' 8" (3.81m x 3.56m)

Double glazed window to rear aspect, shutter blinds, fitted wardrobe, laminate floor, radiator, storage cupboard.

Bedroom 3

11' max x 10' 6" max (3.35m max x 3.20m max)

Double glazed window to front aspect, shutter blinds, laminate floor, radiator, fitted wardrobes.

Bathroom

Two double glazed windows to rear aspect, tiled floor, tiled walls, paneled bath, walk in shower cubicle, wc, wash hand basin, chrome heated radiator.

Exterior

Front Garden

To the front of the property is a driveway, garage.

Rear Garden

To the rear of the property is lawn area with shrubs, patio area, two sheds with light/power, outside water tap, complemented with garden lighting.





view this property online williamhbrown.co.uk/Property/BRX109424



welcome to

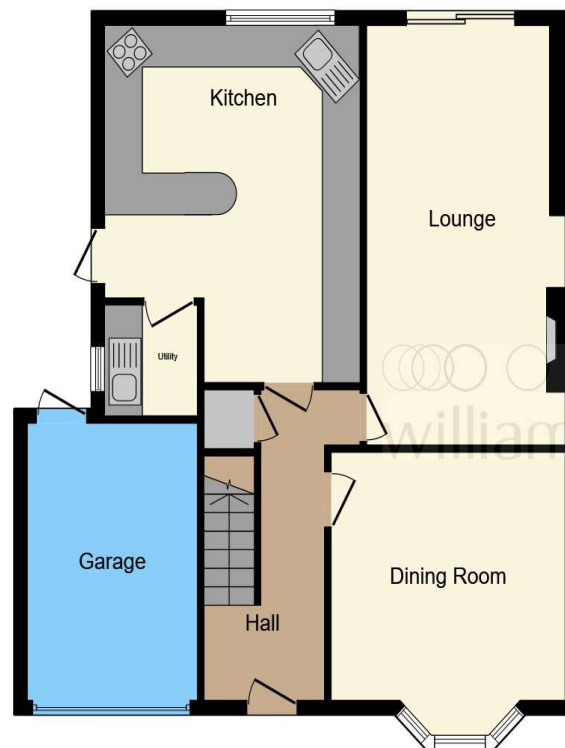
Bushby Avenue, Broxbourne

- Three double bedrooms
- Semi detached
- Stunning rear south facing garden
- Close to highly regarded schools
- Driveway and garage

Tenure: Freehold EPC Rating: D

Council Tax Band: E

£675,000



Ground Floor



First Floor

Total floor area 132.6 m² (1,428 sq.ft.) approx

This floor plan is for illustrative purposes only. It is not drawn to scale. Any measurements, floor areas (including any total floor area), openings and orientation are approximate. No details are guaranteed, they cannot be relied upon for any purpose and they do not form part of any agreement. No liability is taken for any error, omission or misstatement. A party must rely upon its own inspection(s). Powered by www.focalagent.com

view this property online williamhbrown.co.uk/Property/BRX109424



Property Ref:
BRX109424 - 0004

1. MONEY LAUNDERING REGULATIONS Intending purchasers will be asked to produce identification documentation at a later stage and we would ask for your co-operation in order that there is no delay in agreeing the sale. 2. These particulars do not constitute part or all of an offer or contract. 3. The measurements indicated are supplied for guidance only and as such must be considered incorrect. Potential buyers are advised to recheck measurements before committing to any expense. 4. We have not tested any apparatus, equipment, fixtures or services and it is in the buyers interest to check the working condition of any appliances. 5. Where an EPC, or a Home Report (Scotland only) is held for this property, it is available for inspection at the branch by appointment. If you require a printed version of a Home Report, you will need to pay a reasonable production charge reflecting printing and other costs. 6. We are not able to offer an opinion either written or verbal on the content of these reports and this must be obtained from your legal representative. 7. Whilst we take care in preparing these reports, a buyer should ensure that his/her legal representative confirms as soon as possible all matters relating to title including the extent and boundaries of the property and other important matters before exchange of contracts.

William H Brown is a trading name of Sequence (UK) Limited which is registered in England and Wales under company number 4268443, Registered Office is Cumbria House, 16-20 Hockliffe Street, Leighton Buzzard, Bedfordshire, LU7 1GN. VAT Registration Number is 500 2481 05.


william h brown



01992 464174



Broxbourne@williamhbrown.co.uk



47 High Road, BROXBOURNE, Hertfordshire,
EN10 7HX



williamhbrown.co.uk



Bushby Avenue, Broxbourne EN10 6QE

welcome to

Bushby Avenue, Broxbourne

William H Brown are delighted to bring to the market this stunning and extended three double bedroom family home situated in a popular Broxbourne location. An internal viewing is a must!

Accommodation Comprises Of:

Entrance Hall

Radiator, wood flooring.

Lounge

13' 5" x 12' 2" (4.09m x 3.71m)

Fireplace, radiator, patio doors.

dining room

19' 10" x 10' 6" (6.05m x 3.20m)

Double glazed bay window to front aspect, fireplace, shutter blinds, laminate floor.

Kitchen

16' 11" max x 13' 3" max (5.16m max x 4.04m max)

Double glazed door to side aspect, a range of wall and base units with complimenting worktops, integrated double oven, tiled floor, hob, extractor fan, radiator, integrated dishwasher, integrated fridge, seperate freezer, wine cooler.

Utility Room

5' 3" x 4' 10" (1.60m x 1.47m)

Double glazed window to side aspect, radiator, sink unit.

Landing

Access to the loft, skylight.

Bedroom 1

13' 1" x 9' 2" (3.99m x 2.79m)

Two double glazed windows to front aspect, radiator, shutter blinds, laminate floor.

En-Suite

Double glazed window to side aspect, walk in shower cubicle, chrome heated radiator, tiled floor, tiled walls, wash hand basin, wc.

Bedroom 2

12' 6" x 11' 8" (3.81m x 3.56m)

Double glazed window to rear aspect, shutter blinds, fitted wardrobe, laminate floor, radiator, storage cupboard.

Bedroom 3

11' max x 10' 6" max (3.35m max x 3.20m max)

Double glazed window to front aspect, shutter blinds, laminate floor, radiator, fitted wardrobes.

Bathroom

Two double glazed windows to rear aspect, tiled floor, tiled walls, paneled bath, walk in shower cubicle, wc, wash hand basin, chrome heated radiator.

Exterior

Front Garden

To the front of the property is a driveway, garage.

Rear Garden

To the rear of the property is lawn area with shrubs, patio area, two sheds with light/power, outside water tap, complemented with garden lighting.





view this property online williamhbrown.co.uk/Property/BRX109424



welcome to

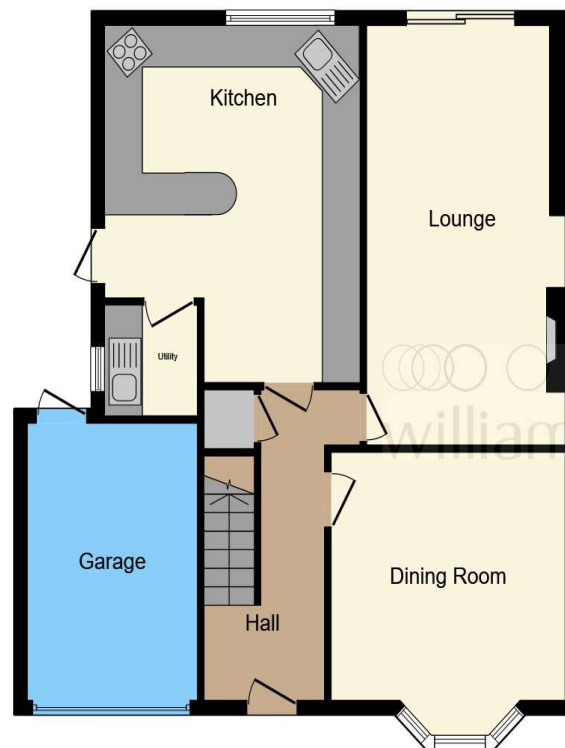
Bushby Avenue, Broxbourne

- Three double bedrooms
- Semi detached
- Stunning rear south facing garden
- Close to highly regarded schools
- Driveway and garage

Tenure: Freehold EPC Rating: D

Council Tax Band: E

£675,000



Ground Floor



First Floor

Total floor area 132.6 m² (1,428 sq.ft.) approx

This floor plan is for illustrative purposes only. It is not drawn to scale. Any measurements, floor areas (including any total floor area), openings and orientation are approximate. No details are guaranteed, they cannot be relied upon for any purpose and they do not form part of any agreement. No liability is taken for any error, omission or misstatement. A party must rely upon its own inspection(s). Powered by www.focalagent.com

view this property online williamhbrown.co.uk/Property/BRX109424



Property Ref:
BRX109424 - 0004

1. MONEY LAUNDERING REGULATIONS Intending purchasers will be asked to produce identification documentation at a later stage and we would ask for your co-operation in order that there is no delay in agreeing the sale. 2. These particulars do not constitute part or all of an offer or contract. 3. The measurements indicated are supplied for guidance only and as such must be considered incorrect. Potential buyers are advised to recheck measurements before committing to any expense. 4. We have not tested any apparatus, equipment, fixtures or services and it is in the buyers interest to check the working condition of any appliances. 5. Where an EPC, or a Home Report (Scotland only) is held for this property, it is available for inspection at the branch by appointment. If you require a printed version of a Home Report, you will need to pay a reasonable production charge reflecting printing and other costs. 6. We are not able to offer an opinion either written or verbal on the content of these reports and this must be obtained from your legal representative. 7. Whilst we take care in preparing these reports, a buyer should ensure that his/her legal representative confirms as soon as possible all matters relating to title including the extent and boundaries of the property and other important matters before exchange of contracts.

William H Brown is a trading name of Sequence (UK) Limited which is registered in England and Wales under company number 4268443, Registered Office is Cumbria House, 16-20 Hockliffe Street, Leighton Buzzard, Bedfordshire, LU7 1GN. VAT Registration Number is 500 2481 05.


william h brown



01992 464174



Broxbourne@williamhbrown.co.uk



47 High Road, BROXBOURNE, Hertfordshire,
EN10 7HX



williamhbrown.co.uk



Bushby Avenue, Broxbourne EN10 6QE

welcome to

Bushby Avenue, Broxbourne

William H Brown are delighted to bring to the market this stunning and extended three double bedroom family home situated in a popular Broxbourne location. An internal viewing is a must!

Accommodation Comprises Of:

Entrance Hall

Radiator, wood flooring.

Lounge

13' 5" x 12' 2" (4.09m x 3.71m)

Fireplace, radiator, patio doors.

dining room

19' 10" x 10' 6" (6.05m x 3.20m)

Double glazed bay window to front aspect, fireplace, shutter blinds, laminate floor.

Kitchen

16' 11" max x 13' 3" max (5.16m max x 4.04m max)

Double glazed door to side aspect, a range of wall and base units with complimenting worktops, integrated double oven, tiled floor, hob, extractor fan, radiator, integrated dishwasher, integrated fridge, seperate freezer, wine cooler.

Utility Room

5' 3" x 4' 10" (1.60m x 1.47m)

Double glazed window to side aspect, radiator, sink unit.

Landing

Access to the loft, skylight.

Bedroom 1

13' 1" x 9' 2" (3.99m x 2.79m)

Two double glazed windows to front aspect, radiator, shutter blinds, laminate floor.

En-Suite

Double glazed window to side aspect, walk in shower cubicle, chrome heated radiator, tiled floor, tiled walls, wash hand basin, wc.

Bedroom 2

12' 6" x 11' 8" (3.81m x 3.56m)

Double glazed window to rear aspect, shutter blinds, fitted wardrobe, laminate floor, radiator, storage cupboard.

Bedroom 3

11' max x 10' 6" max (3.35m max x 3.20m max)

Double glazed window to front aspect, shutter blinds, laminate floor, radiator, fitted wardrobes.

Bathroom

Two double glazed windows to rear aspect, tiled floor, tiled walls, paneled bath, walk in shower cubicle, wc, wash hand basin, chrome heated radiator.

Exterior

Front Garden

To the front of the property is a driveway, garage.

Rear Garden

To the rear of the property is lawn area with shrubs, patio area, two sheds with light/power, outside water tap, complemented with garden lighting.





view this property online williamhbrown.co.uk/Property/BRX109424



welcome to

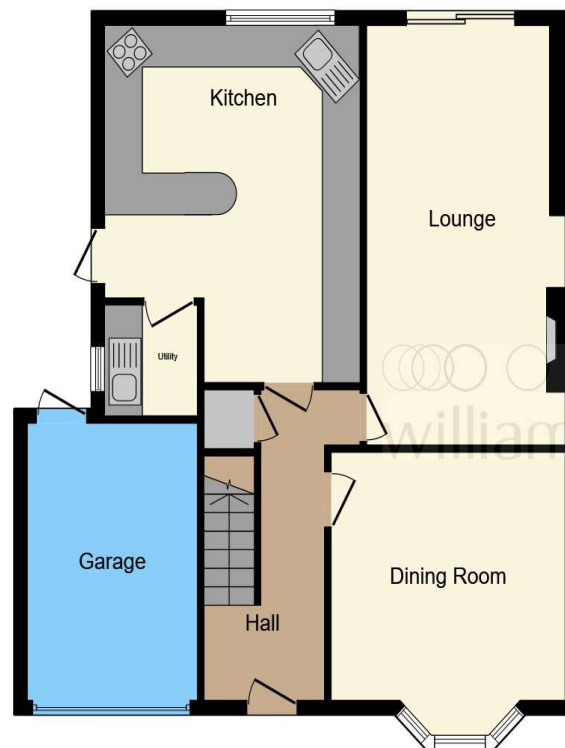
Bushby Avenue, Broxbourne

- Three double bedrooms
- Semi detached
- Stunning rear south facing garden
- Close to highly regarded schools
- Driveway and garage

Tenure: Freehold EPC Rating: D

Council Tax Band: E

£675,000



Ground Floor



First Floor

Total floor area 132.6 m² (1,428 sq.ft.) approx

This floor plan is for illustrative purposes only. It is not drawn to scale. Any measurements, floor areas (including any total floor area), openings and orientation are approximate. No details are guaranteed, they cannot be relied upon for any purpose and they do not form part of any agreement. No liability is taken for any error, omission or misstatement. A party must rely upon its own inspection(s). Powered by www.focalagent.com

view this property online williamhbrown.co.uk/Property/BRX109424



Property Ref:
BRX109424 - 0004

1. MONEY LAUNDERING REGULATIONS Intending purchasers will be asked to produce identification documentation at a later stage and we would ask for your co-operation in order that there is no delay in agreeing the sale. 2. These particulars do not constitute part or all of an offer or contract. 3. The measurements indicated are supplied for guidance only and as such must be considered incorrect. Potential buyers are advised to recheck measurements before committing to any expense. 4. We have not tested any apparatus, equipment, fixtures or services and it is in the buyers interest to check the working condition of any appliances. 5. Where an EPC, or a Home Report (Scotland only) is held for this property, it is available for inspection at the branch by appointment. If you require a printed version of a Home Report, you will need to pay a reasonable production charge reflecting printing and other costs. 6. We are not able to offer an opinion either written or verbal on the content of these reports and this must be obtained from your legal representative. 7. Whilst we take care in preparing these reports, a buyer should ensure that his/her legal representative confirms as soon as possible all matters relating to title including the extent and boundaries of the property and other important matters before exchange of contracts.

William H Brown is a trading name of Sequence (UK) Limited which is registered in England and Wales under company number 4268443, Registered Office is Cumbria House, 16-20 Hockliffe Street, Leighton Buzzard, Bedfordshire, LU7 1GN. VAT Registration Number is 500 2481 05.



william h brown



01992 464174



Broxbourne@williamhbrown.co.uk



47 High Road, BROXBOURNE, Hertfordshire,
EN10 7HX



williamhbrown.co.uk



Bushby Avenue, Broxbourne EN10 6QE

welcome to

Bushby Avenue, Broxbourne

William H Brown are delighted to bring to the market this stunning and extended three double bedroom family home situated in a popular Broxbourne location. An internal viewing is a must!

Accommodation Comprises Of:

Entrance Hall

Radiator, wood flooring.

Lounge

13' 5" x 12' 2" (4.09m x 3.71m)

Fireplace, radiator, patio doors.

dining room

19' 10" x 10' 6" (6.05m x 3.20m)

Double glazed bay window to front aspect, fireplace, shutter blinds, laminate floor.

Kitchen

16' 11" max x 13' 3" max (5.16m max x 4.04m max)

Double glazed door to side aspect, a range of wall and base units with complimenting worktops, integrated double oven, tiled floor, hob, extractor fan, radiator, integrated dishwasher, integrated fridge, seperate freezer, wine cooler.

Utility Room

5' 3" x 4' 10" (1.60m x 1.47m)

Double glazed window to side aspect, radiator, sink unit.

Landing

Access to the loft, skylight.

Bedroom 1

13' 1" x 9' 2" (3.99m x 2.79m)

Two double glazed windows to front aspect, radiator, shutter blinds, laminate floor.

En-Suite

Double glazed window to side aspect, walk in shower cubicle, chrome heated radiator, tiled floor, tiled walls, wash hand basin, wc.

Bedroom 2

12' 6" x 11' 8" (3.81m x 3.56m)

Double glazed window to rear aspect, shutter blinds, fitted wardrobe, laminate floor, radiator, storage cupboard.

Bedroom 3

11' max x 10' 6" max (3.35m max x 3.20m max)

Double glazed window to front aspect, shutter blinds, laminate floor, radiator, fitted wardrobes.

Bathroom

Two double glazed windows to rear aspect, tiled floor, tiled walls, paneled bath, walk in shower cubicle, wc, wash hand basin, chrome heated radiator.

Exterior

Front Garden

To the front of the property is a driveway, garage.

Rear Garden

To the rear of the property is lawn area with shrubs, patio area, two sheds with light/power, outside water tap, complemented with garden lighting.





view this property online williamhbrown.co.uk/Property/BRX109424



welcome to

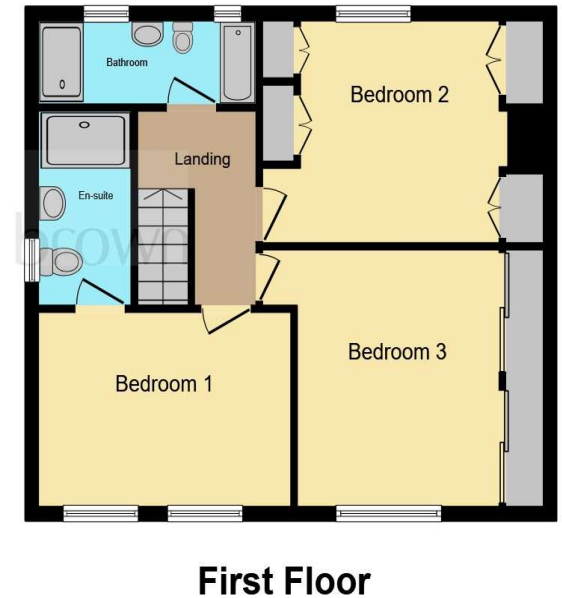
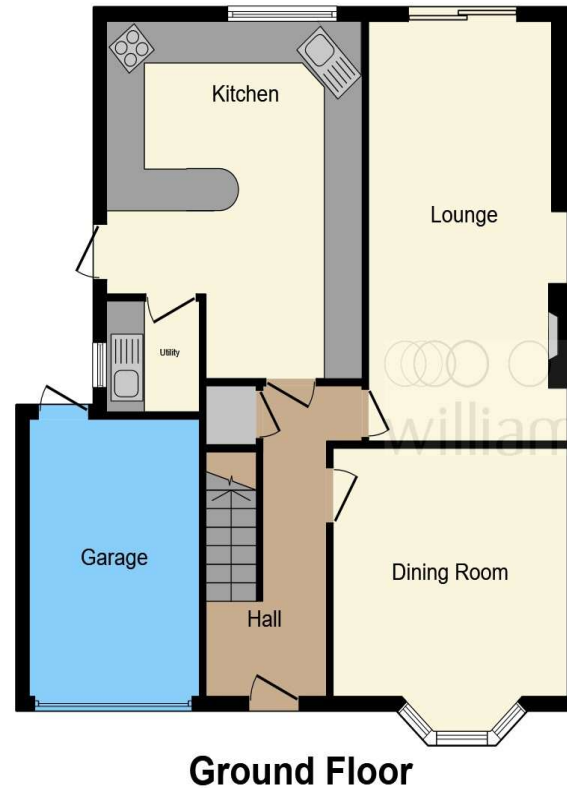
Bushby Avenue, Broxbourne

- Three double bedrooms
- Semi detached
- Stunning rear south facing garden
- Close to highly regarded schools
- Driveway and garage

Tenure: Freehold EPC Rating: D

Council Tax Band: E

£675,000



Total floor area 132.6 m² (1,428 sq.ft.) approx

This floor plan is for illustrative purposes only. It is not drawn to scale. Any measurements, floor areas (including any total floor area), openings and orientation are approximate. No details are guaranteed, they cannot be relied upon for any purpose and they do not form part of any agreement. No liability is taken for any error, omission or misstatement. A party must rely upon its own inspection(s). Powered by www.focalagent.com

view this property online williamhbrown.co.uk/Property/BRX109424



Property Ref:
BRX109424 - 0004

1. MONEY LAUNDERING REGULATIONS Intending purchasers will be asked to produce identification documentation at a later stage and we would ask for your co-operation in order that there is no delay in agreeing the sale. 2. These particulars do not constitute part or all of an offer or contract. 3. The measurements indicated are supplied for guidance only and as such must be considered incorrect. Potential buyers are advised to recheck measurements before committing to any expense. 4. We have not tested any apparatus, equipment, fixtures or services and it is in the buyers interest to check the working condition of any appliances. 5. Where an EPC, or a Home Report (Scotland only) is held for this property, it is available for inspection at the branch by appointment. If you require a printed version of a Home Report, you will need to pay a reasonable production charge reflecting printing and other costs. 6. We are not able to offer an opinion either written or verbal on the content of these reports and this must be obtained from your legal representative. 7. Whilst we take care in preparing these reports, a buyer should ensure that his/her legal representative confirms as soon as possible all matters relating to title including the extent and boundaries of the property and other important matters before exchange of contracts.

William H Brown is a trading name of Sequence (UK) Limited which is registered in England and Wales under company number 4268443, Registered Office is Cumbria House, 16-20 Hockliffe Street, Leighton Buzzard, Bedfordshire, LU7 1GN. VAT Registration Number is 500 2481 05.


william h brown



01992 464174



Broxbourne@williamhbrown.co.uk



47 High Road, BROXBOURNE, Hertfordshire,
EN10 7HX



williamhbrown.co.uk



Bushby Avenue, Broxbourne EN10 6QE

welcome to

Bushby Avenue, Broxbourne

William H Brown are delighted to bring to the market this stunning and extended three double bedroom family home situated in a popular Broxbourne location. An internal viewing is a must!

Accommodation Comprises Of:

Entrance Hall

Radiator, wood flooring.

Lounge

13' 5" x 12' 2" (4.09m x 3.71m)

Fireplace, radiator, patio doors.

dining room

19' 10" x 10' 6" (6.05m x 3.20m)

Double glazed bay window to front aspect, fireplace, shutter blinds, laminate floor.

Kitchen

16' 11" max x 13' 3" max (5.16m max x 4.04m max)

Double glazed door to side aspect, a range of wall and base units with complimenting worktops, integrated double oven, tiled floor, hob, extractor fan, radiator, integrated dishwasher, integrated fridge, seperate freezer, wine cooler.

Utility Room

5' 3" x 4' 10" (1.60m x 1.47m)

Double glazed window to side aspect, radiator, sink unit.

Landing

Access to the loft, skylight.

Bedroom 1

13' 1" x 9' 2" (3.99m x 2.79m)

Two double glazed windows to front aspect, radiator, shutter blinds, laminate floor.

En-Suite

Double glazed window to side aspect, walk in shower cubicle, chrome heated radiator, tiled floor, tiled walls, wash hand basin, wc.

Bedroom 2

12' 6" x 11' 8" (3.81m x 3.56m)

Double glazed window to rear aspect, shutter blinds, fitted wardrobe, laminate floor, radiator, storage cupboard.

Bedroom 3

11' max x 10' 6" max (3.35m max x 3.20m max)

Double glazed window to front aspect, shutter blinds, laminate floor, radiator, fitted wardrobes.

Bathroom

Two double glazed windows to rear aspect, tiled floor, tiled walls, paneled bath, walk in shower cubicle, wc, wash hand basin, chrome heated radiator.

Exterior

Front Garden

To the front of the property is a driveway, garage.

Rear Garden

To the rear of the property is lawn area with shrubs, patio area, two sheds with light/power, outside water tap, complemented with garden lighting.





view this property online williamhbrown.co.uk/Property/BRX109424



welcome to

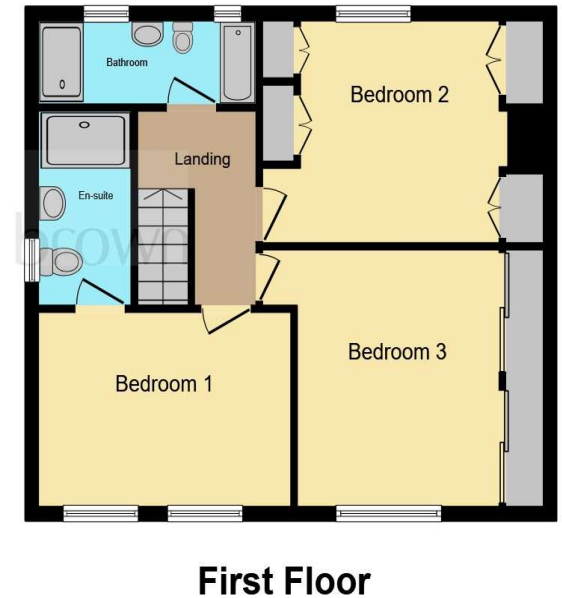
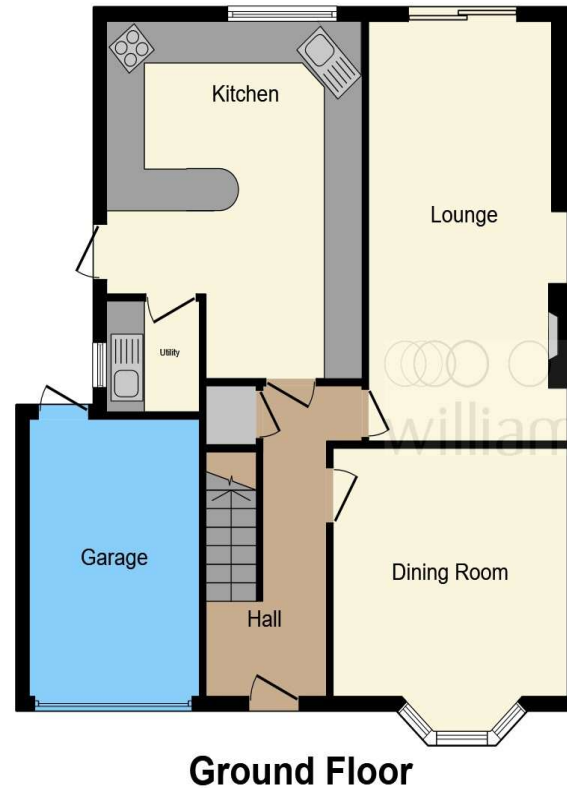
Bushby Avenue, Broxbourne

- Three double bedrooms
- Semi detached
- Stunning rear south facing garden
- Close to highly regarded schools
- Driveway and garage

Tenure: Freehold EPC Rating: D

Council Tax Band: E

£675,000



Total floor area 132.6 m² (1,428 sq.ft.) approx

This floor plan is for illustrative purposes only. It is not drawn to scale. Any measurements, floor areas (including any total floor area), openings and orientation are approximate. No details are guaranteed, they cannot be relied upon for any purpose and they do not form part of any agreement. No liability is taken for any error, omission or misstatement. A party must rely upon its own inspection(s). Powered by www.focalagent.com

view this property online williamhbrown.co.uk/Property/BRX109424



Property Ref:
BRX109424 - 0004

1. MONEY LAUNDERING REGULATIONS Intending purchasers will be asked to produce identification documentation at a later stage and we would ask for your co-operation in order that there is no delay in agreeing the sale. 2. These particulars do not constitute part or all of an offer or contract. 3. The measurements indicated are supplied for guidance only and as such must be considered incorrect. Potential buyers are advised to recheck measurements before committing to any expense. 4. We have not tested any apparatus, equipment, fixtures or services and it is in the buyers interest to check the working condition of any appliances. 5. Where an EPC, or a Home Report (Scotland only) is held for this property, it is available for inspection at the branch by appointment. If you require a printed version of a Home Report, you will need to pay a reasonable production charge reflecting printing and other costs. 6. We are not able to offer an opinion either written or verbal on the content of these reports and this must be obtained from your legal representative. 7. Whilst we take care in preparing these reports, a buyer should ensure that his/her legal representative confirms as soon as possible all matters relating to title including the extent and boundaries of the property and other important matters before exchange of contracts.

William H Brown is a trading name of Sequence (UK) Limited which is registered in England and Wales under company number 4268443, Registered Office is Cumbria House, 16-20 Hockliffe Street, Leighton Buzzard, Bedfordshire, LU7 1GN. VAT Registration Number is 500 2481 05.


william h brown



01992 464174



Broxbourne@williamhbrown.co.uk



47 High Road, BROXBOURNE, Hertfordshire,
EN10 7HX



williamhbrown.co.uk