



**Green Pastures Tatsfield Avenue, Nazeing Waltham Abbey EN9
2HH**

welcome to

Green Pastures Tatsfield Avenue, Nazeing Waltham Abbey

William H Brown are delighted to bring to the market this charming two/three bedroom semi detached bungalow occupying a great plot in the heart of popular Nazeing. An early viewing is a must!

Accommodation Comprises Of: Entrance Hall

Storage cupboard, two radiators.

Lounge

15' 11" x 12' 2" (4.85m x 3.71m)
Fireplace, laminate floor.

Dining Room

10' 2" max x 9' 6" max (3.10m max x 2.90m max)
Double glazed window to rear aspect, patio doors, radiator, laminate floor, double doors to kitchen aspect.

Kitchen

22' 4" max x 10' 6" max (6.81m max x 3.20m max)
Double glazed window to side aspect, double glazed door to rear aspect, sink unit, a range of wall and base units with complimenting worktops, storage cupboard, double glazed window to rear aspect, tiled floor, space for range cooker, integrated dishwasher, space for fridge freezer.

Bedroom 1

16' 5" x 10' 10" (5.00m x 3.30m)
Double glazed window to front aspect, fireplace, fitted wardrobe, radiator, laminate floor.

Bedroom 2

14' 1" max x 10' 2" max (4.29m max x 3.10m max)
Double glazed window to front aspect, laminate floor, radiator.

Bathroom

Two double glazed windows to side aspect, wash hand basin, radiator, tiled floor, tiled walls, paneled bath, wc.

Exterior

Front Garden

To the front of the property is a driveway, side access.

Rear Garden

To the rear of the property is a lawn area, patio area, shed.





view this property online williamhbrown.co.uk/Property/BRX108793



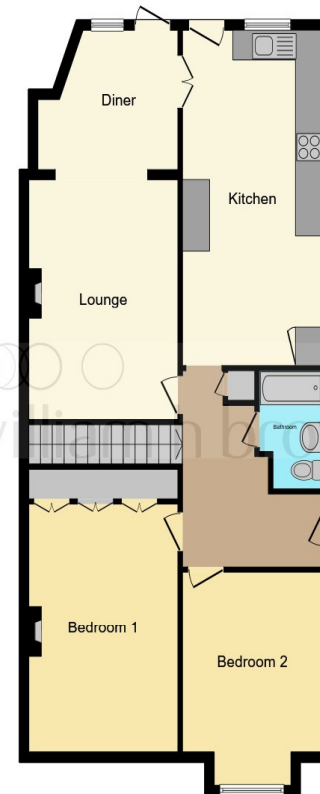
welcome to

Green Pastures Tatsfield Avenue, Nazeing Waltham Abbey

- Two/three bedrooms
- Stunning garden
- Driveway
- Plenty of potential STPP
- Sought after location

Tenure: Freehold EPC Rating: Awaited

£535,000



Total floor area 94.1 m² (1,013 sq.ft.) approx

This floor plan is for illustrative purposes only. It is not drawn to scale. Any measurements, floor areas (including any total floor area), openings and orientation are approximate. No details are guaranteed, they cannot be relied upon for any purpose and they do not form part of any agreement. No liability is taken for any error, omission or misstatement. A party must rely upon its own inspection(s). Powered by www.focalagent.com

view this property online williamhbrown.co.uk/Property/BRX108793



Property Ref:
BRX108793 - 0002

1. MONEY LAUNDERING REGULATIONS Intending purchasers will be asked to produce identification documentation at a later stage and we would ask for your co-operation in order that there is no delay in agreeing the sale. 2. These particulars do not constitute part or all of an offer or contract. 3. The measurements indicated are supplied for guidance only and as such must be considered incorrect. Potential buyers are advised to recheck measurements before committing to any expense. 4. We have not tested any apparatus, equipment, fixtures or services and it is in the buyers interest to check the working condition of any appliances. 5. Where an EPC, or a Home Report (Scotland only) is held for this property, it is available for inspection at the branch by appointment. If you require a printed version of a Home Report, you will need to pay a reasonable production charge reflecting printing and other costs. 6. We are not able to offer an opinion either written or verbal on the content of these reports and this must be obtained from your legal representative. 7. Whilst we take care in preparing these reports, a buyer should ensure that his/her legal representative confirms as soon as possible all matters relating to title including the extent and boundaries of the property and other important matters before exchange of contracts.

William H Brown is a trading name of Sequence (UK) Limited which is registered in England and Wales under company number 4268443, Registered Office is Cumbria House, 16-20 Hockliffe Street, Leighton Buzzard, Bedfordshire, LU7 1GN. VAT Registration Number is 500 2481 05.


william h brown



01992 464174



Broxbourne@williamhbrown.co.uk



47 High Road, BROXBOURNE, Hertfordshire,
EN10 7HX



williamhbrown.co.uk