



barnard marcus

Lower Richmond Road, LONDON SW14 7HX



welcome to

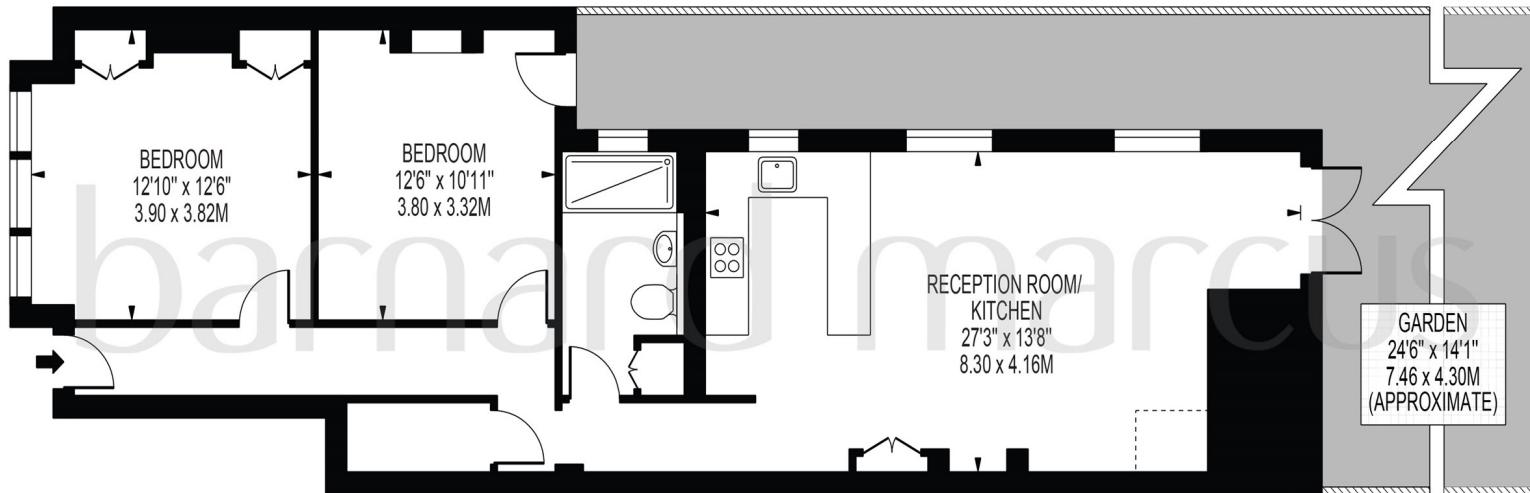
Lower Richmond Road, LONDON

A gorgeous two double bedroom, freehold, ground floor Victorian maisonette with a stunning private south-facing rear garden.



LOWER RICHMOND ROAD

APPROXIMATE GROSS INTERNAL FLOOR AREA: 833 SQ FT - 77.36 SQ M



GROUND FLOOR
FOR ILLUSTRATION PURPOSES ONLY

THIS FLOOR PLAN SHOULD BE USED AS A GENERAL OUTLINE FOR GUIDANCE ONLY AND DOES NOT CONSTITUTE IN WHOLE OR IN PART AN OFFER OR CONTRACT.
ANY INTENDING PURCHASER OR LESSEE SHOULD SATISFY THEMSELVES BY INSPECTION, SEARCHES, ENQUIRIES AND FULL SURVEY AS TO THE CORRECTNESS OF EACH STATEMENT.
ANY AREAS, MEASUREMENTS OR DISTANCES QUOTED ARE APPROXIMATE AND SHOULD NOT BE USED TO VALUE A PROPERTY OR BE THE BASIS OF ANY SALE OR LET.

Nestled in the picturesque neighbourhood close to Richmond,
This charming ground floor Victorian flat offers a perfect blend of period features and modern amenities. Step inside to discover a spacious two-bedroom layout adorned with classic Victorian touches like high ceilings and large windows. The highlight of this elegant home is its contemporary kitchen, seamlessly integrated into the living space, boasting sleek cabinetry and ample counter space for culinary endeavours. Adjacent to the kitchen, you'll find a luxurious bathroom and walk-in shower, meticulously designed for both style and convenience. Perfect for unwinding after a long day. Step outside to the south-facing garden, bathed in sunlight throughout the day, providing an idyllic retreat for alfresco dining, gardening, or simply basking in the tranquillity of nature. With its desirable location (within 0.5 miles of Mortlake mainline station), timeless charm, and modern conveniences, this Victorian flat offers a truly exceptional living experience in one of Richmond's most soughtafter neighbourhoods.

welcome to

Lower Richmond Road, LONDON

- Stunning Victorian Ground Floor Apartment
- Two Double Bedrooms
- Very Spacious Living Room
- Kitchen/Diner
- Good transport links (SWR trains to central London, Kew Gardens district line and direct bus to Hammersmith and Circle, District and Piccadilly lines)

Tenure: Freehold EPC Rating: C

£675,000



view this property online barnardmarcus.co.uk/Property/SHN106125



Property Ref:
SHN106125 - 0015

1. MONEY LAUNDERING REGULATIONS Intending purchasers will be asked to produce identification documentation at a later stage and we would ask for your co-operation in order that there is no delay in agreeing the sale. 2. These particulars do not constitute part or all of an offer or contract. 3. The measurements indicated are supplied for guidance only and as such must be considered incorrect. Potential buyers are advised to recheck measurements before committing to any expense. 4. We have not tested any apparatus, equipment, fixtures or services and it is in the buyers interest to check the working condition of any appliances. 5. Where an EPC, or a Home Report (Scotland only) is held for this property, it is available for inspection at the branch by appointment. If you require a printed version of a Home Report, you will need to pay a reasonable production charge reflecting printing and other costs. 6. We are not able to offer an opinion either written or verbal on the content of these reports and this must be obtained from your legal representative. 7. Whilst we take care in preparing these reports, a buyer should ensure that his/her legal representative confirms as soon as possible all matters relating to title including the extent and boundaries of the property and other important matters before exchange of contracts.

Barnard Marcus is a trading name of Sequence (UK) Limited which is registered in England and Wales under company number 4268443, Registered Office is Cumbria House, 16-20 Hockliffe Street, Leighton Buzzard, Bedfordshire, LU7 1GN. VAT Registration Number is 500 2481 05.



Please note the marker reflects the
postcode not the actual property



barnard marcus



020 8876 0152



EastSheen@barnardmarcus.co.uk



371 Upper Richmond Road West, East Sheen,
LONDON, SW14 7NX



barnardmarcus.co.uk