



Crompton Road, Aylsham, Norwich, NR11 6JS

welcome to

Crompton Road, Aylsham, Norwich

Don't miss this 3 Bedroom Mid-Terrace house in Aylsham with Lounge, Kitchen/Diner, Utility, Cloakroom and Bathroom! Outside offers an impressive 149 ft (stms) rear garden and off-road parking to the front. This property is offered with no onward chain.



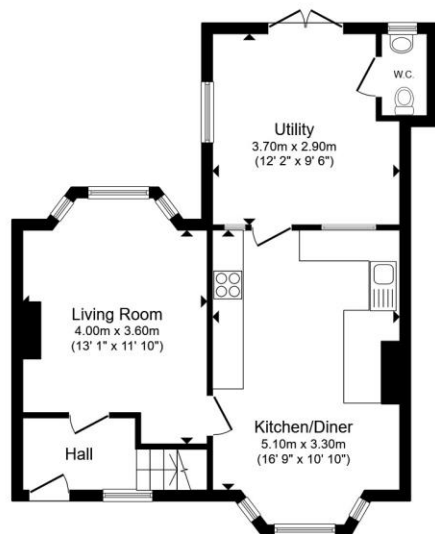
Description

Located in the popular market town of Aylsham is this Mid-Terraced House which enjoys internal accommodation to include Lounge with electric fire, fitted Kitchen/Diner, extended Utility Room & Cloakroom to the ground floor whilst upstairs has 3 Bedrooms and fitted Bathroom. Outside offers off-road parking and a large rear garden which measures approximately 149 ft (stms) with a timber Workshop.

Aylsham itself is a historic market town in Norfolk, England, situated on the River Bure about 10 miles north of Norwich. Known for its charming Georgian architecture and strong community spirit, the town features a traditional market square, independent shops, and regular local markets. Nearby attractions include Blickling Estate, a grand National Trust property. Aylsham also serves as a stop on the Bure Valley Railway, offering scenic steam-train journeys through the Norfolk countryside.

Entrance Hall

Door to Lounge and stairs leading to the first floor landing.



Ground Floor

Lounge

Wood burner inset to fireplace, radiator, TV point and double glazed bay window with views over the rear garden.

Kitchen / Diner

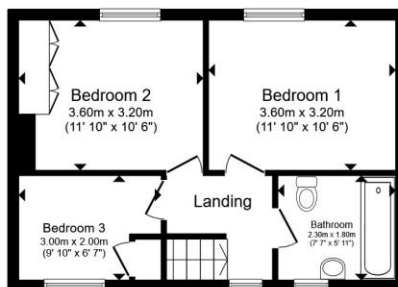
Updated and offers a range of base and eye level units, ceramic sink and drainer unit, wooden work surfaces, electric cooker point, cooker hood and under unit lighting. Radiator, plumbing for washing machine, wood effect floor, understairs cupboard, double glazed bay window to the front aspect and door to Utility Room.

Utility Room

Fitted with work surfaces, plumbing for washing machine and space for tumble dryer. Radiator, tiled floor, double glazed window and double doors leading to outside.

Cloakroom

Fitted with wash basin and low level WC. Tiled splashback, tiled floor, radiator and double glazed window.



First Floor

First Floor Landing

Double glazed window and access to the loft space. Doors to Bedrooms & Bathroom.

Bedroom One

Airing cupboard housing the boiler, radiator and double glazed window.

Bedroom Two

Radiator, built in cupboard and double glazed window.

Bedroom Three

Radiator and double glazed window.

Bathroom

Fitted suite comprising bath with mixer taps and shower over, wash basin and low level WC. Extractor fan, part-tiled walls, radiator and double glazed window.

Outside

There is a paved area to the front of the property providing off-road parking.

The plot is approximately 149 ft long, the rear garden has a lawned area, generous pond, mixture of plants and shrubs and a timber workshop measuring 13'6" x 8'1" internally, which has power and lighting.

Total floor area 92.0 m² (990 sq.ft.) approx

This floor plan is for illustrative purposes only. It is not drawn to scale. Any measurements, floor areas (including any total floor area), openings and orientation are approximate. No details are guaranteed, they cannot be relied upon for any purpose and they do not form part of any agreement. No liability is taken for any error, omission or misstatement. A party must rely upon its own inspection(s). Powered by www.propertybox.io



view this property online williamhbrown.co.uk/Property/AYS110169



welcome to

Crompton Road, Aylsham, Norwich

- Mid-Terraced House
- 3 Bedrooms
- Updated Kitchen/Diner & Extended Utility Room
- Off-Road Parking
- Garden & Timber Workshop
- 149 ft long Plot (stms)
- No Onward Chain

Tenure: Freehold EPC Rating: C
Council Tax Band: A

£295,000



Please note the marker reflects the
postcode not the actual property

view this property online williamhbrown.co.uk/Property/AYS110169



Property Ref:
AYS110169 - 0003

1. MONEY LAUNDERING REGULATIONS Intending purchasers will be asked to produce identification documentation at a later stage and we would ask for your co-operation in order that there is no delay in agreeing the sale. 2. These particulars do not constitute part or all of an offer or contract. 3. The measurements indicated are supplied for guidance only and as such must be considered incorrect. Potential buyers are advised to recheck measurements before committing to any expense. 4. We have not tested any apparatus, equipment, fixtures or services and it is in the buyer's interest to check the working condition of any appliances. 5. Where an EPC, or a Home Report (Scotland only) is held for this property, it is available for inspection at the branch by appointment. If you require a printed version of a Home Report, you will need to pay a reasonable production charge reflecting printing and other costs. 6. We are not able to offer an opinion either written or verbal on the content of these reports and this must be obtained from your legal representative. 7. Whilst we take care in preparing these reports, a buyer should ensure that his/her legal representative confirms as soon as possible all matters relating to title including the extent and boundaries of the property and other important matters before exchange of contracts.

William H Brown is a trading name of Sequence (UK) Limited which is registered in England and Wales under company number 4268443, Registered Office is Cumbria House, 16-20 Hockliffe Street, Leighton Buzzard, Bedfordshire, LU7 1GN. VAT Registration Number is 500 2481 05.



william h brown



01263 735252



Aylsham@williamhbrown.co.uk



23 Market Place, AYLSHAM, NORWICH,
Norfolk, NR11 6EL



williamhbrown.co.uk