



Morton Road, Aylsham, Norwich, NR11 6BA

welcome to

Morton Road, Aylsham, Norwich

>>> No Onward Chain <<<

A 3 Bedroom detached Bungalow in the ever popular market town of Aylsham which has been updated internally and offers front & rear gardens, ample off-road parking and a single Garage.



Description

Offered with No Onward Chain, don't miss this well-presented detached Bungalow set in a popular location in the market town of Aylsham. The property has been updated internally to include a modern Kitchen & Shower Room, Lounge with electric fire and 3 Bedrooms. Outside offers attractive front & rear gardens, off-road parking and a single Garage with up & over door.

Aylsham is a historic market town in Norfolk, situated on the River Bure about 10 miles north of Norwich. Known for its charming Georgian architecture and strong community spirit, the town features a traditional market square, independent shops, and regular local markets. Nearby attractions include Blickling Estate, a grand National Trust property. Aylsham also serves as a stop on the Bure Valley Railway, offering scenic steam-train journeys through the Norfolk countryside.

Entrance Porch

upvc front & rear doors, electric points, space for tumble dryer, tiled flooring and opens to inner hall.

Inner Hall

Loft access with ladder & radiator.

Lounge

10' 11" max x 15' 2" (3.33m max x 4.62m)

Electric fire with surround, TV point, radiator & front aspect double glazed window.

Kitchen

12' 4" x 8' 2" max (3.76m x 2.49m max)

Fitted with a range of wall & base units, wood effect work surface with matching upstand and stainless steel sink & drainer unit, electric oven, electric hob and plumbing for washing machine. Spotlights, vinyl flooring, radiator & central heating boiler housed in cupboard. Front & side aspect double glazed windows.

Bedroom One

9' 6" x 11' 8" (2.90m x 3.56m)

Fitted wardrobes, radiator & rear aspect double glazed window.

Bedroom Two

8' 7" x 9' 8" (2.62m x 2.95m)

Radiator & rear aspect double glazed window.

Bedroom Three

10' 10" x 6' 11" (3.30m x 2.11m)

Radiator & side aspect double glazed window.

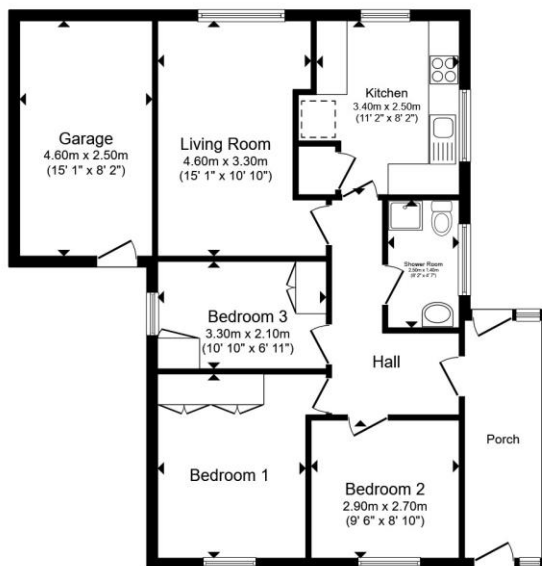
Shower Room

Suite comprising low level WC, wash basin & shower cubicle. Spotlights, extractor, heated towel rail & double glazed window.

Outside

To the front of the property is an attractive garden with off-road parking to the side, leading to a single Garage which has an up & over door and measures approximately 15'1" x 8'3" internally and has power, lighting and a personal door to the rear.

The rear garden has a generous paved area which leads from the property to the personal door on the Garage, a greenhouse, shed and planted borders.



Total floor area 81.9 m² (881 sq.ft.) approx

This floor plan is for illustrative purposes only. It is not drawn to scale. Any measurements, floor areas (including any total floor area), openings and orientation are approximate. No details are guaranteed, they cannot be relied upon for any purpose and they do not form part of any agreement. No liability is taken for any error, omission or misstatement. A party must rely upon its own inspection(s). Powered by www.propertybox.io

william
h brown

view this property online williamhbrown.co.uk/Property/AYS110089



welcome to

Morton Road, Aylsham, Norwich

- No Onward Chain
- Detached Bungalow
- 3 Bedrooms
- Modern Kitchen & Lounge with Electric Fire
- Off-Road Parking & Single Garage
- Attractive Front & Rear Gardens
- Sought After Market Town Location

Tenure: Freehold EPC Rating: C

Council Tax Band: C

£325,000



Please note the marker reflects the postcode not the actual property

view this property online [williamhbrown.co.uk/Property/AYS110089](https://www.williamhbrown.co.uk/Property/AYS110089)



Property Ref:
AYS110089 - 0002

1. MONEY LAUNDERING REGULATIONS Intending purchasers will be asked to produce identification documentation at a later stage and we would ask for your co-operation in order that there is no delay in agreeing the sale. 2. These particulars do not constitute part or all of an offer or contract. 3. The measurements indicated are supplied for guidance only and as such must be considered incorrect. Potential buyers are advised to recheck measurements before committing to any expense. 4. We have not tested any apparatus, equipment, fixtures or services and it is in the buyers interest to check the working condition of any appliances. 5. Where an EPC, or a Home Report (Scotland only) is held for this property, it is available for inspection at the branch by appointment. If you require a printed version of a Home Report, you will need to pay a reasonable production charge reflecting printing and other costs. 6. We are not able to offer an opinion either written or verbal on the content of these reports and this must be obtained from your legal representative. 7. Whilst we take care in preparing these reports, a buyer should ensure that his/her legal representative confirms as soon as possible all matters relating to title including the extent and boundaries of the property and other important matters before exchange of contracts.

William H Brown is a trading name of Sequence (UK) Limited which is registered in England and Wales under company number 4268443, Registered Office is Cumbria House, 16-20 Hockliffe Street, Leighton Buzzard, Bedfordshire, LU7 1GN. VAT Registration Number is 500 2481 05.



william h brown



01263 735252



Aylsham@williamhbrown.co.uk



23 Market Place, AYLSHAM, NORWICH,
Norfolk, NR11 6EL



[williamhbrown.co.uk](https://www.williamhbrown.co.uk)