



Donthorn Court, Aylsham, Norwich, NR11 6YF

welcome to

Donthorn Court, Aylsham, Norwich

This is a stunning conversion set on the St Michael's Hospital Site in the Market Town of Aylsham. This property is deceptively spacious offering lovely accommodation to include an impressive Kitchen/Diner with double doors to a generous Lounge. Outside there are low maintenance gardens and Garage.



Description

This is a stunning conversion set on the St Michael's Hospital Site in the Market Town of Aylsham. The property is deceptively spacious, offering luxury accommodation to include an impressive Kitchen/Diner with double doors to a generous Lounge. There are 3 Bedrooms (Master with en-suite), Family Bathroom and features to include valued ceilings and exposed beams. Outside there is a Garage, parking and low maintenance gardens.

Reception Hall

Engineered oak flooring, radiators, exposed beams, stairs to first floor and under stairs cupboard.

Cloakroom

Fitted with white suite comprising wash hand basin and low level WC. Tiled walls, tiled floor, extractor fan and radiator.

Kitchen/ Dining Room

20' 7" x 10' 8" (6.27m x 3.25m)

Fitted with a range of base and eye level units, under counter stainless steel 1½ bowl sink unit, granite work tops, tiled splash backs, double oven, induction hob and stainless steel cooker hood and plumbing for washing machine and space for a tumble dryer/dishwasher. TV point, telephone point, radiators, tiled floor, exposed beam, spotlights and central heating boiler. Double glazed sash window with hardwood plantation shutters and double doors to the lounge.

Lounge

19' 8" x 16' 2" (5.99m x 4.93m)

Two TV points, two telephone points, radiators, double glazed window with hardwood plantation shutters, exposed beams, spotlights, engineered oak flooring and door to rear garden.

First Floor Landing

Airing cupboard, radiator, access to loft space and exposed beams.

Bedroom 1

19' 7" x 15' 4" Max (5.97m x 4.67m Max)

Built-in wardrobes, two double cupboards, radiators, exposed beams, TV point, vaulted ceiling and two double glazed sash windows with hardwood plantation shutters,

En-Suite

Fitted with shower cubicle, pedestal wash hand basin and low level WC. Extractor fan, part tiled walls, tiled floor, shaver point, spotlights, vaulted ceiling and exposed beams.

Bedroom 2

16' 5" Max narrowing to 10' 6" Min x 10' 8" (5.00m Max narrowing to 3.20m Min x 3.25m)

Two built-in double wardrobes, exposed beams and sash style double glazed window with hardwood plantation shutters,

Bedroom 3

11' 1" x 8' 8" (3.38m x 2.64m)

Built-in double wardrobe, exposed beams, vaulted ceiling and sash style double glazed window with hardwood plantation shutters,

Bathroom

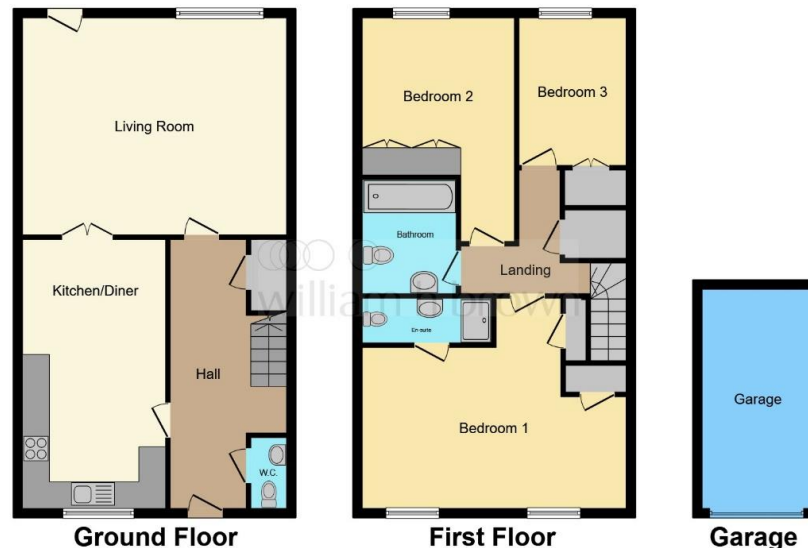
Fitted with white suite comprising bath with mixer tap and shower attachment, wash hand basin and low level WC. Extractor fan, part tiled walls, vaulted ceiling and ceramic floor tiles.

Outside

To the front is an allocated parking space with path to the front door.

The rear garden is enclosed with a patio area and has Astro turf and a path leading to the rear gate.

There is also an en-bloc garage with up and over door.



This floor plan is for illustrative purposes only. It is not drawn to scale. Any measurements, floor areas (including any total floor area), openings and orientation are approximate. No details are guaranteed, they cannot be relied upon for any purpose and they do not form part of any agreement. No liability is taken for any error, omission or misstatement. A party must rely upon its own inspection(s). Powered by www.focalagent.com

view this property online williamhbrown.co.uk/Property/AYS109458



welcome to

Donthorn Court, Aylsham, Norwich

- Stunning Conversion set on the Award Winning Site
- Impressive Kitchen/Diner
- Generous Lounge
- 3 Bedrooms - Master with En-suite
- Garage & Parking
- Low Maintenance Gardens

Tenure: Freehold EPC Rating: Exempt

£385,000



Please note the marker reflects the postcode not the actual property

view this property online williamhbrown.co.uk/Property/AYS109458



Property Ref:
AYS109458 - 0004

1. MONEY LAUNDERING REGULATIONS Intending purchasers will be asked to produce identification documentation at a later stage and we would ask for your co-operation in order that there is no delay in agreeing the sale. 2. These particulars do not constitute part or all of an offer or contract. 3. The measurements indicated are supplied for guidance only and as such must be considered incorrect. Potential buyers are advised to recheck measurements before committing to any expense. 4. We have not tested any apparatus, equipment, fixtures or services and it is in the buyer's interest to check the working condition of any appliances. 5. Where an EPC, or a Home Report (Scotland only) is held for this property, it is available for inspection at the branch by appointment. If you require a printed version of a Home Report, you will need to pay a reasonable production charge reflecting printing and other costs. 6. We are not able to offer an opinion either written or verbal on the content of these reports and this must be obtained from your legal representative. 7. Whilst we take care in preparing these reports, a buyer should ensure that his/her legal representative confirms as soon as possible all matters relating to title including the extent and boundaries of the property and other important matters before exchange of contracts.

William H Brown is a trading name of Sequence (UK) Limited which is registered in England and Wales under company number 4268443, Registered Office is Cumbria House, 16-20 Hockliffe Street, Leighton Buzzard, Bedfordshire, LU7 1GN. VAT Registration Number is 500 2481 05.



william h brown



01263 735252



Aylsham@williamhbrown.co.uk



23 Market Place, AYLSHAM, NORWICH,
Norfolk, NR11 6EL



williamhbrown.co.uk