



**Knaresborough Place, London, SW5 0TN**

**welcome to**

**Knareborough House, Knareborough Place, London,**

Super two-bedroom two-bathroom apartment set over 660 sqft in the heart of Kensington & Chelsea.

The lateral flat is located on the 1st floor of a well-maintained Victorian period conversion. The flat can be accessed via lift. The property has been meticulously decorated and configured to provide great sense of space and living accommodation.

There is an open plan living room kitchen with perfect space for entertaining. The kitchen has been kitted out to an exceptionally high standard with white kitchen units and complimented with fully integrated Mielle branded appliances. The apartment comprises of

two double bedrooms with great storage. The master bedroom comes with an en-suite. There is also an additional family bathroom with a bathtub.

Ornate corning, high quality solid oak wood flooring and bespoke furnishings can be seen throughout the property.

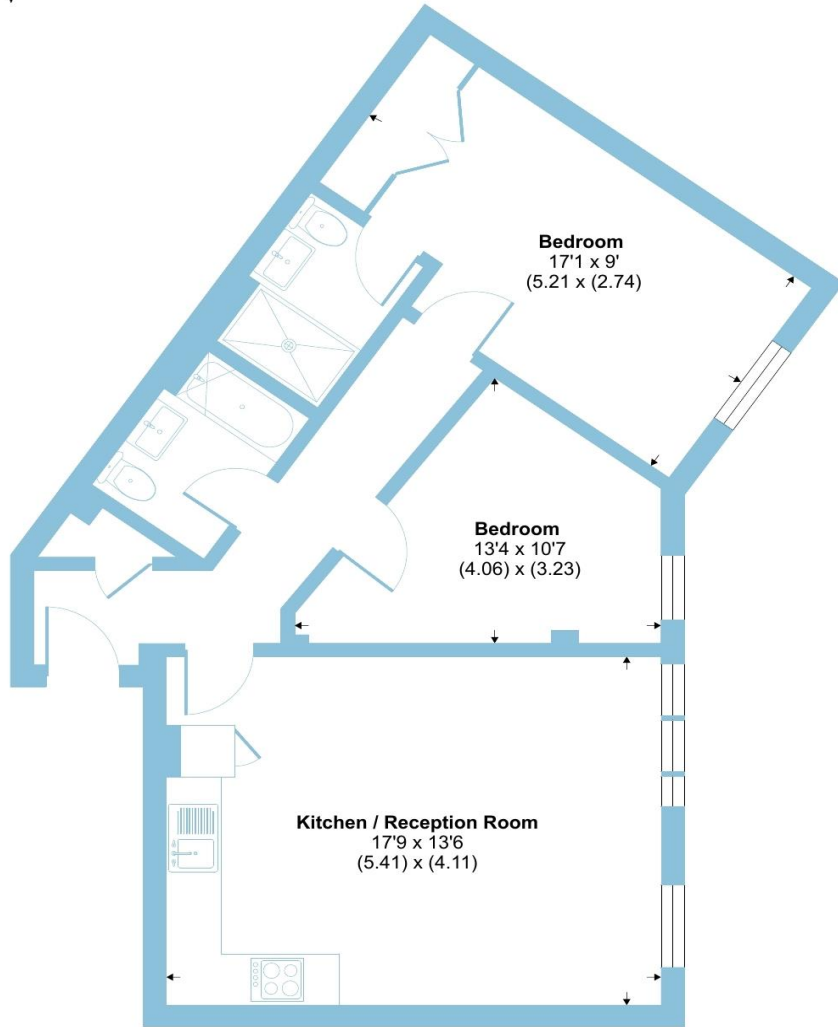
Knareborough Place is ideally situated 0.2 miles from Earls Court and 0.4 Miles from Gloucester Road London Underground stations, the property is well located for access to local amenities, transport links and access to the A4.



# Knaresborough Place, London, SW5

Approximate Area = 660 sq ft / 61.3 sq m

For identification only - Not to scale



FIRST FLOOR



Floor plan produced in accordance with RICS Property Measurement Standards incorporating International Property Measurement Standards (IPMS2 Residential). © nchecon 2024. Produced for Barnard Marcus. REF: 1154483



welcome to

## Knaresborough House Knaresborough Place, London

- 2 bedroom 2 bathroom apartment
- 900 year lease
- Miele appliances
- Lift access
- No chain

Tenure: Leasehold EPC Rating: C

This is a Leasehold property. We are awaiting further details about the Term of the lease. For further information please contact the branch. Please note additional fees could be incurred for items such as Leasehold packs.

# £750,000



Please note the marker reflects the postcode not the actual property

**view this property online** [barnardmarcus.co.uk/Property/ECT104612](https://barnardmarcus.co.uk/Property/ECT104612)



Property Ref:  
ECT104612 - 0004

1. MONEY LAUNDERING REGULATIONS Intending purchasers will be asked to produce identification documentation at a later stage and we would ask for your co-operation in order that there is no delay in agreeing the sale. 2. These particulars do not constitute part or all of an offer or contract. 3. The measurements indicated are supplied for guidance only and as such must be considered incorrect. Potential buyers are advised to recheck measurements before committing to any expense. 4. We have not tested any apparatus, equipment, fixtures or services and it is in the buyers interest to check the working condition of any appliances. 5. Where an EPC, or a Home Report (Scotland only) is held for this property, it is available for inspection at the branch by appointment. If you require a printed version of a Home Report, you will need to pay a reasonable production charge reflecting printing and other costs. 6. We are not able to offer an opinion either written or verbal on the content of these reports and this must be obtained from your legal representative. 7. Whilst we take care in preparing these reports, a buyer should ensure that his/her legal representative confirms as soon as possible all matters relating to title including the extent and boundaries of the property and other important matters before exchange of contracts.



barnard marcus



**020 7244 7337**



[EarlsCourt@barnardmarcus.co.uk](mailto:EarlsCourt@barnardmarcus.co.uk)



279 Old Brompton Road, LONDON, SW5 9JA



**[barnardmarcus.co.uk](https://barnardmarcus.co.uk)**