



Appletree Close, Attleborough, NR17 2LU

welcome to

Appletree Close, Attleborough

Spacious two-bedroom luxury park home with wrap-around rear garden and off-road parking for two cars. Situated on an Over 45's residential park, within close proximity to Attleborough town centre, local bus routes, and less than thirty minutes' drive into Norwich city!



Description

** GUIDE PRICE £170,000 - £180,000 **

This beautifully presented two-bedroom luxury park home is situated on a much sought after Over 45's residential development, within a convenient distance from the Norfolk market town of Attleborough. The property benefits from bright and airy living space throughout, two double bedrooms with an Ensuite and walk-in wardrobe to Bedroom One.

Featuring an Entrance Hall, 19ft bay-fronted Living Room, a separate Dining Room, modern Kitchen, and a convenient Shower room, this well-proportioned property also benefits from a landscaped wrap-around rear garden and off-road parking for two cars.

Living Room

19' 2" x 10' 4" (5.84m x 3.15m)

Triple-aspect windows. Fitted carpet. Fireplace and surround. French doors to Dining Room.

Dining Room

9' 7" x 8' 3" (2.92m x 2.51m)

French doors to Living Room. Double-glazed window to side.

Kitchen

11' 6" x 9' 7" (3.51m x 2.92m)

Selection of base & wall mounted storage units. Built-in gas oven. Fridge/freezer. Washing Machine. Double-glazed window to side. Boiler. Back door to Garden.

Bedroom One

11' 6" x 9' 7" (3.51m x 2.92m)

Fitted wardrobes. Radiator. Double-glazed window to side. Fitted carpet.

Ensuite

7' 3" x 5' 2" (2.21m x 1.57m)

Walk-in shower. WC. Basin. Extractor. Dressing Room. Storage Units.

Bedroom Two

9' 2" x 7' 7" (2.79m x 2.31m)

Double-glazed window to side. Fitted storage / wardrobes. Fitted carpet. Radiator.

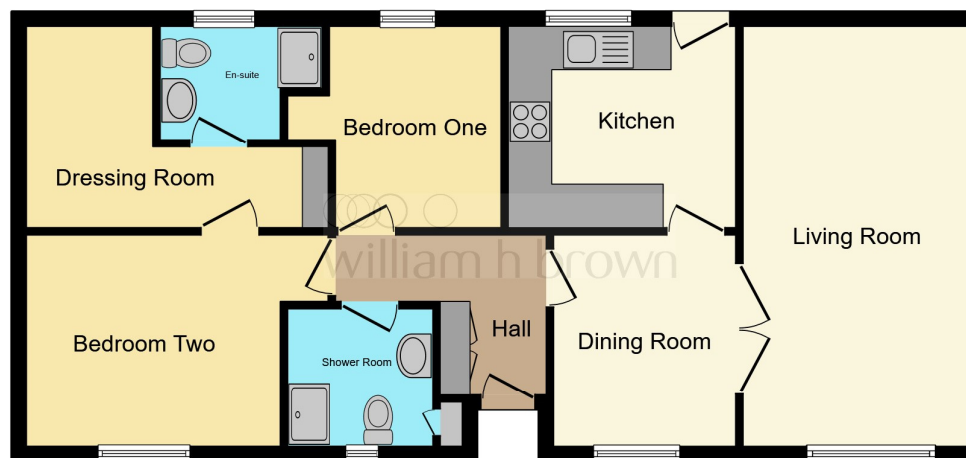
Bathroom

6' 7" x 6' 3" (2.01m x 1.91m)

Walk-in shower. WC. Wash basin & vanity. Storage. Double-glazed windows.

Rear Garden

Lawn area. Patio. Stepping-stone path. Fenced with Front Gate.



This floor plan is for illustrative purposes only. It is not drawn to scale. Any measurements, floor areas (including any total floor area), openings and orientation are approximate. No details are guaranteed, they cannot be relied upon for any purpose and they do not form part of any agreement. No liability is taken for any error, omission or misstatement. A party must rely upon its own inspection(s). Powered by www.focalagent.com



view this property online williamhbrown.co.uk/Property/ATB109467



welcome to

Appletree Close, Attleborough

- Two-bedroom Park Home
- Over 45's Residential Development
- Bedroom One with Ensuite
- Walk-in Dressing Room
- Separate Dining Room

Tenure: EPC Rating: Exempt
Council Tax Band: A

We are currently awaiting Tenure details. For further information please contact the branch. Please note additional fees could be incurred for items such as leasehold packs.

£170,000



Please note the marker reflects the postcode not the actual property

view this property online williamhbrown.co.uk/Property/ATB109467



Property Ref:
ATB109467 - 0007

1. MONEY LAUNDERING REGULATIONS Intending purchasers will be asked to produce identification documentation at a later stage and we would ask for your co-operation in order that there is no delay in agreeing the sale. 2. These particulars do not constitute part or all of an offer or contract. 3. The measurements indicated are supplied for guidance only and as such must be considered incorrect. Potential buyers are advised to recheck measurements before committing to any expense. 4. We have not tested any apparatus, equipment, fixtures or services and it is in the buyers interest to check the working condition of any appliances. 5. Where an EPC, or a Home Report (Scotland only) is held for this property, it is available for inspection at the branch by appointment. If you require a printed version of a Home Report, you will need to pay a reasonable production charge reflecting printing and other costs. 6. We are not able to offer an opinion either written or verbal on the content of these reports and this must be obtained from your legal representative. 7. Whilst we take care in preparing these reports, a buyer should ensure that his/her legal representative confirms as soon as possible all matters relating to title including the extent and boundaries of the property and other important matters before exchange of contracts.

William H Brown is a trading name of Sequence (UK) Limited which is registered in England and Wales under company number 4268443, Registered Office is Cumbria House, 16-20 Hockliffe Street, Leighton Buzzard, Bedfordshire, LU7 1GN. VAT Registration Number is 500 2481 05.



william h brown



01953 452990



Attleborough@williamhbrown.co.uk



Exchange Street, ATTLEBOROUGH, Norfolk,
NR17 2AB



williamhbrown.co.uk