



Tortoishell Drive, Attleborough NR17 1GU

welcome to

Tortoiseshell Drive, Attleborough

William H Brown are pleased to present this three bedroom semi-detached home! Viewing is advised!



Entrance Hall

Under stairs storage, double glazed door, 1x radiator, tiled floor & fuse box.

Cloak Room

WC, basin, extractor fan, tiled floor.

Sitting Room

15' 6" x 12' (4.72m x 3.66m)

With fitted carpet, 1x radiator, and double-glazed French doors to the rear.

Kitchen Diner

9' 3" x 7' 11" (2.82m x 2.41m)

Fitted kitchen with built in dishwasher, washing machine, fridge freezer, gas hob, electric oven, microwave, double glazed window to front, stainless steel sink drainer, mixer tap, 1 radiator and blinds.

Landing

1x radiator, fitted carpet, loft access with ladder.

Master Bedroom

11' 11" max x 11' (3.63m max x 3.35m)

Double glazed window to front, fitted carpet, radiator, and blinds.

En-Suite

WC, wash basin, shower cubical, frosted glass double glazed to front, tiled floor, radiator, extractor fan, spots lights.

Bedroom 2

10' 10" x 8' 7" (3.30m x 2.62m)

With fitted carpet, double glazed window to rear and blinds.

Bedroom 3

12' 1" max x 6' (3.68m max x 1.83m)

Double glazed window, blinds, fitted carpet and radiator.

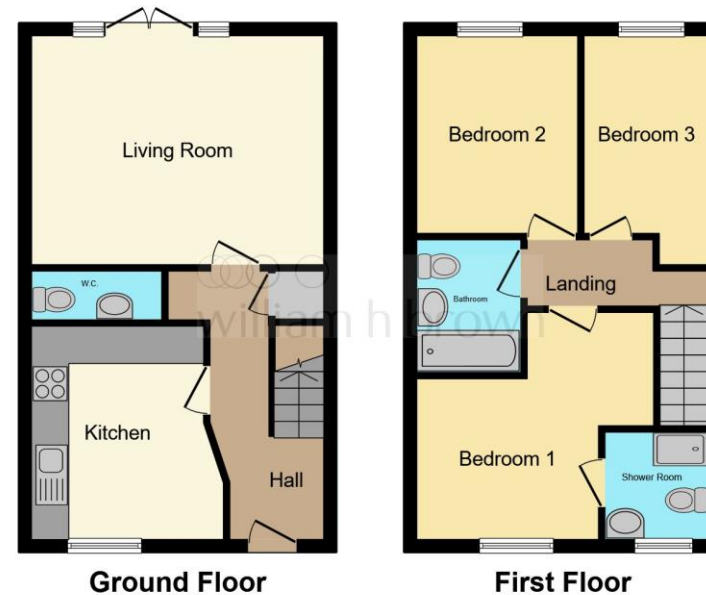
Bathroom

Bath, over bath shower, WC, basin, tiled floor, 1x radiator, extractor fan.

Enclosed Rear Garden

Patio, shed, side gate and mainly laid to lawn.

Carport, Off Road Parking



This floor plan is for illustrative purposes only. It is not drawn to scale. Any measurements, floor areas (including any total floor area), openings and orientation are approximate. No details are guaranteed, they cannot be relied upon for any purpose and they do not form part of any agreement. No liability is taken for any error, omission or misstatement. A party must rely upon its own inspection(s). Powered by www.focalagent.com



view this property online williamhbrown.co.uk/Property/ATB109150



welcome to

Tortoiseshell Drive, Attleborough

- Perfect for first time Buyers
- Located on a Popular Development
- Walking Distance of Local Schools
- Fantastic transport links
- 3 Bedrooms

Tenure: Freehold EPC Rating: B

offers in the region of

£250,000



Please note the marker reflects the postcode not the actual property

view this property online williamhbrown.co.uk/Property/ATB109150



Property Ref:
ATB109150 - 0005

1. MONEY LAUNDERING REGULATIONS Intending purchasers will be asked to produce identification documentation at a later stage and we would ask for your co-operation in order that there is no delay in agreeing the sale. 2. These particulars do not constitute part or all of an offer or contract. 3. The measurements indicated are supplied for guidance only and as such must be considered incorrect. Potential buyers are advised to recheck measurements before committing to any expense. 4. We have not tested any apparatus, equipment, fixtures or services and it is in the buyers interest to check the working condition of any appliances. 5. Where an EPC, or a Home Report (Scotland only) is held for this property, it is available for inspection at the branch by appointment. If you require a printed version of a Home Report, you will need to pay a reasonable production charge reflecting printing and other costs. 6. We are not able to offer an opinion either written or verbal on the content of these reports and this must be obtained from your legal representative. 7. Whilst we take care in preparing these reports, a buyer should ensure that his/her legal representative confirms as soon as possible all matters relating to title including the extent and boundaries of the property and other important matters before exchange of contracts.

William H Brown is a trading name of Sequence (UK) Limited which is registered in England and Wales under company number 4268443, Registered Office is Cumbria House, 16-20 Hockliffe Street, Leighton Buzzard, Bedfordshire, LU7 1GN. VAT Registration Number is 500 2481 05.



william h brown



01953 452990



Attleborough@williamhbrown.co.uk



Exchange Street, ATTLEBOROUGH, Norfolk,
NR17 2AB



williamhbrown.co.uk