



Leys Lane, ATTLEBOROUGH NR17 2HX

welcome to

Leys Lane, ATTLEBOROUGH

We are pleased to bring to the market this 2-bedroom detached bungalow situated in the town of Attleborough offering a modern feel throughout. Viewing is strongly advised!



Lounge/ Diner

16' 5" x 113' (5.00m x 34.44m)

Double glazed window to front, fitted carpet, radiator.

Kitchen

13' 7" x 8' 7" (4.14m x 2.62m)

Fitted Kitchen with a selection of matching base level and wall mounted storage units, stainless steel sink with drainer, double glazed windows to front and side, double glazed door to side access. space for upright fridge freezer, cooker, plumbing and space for washing machine.

Bedroom One

12' 4" x 10' (3.76m x 3.05m)

Fitted carpet, double glazed window to rear garden, radiator.

Bedroom Two

9' 10" x 92' 2" (3.00m x 28.09m)

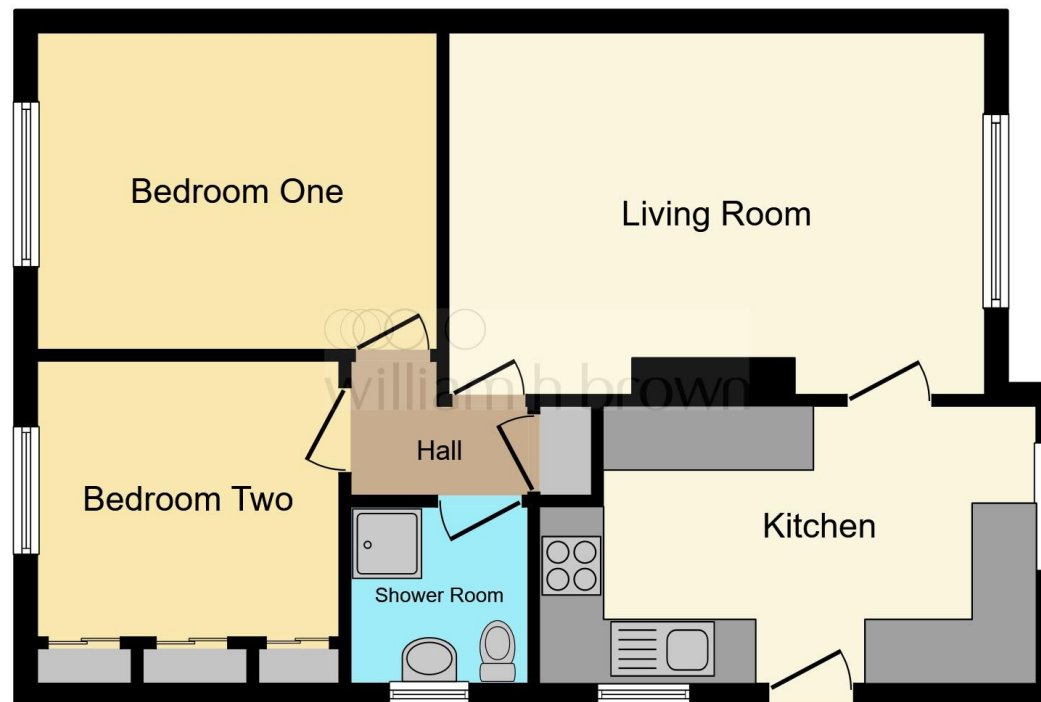
Fitted carpet, fitted wardrobes, radiator, and double-glazed window to rear garden.

Family Bathroom

With a walk-in shower, WC, hand wash basin & frosted double glazed window to side,

Rear Enclosed Garden

It is a good size enclosed rear garden, mainly laid to lawn with large patio area and garden shed.



This floor plan is for illustrative purposes only. It is not drawn to scale. Any measurements, floor areas (including any total floor area), openings and orientation are approximate. No details are guaranteed, they cannot be relied upon for any purpose and they do not form part of any agreement. No liability is taken for any error, omission or misstatement. A party must rely upon its own inspection(s). Powered by www.focalagent.com



check out more properties at williamhbrown.co.uk



welcome to

Leys Lane, ATTLEBOROUGH

- Located within easy reach of Attleborough Town Centre.
- Warranty remaining on Boiler.
- Double Glazing Throughout
- Recently Renovated
- Generous Rear Garden

Tenure: Freehold EPC Rating: Awaited

offers in the region of

£240,000



Please note the marker reflects the postcode not the actual property

check out more properties at williamhbrown.co.uk



Property Ref:
ATB109170 - 0004

1. MONEY LAUNDERING REGULATIONS Intending purchasers will be asked to produce identification documentation at a later stage and we would ask for your co-operation in order that there is no delay in agreeing the sale. 2. These particulars do not constitute part or all of an offer or contract. 3. The measurements indicated are supplied for guidance only and as such must be considered incorrect. Potential buyers are advised to recheck measurements before committing to any expense. 4. We have not tested any apparatus, equipment, fixtures or services and it is in the buyers interest to check the working condition of any appliances. 5. Where an EPC, or a Home Report (Scotland only) is held for this property, it is available for inspection at the branch by appointment. If you require a printed version of a Home Report, you will need to pay a reasonable production charge reflecting printing and other costs. 6. We are not able to offer an opinion either written or verbal on the content of these reports and this must be obtained from your legal representative. 7. Whilst we take care in preparing these reports, a buyer should ensure that his/her legal representative confirms as soon as possible all matters relating to title including the extent and boundaries of the property and other important matters before exchange of contracts.

William H Brown is a trading name of Sequence (UK) Limited which is registered in England and Wales under company number 4268443, Registered Office is Cumbria House, 16-20 Hockliffe Street, Leighton Buzzard, Bedfordshire, LU7 1GN. VAT Registration Number is 500 2481 05.



01953 452990



Attleborough@williamhbrown.co.uk



Exchange Street, ATTLEBOROUGH, Norfolk,
NR17 2AB



williamhbrown.co.uk