



**Pinewood Road, Winsford CW7 2GD**

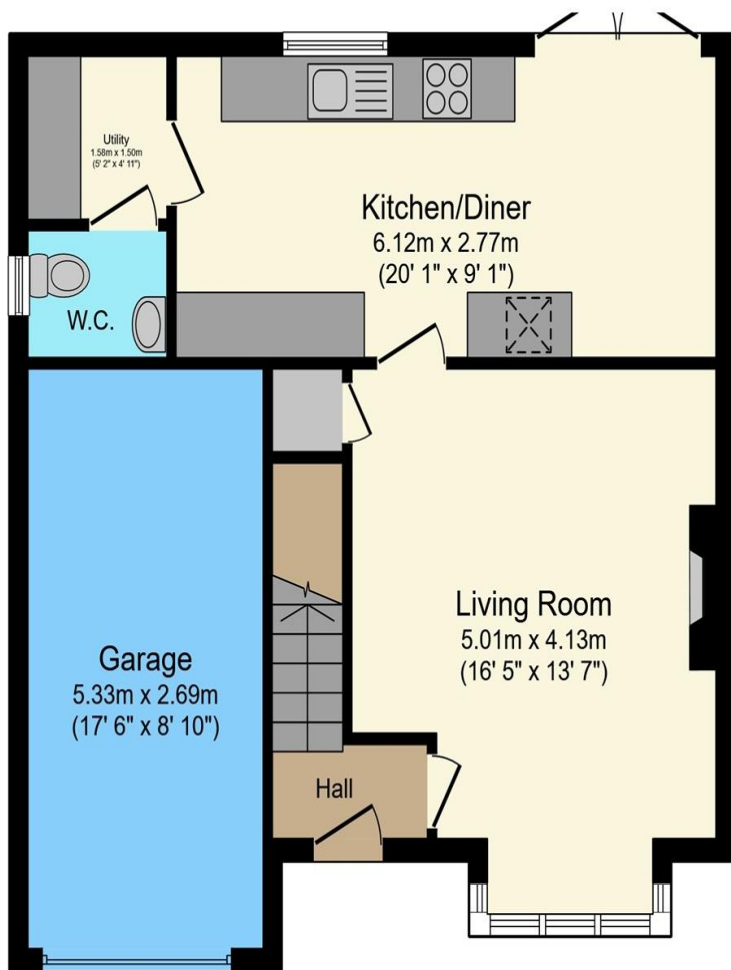


**welcome to**

**Pinewood Road, Winsford**

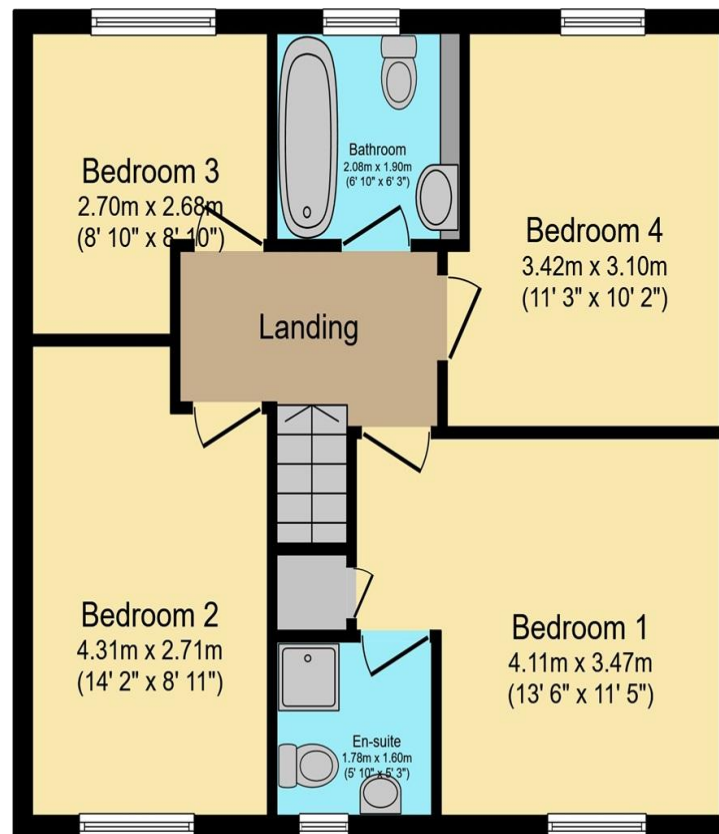
Four-bed detached home with lounge, kitchen-diner, utility and W.C., four bedrooms including en-suite primary, plus family bathroom. Driveway, garage and enclosed rear garden with lawn and decorative stone areas.





### Ground Floor

Floor area 60.1 m<sup>2</sup> (647 sq.ft.) approx



### First Floor

Floor area 56.1 m<sup>2</sup> (604 sq.ft.) approx

### Entrance Hall

### Living Room

16' 5" x 13' 7" ( 5.00m x 4.14m )

### Kitchen/ Diner

20' 1" x 9' 1" ( 6.12m x 2.77m )

### Utility

5' 2" x 4' 11" ( 1.57m x 1.50m )

### W.C.

### First Floor

### Primary Bedroom

13' 6" x 11' 5" ( 4.11m x 3.48m )

### En-Suite

### Bedroom Two

14' 2" x 8' 11" ( 4.32m x 2.72m )

### Bedroom Three

8' 10" x 8' 10" ( 2.69m x 2.69m )

### Bedroom Four

11' 3" x 10' 2" ( 3.43m x 3.10m )

### Family Bathroom

### External

The enclosed rear garden offers a mix of lawn and Low-maintenance slate-chip areas, creating attractive pathways and multiple seating spots for relaxing or outdoor dining

Total floor area 116.1 m<sup>2</sup> (1,250 sq.ft.) approx

This plan is for illustration purposes only and may not be representative of the property. Plan not to scale.

Powered by audioagent.com

welcome to

## Pinewood Road, Winsford

- Four Bedroom Detached Property
- Primary bedroom with En-suite
- Utility Room
- Downstairs W.C.
- Garage & Driveway

Tenure: Freehold EPC Rating: Awaited  
Council Tax Band: D

offers over  
**£300,000**



Please note the marker reflects the  
postcode not the actual property

**view this property online** [swetenhams.co.uk/Property/WSF108842](https://www.swetenhams.co.uk/Property/WSF108842)



Property Ref:  
WSF108842 - 0004

1. MONEY LAUNDERING REGULATIONS Intending purchasers will be asked to produce identification documentation at a later stage and we would ask for your co-operation in order that there is no delay in agreeing the sale. 2. These particulars do not constitute part or all of an offer or contract. 3. The measurements indicated are supplied for guidance only and as such must be considered incorrect. Potential buyers are advised to recheck measurements before committing to any expense. 4. We have not tested any apparatus, equipment, fixtures or services and it is in the buyers interest to check the working condition of any appliances. 5. Where an EPC, or a Home Report (Scotland only) is held for this property, it is available for inspection at the branch by appointment. If you require a printed version of a Home Report, you will need to pay a reasonable production charge reflecting printing and other costs. 6. We are not able to offer an opinion either written or verbal on the content of these reports and this must be obtained from your legal representative. 7. Whilst we take care in preparing these reports, a buyer should ensure that his/her legal representative confirms as soon as possible all matters relating to title including the extent and boundaries of the property and other important matters before exchange of contracts.

Swetenhams is a trading name of Sequence (UK) Limited which is registered in England and Wales under company number 4268443, Registered Office is Cumbria House, 16-20 Hockliffe Street, Leighton Buzzard, Bedfordshire, LU7 1GN. VAT Registration Number is 500 2481 05.



swetenhams



**01606 593344**



[Winsford@swetenhams.co.uk](mailto:Winsford@swetenhams.co.uk)



12 Dingle Walk, Winsford Cross Shopping  
Centre, WINSFORD, Cheshire, CW7 1BA



**[swetenhams.co.uk](https://www.swetenhams.co.uk)**