



Home Farm Park Lee Green Lane, Church Minshull Nantwich CW5 6ED

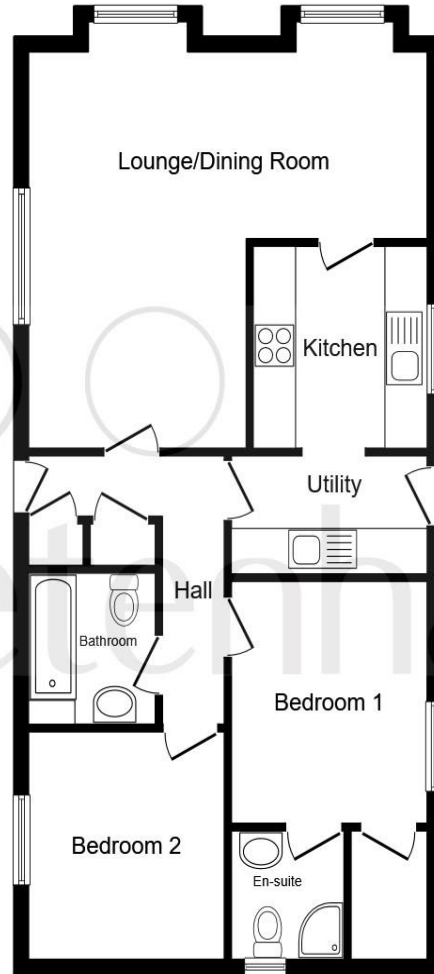
welcome to

Home Farm Park Lee Green Lane, Church Minshull Nantwich

New property with a spacious interior, coupled with a tranquil, rural location.

Benefiting from a lounge/dining room, leading through to a modern kitchen with appliances, two bedrooms with built in storage, bathroom and en suite to master. There is also a utility space, parking & garden.





Lounge/ Dining Room

18' 8" Max x 17' 1" Max (5.69m Max x 5.21m Max)

Kitchen

9' 1" x 7' 9" (2.77m x 2.36m)

Hall

Bedroom One

10' 4" x 9' 1" (3.15m x 2.77m)

Ensuite

Bedroom Two

9' 8" x 9' 1" (2.95m x 2.77m)

Bathroom

This floor plan is for illustrative purposes only. It is not drawn to scale. Any measurements, floor areas (including any total floor area), openings and orientation are approximate. No details are guaranteed, they cannot be relied upon for any purpose and they do not form part of any agreement. No liability is taken for any error, omission or misstatement. A party must rely upon its own inspection(s). Powered by www.focalagent.com

welcome to

Home Farm Park Lee Green Lane, Church Minshull Nantwich

- Brand New Park Home
- Modern Interior
- Off Road Parking
- Kitchen & Utility
- Two Bathrooms

Tenure: EPC Rating: Exempt

We are currently awaiting Tenure details. For further information please contact the branch. Please note additional fees could be incurred for items such as leasehold packs.

fixed price

£175,000



Please note the marker reflects the postcode not the actual property

view this property online [swetenhams.co.uk/Property/WSF108345](https://www.swetenhams.co.uk/Property/WSF108345)



Property Ref:
WSF108345 - 0005

1. MONEY LAUNDERING REGULATIONS Intending purchasers will be asked to produce identification documentation at a later stage and we would ask for your co-operation in order that there is no delay in agreeing the sale. 2. These particulars do not constitute part or all of an offer or contract. 3. The measurements indicated are supplied for guidance only and as such must be considered incorrect. Potential buyers are advised to recheck measurements before committing to any expense. 4. We have not tested any apparatus, equipment, fixtures or services and it is in the buyers interest to check the working condition of any appliances. 5. Where an EPC, or a Home Report (Scotland only) is held for this property, it is available for inspection at the branch by appointment. If you require a printed version of a Home Report, you will need to pay a reasonable production charge reflecting printing and other costs. 6. We are not able to offer an opinion either written or verbal on the content of these reports and this must be obtained from your legal representative. 7. Whilst we take care in preparing these reports, a buyer should ensure that his/her legal representative confirms as soon as possible all matters relating to title including the extent and boundaries of the property and other important matters before exchange of contracts.

Swetenhams is a trading name of Sequence (UK) Limited which is registered in England and Wales under company number 4268443, Registered Office is Cumbria House, 16-20 Hockliffe Street, Leighton Buzzard, Bedfordshire, LU7 1GN. VAT Registration Number is 500 2481 05.


swetenhams



01606 593344



Winsford@swetenhams.co.uk



12 Dingle Walk, Winsford Cross Shopping
Centre, WINSFORD, Cheshire, CW7 1BA



swetenhams.co.uk