



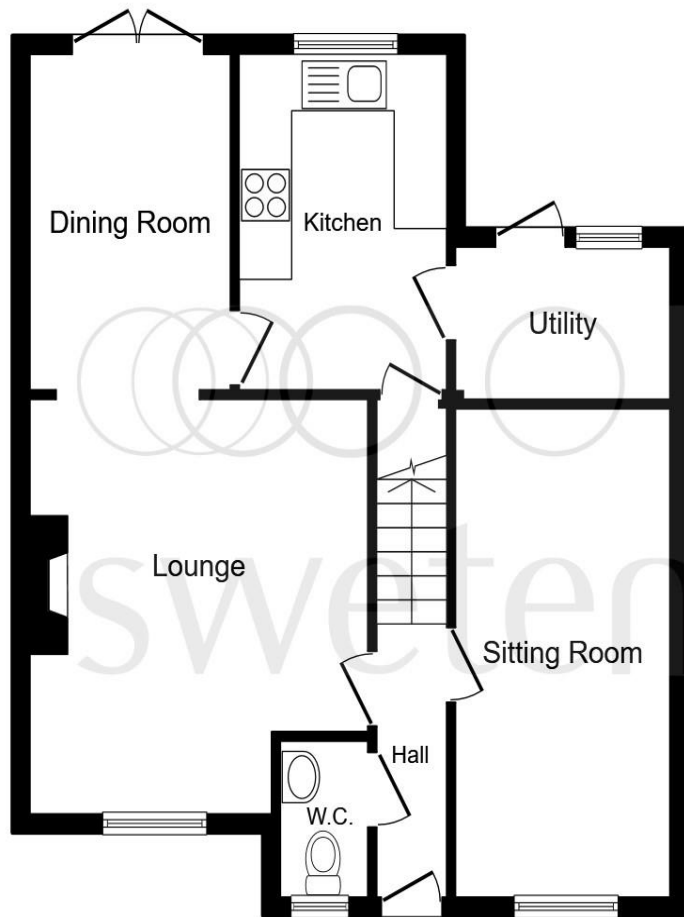
Fernleigh Close, Winsford CW7 2UY

welcome to

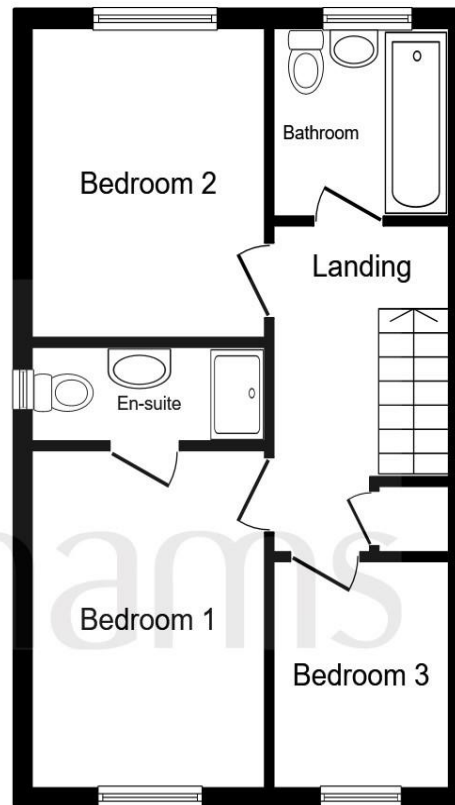
Fernleigh Close, Winsford

** GUIDE PRICE £280,000 - £290,000 ** This immaculately presented and recently modernised three bedroom detached home set on the popular Littler Cross development on the outskirts of Winsford.





Ground Floor



First Floor

Entrance Hall

Lounge

14' 4" max x 12' 7" max (4.37m max x 3.84m max)

Dining Room

11' 7" x 7' 5" (3.53m x 2.26m)

Kitchen

11' 6" x 7' 7" (3.51m x 2.31m)

Utility Room

8' 3" x 4' 9" (2.51m x 1.45m)

Sitting Room

16' 6" x 7' 9" (5.03m x 2.36m)

Downstairs W.C.

Landing

Bedroom One

12' 3" x 8' 8" (3.73m x 2.64m)

Ensuite

Bedroom Two

10' 7" x 8' 7" (3.23m x 2.62m)

Bedroom Three

7' 9" x 6' 5" (2.36m x 1.96m)

Bathroom

Driveway Parking

Rear Garden

This floor plan is for illustrative purposes only. It is not drawn to scale. Any measurements, floor areas (including any total floor area), openings and orientation are approximate. No details are guaranteed, they cannot be relied upon for any purpose and they do not form part of any agreement. No liability is taken for any error, omission or misstatement. A party must rely upon its own inspection(s). Powered by www.focalagent.com

welcome to

Fernleigh Close, Winsford

- ** GUIDE PRICE £280,000 - £290,000 **
- Three Bedroom Detached Home
- Driveway Parking
- Fully Enclosed Rear Garden
- Popular Littler Cross Area

Tenure: Freehold EPC Rating: C

guide price

£280,000



view this property online swetenhams.co.uk/Property/WSF108016

Please note the marker reflects the postcode not the actual property



Property Ref:
WSF108016 - 0007

1. MONEY LAUNDERING REGULATIONS Intending purchasers will be asked to produce identification documentation at a later stage and we would ask for your co-operation in order that there is no delay in agreeing the sale. 2. These particulars do not constitute part or all of an offer or contract. 3. The measurements indicated are supplied for guidance only and as such must be considered incorrect. Potential buyers are advised to recheck measurements before committing to any expense. 4. We have not tested any apparatus, equipment, fixtures or services and it is in the buyers interest to check the working condition of any appliances. 5. Where an EPC, or a Home Report (Scotland only) is held for this property, it is available for inspection at the branch by appointment. If you require a printed version of a Home Report, you will need to pay a reasonable production charge reflecting printing and other costs. 6. We are not able to offer an opinion either written or verbal on the content of these reports and this must be obtained from your legal representative. 7. Whilst we take care in preparing these reports, a buyer should ensure that his/her legal representative confirms as soon as possible all matters relating to title including the extent and boundaries of the property and other important matters before exchange of contracts.


swetenhams



01606 593344



Winsford@swetenhams.co.uk



12 Dingle Walk, Winsford Cross Shopping Centre, WINSFORD, Cheshire, CW7 1BA



swetenhams.co.uk