



Lurline Gardens, London SW11 4DE



welcome to

Lurline Gardens, London

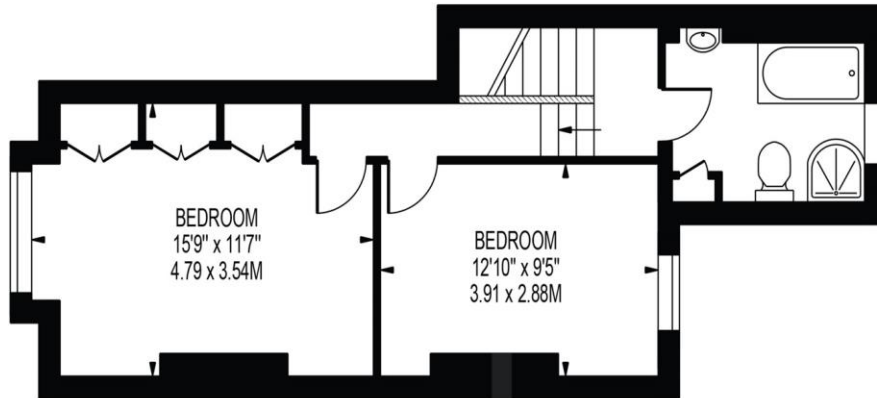
Great opportunity to acquire this Two double bedroom split level apartment with a double reception room, updated kitchen and bathroom, private rear garden, enviably situated one road back from Battersea Park, offering easy access to The Kings Road, Battersea Park, The River Thames and Battersea Power Station zone 1 underground station.

This attractive period property covers the lower and ground floor of this impressive building, comprising good sized double reception room / dining room, modern re-fitted kitchen leading with direct access to your private walled garden, spacious bathroom and 2 double bedrooms.

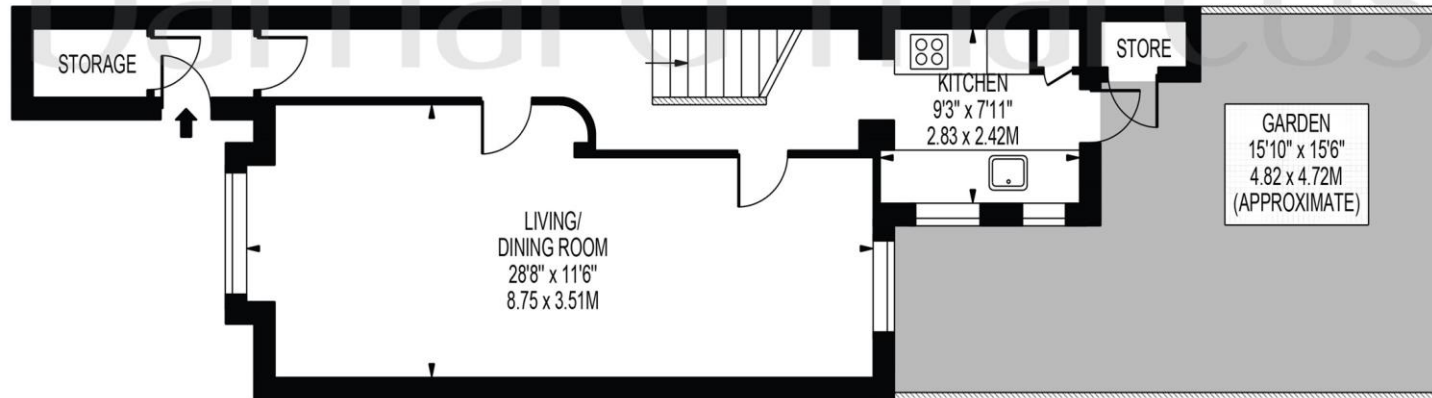


LURLINE GARDENS

APPROXIMATE GROSS INTERNAL FLOOR AREA: 959 SQ FT - 89.12 SQ M
(EXCLUDING STORE)



GROUND FLOOR



LOWER GROUND FLOOR

FOR ILLUSTRATION PURPOSES ONLY

THIS FLOOR PLAN SHOULD BE USED AS A GENERAL OUTLINE FOR GUIDANCE ONLY AND DOES NOT CONSTITUTE IN WHOLE OR IN PART AN OFFER OR CONTRACT.
ANY INTENDING PURCHASER OR LESSEE SHOULD SATISFY THEMSELVES BY INSPECTION, SEARCHES, ENQUIRIES AND FULL SURVEY AS TO THE CORRECTNESS OF EACH STATEMENT.
ANY AREAS, MEASUREMENTS OR DISTANCES QUOTED ARE APPROXIMATE AND SHOULD NOT BE USED TO VALUE A PROPERTY OR BE THE BASIS OF ANY SALE OR LET.

welcome to

Lurline Gardens, London

- Attractive period property
- Split level Lower Ground and Ground floors
- Two good size double bedrooms
- Big reception room / dining room
- Spacious bathroom
- Beautiful shaker style kitchen
- Private directly accessed walled garden
- Close to Battersea Power Station Zone 1 tube

Tenure: Leasehold EPC Rating: C

£800,000



Please note the marker reflects the postcode not the actual property

view this property online [barnardmarcus.co.uk/Property/BTS106218](https://www.barnardmarcus.co.uk/Property/BTS106218)

This is a Leasehold property. We are awaiting further details about the Term of the lease. For further information please contact the branch. Please note additional fees could be incurred for items such as Leasehold packs.



Property Ref:
BTS106218 - 0002

1. MONEY LAUNDERING REGULATIONS Intending purchasers will be asked to produce identification documentation at a later stage and we would ask for your co-operation in order that there is no delay in agreeing the sale. 2. These particulars do not constitute part or all of an offer or contract. 3. The measurements indicated are supplied for guidance only and as such must be considered incorrect. Potential buyers are advised to recheck measurements before committing to any expense. 4. We have not tested any apparatus, equipment, fixtures or services and it is in the buyers interest to check the working condition of any appliances. 5. Where an EPC, or a Home Report (Scotland only) is held for this property, it is available for inspection at the branch by appointment. If you require a printed version of a Home Report, you will need to pay a reasonable production charge reflecting printing and other costs. 6. We are not able to offer an opinion either written or verbal on the content of these reports and this must be obtained from your legal representative. 7. Whilst we take care in preparing these reports, a buyer should ensure that his/her legal representative confirms as soon as possible all matters relating to title including the extent and boundaries of the property and other important matters before exchange of contracts.

Barnard Marcus is a trading name of Sequence (UK) Limited which is registered in England and Wales under company number 4268443, Registered Office is Cumbria House, 16-20 Hockliffe Street, Leighton Buzzard, Bedfordshire, LU7 1GN. VAT Registration Number is 500 2481 05.



barnard marcus



020 7228 8686



Battersea@barnardmarcus.co.uk



235-237 Lavender Hill, Battersea, LONDON,
SW11 1JW



[barnardmarcus.co.uk](https://www.barnardmarcus.co.uk)