



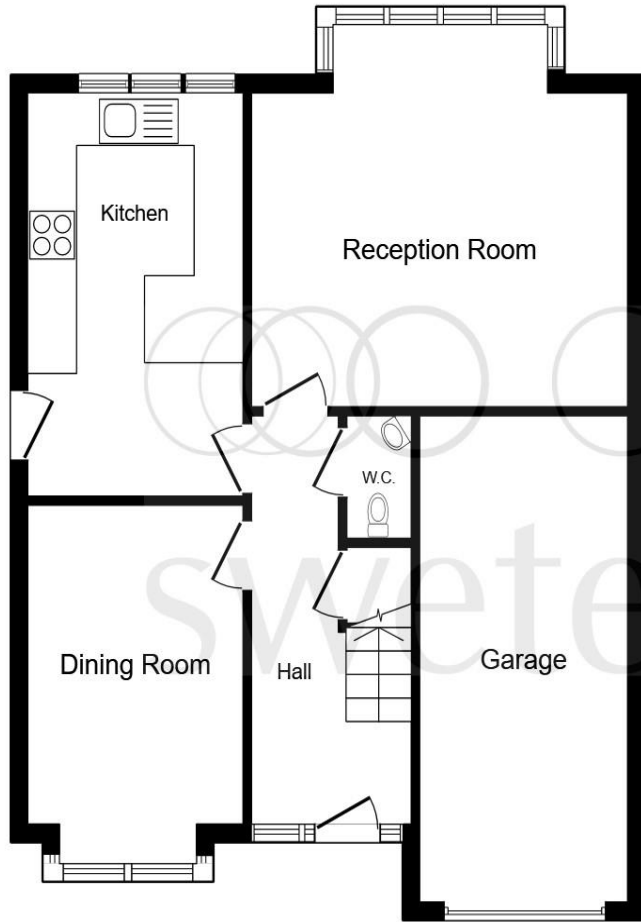
Sheridan Way, Runcorn WA7 1XL

Welcome to

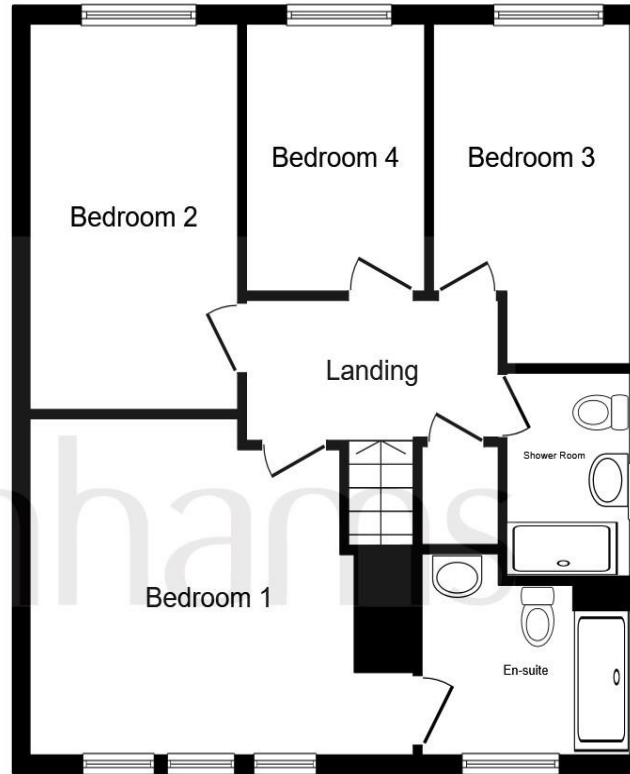
Sheridan Way, Runcorn

Swetenhams is delighted to showcase this four bedroom detached home situated within this established residential development of similar high calibre homes. Viewing will be essential for the accommodation specification to be fully assessed.





Ground Floor



First Floor

Entrance

Hall

Ground Floor W.C.

Lounge

15' x 14' 3" to bay (4.57m x 4.34m to bay)

Dining Room

13' 5" to bay x 8' 8" (4.09m to bay x 2.64m)

Kitchen

15' x 8' 7" (4.57m x 2.62m)

On The First Floor

Bedroom One

10' 5" x 15" (3.17m x 4.57m)

Ensuite

Bedroom Two

13' 8" to recess x 8' 1" (4.17m to recess x 2.46m)

Bedroom Three

9' 10" x 7' 2" (3.00m x 2.18m)

Bedroom Four

11' 8" x 8' 2" (3.56m x 2.49m)

Shower Room

Outside

This floor plan is for illustrative purposes only. It is not drawn to scale. Any measurements, floor areas (including any total floor area), openings and orientation are approximate. No details are guaranteed, they cannot be relied upon for any purpose and they do not form part of any agreement. No liability is taken for any error, omission or misstatement. A party must rely upon its own inspection(s). Powered by www.focalagent.com

Welcome to

Sheridan Way, Runcorn

- Superb detached family home
- Four bedroom accommodation
- Ensuite to Master Bedroom
- Two reception rooms
- Contemporary styled kitchen

Tenure: Freehold EPC Rating: Awaited

offers over

£350,000



Please note the marker reflects the postcode not the actual property

view this property online swetenhams.co.uk/Property/FRM108957



Property Ref:
FRM108957 - 0004

1. MONEY LAUNDERING REGULATIONS Intending purchasers will be asked to produce identification documentation at a later stage and we would ask for your co-operation in order that there is no delay in agreeing the sale. 2. These particulars do not constitute part or all of an offer or contract. 3. The measurements indicated are supplied for guidance only and as such must be considered incorrect. Potential buyers are advised to recheck measurements before committing to any expense. 4. We have not tested any apparatus, equipment, fixtures or services and it is in the buyers interest to check the working condition of any appliances. 5. Where an EPC, or a Home Report (Scotland only) is held for this property, it is available for inspection at the branch by appointment. If you require a printed version of a Home Report, you will need to pay a reasonable production charge reflecting printing and other costs. 6. We are not able to offer an opinion either written or verbal on the content of these reports and this must be obtained from your legal representative. 7. Whilst we take care in preparing these reports, a buyer should ensure that his/her legal representative confirms as soon as possible all matters relating to title including the extent and boundaries of the property and other important matters before exchange of contracts.

Swetenhams is a trading name of Sequence (UK) Limited which is registered in England and Wales under company number 4268443, Registered Office is Cumbria House, 16-20 Hockliffe Street, Leighton Buzzard, Bedfordshire, LU7 1GN. VAT Registration Number is 500 2481 05.


swetenhams



01928 732626



frodsham@swetenhams.co.uk



Froda House, 113 Main Street, FRODSHAM,
Cheshire, WA6 7AB



swetenhams.co.uk