



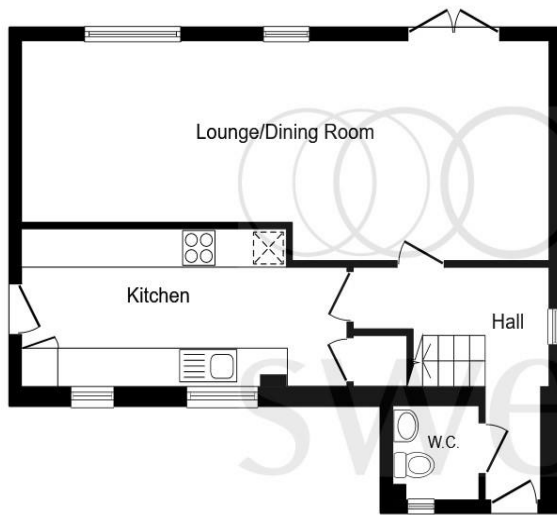
Osier Close, Elton CH2 4RS

Welcome to

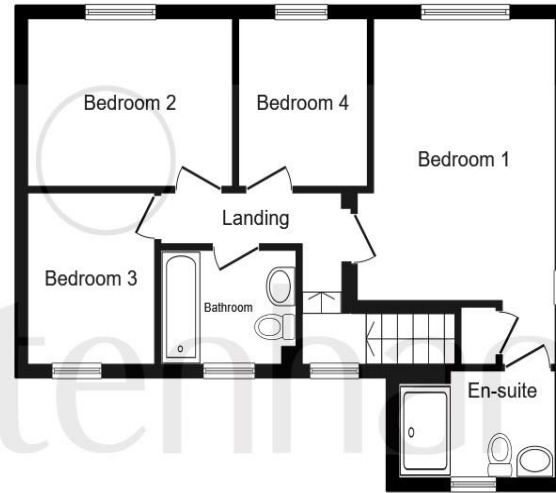
Osier Close, Elton

A super four bedroom family home in this now maturing residential area. Great presentation, load of space and even better road links. There's a lot to like here so don't miss out.

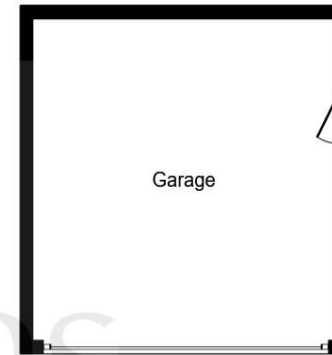




Ground Floor



First Floor



Garage

Entrance

Ground Floor W.C.

Lounge

29' x 11' 3" to recess (8.84m x 3.43m to recess)

Kitchen

18' x 8' (5.49m x 2.44m)

On The First Floor

Bedroom One

14' 9" x 10' (4.50m x 3.05m)

En-Suite Shower Room

Bedroom Two

11' 4" x 8' 8" (3.45m x 2.64m)

Bedroom Three

9' x 7' (2.74m x 2.13m)

Bedroom Four

8' 8" x 7' 2" (2.64m x 2.18m)

Bathroom

Outside

This floor plan is for illustrative purposes only. It is not drawn to scale. Any measurements, floor areas (including any total floor area), openings and orientation are approximate. No details are guaranteed, they cannot be relied upon for any purpose and they do not form part of any agreement. No liability is taken for any error, omission or misstatement. A party must rely upon its own inspection(s). Powered by www.focalagent.com

Welcome to

Osier Close, Elton

- Detached Family Home.
- 29' main reception room.
- Superbly fitted Kitchen.
- Master Bedroom with en-suite
- Three Further Bedrooms.

Tenure: Freehold EPC Rating: C

offers in excess of

£300,000



view this property online swetenhams.co.uk/Property/FRM108645

Please note the marker reflects the postcode not the actual property



Property Ref:
FRM108645 - 0004

1. MONEY LAUNDERING REGULATIONS Intending purchasers will be asked to produce identification documentation at a later stage and we would ask for your co-operation in order that there is no delay in agreeing the sale. 2. These particulars do not constitute part or all of an offer or contract. 3. The measurements indicated are supplied for guidance only and as such must be considered incorrect. Potential buyers are advised to recheck measurements before committing to any expense. 4. We have not tested any apparatus, equipment, fixtures or services and it is in the buyers interest to check the working condition of any appliances. 5. Where an EPC, or a Home Report (Scotland only) is held for this property, it is available for inspection at the branch by appointment. If you require a printed version of a Home Report, you will need to pay a reasonable production charge reflecting printing and other costs. 6. We are not able to offer an opinion either written or verbal on the content of these reports and this must be obtained from your legal representative. 7. Whilst we take care in preparing these reports, a buyer should ensure that his/her legal representative confirms as soon as possible all matters relating to title including the extent and boundaries of the property and other important matters before exchange of contracts.


swetenhams



01928 732626



frodsham@swetenhams.co.uk



Froda House, 113 Main Street, FRODSHAM,
Cheshire, WA6 7AB



swetenhams.co.uk