



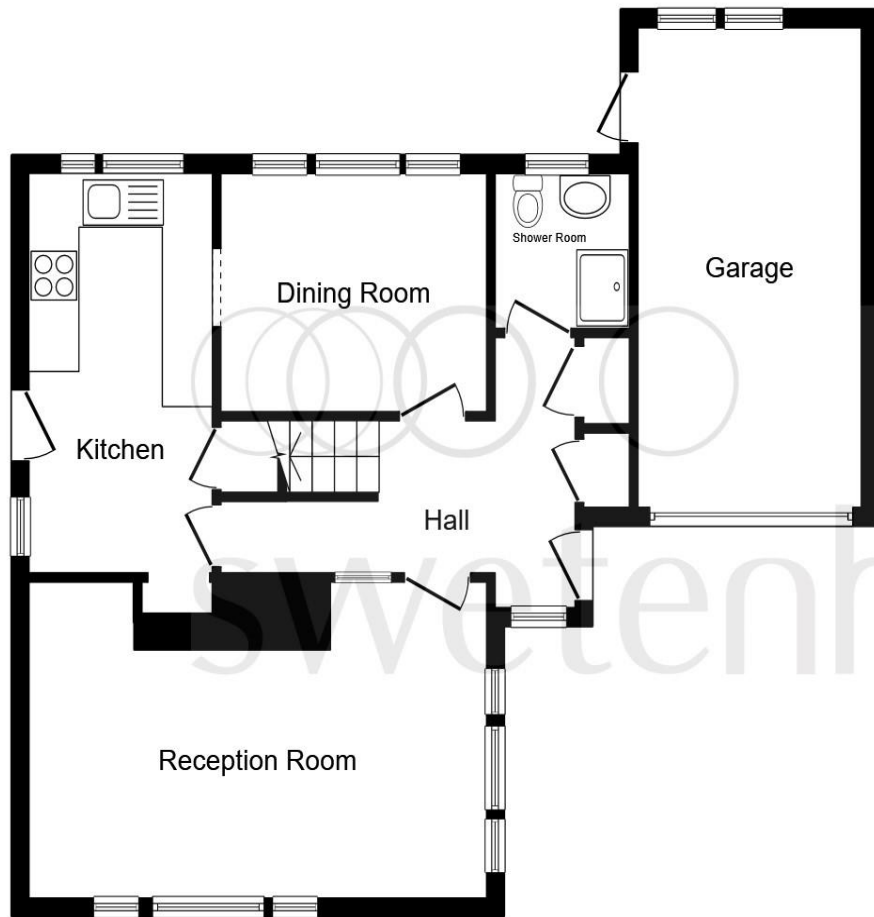
Denbigh Close, Helsby WA6 0ED

Welcome to

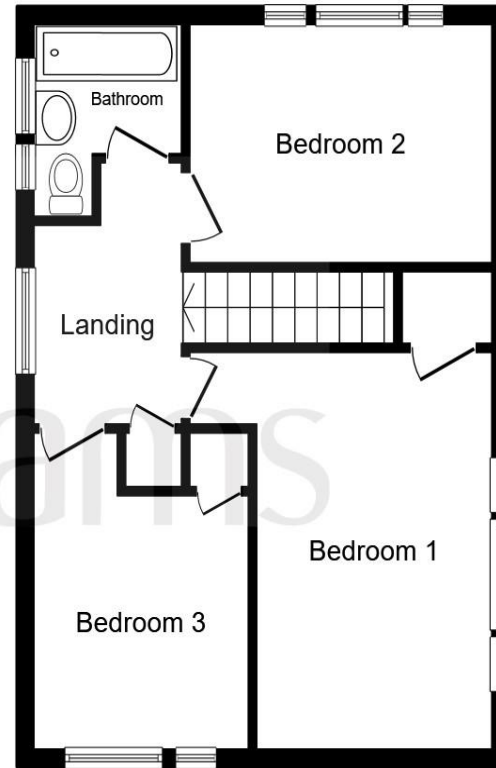
Denbigh Close, Helsby

Here is a rare opportunity, a detached renovation project that will reap dividends but could be completed whilst being lived in. It stands in a generous family-sized plot with gardens to front and an even bigger area to rear. There are three bedrooms and two totally separate reception rooms.





Ground Floor



First Floor

Entrance

Ground Floor Shower Room

Lounge

18' x 11' 6" to recess (5.49m x 3.51m to recess)

Dining Room

10' 7" x 8' 11" (3.23m x 2.72m)

Kitchen

14' 6" x 6' 10" (4.42m x 2.08m)

On The First Floor

Bedroom One

14' 3" x 9' 4" (4.34m x 2.84m)

Bedroom Two

12' 2" x 9' 2" (3.71m x 2.79m)

Bedroom Three

11' 2" to lead in recess x 8' 5" (3.40m to lead in recess x 2.57m)

Bathroom

Outside

This floor plan is for illustrative purposes only. It is not drawn to scale. Any measurements, floor areas (including any total floor area), openings and orientation are approximate. No details are guaranteed, they cannot be relied upon for any purpose and they do not form part of any agreement. No liability is taken for any error, omission or misstatement. A party must rely upon its own inspection(s). Powered by www.focalagent.com

Welcome to

Denbigh Close, Helsby

- Detached family home.
- Three Bedroom Accommodation.
- Two Reception Rooms.
- Ground floor Shower Room.
- Separate Kitchen

Tenure: Freehold EPC Rating: Awaited

offers over

£325,000



view this property online swetenhams.co.uk/Property/FRM108358

Please note the marker reflects the postcode not the actual property



Property Ref:
FRM108358 - 0002

1. MONEY LAUNDERING REGULATIONS Intending purchasers will be asked to produce identification documentation at a later stage and we would ask for your co-operation in order that there is no delay in agreeing the sale. 2. These particulars do not constitute part or all of an offer or contract. 3. The measurements indicated are supplied for guidance only and as such must be considered incorrect. Potential buyers are advised to recheck measurements before committing to any expense. 4. We have not tested any apparatus, equipment, fixtures or services and it is in the buyers interest to check the working condition of any appliances. 5. Where an EPC, or a Home Report (Scotland only) is held for this property, it is available for inspection at the branch by appointment. If you require a printed version of a Home Report, you will need to pay a reasonable production charge reflecting printing and other costs. 6. We are not able to offer an opinion either written or verbal on the content of these reports and this must be obtained from your legal representative. 7. Whilst we take care in preparing these reports, a buyer should ensure that his/her legal representative confirms as soon as possible all matters relating to title including the extent and boundaries of the property and other important matters before exchange of contracts.


swetenhams



01928 732626



frodsham@swetenhams.co.uk



Froda House, 113 Main Street, FRODSHAM,
Cheshire, WA6 7AB



swetenhams.co.uk