



**Yew Tree Close, Thornton-Le-Moors CH2 4JY**

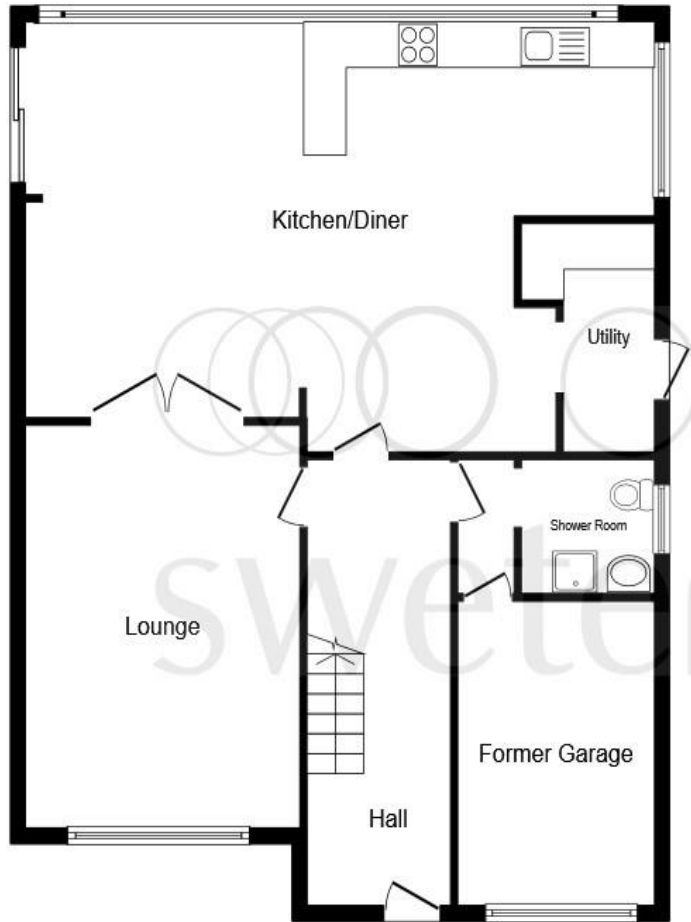


**Welcome to**

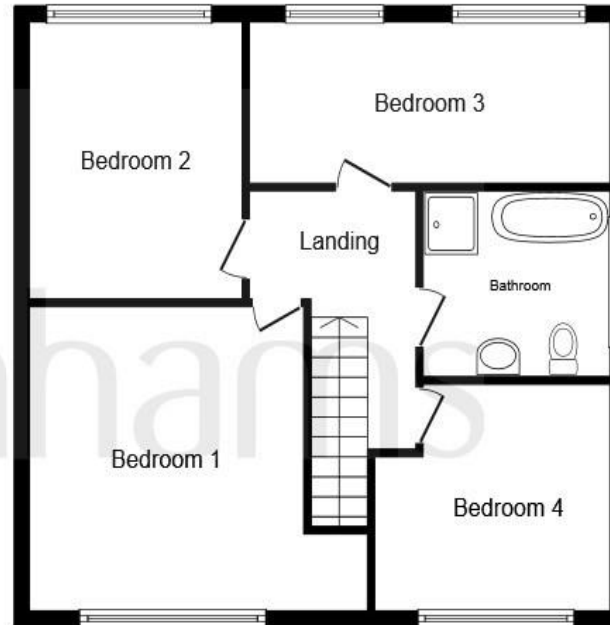
**Yew Tree Close, Thornton-Le-Moors**

A proper family sized home, providing immense scope. Huge room spec and a four bedroom layout. The location is great at the head of the cul-de-sac. Must be viewed do not miss this one.





**Ground Floor**



**First Floor**

**Entrance**

**Lounge**

17' 3" x 12' 9" ( 5.26m x 3.89m )

**Open Plan Family Room**

29' 4" to recess x 18' 3" to recess ( 8.94m to recess x 5.56m to recess )

**Utility Porch**

**On The First Floor**

**Bedroom One**

13' x 13' to extreme recess. ( 3.96m x 3.96m to extreme recess. )

**Bedroom Two**

11' 10" to recess x 10' 1" ( 3.61m to recess x 3.07m )

**Bedroom Three**

12' x 9' 10" ( 3.66m x 3.00m )

**Bedroom Four**

18' x 6' 9" Max ( 5.49m x 2.06m Max )

**Bathroom**

**Outside**

This floor plan is for illustrative purposes only. It is not drawn to scale. Any measurements, floor areas (including any total floor area), openings and orientation are approximate. No details are guaranteed, they cannot be relied upon for any purpose and they do not form part of any agreement. No liability is taken for any error, omission or misstatement. A party must rely upon its own inspection(s). Powered by [www.focalagent.com](http://www.focalagent.com)

## Welcome to

### Yew Tree Close, Thornton-Le-Moors

- Detached family home.
- Four Bedroom accommodation.
- Cul-de-sac location.
- Large open plan family room.
- Generous gardens.

Tenure: Freehold EPC Rating: Awaiting

offers over

# £325,000



**view this property online** [swetenhams.co.uk/Property/FRM108629](https://swetenhams.co.uk/Property/FRM108629)

Please note the marker reflects the postcode not the actual property



Property Ref:  
FRM108629 - 0004

1. MONEY LAUNDERING REGULATIONS Intending purchasers will be asked to produce identification documentation at a later stage and we would ask for your co-operation in order that there is no delay in agreeing the sale. 2. These particulars do not constitute part or all of an offer or contract. 3. The measurements indicated are supplied for guidance only and as such must be considered incorrect. Potential buyers are advised to recheck measurements before committing to any expense. 4. We have not tested any apparatus, equipment, fixtures or services and it is in the buyers interest to check the working condition of any appliances. 5. Where an EPC, or a Home Report (Scotland only) is held for this property, it is available for inspection at the branch by appointment. If you require a printed version of a Home Report, you will need to pay a reasonable production charge reflecting printing and other costs. 6. We are not able to offer an opinion either written or verbal on the content of these reports and this must be obtained from your legal representative. 7. Whilst we take care in preparing these reports, a buyer should ensure that his/her legal representative confirms as soon as possible all matters relating to title including the extent and boundaries of the property and other important matters before exchange of contracts.

  
swetenhams



**01928 732626**



[frodsham@swetenhams.co.uk](mailto:frodsham@swetenhams.co.uk)



Froda House, 113 Main Street, FRODSHAM,  
Cheshire, WA6 7AB



[swetenhams.co.uk](https://swetenhams.co.uk)