



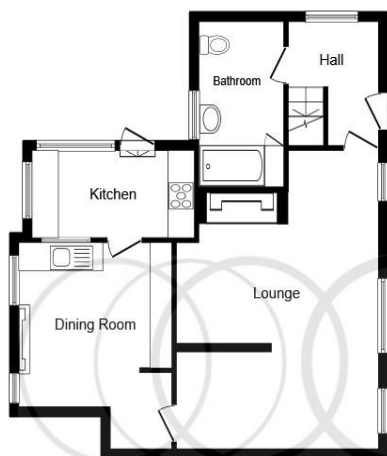
Cobweb Cottage, Chester Road, Nomans Heath, Malpas SY14 8DY

Welcome to

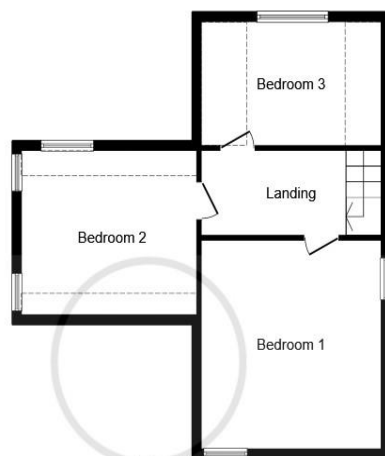
Cobweb Cottage, Chester Road, Nomans Heath, Malpas

The cutest cottage! Cobweb cottage is chocolate box perfect, a beautiful black-and-white timber cottage with a host of period features, charm by the boat load with surprisingly spacious and versatile accommodation.





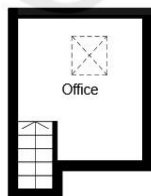
Ground Floor



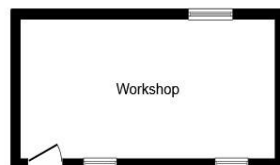
First Floor



Annex Ground Floor



Annex First Floor



Outbuilding

Entrance

Hallway

Kitchen

11' 5" x 12' 11" (3.48m x 3.94m)

The Dining Hall

15' 3" x 7' 5" (4.65m x 2.26m)

Living Room

15' 3" x 12' 3" (4.65m x 3.73m)

Plank Doorway To Bathroom

First Floor

Bedroom One

13' 6" x 12' 9" to recess (4.11m x 3.89m to recess)

Bedroom Two

13' 4" x 10' 9" (4.06m x 3.28m)

Bedroom Three

12' 8" x 8' 5" (3.86m x 2.57m)

Outbuildings

Garage/Workshop

18' 5" x 9' 2" (5.61m x 2.79m)

Door To The Studio Building

Driveway Parking And Gardens:

This floor plan is for illustrative purposes only. It is not drawn to scale. Any measurements, floor areas (including any total floor area), openings and orientation are approximate. No details are guaranteed, they cannot be relied upon for any purpose and they do not form part of any agreement. No liability is taken for any error, omission or misstatement. A party must rely upon its own inspection(s). Powered by www.focalagent.com

Welcome to

Cobweb Cottage, Chester Road, Nomans Heath, Malpas

- A beautiful black-and-white timber cottage
- Three bedroom accommodation
- Host of period features & charm
- Close to local amenities
- Surprisingly spacious and versatile

Tenure: Freehold EPC Rating: Exempt
Council Tax Band: E

£475,000



Please note the marker reflects the postcode not the actual property

view this property online [swetenhams.co.uk/Property/CHS118630](https://www.swetenhams.co.uk/Property/CHS118630)



Property Ref:
CHS118630 - 0003

1. MONEY LAUNDERING REGULATIONS Intending purchasers will be asked to produce identification documentation at a later stage and we would ask for your co-operation in order that there is no delay in agreeing the sale. 2. These particulars do not constitute part or all of an offer or contract. 3. The measurements indicated are supplied for guidance only and as such must be considered incorrect. Potential buyers are advised to recheck measurements before committing to any expense. 4. We have not tested any apparatus, equipment, fixtures or services and it is in the buyers interest to check the working condition of any appliances. 5. Where an EPC, or a Home Report (Scotland only) is held for this property, it is available for inspection at the branch by appointment. If you require a printed version of a Home Report, you will need to pay a reasonable production charge reflecting printing and other costs. 6. We are not able to offer an opinion either written or verbal on the content of these reports and this must be obtained from your legal representative. 7. Whilst we take care in preparing these reports, a buyer should ensure that his/her legal representative confirms as soon as possible all matters relating to title including the extent and boundaries of the property and other important matters before exchange of contracts.

Swetenhams is a trading name of Sequence (UK) Limited which is registered in England and Wales under company number 4268443, Registered Office is Cumbria House, 16-20 Hockliffe Street, Leighton Buzzard, Bedfordshire, LU7 1GN. VAT Registration Number is 500 2481 05.



swetenhams



01244 321321



chester@swetenhams.co.uk



28 Lower Bridge Street, CHESTER, Cheshire,
CH1 1RS



[swetenhams.co.uk](https://www.swetenhams.co.uk)