

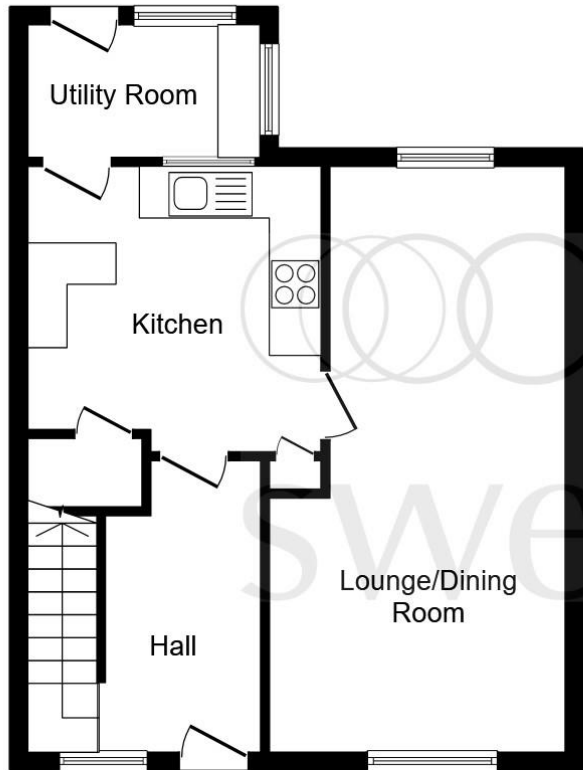


Cairns Crescent, Blacon, Chester CH1 5JF

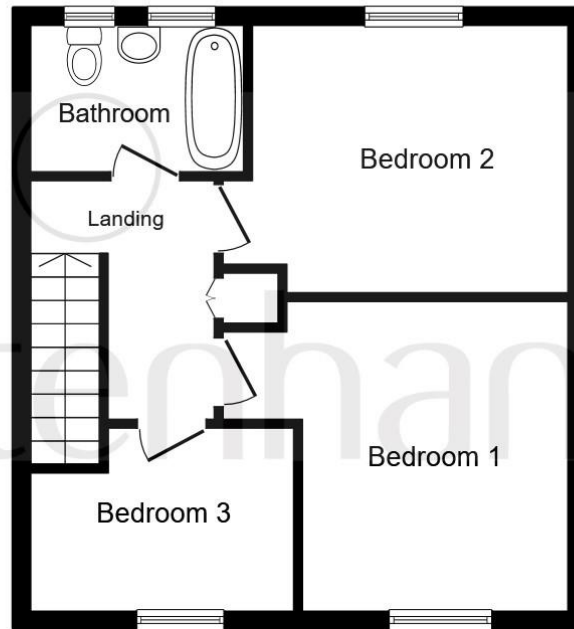
welcome to
Cairns Crescent, Blacon, Chester

This well presented 3 bedroom end-terraced family home benefits from a contemporary fitted kitchen and a utility room, and is situated in a popular residential area on the outskirts of the centre of Chester.

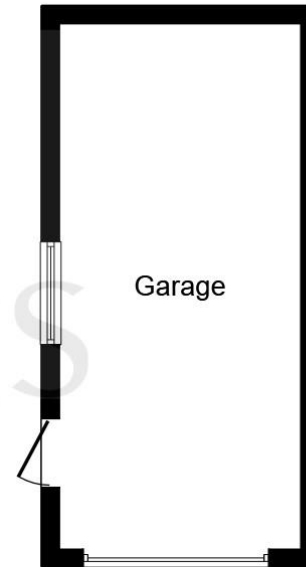




Ground Floor



First Floor



Garage

This floor plan is for illustrative purposes only. It is not drawn to scale. Any measurements, floor areas (including any total floor area), openings and orientation are approximate. No details are guaranteed, they cannot be relied upon for any purpose and they do not form part of any agreement. No liability is taken for any error, omission or misstatement. A party must rely upon its own inspection(s). Powered by www.focalagent.com

Entrance Hall

A part-glazed front entrance door leads into the tastefully decorated hallway, with staircase rising to the first floor landing, a large window to the front elevation, carpet flooring, radiator, and a door leading into the Kitchen.

Lounge/Dining Room

8' 6" min (11' 1" max) x 22' 2" (2.59m min (11' 1" max) x 6.76m)

With a window to the front elevation, a modern feature electric fire set in a black gloss surround, carpet flooring, and a radiator.

Kitchen

10' 9" x 9' 7" (3.28m x 2.92m)

A modern kitchen in a neutral finish, fitted with a range of wall, base and drawer units with complementary work surfaces, stainless steel sink and drainer with mixer tap, gas hob, overhead extractor fan, tiled flooring, a window looking into the utility room, access to understairs storage area, and doors leading into the lounge/dining room and the utility room.

Utility Room

5' 2" x 8' 9" (1.57m x 2.67m)

With windows to the side and rear elevations, and a door leading out to the rear garden.

First Floor Landing

Stairs leading up from the ground floor, loft access, carpet flooring, and doors leading to all bedrooms and the bathroom.

Bedroom One

10' 1" x 11' 7" (3.07m x 3.53m)

With a window to the front elevation, carpet flooring, and a radiator.

Bedroom Two

9' 7" x 11' 9" (2.92m x 3.58m)

With a window to the rear elevation, carpet flooring, and a radiator.

Bedroom Three

6' 4" min x 9' 11" max (1.93m min x 3.02m max)

With a window to the front elevation, carpet flooring, and a radiator.

Bathroom

Comprising a modern panelled bath with overhead shower, dual flush low level WC, pedestal wash basin, linoleum flooring, complementary tiled walls, and two frosted windows to the rear elevation.

Outside

Front

Mainly laid to lawn with a paved pathway, timber fencing with gated access, and a feature conifer surrounded by a decorative circle of stones.

Rear

A wide timber gate opens onto a long concrete driveway which offers parking for two cars, leading down to a paved patio area, garage, and lean-to with timber decking.

Garage

9' 2" x 22' 7" (2.79m x 6.88m)

With an up-and-over door, and a window and door to the side elevation.



view this property online swetenhams.co.uk/Property/CHS118348



welcome to

Cairns Crescent, Blacon Chester

- A 3-Bedroom End-Terrace Property
- Popular Residential Area
- Modern Fitted Kitchen and Utility Room
- Gardens to Front and Rear
- Garage and Driveway Parking
- Accessed from both Front and Rear

Tenure: Freehold
EPC Rating: C
Council Tax Band: A

£180,000



Please note the marker reflects the
postcode not the actual property

view this property online [swetenhams.co.uk/Property/CHS118348](https://www.swetenhams.co.uk/Property/CHS118348)



Property Ref:
CHS118348 - 0003

1. MONEY LAUNDERING REGULATIONS Intending purchasers will be asked to produce identification documentation at a later stage and we would ask for your co-operation in order that there is no delay in agreeing the sale. 2. These particulars do not constitute part or all of an offer or contract. 3. The measurements indicated are supplied for guidance only and as such must be considered incorrect. Potential buyers are advised to recheck measurements before committing to any expense. 4. We have not tested any apparatus, equipment, fixtures or services and it is in the buyers interest to check the working condition of any appliances. 5. Where an EPC, or a Home Report (Scotland only) is held for this property, it is available for inspection at the branch by appointment. If you require a printed version of a Home Report, you will need to pay a reasonable production charge reflecting printing and other costs. 6. We are not able to offer an opinion either written or verbal on the content of these reports and this must be obtained from your legal representative. 7. Whilst we take care in preparing these reports, a buyer should ensure that his/her legal representative confirms as soon as possible all matters relating to title including the extent and boundaries of the property and other important matters before exchange of contracts.

Swetenhams is a trading name of Sequence (UK) Limited which is registered in England and Wales under company number 4268443, Registered Office is Cumbria House, 16-20 Hockliffe Street, Leighton Buzzard, Bedfordshire, LU7 1GN. VAT Registration Number is 500 2481 05.


swetenhams



01244 321321



chester@swetenhams.co.uk



28 Lower Bridge Street, CHESTER, Cheshire,
CH1 1RS



[swetenhams.co.uk](https://www.swetenhams.co.uk)