



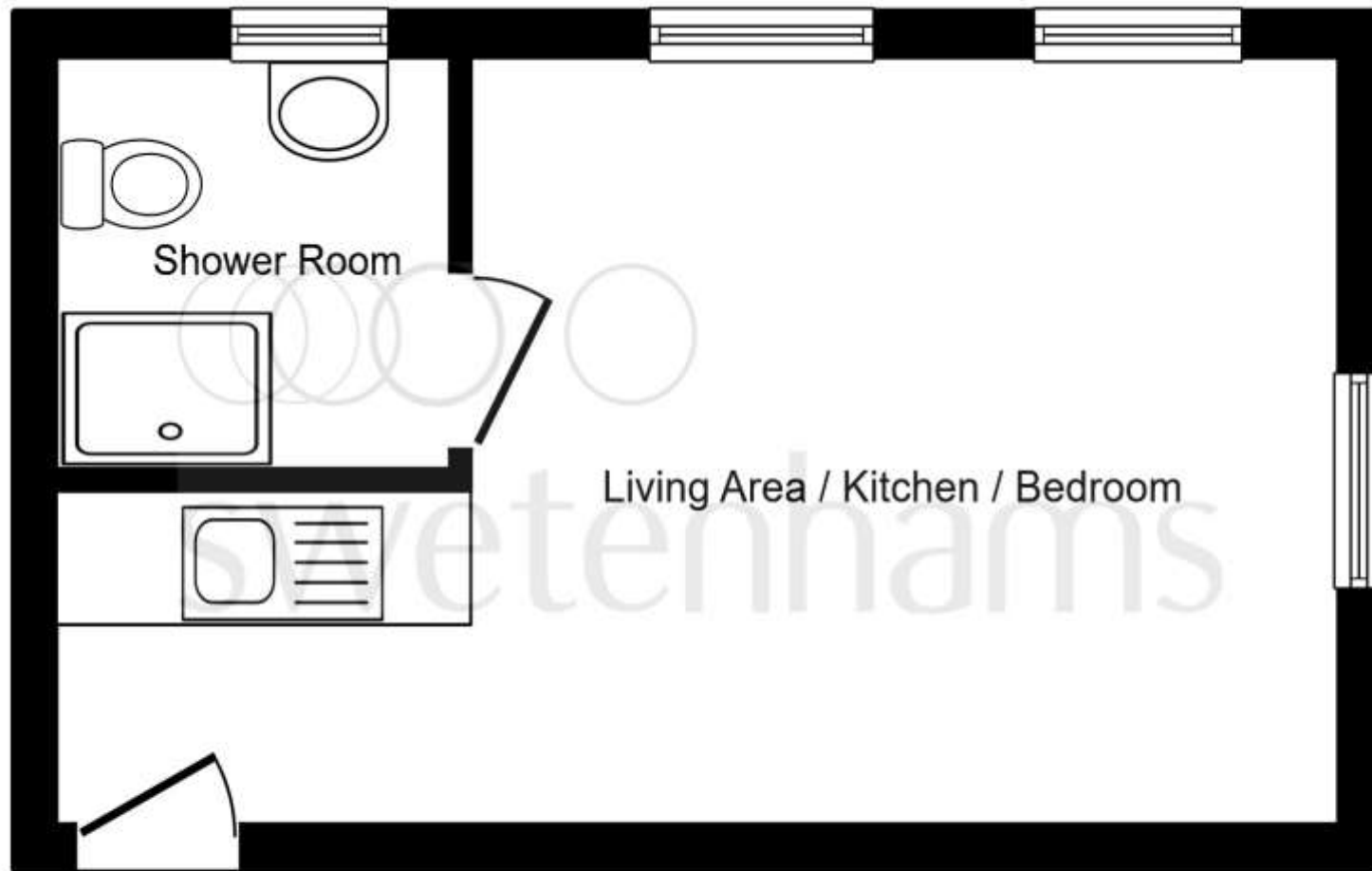
Domus House, Lower Bridge Street, Chester CH1 1RU

welcome to

Domus House, Lower Bridge Street, Chester

A well maintained and presented LUXURY STUDIO APARTMENT - small, but perfect! An ideal investment for short-term lets. RIVER VIEWS and very close to Chester city centre. Massive bonus of PRIVATE GATED PARKING.





Studio Apartment

11' 4" x 13' 8" max (3.45m x 4.17m max)

You are immediately greeted by a kitchenette with everything you could need - an integrated fridge freezer, oven/microwave, and sink with worktop, plus plenty of cleverly placed cupboards/drawers to maximise storage space.

Once through the kitchenette, you will find a luxury studio filled with natural light from three large period windows which look onto the historic City Walls and onto the River Dee. All furnishings are included with the apartment. There is a bespoke fold-down Italian bed/sofa which seamlessly blends into the room, attaching to a wardrobe in the corner. There is also a table and chairs, and a TV mounted in the corner.

From the studio is a shower room with wash basin, WC, shower, and heated towel rail, and a large window with privacy glass.

This floor plan is for illustrative purposes only. It is not drawn to scale. Any measurements, floor areas (including any total floor area), openings and orientation are approximate. No details are guaranteed, they cannot be relied upon for any purpose and they do not form part of any agreement. No liability is taken for any error, omission or misstatement. A party must rely upon its own inspection(s). Powered by www.focalagent.com

welcome to

Domus House, Lower Bridge Street, Chester

- A Luxury Studio Apartment
- River Views
- Almost on the Historic Walls
- Investment Opportunity
- Parking Space

Tenure: Leasehold

EPC Rating: D

Council Tax Band: A

This is a Leasehold property with details as follows; Term of Lease 250 years from 01 Dec 2014. Should you require further information please contact the branch. Please Note additional fees could be incurred for items such as Leasehold packs.

£160,000



Please note the marker reflects the postcode not the actual property

[view this property online](https://www.swetenhams.co.uk/Property/CHS118050) [swetenhams.co.uk/Property/CHS118050](https://www.swetenhams.co.uk/Property/CHS118050)



Property Ref:
CHS118050 - 0005

1. MONEY LAUNDERING REGULATIONS Intending purchasers will be asked to produce identification documentation at a later stage and we would ask for your co-operation in order that there is no delay in agreeing the sale. 2. These particulars do not constitute part or all of an offer or contract. 3. The measurements indicated are supplied for guidance only and as such must be considered incorrect. Potential buyers are advised to recheck measurements before committing to any expense. 4. We have not tested any apparatus, equipment, fixtures or services and it is in the buyers interest to check the working condition of any appliances. 5. Where an EPC, or a Home Report (Scotland only) is held for this property, it is available for inspection at the branch by appointment. If you require a printed version of a Home Report, you will need to pay a reasonable production charge reflecting printing and other costs. 6. We are not able to offer an opinion either written or verbal on the content of these reports and this must be obtained from your legal representative. 7. Whilst we take care in preparing these reports, a buyer should ensure that his/her legal representative confirms as soon as possible all matters relating to title including the extent and boundaries of the property and other important matters before exchange of contracts.

Swetenhams is a trading name of Sequence (UK) Limited which is registered in England and Wales under company number 4268443, Registered Office is Cumbria House, 16-20 Hockliffe Street, Leighton Buzzard, Bedfordshire, LU7 1GN. VAT Registration Number is 500 2481 05.


swetenhams



01244 321321



chester@swetenhams.co.uk



28 Lower Bridge Street, CHESTER, Cheshire,
CH1 1RS



[swetenhams.co.uk](https://www.swetenhams.co.uk)