



Backford Hall, Backford Park

A delightful two bedroom ground floor apartment in the beautiful Grade II listed, mid-19th century, Backford Hall.



Large Hallway

A fully carpeted bright entrance hall with a radiator and a window positioned above the front door.

Inner Hallway

A carpeted inner hallway with doors leading to both bedrooms.

Lounge / Kitchen

15' 10" x 39' 2"

A carpeted lounge area with a feature fireplace and a large sash window to the side elevation, and divided from the kitchen area by a breakfast bar. The kitchen area has wood-effect laminate flooring with fitted wall and base units, large sash windows to the side elevation, and integrated appliances to include; electric oven, induction hob and dishwasher.

Bedroom One

14' 5" x 17' 8"

A fully carpeted master bedroom with fitted wardrobes, large sash windows, an open fireplace space, and a door leading to the en-suite.



En-Suite

Comprising a large double shower with a glass screen, wash hand basin set in a vanity unit, and a WC.

Bedroom Two

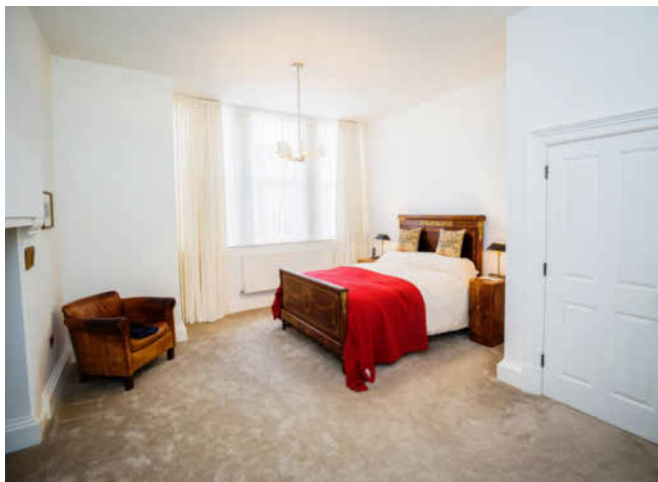
14' 8" x 8' 10"

A fully carpeted second bedroom with a radiator and a large sash window to the rear elevation.

Bathroom

Comprising a bath with shower over, WC, vanity unit with sink, radiator, wood-effect laminate flooring, and a window to the rear elevation.







This floor plan is for illustrative purposes only. It is not drawn to scale. Any measurements, floor areas (including any total floor area), openings and orientation are approximate. No details are guaranteed, they cannot be relied upon for any purpose and they do not form part of any agreement. No liability is taken for any error, omission or misstatement. A party must rely upon its own inspection(s). Powered by www.focalagent.com

welcome to

7 Backford Hall, Blencowe Close, Backford Park CH1 6QR

A splendid opportunity to acquire a two bedroom ground floor apartment. The property forms part of the stunning conversion of Backford Hall, a wonderful Grade II listed mid-19th century residence, standing proud within the desired and highly sought-after Backford Park development. Viewing Advised.

Offers Over

£400,000

- Two Bedroom Ground Floor Apartment
- Grade II Listed Building with Character in Abundance
- High Specification
- Periphery of Chester City Centre

Tenure: Leasehold

EPC Rating: D



To find out more information or to arrange a viewing call

01244 321321

or email Chester@swetenhams.co.uk

28 Lower Bridge Street, Chester, Cheshire CH1 1RS
swetenhams.co.uk

1. MONEY LAUNDERING REGULATIONS Intending purchasers will be asked to produce identification documentation at a later stage and we would ask for your co-operation in order that there is no delay in agreeing the sale. 2. These particulars do not constitute part or all of an offer or contract. 3. The measurements indicated are supplied for guidance only and as such must be considered incorrect. Potential buyers are advised to recheck measurements before committing to any expense. 4. We have not tested any apparatus, equipment, fixtures or services and it is in the buyers interest to check the working condition of any appliances. 5. Where an EPC, or a Home Report (Scotland only) is held for this property, it is available for inspection at the branch by appointment. If you require a printed version of a Home Report, you will need to pay a reasonable production charge reflecting printing and other costs. 6. We are not able to offer an opinion either written or verbal on the content of these reports and this must be obtained from your legal representative. 7. Whilst we take care in preparing these reports, a buyer should ensure that his/her legal representative confirms as soon as possible all matters relating to title including the extent and boundaries of the property and other important matters before exchange of contracts.

Trading name of Sequence (UK) Limited which is registered in England and Wales under company number 4268443, Registered Office is Cumbria House, 16-20 Hockliffe Street, Leighton Buzzard, Bedfordshire, LU7 1GN. VAT Registration Number is 500 2481 05.

