



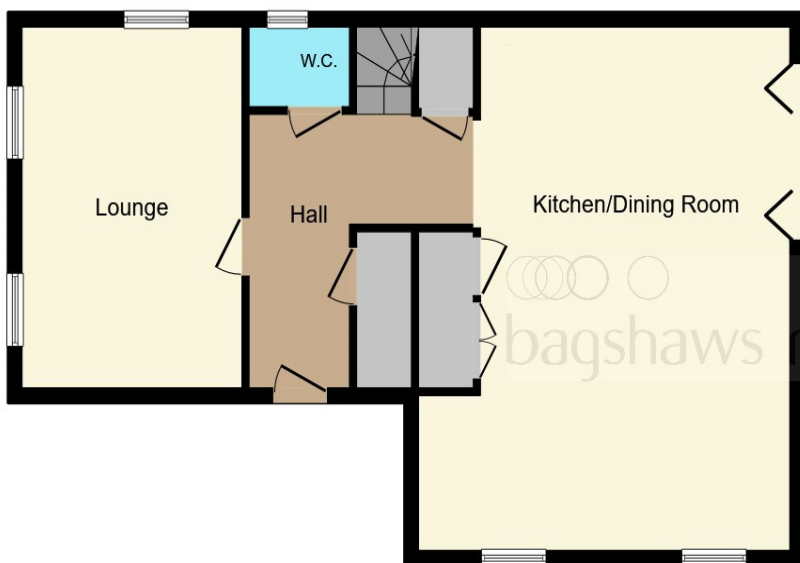
Damstead Park Avenue, Alferton DE55 7PR

welcome to

Damstead Park Avenue, Alfreton

This contemporary detached family house Offers modern accommodation, being built in 2018. Comprising of four generous bedrooms, stunning open-plan kitchen/ dining space, two bathrooms and a cloakroom. Outside is an enclosed garden, spacious driveway and garage.





Ground Floor



First Floor

Entrance Hall

Cloakroom

Living Room

14' 6" MAX x 10' 8" MAX (4.42m MAX x 3.25m MAX)

Open Plan Kitchen Diner

22' 2" MAX x 16' 8" MAX (6.76m MAX x 5.08m MAX)

Landing

Bedroom One

12' 6" MAX x 9' 6" MAX (3.81m MAX x 2.90m MAX)

En Suite

Bedroom Two

10' 9" MAX x 9' 1" MAX (3.28m MAX x 2.77m MAX)

Bedroom Three

9' 2" MAX x 9' 1" MAX (2.79m MAX x 2.77m MAX)

Bedroom Four

9' 2" MAX x 7' 3" MAX (2.79m MAX x 2.21m MAX)

Bathroom

9' 2" MAX x 7' 3" MAX (2.79m MAX x 2.21m MAX)

Exterior

9' 2" MAX x 7' 3" MAX (2.79m MAX x 2.21m MAX)

This floor plan is for illustrative purposes only. It is not drawn to scale. Any measurements, floor areas (including any total floor area), openings and orientation are approximate. No details are guaranteed, they cannot be relied upon for any purpose and they do not form part of any agreement. No liability is taken for any error, omission or misstatement. A party must rely upon its own inspection(s). Powered by www.focalagent.com

welcome to

Damstead Park Avenue, Alfreton

- Modern Detached Family Home
- Four Bedrooms
- Cloakroom, En Suite & Family Bathroom
- Stunning Open-Plan Kitchen with Island and Bi-Folds
- Driveway Parking (Three-Vehicle Length) and Garage

Tenure: Freehold EPC Rating: B

offers in the region of

£365,000

This contemporary detached family house is situated in a recently developed site built by Avant Homes. The property was built in 2018 and enjoys the benefits of the remaining warranty and modern finish throughout.

The site is sought after and comprises of immaculate executive style homes, with a beautiful setting and desirable location adjacent to Wingfield Road. Alfreton also has great transport links with close proximity to the A38 and M1 and a railway station, making it a viable commuter spot for access into Derby, Nottingham, Sheffield and beyond.

This generous home offers accommodation comprising of an Entrance Hall, Cloakroom, triple aspect Living Room, open plan Kitchen Diner/ Family Room with large island unit, integrated appliances and bi-fold doors into the garden. To the first floor, the landing connects the four Bedrooms, all accommodating double beds, with an En Suite shower room to largest bedroom and finally, is a Family Bathroom with shower over the bath.

Externally, there is a small low maintenance frontage with long driveway (three-vehicle), leading to the single garage. The rear garden is fully enclosed with lawn and patio seating area.



Please note the marker reflects the postcode not the actual property

view this property online bagshawsresidential.co.uk/Property/DBY120616



Property Ref:
DBY120616 - 0003

1. MONEY LAUNDERING REGULATIONS Intending purchasers will be asked to produce identification documentation at a later stage and we would ask for your co-operation in order that there is no delay in agreeing the sale. 2. These particulars do not constitute part or all of an offer or contract. 3. The measurements indicated are supplied for guidance only and as such must be considered incorrect. Potential buyers are advised to recheck measurements before committing to any expense. 4. We have not tested any apparatus, equipment, fixtures or services and it is in the buyers interest to check the working condition of any appliances. 5. Where an EPC, or a Home Report (Scotland only) is held for this property, it is available for inspection at the branch by appointment. If you require a printed version of a Home Report, you will need to pay a reasonable production charge reflecting printing and other costs. 6. We are not able to offer an opinion either written or verbal on the content of these reports and this must be obtained from your legal representative. 7. Whilst we take care in preparing these reports, a buyer should ensure that his/her legal representative confirms as soon as possible all matters relating to title including the extent and boundaries of the property and other important matters before exchange of contracts.

Bagshaws Residential is a trading name of Sequence (UK) Limited which is registered in England and Wales under company number 4268443, Registered Office is Cumbria House, 16-20 Hockliffe Street, Leighton Buzzard, Bedfordshire, LU7 1GN. VAT Registration Number is 500 2481 05.



bagshaws residential



01332 361308



Derby@bagshawsresidential.co.uk



32-34 Cornmarket, DERBY, Derbyshire, DE1 2DG



bagshawsresidential.co.uk