



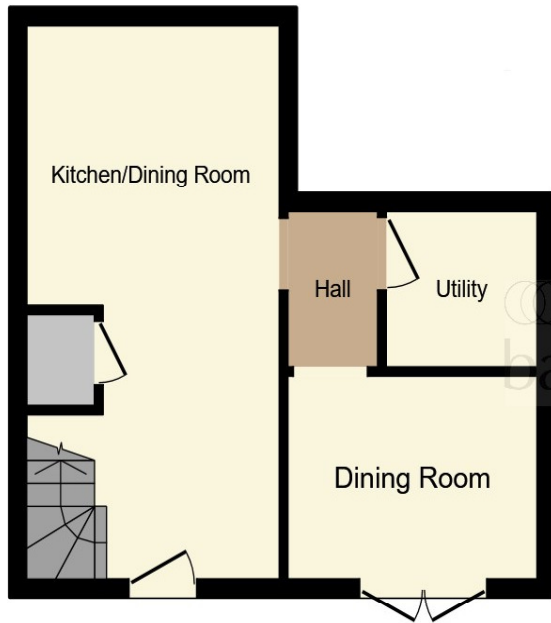
Bridle Lane, Lower Hartshay RIPLEY DE5 3RQ

welcome to

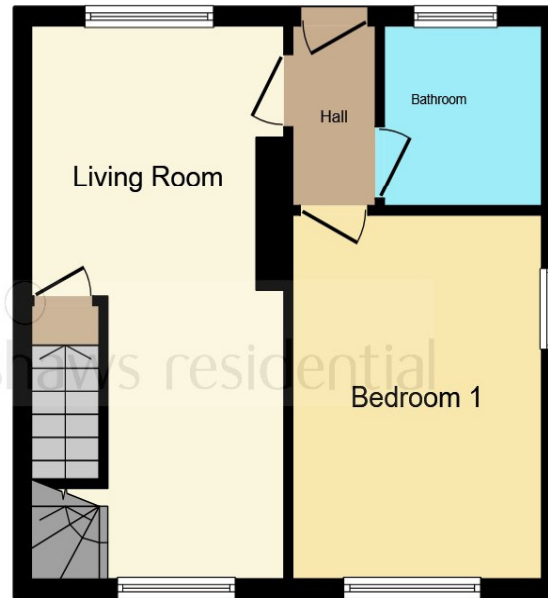
Bridle Lane, Lower Hartshay RIPLEY

GUIDE PRICE £450,000 - £475,000 A charming three-bedroom cottage set in the peaceful hamlet of Lower Hartshay, Ripley, offering $\frac{3}{4}$ acre of land ideal for equestrian use or animal lovers, with characterful interiors, stunning countryside views, and a tranquil brook running along the property.

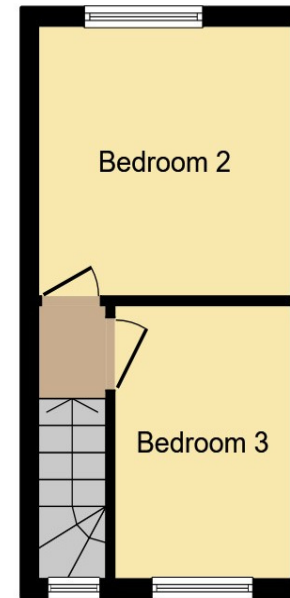




Lower Ground Floor



Ground Floor



First Floor

About The Area

Kitchen/ Dining Room

19' 6" MAX x 9' 7" MAX (5.94m MAX x 2.92m MAX)

Dining Room

9' 6" MAX x 7' 3" MAX (2.90m MAX x 2.21m MAX)

Utility Room

5' 8" MAX x 5' 6" MAX (1.73m MAX x 1.68m MAX)

Living Room

20' 4" MAX x 9' 9" MAX (6.20m MAX x 2.97m MAX)

Bedroom 1

13' 5" MAX x 9' 7" MAX (4.09m MAX x 2.92m MAX)

Bathroom

6' 5" MAX x 6' 1" MAX (1.96m MAX x 1.85m MAX)

Bedroom 2

10' 2" MAX x 9' 6" MAX (3.10m MAX x 2.90m MAX)

Bedroom 3

10' 9" MAX x 7' 3" MAX (3.28m MAX x 2.21m MAX)

This floor plan is for illustrative purposes only. It is not drawn to scale. Any measurements, floor areas (including any total floor area), openings and orientation are approximate. No details are guaranteed, they cannot be relied upon for any purpose and they do not form part of any agreement. No liability is taken for any error, omission or misstatement. A party must rely upon its own inspection(s). Powered by www.focalagent.com

welcome to

Bridle Lane, Lower Hartshay RIPLEY

- Three-bedroom character cottage in Lower Hartshay - NO CHAIN
- Approximately $\frac{3}{4}$ acre of land, ideal for equestrian or animal use
- Charming kitchen/dining room with cottage-style finish
- Separate utility room for added convenience.
- Cosy dining room with double doors and field views

Tenure: Freehold EPC Rating: D

guide price

£450,000



Please note the marker reflects the postcode not the actual property

view this property online [bagshawsresidential.co.uk/Property/DBY120535](https://www.bagshawsresidential.co.uk/Property/DBY120535)



Property Ref:
DBY120535 - 0003

1. MONEY LAUNDERING REGULATIONS Intending purchasers will be asked to produce identification documentation at a later stage and we would ask for your co-operation in order that there is no delay in agreeing the sale. 2. These particulars do not constitute part or all of an offer or contract. 3. The measurements indicated are supplied for guidance only and as such must be considered incorrect. Potential buyers are advised to recheck measurements before committing to any expense. 4. We have not tested any apparatus, equipment, fixtures or services and it is in the buyers interest to check the working condition of any appliances. 5. Where an EPC, or a Home Report (Scotland only) is held for this property, it is available for inspection at the branch by appointment. If you require a printed version of a Home Report, you will need to pay a reasonable production charge reflecting printing and other costs. 6. We are not able to offer an opinion either written or verbal on the content of these reports and this must be obtained from your legal representative. 7. Whilst we take care in preparing these reports, a buyer should ensure that his/her legal representative confirms as soon as possible all matters relating to title including the extent and boundaries of the property and other important matters before exchange of contracts.

Bagshaws Residential is a trading name of Sequence (UK) Limited which is registered in England and Wales under company number 4268443, Registered Office is Cumbria House, 16-20 Hockliffe Street, Leighton Buzzard, Bedfordshire, LU7 1GN. VAT Registration Number is 500 2481 05.



bagshaws residential



01332 361308



Derby@bagshawsresidential.co.uk



32-34 Cornmarket, DERBY, Derbyshire, DE1 2DG



[bagshawsresidential.co.uk](https://www.bagshawsresidential.co.uk)