



Walnut Cottage Church Road, North Leigh Witney OX29 6TX

welcome to

Walnut Cottage Church Road, North Leigh Witney

Situated within the highly desirable village of North Leigh sits Walnut Cottage which is a three-bedroom semi-detached cottage that boasts spacious accommodation and natural light throughout.

Briefly comprising entrance porch, study with beautiful countryside views, living room which boasts space and natural light, kitchen/diner with a stable door leading through into the garden, completing the ground floor is a spacious bathroom which comes with a free-standing roll top bath.

To the first floor Walnut Cottage offers three bedrooms, the master bedroom comes with a newly fitted en-suite shower room and built in storage, two further spacious bedroom and a cloakroom.

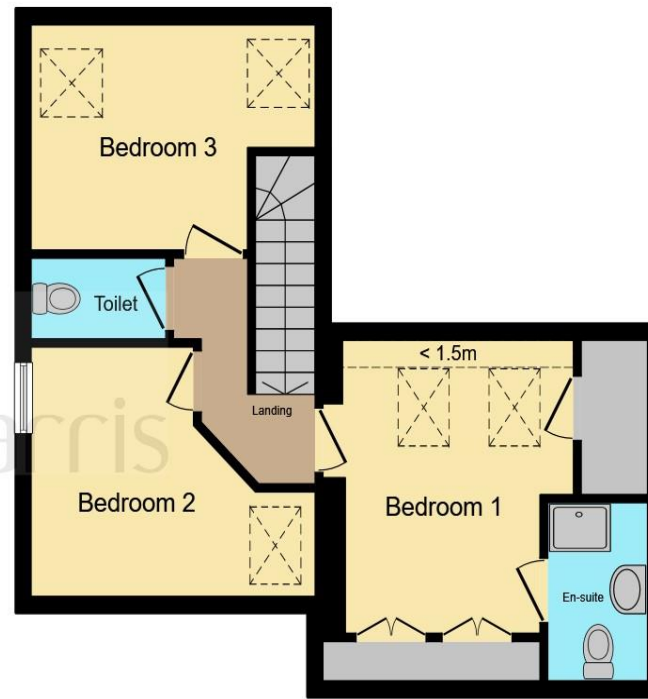
Outside Walnut Cottages offers an enclosed rear garden with gated access to your secured off streetcar port and shed area.

Viewing Walnut Cottage is essential.





Ground Floor



First Floor

- Entrance Porch**
6' 7" x 3' 2" (2.01m x 0.97m)
- Cloakroom**
- Kitchen/Diner**
14' 2" x 13' 10" (4.32m x 4.22m)
- Study**
12' 4" x 4' 9" (3.76m x 1.45m)
- Living Room**
17' 10" x 12' 4" (5.44m x 3.76m)
- Bedroom One**
12' 9" x 9' 7" (3.89m x 2.92m)
- En Suite**
8' 8" x 3' 1" (2.64m x 0.94m)
- Bedroom Two**
12' 4" x 9' 2" (3.76m x 2.79m)
- Bedroom Three**
12' 4" x 10' 4" (3.76m x 3.15m)
- Bathroom**
- Garden**
- Shed**
- Parking**

This floor plan is for illustrative purposes only. It is not drawn to scale. Any measurements, floor areas (including any total floor area), openings and orientation are approximate. No details are guaranteed, they cannot be relied upon for any purpose and they do not form part of any agreement. No liability is taken for any error, omission or misstatement. A party must rely upon its own inspection(s). Powered by www.focalagent.com

welcome to

Walnut Cottage Church Road, North Leigh Witney

- NO ONWARD CHAIN
- Semi-Detached Cottage
- Beautiful Village location
- Three Bedrooms
- Reception Room & Study

Tenure: Freehold EPC Rating: D

guide price

£475,000



Please note the marker reflects the
postcode not the actual property

view this property online [allenandharris.co.uk/Property/WIT105831](https://www.allenandharris.co.uk/Property/WIT105831)



Property Ref:
WIT105831 - 0009

1. MONEY LAUNDERING REGULATIONS Intending purchasers will be asked to produce identification documentation at a later stage and we would ask for your co-operation in order that there is no delay in agreeing the sale. 2. These particulars do not constitute part or all of an offer or contract. 3. The measurements indicated are supplied for guidance only and as such must be considered incorrect. Potential buyers are advised to recheck measurements before committing to any expense. 4. We have not tested any apparatus, equipment, fixtures or services and it is in the buyers interest to check the working condition of any appliances. 5. Where an EPC, or a Home Report (Scotland only) is held for this property, it is available for inspection at the branch by appointment. If you require a printed version of a Home Report, you will need to pay a reasonable production charge reflecting printing and other costs. 6. We are not able to offer an opinion either written or verbal on the content of these reports and this must be obtained from your legal representative. 7. Whilst we take care in preparing these reports, a buyer should ensure that his/her legal representative confirms as soon as possible all matters relating to title including the extent and boundaries of the property and other important matters before exchange of contracts.

Allen & Harris is a trading name of Sequence (UK) Limited which is registered in England and Wales under company number 4268443, Registered Office is Cumbria House, 16-20 Hockliffe Street, Leighton Buzzard, Bedfordshire, LU7 1GN. VAT Registration Number is 500 2481 05.


allen & harris



01993 705915



witney@allenandharris.co.uk



54 Market Square, WITNEY, Oxfordshire, OX28
6AF



[allenandharris.co.uk](https://www.allenandharris.co.uk)