



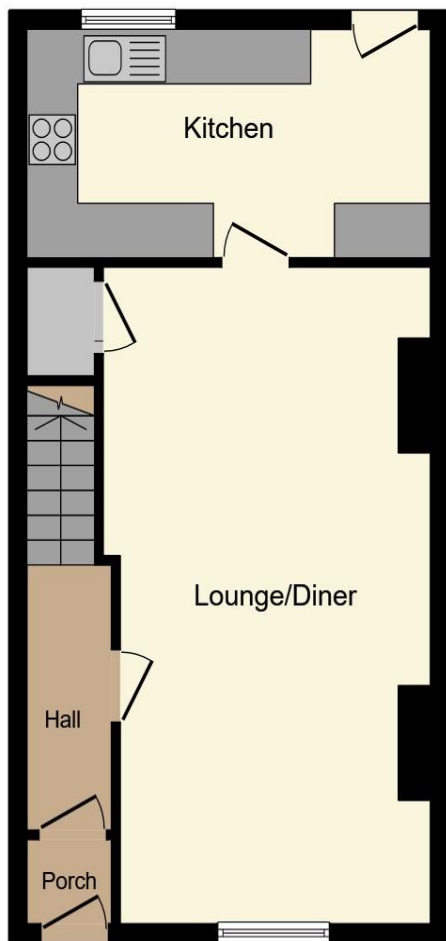
50 Northload Street, Glastonbury, BA6 9JP

welcome to

Northload Street, Glastonbury

Three storey Victorian building located in one of the older parts of Glastonbury just a few minutes' walk from Glastonbury Market Place ** Offering substantial accommodation over three storeys ** 4 Bedrooms ** Benefiting from garden and **NO ONWARD CHAIN**.

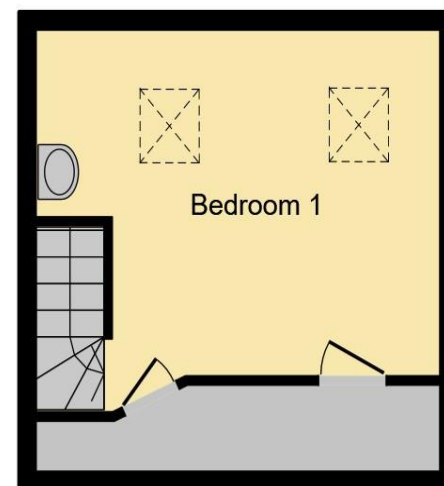




Ground Floor



First Floor



Second Floor

Ground Floor

Entrance Hall

Lounge

12' 5" max x 23' 4" max (3.78m max x 7.11m max)

Kitchen

8' 2" max x 14' 11" max (2.49m max x 4.55m max)

First Floor Landing

Bedroom Two

8' 9" max x 12' 10" (2.67m max x 3.91m)

Bedroom Three

9' 7" max x 10' 1" max (2.92m max x 3.07m max)

Bedroom Four

5' 11" max x 9' 7" max (1.80m max x 2.92m max)

Bathroom

Second Floor

Bedroom One

15' max x 16' 6" max (4.57m max x 5.03m max)

Outside

Garden

This floor plan is for illustrative purposes only. It is not drawn to scale. Any measurements, floor areas (including any total floor area), openings and orientation are approximate. No details are guaranteed, they cannot be relied upon for any purpose and they do not form part of any agreement. No liability is taken for any error, omission or misstatement. A party must rely upon its own inspection(s). Powered by www.focalagent.com

welcome to

Northload Street, Glastonbury

- Central Position to Town** In Need of Refurbishment
- 4 Bedroom Victorian Mid-Terrace House
- Spacious Accommodation Set Over Three Floors
- Kitchen/Breakfast Room ** Lounge with Open Fireplace
- Enclosed Rear Garden
- NO CHAIN

Tenure: Freehold EPC Rating: F
Council Tax Band: B

£310,000



Please note the marker reflects the postcode not the actual property

view this property online allenandharris.co.uk/Property/WEL106082



Property Ref:
WEL106082 - 0003

1. MONEY LAUNDERING REGULATIONS Intending purchasers will be asked to produce identification documentation at a later stage and we would ask for your co-operation in order that there is no delay in agreeing the sale. 2. These particulars do not constitute part or all of an offer or contract. 3. The measurements indicated are supplied for guidance only and as such must be considered incorrect. Potential buyers are advised to recheck measurements before committing to any expense. 4. We have not tested any apparatus, equipment, fixtures or services and it is in the buyers interest to check the working condition of any appliances. 5. Where an EPC, or a Home Report (Scotland only) is held for this property, it is available for inspection at the branch by appointment. If you require a printed version of a Home Report, you will need to pay a reasonable production charge reflecting printing and other costs. 6. We are not able to offer an opinion either written or verbal on the content of these reports and this must be obtained from your legal representative. 7. Whilst we take care in preparing these reports, a buyer should ensure that his/her legal representative confirms as soon as possible all matters relating to title including the extent and boundaries of the property and other important matters before exchange of contracts.

Allen & Harris is a trading name of Sequence (UK) Limited which is registered in England and Wales under company number 4268443, Registered Office is Cumbria House, 16-20 Hockliffe Street, Leighton Buzzard, Bedfordshire, LU7 1GN. VAT Registration Number is 500 2481 05.


allen & harris



01749 676067



Wells@allenandharris.co.uk



15 Sadler Street, WELLS, Somerset, BA5 2RR



allenandharris.co.uk